

**VISIT  
SAIMAA**  
LAKELAND  
FINLAND

LAKE  
SAIMAA  
PUREST  
FINLAND



LAKE SAIMAA, PUREST FINLAND

# PRODUCT MANUAL

MIKKELI • SAVONLINNA • VARKAUS

[visitsaimaa.fi](https://visitsaimaa.fi)



# Unique Lake Saimaa



**VISIT  
SAIMAA**  
LAKELAND  
FINLAND

The exceptionally beautiful Lake Saimaa area is Finland's oldest tourist destination and its beautiful nature has drawn in visitors since the 19<sup>th</sup> century.

Lake Saimaa, the fourth largest freshwater lake in Europe, offers sparkling pure waters dotted with 14,000 islands – a winding labyrinth filled with breathtaking scenery and the purest nature.

## LAKE SAIMAA

Surface area ..... 4 400 km<sup>2</sup>  
Shoreline ..... 14 850 km  
Islands ..... 13 710  
Water level ..... 75,70 m  
Greatest depth ..... 84 m  
Depth on average .... 17 m



# How to get there?



## By plane

Mikkeli Airport  
Savonlinna Airport  
Kuopio Airport  
Lappeenranta Airport  
[www.airlink.fi](http://www.airlink.fi)  
[www.ryanair.com](http://www.ryanair.com)  
[www.finnair.com](http://www.finnair.com)



## By rental car

Rental cars:  
[www.hertz.fi](http://www.hertz.fi)  
[www.avis.fi](http://www.avis.fi)  
[www.europcar.fi](http://www.europcar.fi)



## By bus

Bus tickets:  
[www.perille.fi](http://www.perille.fi)



## By train

Helsinki-Mikkeli 2,2 hours  
Helsinki-Savonlinna 4 hours  
Helsinki-Varkaus 4 hours  
Train tickets:  
[www.vr.fi](http://www.vr.fi)

Distances by car hr	HELSINKI	IMATRA	LAPPEENRANTA	MIKKELI	SAVONLINNA	VARKAUS	ST PETERSBURG
HELSINKI		3:00	2:45	2:30	4:00	3:45	5:00
IMATRA	3:00		0:30	2:00	1:30	2:15	3:00
LAPPEENRANTA	2:45	0:30		1:30	2:00	2:30	3:00
MIKKELI	2:30	2:00	1:30		1:30	1:00	3:30
SAVONLINNA	4:00	1:30	2:00	1:30		1:30	4:30
VARKAUS	3:45	2:15	2:30	1:00	1:30		5:00
ST PETERSBURG	5:00	3:00	3:00	3:30	4:30	5:00	

Finland



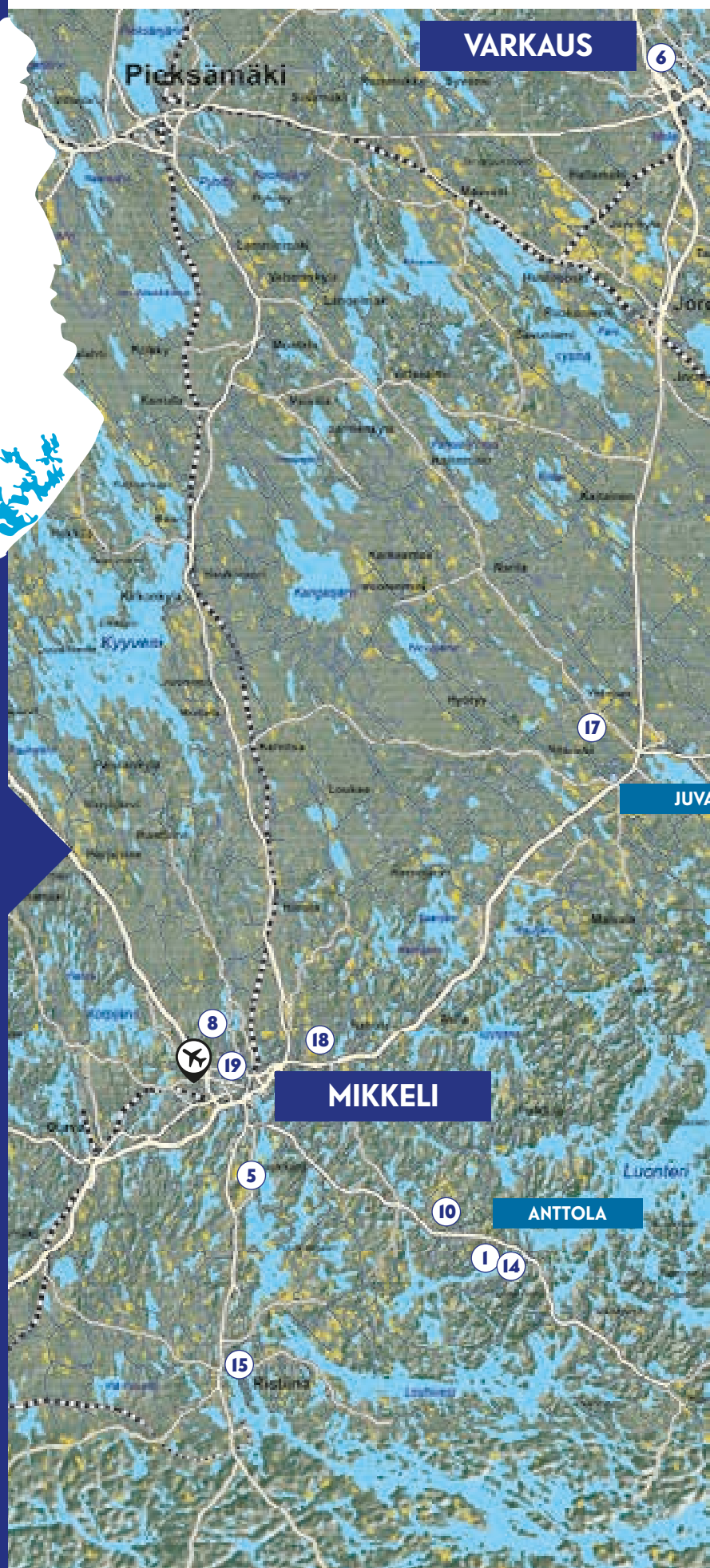


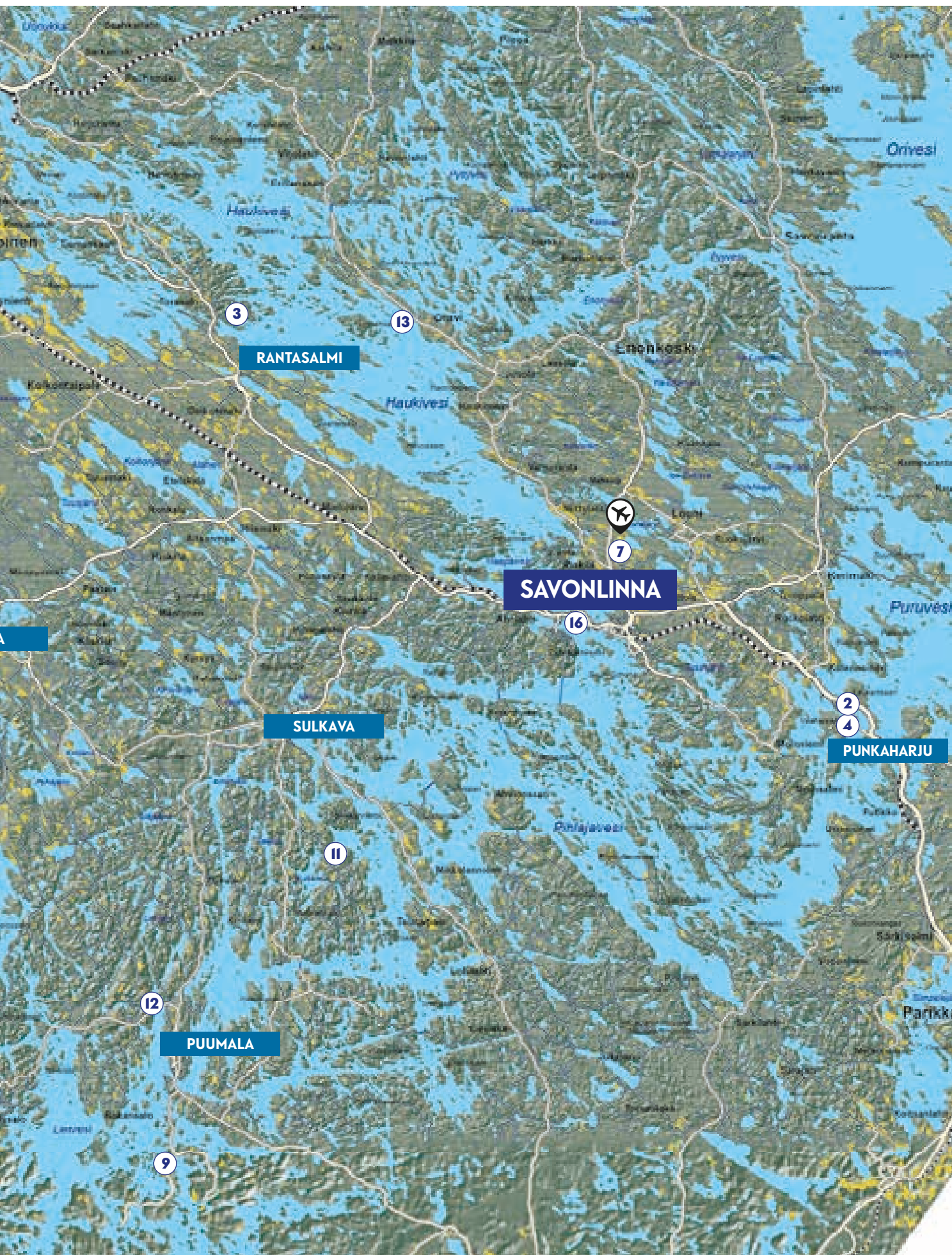
# Come on a unique journey to the Finnish Lakeland and Lake Saimaa

**VISIT  
SAIMAA**  
LAKELAND  
FINLAND

The companies numbered on the map can be found under the corresponding number in the brochure.

1. Anttolanhovi Resort
2. Hotel Punkaharju
3. Hotel & Spa Resort Järvisydän
4. Kruunupuisto Health Resort & Villa Urhola
5. Kyyhkylä Manor & Hotel
6. LakelandGTE
7. Lomamokkila B&B and Cottages
8. The Trotting Track of Mikkeli
9. Okkola Holiday Cottages
10. Ollinmäki Winery
11. Ralli Holiday Cottages
12. Sahanlahti Resort
13. SaimaaHoliday Oravi
14. Saimaa Cruises with M/S Kuutti
15. Saimaa Fishing Travels
16. Savonlinna Opera Festival
17. TeaHouse of Wehmais
18. Tertti Manor
19. The Muisti Centre of War and Peace







## Saimaa Gastronomy – come on a delicious culinary journey!

The Lake Saimaa region is not only the cleanest and purest part of Finland in terms of nature; it is also a treasure trove of spectacular food. The passionate approach to food at Lake Saimaa is reflected in the fact that a large number of local restaurants work with fresh, local ingredients. Excellent, top-quality ingredients form the basis of culinary pleasures in this region. Saimaa Gastronomy is a network of four companies focusing on local food. When you step inside these places, you know that the experience will whisk you away.

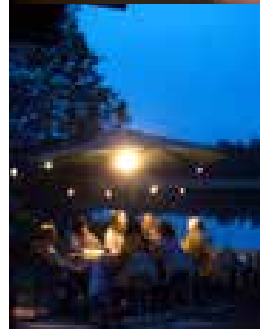


The companies in the Saimaa Gastronomy network are marked with this symbol



## A Finnish style holiday

The Lake Saimaa area offers a taste of Finnish people's favourite type of holiday: the holiday cottage. There are tens of thousands of cottages along the extensive shorelines of Lake Saimaa. Finland's largest lake – voted one of the five most beautiful lakes in the world – is dotted with archipelagos, offering a relaxing holiday. Whatever the season, the cottage is a sacred place for Finns. This is where we can be ourselves, at one with the surrounding nature. If our tips sound difficult or frightening to you, ask a local to join you. When you really get to know a Finn, you have made a friend for life.







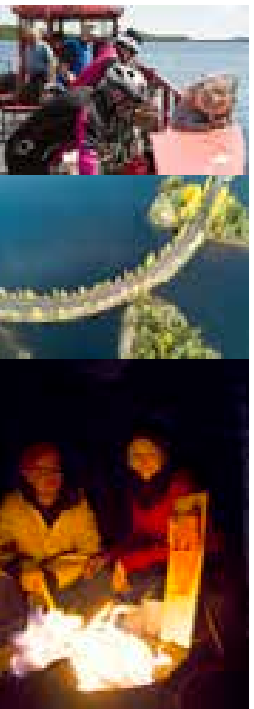
# Take a canoe on the lake, discover river landscapes, & visit rock paintings

The diverse waters of Lake Saimaa offer unforgettable experiences on and around the water and peace and quiet through varying natural surroundings. The Lake Saimaa area is known as Lakeland Finland – water is everywhere. These waters are also home to Saimaa ringed seals and ospreys. With a little luck, a seal may come out to your canoe and greet you.



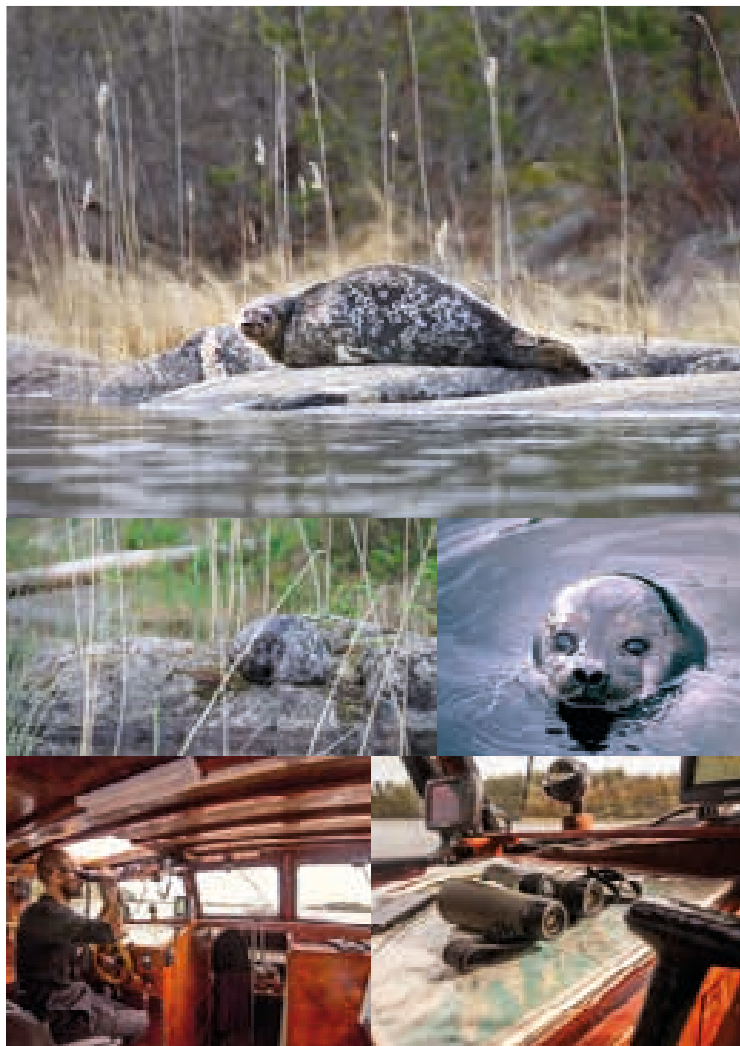
# Bicycle tour of Lake Saimaa archipelago

The stunning 60 km / 37 mile archipelago route in Puumala offers incredible views for both cyclists and motorcyclists. The route includes a short ferry ride and takes you on a journey through local villages and the most beautiful scenery of Lake Saimaa region. Bike rental (standard and electric) available.



## On the trail of the Saimaa ringed seal

Giving Saimaa another one of its unique aspects, is the endangered Saimaa ringed seal – one of the rarest seals in the world, with only around 400 of them surviving today. These curious animals may wave to you from a rock on a sunny spring day or swim by a boat to greet you. Guided Seal Safaris are popular with locals and visitors alike, but are always delivered with minimum disruption to these magnificent animals and their young. You are most likely to spot them in the springtime when they dry their fur in the sunshine.



## Fishing in Lake Saimaa

Come to Lake Saimaa for a safe, interesting and successful fishing trip. Fishing in the Lake Saimaa area focuses on naturally expanding and robust fish stocks, which include pike, pike-perch and perch. The nature of Lake Saimaa is an important resource for all of the region's operators and, in addition to fishing, Lake Saimaa offers a glimpse of the most beautiful parts of Finland: forests, cities and lakes.

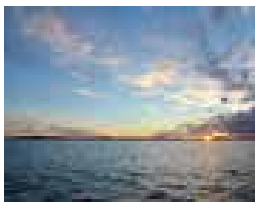
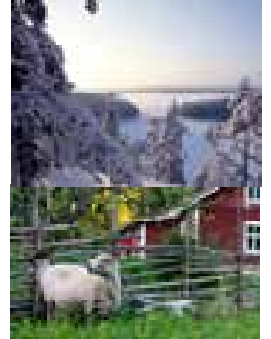






## National Parks and Saimaa GeoPark

In Finland, National Parks are extensive nature conservation areas open for everyone to use. The parks were set up to safeguard the diversity of our nature and to also allow locals and visitors to enjoy the stunning landscapes and views the region has to offer. We have two National Parks at Lake Saimaa – Linnansaari and Kolovesi. Saimaa Geopark brings together geologically, culturally and historically important points of interests in the region.



## Cruises

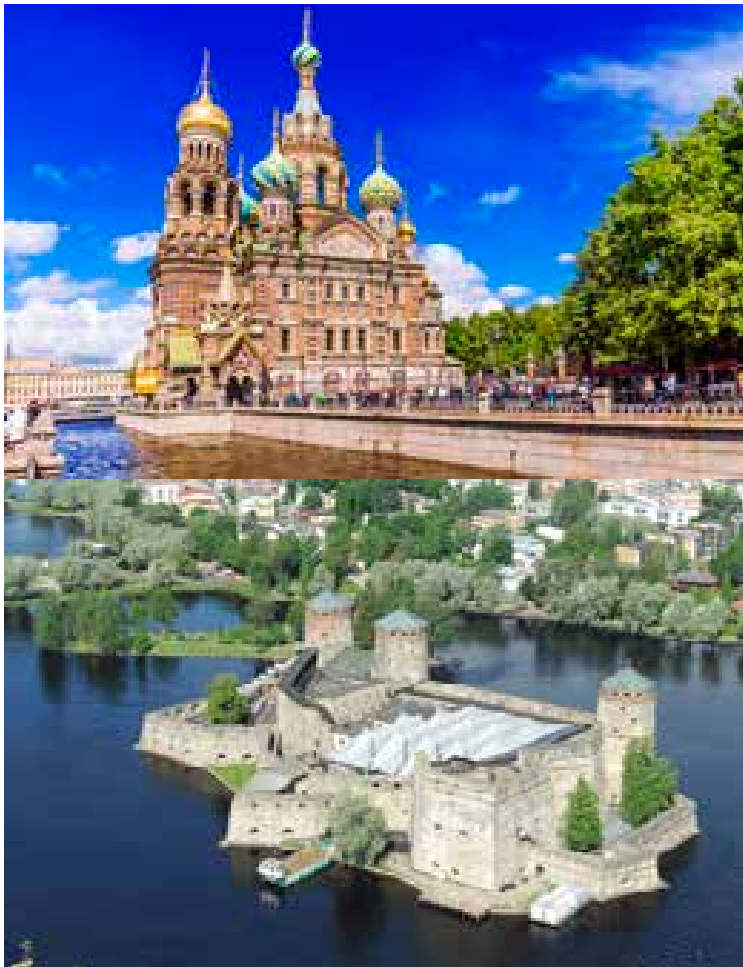
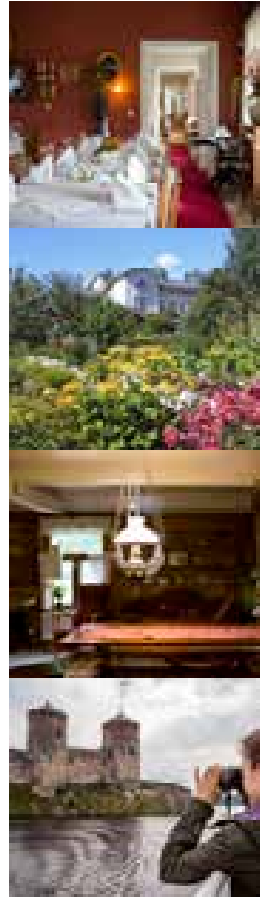
During the summer, you may hear the whistling of a steamboat setting off for a lake cruise. What a way to enjoy the lake scenery, and maybe some good food and a drink. Soak up the old-fashioned atmosphere on steamships decked out in an old style. The steamships are ideally suited to the labyrinthine waterways of Lake Saimaa, and they have a long tradition of plying these waters.





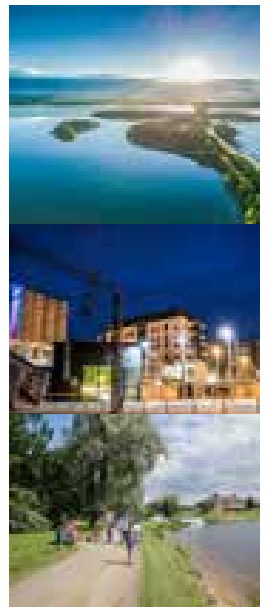
## Culture & Nature

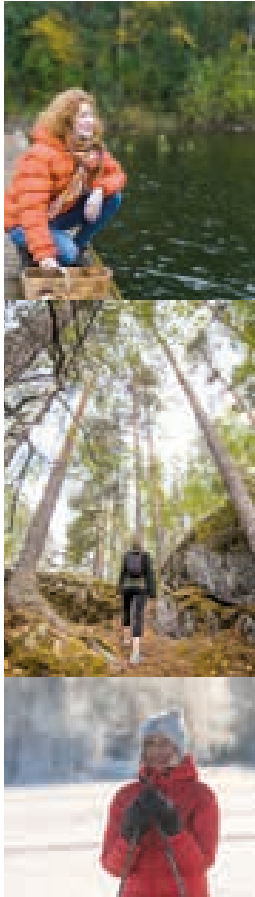
Come and experience a unique opera experience at the Savonlinna Opera Festival! Opera performances take place in the medieval Olavinlinna castle, with a great atmosphere created by excellent sound reproduction, beautiful lighting and amazing sets, with the opera and all the emotions it inspires in the starring role.



## Combine Lake Saimaa & St Petersburg

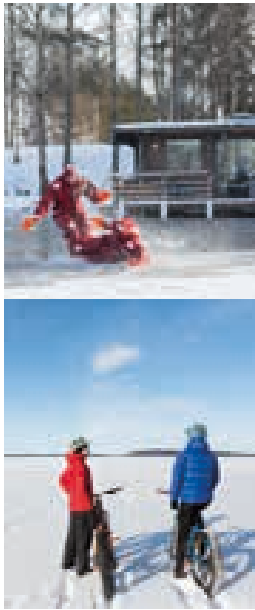
It is easy to combine the tranquil nature of Lake Saimaa and the vibrant city life of St Petersburg. The train journey from St Petersburg to Lake Saimaa (Mikkeli) takes only four hours. Combine two great destinations!





# Forest, water & ice therapy

The stunning hiking destinations in the Lake Saimaa area welcome visitors along easy-to-follow, marked trails through varying terrain. Research has shown that spending time and exercising in natural surroundings is good for people’s wellbeing and health. Nature helps people to recover from stress, forget about their everyday worries and boost their mood. It has been shown that the blood pressure decreases and the heart rate evens out. It really is worth getting out into nature.



# Winter activities at Lake Saimaa

The waterscape of Lake Saimaa’s Lakeland has disappeared! Now it is winter and the landscapes have been replaced by snow-laden trees and the enormous lakes have frozen into a sprawling snow-covered expanse. Have you ever walked over a frozen lake? Lake Saimaa has a range of winter activities and attractions waiting for you, whether you are looking for some time to relax with ice fishing before hopping into the sauna, or an exhilarating adventure over the frozen archipelago by snowmobile or skis.







1

## Anttolanhovi Resort

Anttolanhovi is a diverse resort. Its attractive services guarantee warm moments on the shores of Lake Saimaa surrounded by forest.

Anttolanhovi will take you deep into Lake Saimaa's embrace – an evening here begins with a Saimaa baptism.

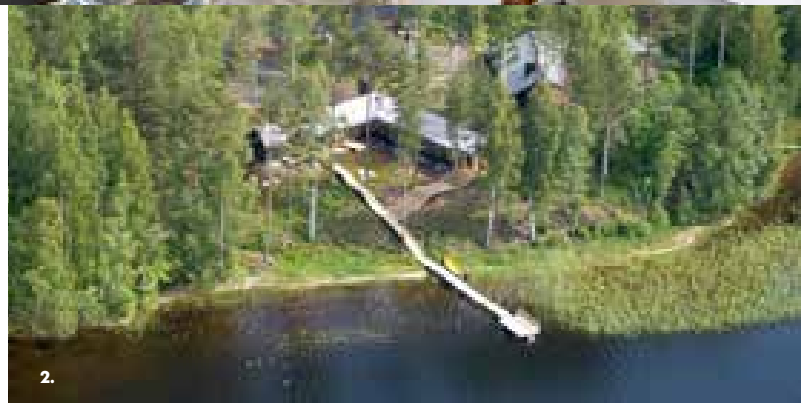
The Saimaa baptism takes place at the atmospheric and individual Kota restaurant on the shore of Lake Saimaa. The unique Kota restaurant, with its open fireplace, provides a stunning dining experience where participants can help to make their own dessert. The warm atmosphere relaxes the mind, and the log cabin represents Finnish architecture at its best.

Anttolanhovi is well known for its very high quality local food, which is made from local ingredients. Finnish local food gets its flavour from the short growing season, and the very clean soil and air.

**1.** The Lakeside Villas are spacious and bright. **2.** Stay in a luxury designer villa in a private setting just 25 metres from the shores of Lake Saimaa.

**3.** Our two-storey villas, designed by Timo Leviskä, are also suitable for more demanding accommodation requirements, as they are designed as semi-detached houses that can be combined into a 5-bedroom unit. **4.** The curative effect of the salt room strengthens the immune system and increases the body's resistance.

**5.** A delicious breakfast and other food services can also be ordered in at the villa.



Distances from	
Helsinki	260 km
St Petersburg	300 km
Mikkeli	25 km
Savonlinna	112 km
Varkaus	98 km

Availability	All year round
Hotel capacity	54 rooms, 103 guests
Prices from	€95
Cottage capacity	19 units, 102 guests
Prices from	€230
Restaurant capacity	2 restaurants, 180 people

x	Lakeside location	x	SPA
x	Canoeing	x	Swimming pool
x	Fishing	x	Sauna
x	Rental bikes	x	Ice skating
x	Cruises	x	Cross-country skiing
x	Saimaa ringed seal – sightseeing cruises	x	Winter activities
x	Hiking	x	Horse riding
		x	Guided services

**Anttolanhovi / Mikler Oy**  
Hovintie 224  
52100 Anttola

+358 44 430 1100  
global.sales@anttolanhovi.fi  
[www.anttolanhovi.fi](http://www.anttolanhovi.fi)



2

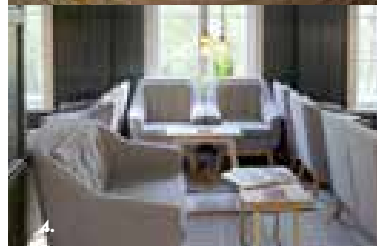
## Hotel Punkaharju



Hotel Punkaharju welcomes you to the heart of nature, its tranquility and beauty – to the top of Punkaharju ridge, one of Finland's national landscapes. Hotel Punkaharju is the oldest guesthouse still open in Finland, originally a forest ranger's lodge with rooms for the travellers from 1845. The lovely building has been totally renewed for tempting guests with its fascinating history, delicious wild food, individual rooms – and the good-natured ghosts of voyagers who have come to admire Punkaharju since the 18th century.

Hotel boasts 11 unique rooms and 12 forest cabins, renovated in 2016. Charming Villa Tsarina accommodates guests in 9 unique rooms in summer 2020.

1. A charming main building stands proudly in stunning pine forest scenery. 2. A restaurant with a lake view invites guests to culinary joys bringing nature to the plates. 3. Gastronomy of hotel Punkaharju is based on a passion to wild ingredients from local nature and producers. 4. Elegant details of interior design invite to relax and enjoy the moments. 5. Saimi Hoyer, a founder and partner of new era of Hotel Punkaharju, is known for her love to Finnish nature and mushrooms.



**Distances from**  
Helsinki 359 km  
St Petersburg 287 km  
Mikkeli 131 km  
Savonlinna 27 km  
Varkaus 115 km

<b>Availability</b>	Hotel: all year round. Restaurant: June–August daily. September–May open at weekends.
<b>Hotel capacity</b>	11 rooms, 20 guests
<b>Prices from</b>	€145
<b>Cottage capacity</b>	12 units, 24 guests
<b>Prices from</b>	€125
<b>Restaurant capacity</b>	1 restaurant, 120 people

x	Lakeside location	SPA
x	Canoeing	Swimming pool
	Fishing	x Sauna
x	Rental bikes	Ice skating
x	Cruises	x Cross-country skiing
	Saimaa ringed seal – sightseeing cruises	x Winter activities
		Horse riding
x	Hiking	x Guided services

**Punkaharjun Luontomatkailu Oy / Hotelli Punkaharju**  
Punkaharjun Harjutie 596, Punkaharju

Myyntipalvelu  
+358 15 511 311  
welcome@hotellipunkaharju.fi  
[www.hotellipunkaharju.fi](http://www.hotellipunkaharju.fi)



3

## Hotel & Spa Resort Järvisydän

Relax at the Hotel & Spa Resort Järvisydän and in the landscapes of Lake Saimaa.

The history of Järvisydän stretches back to 1658, when the first member of the Heiskanen family received a plot of land as a present. He had been working well in the army, but a regulation was introduced requiring him to build a guest house and a place to change horses. Nowadays, a guest house is run by the 11th generation and the history and lakeside nature is cherished in the resort's buildings, surroundings, restaurants and activities.

Hotel & Spa Resort Järvisydän is located in Eastern Finland by Lake Saimaa and next to Linnansaari National Park, where the endangered Saimaa ringed seal lives. We provide unique accommodation and a Lake Spa, Finnish Sauna World, a historical themed restaurant with a lakeside terrace, café and shop, equipment rental centre and guided safaris all year round.

**1.** In the Scenery Suites you can enjoy looking at the starry sky or watching the beautiful Nordic nightless night. **2.** Lake Spa will give you a new kind of Finnish lake wellness experience. The spa is built in the middle of the natural rocks which will give you a genuine and exciting experience. **3.** If you want to enjoy a bit of extra luxury and spend your night on the waves of Lake Saimaa, you can choose to stay in one of our new, fully equipped House Boats. **4.** Norppa - a Saimaa Ringed Seal, is the endangered cute creature, which lives only in Lake Saimaa. Järvisydän provides seal watching trips from the beginning of May, until the end of August. **5.** Join the guided lake nature activities everyday around the year.



**Distances from**  
Helsinki 320 km  
St Petersburg 320 km  
Mikkeli 90 km  
Savonlinna 55 km  
Varkaus 38 km

Availability	All year round
<b>Hotel capacity</b>	22 rooms, 68 guests – €140
<b>Prices from</b>	Scenery Suite 44 rooms, 90 guests – €250
	House Boat 3 rooms, 8 guests – €350
<b>Cottage capacity</b>	13 villas, 118 guests
<b>Prices from</b>	€250
<b>Restaurant capacity</b>	1 restaurants, 1200 people

x	Lakeside location	x	SPA
x	Canoeing	x	Swimming pool
x	Fishing	x	Sauna
x	Rental bikes	x	Ice skating
x	Cruises	x	Cross-country skiing
x	Saimaa ringed seal – sightseeing cruises	x	Winter activities
x	Hiking		Horse riding
		x	Guided services

**Järvisydän Oy**  
Porosalmentie 313  
58900 Rantasalmi

Tanja Heiskanen  
+358 443 601 010  
tanja.heiskanen@  
saimaaholiday.net  
[www.jarvisydan.com](http://www.jarvisydan.com)





4

## Kruunupuisto Health Resort & Villa Urhola

Kruunupuisto is a health resort surrounded by picturesque forests and lake views of Saimaa. Unique location in the Punkaharju Nature Reserve ensures natural peacefulness for everyone visiting us for rehabilitation, well-being and holiday.

Our hotel rooms are located in a beautiful Art Nouveau building originally built as a Sanatorium in 1903. Staying in the main building or more private Villa Urhola gives a historic touch of nostalgia while enjoying renovated and well-equipped rooms.

Kruunupuisto Restaurant serves home-cooked food from buffet breakfast to á la carte dinners based on local produce and seasonal ingredients. The spa and gym facilities, pampering treatments and excellent opportunities for guided indoor and outdoor activities all year around complement your stay.

A holiday in Kruunupuisto means rest, delicious meals, exercise and services for health and well-being – all tailored to your own wishes and needs.

**1.** Well-being amidst unique landscape and clean nature surrounding.

**2.** Villa Urhola provides a blast from the past. **3.** Wide range of rental equipment for various outdoor activities in all seasons. **4.** Experience a traditional lakeside sauna with a wood-burning stove, own terrace and swimming dock.

**5.** Inkeritalo Summer Café is a charming log house by the lakeshore. Caters all year-round by request.



Distances from	
Helsinki	356 km
St Petersburg	290 km
Mikkeli	136 km
Savonlinna	32 km
Varkaus	119 km

<b>Availability</b>	All year round
<b>Hotel capacity</b>	129 rooms, 240 guests
<b>Prices from</b>	€118/superior twin room/night
<b>Restaurant capacity</b>	3 restaurants: Main restaurant 120 people, Inkeritalo 60 people (open daily June–August), Makasiini 60 people (catering by request)

x	Lakeside location	x	SPA
x	Canoeing	x	Swimming pool
	Fishing	x	Sauna
x	Rental bikes	x	Ice skating
	Cruises		Cross-country skiing
	Saimaa ringed seal – sightseeing cruises	x	Winter activities
			Horse riding
x	Hiking	x	Guided services

**Kruunupuisto Oy**  
Vaahersalontie 44  
58450 Punkaharju

Sales service  
+358 20 763 9130  
myyntipalvelu@kruunupuisto.fi  
[www.kruunupuisto.fi](http://www.kruunupuisto.fi)



5

## Kyyhkylä Manor & Hotel

Peaceful location only 7 km from the centre of Mikkeli on the shore of Lake Saimaa.

Cozy rooms in two buildings, romantic Manor or modern Hotel Rustholli. A beach side sauna with a large terrace. Rantakyyhky, a charming summer cafe right on the water.

The manor house ballroom is open daily in the summer and by reservation during the winter.

The Hotel has modern meeting facilities, 2 saunas, 2 sauna cabin, large terrace by the meeting rooms.

In the garden 2 tennis courts, 18-hole minigolf course, frisbee golf course, beach volley court, outdoor exercise equipment's, Nordic walking sticks, bicycles, snowshoes, rowing boats, canoes, a church boat, a kota hut and lean-to. Nature trail and a team course. Gym and the option to book pampering treatments.

1. Historical Manor originally built 1856. 2. Summer Cafeteria Rantakyyhky. 3. Hotel Rustholli. 4. Lake Saimaa view 5. Breakfast room at the Manor.



Distances from	
Helsinki	230 km
St Petersburg	300 km
Mikkeli	7 km
Savonlinna	110 km
Varkaus	91 km

<b>Availability</b>	All year round
<b>Hotel capacity</b>	46 rooms, 76 guests
<b>Prices from</b>	€ 81
<b>Restaurant capacity</b>	Winter 1 restaurant, 100 people Summer 2 restaurants, 160 people

x	Lakeside location	SPA
x	Canoeing	Swimming pool
x	Fishing	x Sauna
x	Rental bikes	Ice skating
x	Cruises	x Cross-country skiing
	Saimaa ringed seal – sightseeing cruises	x Winter activities
		Horse riding
x	Hiking	Guided services

**Kyyhkylän Kartano Oy**  
Kyyhkyläntie 6  
50700 Mikkeli

Pirjo Manninen  
+358 440 203 380  
sales@kyyhkyla.fi  
[www.kyyhkyla.fi](http://www.kyyhkyla.fi)



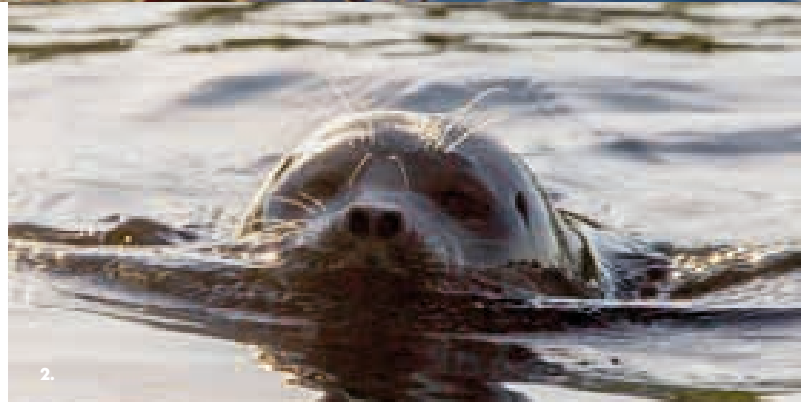
1.

6

## LakelandGTE

Experience Lake Saimaa with professional guide Arto. Guided activities, nature and wildlife tours in Lake Saimaa including the Linnansaari and Kolovesi National Parks and Puumala. Best service guarantee. Seal-watching tours and sightseeing cruises on the electric Ecoboat are ideal for people who value great comfort. A nature tour combined with wildfood foraging and a delicious nature meal make a perfect summer day. We move by canoes, rafts or by the adventure bus. Fishing experiences for both first time and experienced fishermen. In winter you can experience arctic ice floating, ice fishing, snow activities and sightseeing tours by bus. Spend a perfect active day with guide Arto and get the best of Lake Saimaa.

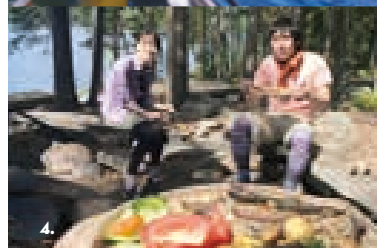
**1.** Ecoboat seal-watching and sightseeing tours. **2.** Saimaa-Seal-watching tours in Puumala. **3.** Nature and canoe tours. **4.** Delicious nature meal on tour. **5.** Arctic ice floating in winter.



2.



3.



4.



5.

Distances from	
Helsinki	300 km
St Petersburg	281 km
Mikkeli	71 km
Savonlinna	77 km
Varkaus	105 km

Availability	All year round
--------------	----------------

	Lakeside location	SPA
x	Canoeing	Swimming pool
x	Fishing	Sauna
	Rental bikes	Ice skating
x	Cruises	Cross-country skiing
x	Saimaa ringed seal – sightseeing cruises	x Winter activities
		Horse riding
x	Hiking	x Guided services

### LakelandGTE

Arto Keinänen  
+358 400 966 800  
arto.keinanen@lakelandgte.fi  
[www.lakelandgte.fi](http://www.lakelandgte.fi)



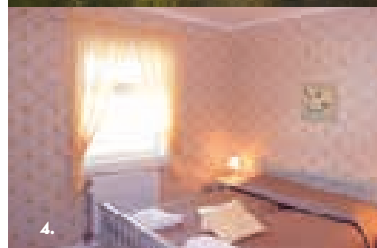
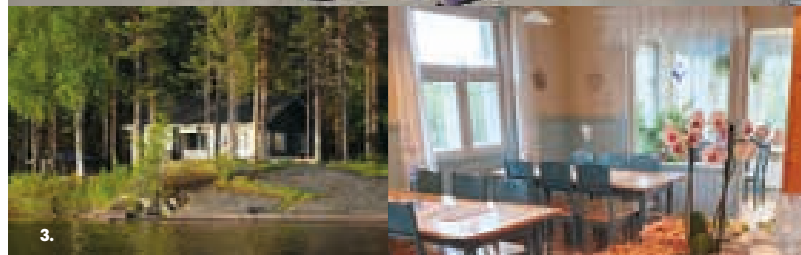


7

## Lomamokkila

Lomamokkila provides an excellent setting for a holiday in Savonlinna in the heart of Saimaa lake area. You can choose Bed&Breakfast in rooms of high quality or enjoy peace and quiet in lakeside cottages all around the year. We also offer delicious meals and use our own products.

Laura, Kalle, Anna, Ella and Eero warmly welcome you to Lomamokkila!



1. In Main building you can enjoy delicious breakfast and dinner.
2. Laura, Kalle, Anna, Ella and Eero warmly welcome you to Lomamokkila!
3. Lakeside cottages offer you peace and quiet.
4. Enjoy different kinds of rooms at the B&B.
5. Home-made breakfast with local ingredients.

Distances from	
Helsinki	335 km
St Petersburg	340 km
Mikkeli	113 km
Savonlinna	12 km
Varkaus	103 km

<b>Availability</b>	All year round
<b>Hotel capacity</b>	21 rooms, 42 guests
<b>Prices from</b>	€70
<b>Cottage capacity</b>	5 cottages, 28 guests
<b>Prices from</b>	€100
<b>Restaurant capacity</b>	1 restaurant Max 42 guests.

x	Lakeside location	SPA
	Canoeing	Swimming pool
x	Fishing	x Sauna
x	Rental bikes	Ice skating
	Cruises	x Cross-country skiing
	Saimaa ringed seal – sightseeing cruises	x Winter activities
		Horse riding
x	Hiking	Guided services

**Lomamokkila**  
Mikonkiventie 209  
57310 Savonlinna

Kalle Björn  
+358 15 523 117  
info@lomamokkila.fi  
[www.lomamokkila.fi](http://www.lomamokkila.fi)

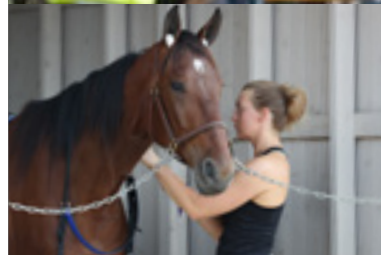


8

## The Trotting Track of Mikkeli

The track is located in Mikkeli, Eastern Finland, about 2 km from the city centre in the beautiful Kalevankangas forest area. The distance between Mikkeli and Helsinki is about 230 kilometres.

Because of its gentle curves the Track is the fastest in Finland and several world records have been made there. The biggest annual race is called St Michel, and the participants are the fastest horses of Europe who come to Mikkeli in order to make a new world record.



Photos: Ville Vuorinen

### Distances from

Helsinki	235 km
St Petersburg	300 km
Mikkeli	0 km
Savonlinna	105 km
Varkaus	90 km

Lakeside location	SPA
Canoeing	Swimming pool
Fishing	Sauna
Rental bikes	Ice skating
Cruises	Cross-country skiing
Saimaa ringed seal – sightseeing cruises	Winter activities
Hiking	Horse riding
	Guided services

**Mikkelin Ravirata Oy**  
Raviradantie 22  
50100 Mikkeli

Toimisto  
+358 15 7600 272  
toimisto@mikkelinravirata.fi  
[www.mikkelinravirata.fi](http://www.mikkelinravirata.fi)





9

## Okkola Holiday Cottages

We are located Puumala, in middle of the most gorgeous archipelago of Lake Saimaa. The individual rental cottages are scattered along the bays and peninsulas of Lake Saimaa in such a way that everyone can enjoy peace and quiet on their own beautiful stretch of the shoreline. We are committed to investing in the quality of our cottages and making sure that all visitors enjoy their visit here.



1. House Paulala is unique. 2. Every house is built on the shore of Lake Saimaa, in its own privacy. 3. Could you imagine, that you are lying in this hammock? 4. House Syrjala. 5. How about winter holiday on the lake Saimaa?

**Distances from**  
Helsinki 290 km  
St Petersburg 290 km  
Mikkeli 82 km  
Savonlinna 100 km  
Varkaus 116 km

<b>Availability</b>	All year round
<b>Cottage capacity</b>	13 units, 76 guests
<b>Prices from</b>	17 units in the summer season, 92 guests €138
<b>Restaurant capacity</b>	1 restaurant 30 people in the winter 160 people in the summer

x	Lakeside location	SPA
x	Canoeing	Swimming pool
x	Fishing	x Sauna
x	Rental bikes	Ice skating
x	Cruises	Cross-country skiing
x	Saimaa ringed seal – sightseeing cruises	x Winter activities
x	Hiking	Horse riding
		x Guided services

**Okkolan Lomamökit**  
Ylösaarentie 35 (Niinisaari),  
Puumala

Paula Okkola  
+358 500 259 378  
paula@okkola.fi  
[www.okkola.fi](http://www.okkola.fi)





10

## Ollinmäki Winery

Ollinmäki winery combines a fully functioning winery and a tourism company. We bring together domestic berries and European wine-making skills and then add some Finnish flair for innovation. As our guests, you will learn about wine making and get to taste and buy award-winning drinks and celebrations! We have three holiday cottages on Lake Saimaa for rental, as well as B&B accommodation.



Distances from	
Helsinki	250 km
St Petersburg	240 km
Mikkeli	18 km
Savonlinna	115 km
Varkaus	96 km

<b>Availability</b>	All year round
<b>Cottage capacity</b>	3 units, 18 guests
<b>Prices from</b>	€99
<b>Restaurant capacity</b>	1 restaurant 150 people

x Lakeside location	x SPA
x Canoeing	x Swimming pool
x Fishing	x Sauna
x Rental bikes	x Ice skating
Cruises	x Cross-country skiing
Saimaa ringed seal – sightseeing cruises	Winter activities
Hiking	Horse riding
	Guided services

**Ollinmäen Viinitila Oy**  
Anttolantie 1640  
52100 Anttola

Sirpa Villanen  
+358 15 653 620  
sirpa.villanen@ollinmaenviinitila.fi  
[www.ollinmaenviinitila.fi](http://www.ollinmaenviinitila.fi)



11

## Ralli Holiday Cottages

Log cabins on the shores of Lake Saimaa for year-round accommodation.

Excellent waters for fishing. Peaceful location, quiet and natural tranquillity. Near to a Natura Nature Conservation Area. Excellent forests for mushroom and berry picking. The villas have their own rowing boat, sandy beach and a dock.

We rent outboard engines for boats.



Distances from	
Helsinki	312 km
St Petersburg	291 km
Mikkeli	98 km
Savonlinna	60 km
Varkaus	90 km

Availability	All year round
Cottage capacity	6 units, 39 guests
Prices from	€70

x	Lakeside location	SPA
x	Canoeing	Swimming pool
x	Fishing	x Sauna
	Rental bikes	Ice skating
	Cruises	x Cross-country skiing
	Saimaa ringed seal – sightseeing cruises	x Winter activities
	Hiking	Horse riding
		Guided services

**Ralli Holiday Cottages**  
Sipilänmäentie 90  
58720 Kaartilankoski

Kaisa Ralli  
+358 400 845 925  
[www.rallinlomamokit.fi](http://www.rallinlomamokit.fi)  
[www.huvila.net/210](http://www.huvila.net/210)



12

## Sahanlahti Resort



Sahanlahti holiday resort offers homely accommodation options with a distinctive character on the shore of Lake Saimaa. Visit our hotel Saha to stay in comfort, enjoy the nature and savour some peace and quiet in our modern villas. We can accommodate up to 60 people, and have also additional accommodation for a further 30 guests a short walk away.

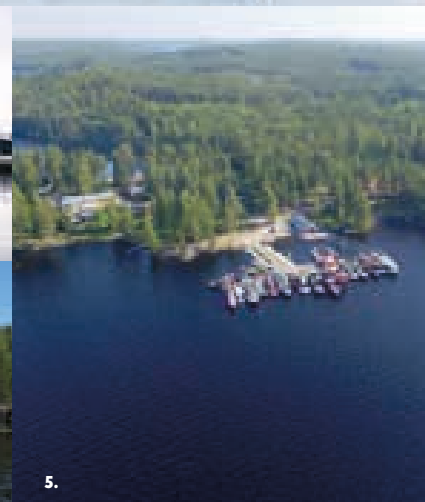
It is our honour to provide you with unforgettable experiences in the stunning setting of Sahanlahti – the glinting Lake Saimaa can be seen from our restaurant tables. The history of the area, the local, organic food, wine and interesting stories are particularly close to our hearts. Koskivahti restaurant offers stunning panorama terrace, unique handmade local food – particularly fish from the lake.

Enjoy active or lazy holiday or organize a memorable party. We have the perfect settings for your occasion.

**1.** Stunning panorama terrace at Koskivahti restaurant. **2.** Enjoy our sauna experiences. Sauna made of ice is built every winter!

**3.** Easy going summer restaurant Rantamakasiini, built on the water offers summer drinks and snacks. **4.** Restaurant Pajapirtti (suitable for groups) with its homely rustic atmosphere and open fireplace.

**5.** The scenic holiday resort Sahanlahti is located by Lake Saimaa and has historically valuable and unique sawmill surroundings.



Distances from	
Helsinki	290 km
St Petersburg	260 km
Mikkeli	63 km
Savonlinna	73 km
Varkaus	102 km

Availability	All year round
Hotel capacity	9 twin / double rooms / single rooms, 1 suite (20 guests)
Prices from	€80
Cottage capacity	12 cottages / apartments (54 guests)
Prices from	€100
Restaurant capacity	3 restaurants, 120 / 55 / 120 people
Other capacity	Several saunas, 2 hot tub, tennis & beach volley court, weekly program on high season

x	Lakeside location	SPA
x	Canoeing	Swimming pool
x	Fishing	x Sauna
x	Rental bikes	x Ice skating
x	Cruises	x Cross-country skiing
x	Saimaa ringed seal – sightseeing cruises	x Winter activities
x	Hiking	Horse riding
		x Guided services

**Sahanlahti Resort Oy**  
Lietvedentie 830  
52200 Puumala

Cecilia Mattila  
+358 400 140 678  
sales@sahanlahtiresort.fi  
[www.sahanlahtiresort.fi](http://www.sahanlahtiresort.fi)





13

## SaimaaHoliday Oravi

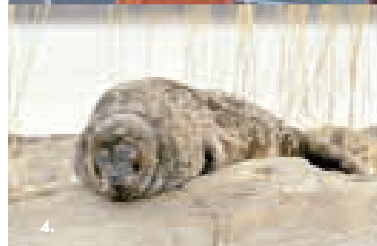
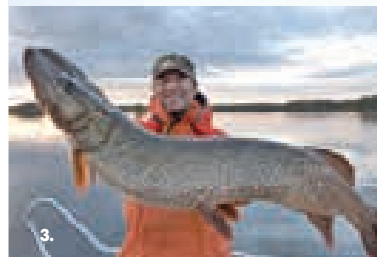
SaimaaHoliday Oravi lies literally in the heart of Saimaa, the largest lake district in Europe only 45 km from Savonlinna. The idyllic village Oravi is located between the National Parks Linnansaari and Kolovesi.

SaimaaHoliday Oravi is offering variety of guided nature activities, the largest canoeing center in Saimaa, 17 high quality lakeside villas, apartment hotel and restaurant services in the village.

Nature activities in Oravi include fishing, nature sightseeing safaris incl. seal safaris, paddling and boating in summer. Tour skating, hiking on frozen lake, ice fishing and snowmobiling in winter.

Enjoy high-quality nature activities all year round.

1. SaimaaHoliday Oravi in the middle of Lake Saimaa offers variety of lake activities.
2. 17 hi-class villas on the shores of lake Saimaa.
3. Great fishing! Guided fishing tours -always with guaranteed catch.
4. Seal watching and lake safaris in Linnansaari National Park.
5. Oravi village in the middle of Saimaa.



Distances from	
Helsinki	370 km
St Petersburg	371 km
Mikkeli	146 km
Savonlinna	42 km
Varkaus	60 km

Availability	Around the year
<b>Hotel capacity</b>	17 rooms, 42 guests
<b>Prices from</b>	€60
<b>Cottage capacity</b>	17 villas, 166 guests
<b>Prices from</b>	€300
<b>Restaurant capacity</b>	100 people
<b>Other capacity</b>	Eco hostel 5 huts / 20 beds

x	Lakeside location	SPA
x	Canoeing	Swimming pool
x	Fishing	x Sauna
x	Rental bikes	x Ice skating
x	Cruises	x Cross-country skiing
x	Saimaa ringed seal – sightseeing cruises	x Winter activities
x	Hiking	Horse riding
		x Guided services

**Saimaan Eräpalvelu Oravi Oy**  
Kiramontie 27  
58130 Oravi

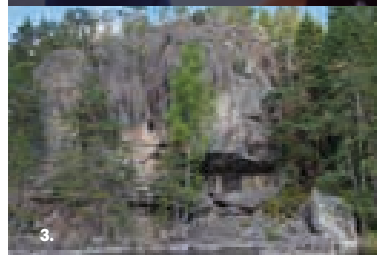
Marie Louise Fant  
+358 44 274 7078  
oravi@saimaaholiday.net  
[www.oravivillage.com](http://www.oravivillage.com)



14

## Saimaa Cruises with M/S Kuutti

Saimaan Saaristo- ja Veneilypalvelut (SSV Oy) provides customers unforgettable experiences on Lake Saimaa. We run boat cruises with M/S Kuutti in the Mikkeli area every week and by reservation. Our home port is Hotel Anttolanhovi. Being a small company brings us many advantages in our services, tailoring cruises and listening to our customers' needs. We warmly welcome you to Lake Saimaa!



1. M/S Kuutti and happy travelers. 2. Sunset at Lake Saimaa.  
3. Astuvansalmi rock paintings. 4. Happy customers. 5. Neitvuori Hill.

Distances from	
Helsinki	254 km
St Petersburg	325 km
Mikkeli	26 km
Savonlinna	108 km
Varkaus	94 km

Availability	All year round
--------------	----------------

x	Lakeside location	SPA
	Canoeing	Swimming pool
	Fishing	Sauna
	Rental bikes	Ice skating
x	Cruises	Cross-country skiing
x	Saimaa ringed seal – sightseeing cruises	Winter activities
	Hiking	Horse riding
		x Guided services

**Saimaan Saaristo- ja Veneilypalvelut Oy**  
Päklahdentie 10  
52100 Anttola

Harri Kerkelä  
+358 44 705 1050  
harri.kerkela@ssvoy.fi  
[www.ssvoy.fi](http://www.ssvoy.fi)



15

## Saimaa Fishing Travels

Our company organises guided fishing tours using three different, very high class fishing boats. We operate in eastern Finland, usually in the southern part of Lake Saimaa, Finland's biggest lake. Our company also has four boats for rent – these can be delivered to the desired location in eastern Finland. Our company was named the Best Fishing Tour Company in Finland in 2014.



**1.** Professional fishing guide Mika Kärkkäinen. **2.** Guided tours available with 3 high quality fishing boats. **3.** 14 years experience in producing successful fishing tours. **4.** Another happy client.

**Distances from**  
Helsinki 223 km  
St Petersburg 284 km  
Mikkeli 20 km  
Savonlinna 120 km  
Varkaus 110 km

<b>Availability</b>	Summer, May to November
<b>Guided fishing capacity</b>	1 – 17 persons
<b>Prices from</b>	€540 / guided boat max 5 persons

x	Lakeside location	SPA
	Canoeing	Swimming pool
x	Fishing	Sauna
	Rental bikes	Ice skating
x	Cruises	Cross-country skiing
	Saimaa ringed seal – sightseeing cruises	Winter activities
	Hiking	Horse riding
		x Guided services

**Fishinno Finland**  
Vasarakuja 2  
52300 Ristiina

Mika Kärkkäinen  
+358 400 907 234  
kalahullu@co.inet.fi  
[www.fishingfinlandia.fi](http://www.fishingfinlandia.fi)





16

## Savonlinna Opera Festival

Located in a mediaeval castle surrounded by clear lakes, offering four weeks of grand emotions and human destinies, the Savonlinna Opera Festival is one of the most radiant and internationally significant events in the Finnish summer calendar – the jewel in the crown. Come and enjoy quality opera in a unique atmosphere with astounding acoustics.



Kuva: Patrik Stenström

### Distances from

Helsinki	330 km
St Petersburg	320 km
Mikkeli	90 km
Savonlinna	0 km
Varkaus	85 km

### Availability

Summer,  
Every year in July  
(3 July–31 July 2020)

x	Lakeside location	SPA
	Canoeing	Swimming pool
	Fishing	Sauna
	Rental bikes	Ice skating
	Cruises	Cross-country skiing
	Saimaa ringed seal – sightseeing cruises	Winter activities
	Hiking	Horse riding
		x Guided services

**Savonlinna Opera Festival**  
Olavinkatu 27  
57130 Savonlinna

+358 15 476 750  
sales@operafestival.fi  
[www.operafestival.fi](http://www.operafestival.fi)



1.

17

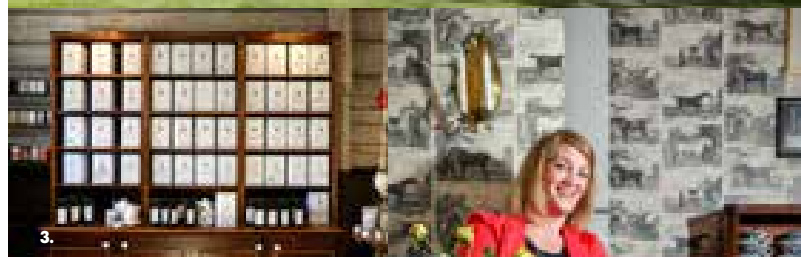
## TeaHouse of Wehmais



A traditional British tea room situated in the Lakeland of Eastern Finland. Next to the tea room we have a Deli&Deco shop. In the tea room, you can enjoy different tea menus with a choice of tea from 100 different varieties. The shop stocks interior products imported from other countries and food products produced by locals. Both companies are unique in their atmosphere.



2.



3.



4.



5.

1. A traditional Afternoon Tea-menu is served with cream, strawberry jam and small pot of tea. 2. TeaHouse is situated in old horse stable and in the backyard is lovely garden. 3. You can find about 100 different teas in our selection. 4. Our popular teadrinks are available in the summertime. 5. Owner Anna Grotenfelt-Paunonen is one of the two Teasommeliers in Finland.

**Distances from**  
Helsinki 280 km  
St Petersburg 300 km  
Mikkeli 45 km  
Savonlinna 55 km  
Varkaus 45 km

<b>Availability</b>	All year round
<b>Restaurant capacity</b>	1 restaurant 45 people inside, 30 in the garden during summer, 60 at our party venue

Lakeside location	SPA
Canoeing	Swimming pool
Fishing	Sauna
Rental bikes	Ice skating
Cruises	Cross-country skiing
Saimaa ringed seal – sightseeing cruises	Winter activities
Hiking	Horse riding
	x Guided services

**TeaHouse of Wehmais**  
Pieksämäentie 234  
51900 Juva

+358 40 4101 626  
tee@teahouse.fi  
[www.teahouse.fi](http://www.teahouse.fi)



18

## Tertti Manor



Tertti Manor is a functioning farm, a haven for gourmands and a cosy farm hotel located by main road 5. The Manor Shop and the Dairy Café are open every day from 10am to 6pm. Lunch is served daily. The main building's restaurant and our charming guest rooms are available all year round by request. We are always here for you!



1. If the walls could tell... Feel the classic atmosphere in Manor restaurant.  
2. Tertti Manor is a functional farm with barley fields and different gardens.  
3. Family Pykkänen has owned Tertti Manor since 1894. 4. Beautiful manor building seen from the lake. 5. Dinner in Manor restaurant is perfect way to taste the local delicacies.

**Distances from**  
Helsinki 230 km  
St Petersburg 316 km  
Mikkeli 7 km  
Savonlinna 89 km  
Varkaus 89 km

<b>Availability</b>	All year round
<b>Hotel capacity</b>	6 rooms, 16 guests
<b>Prices from</b>	€99.50
<b>Restaurant capacity</b>	1 restaurant, 110 people

x	Lakeside location	SPA
	Canoeing	Swimming pool
	Fishing	x Sauna
x	Rental bikes	x Ice skating
	Cruises	x Cross-country skiing
x	Saimaa ringed seal – sightseeing cruises	x Winter activities
		x Horse riding
x	Hiking	x Guided services

**Tertti Manor**  
Kuopiontie 68,  
Mikkeli

Heli Pöyry and Nina Erkkilä  
+358 15 176 012  
tertti@tertinkartano.fi  
[www.tertinkartano.fi](http://www.tertinkartano.fi)





19

## The Muisti Centre of War and Peace

The Muisti Centre of War and Peace is a center of knowledge and learning resources that exhibits wartime experiences and memories, as well as various related phenomena.

**Opening April 2021**

**1.** This is a story that cannot be forgotten, this is a story we have to learn from. The Muisti Centre of War and Peace is a place, where memories are stored. Picture: SA-kuva. **2.** Muisti offers interactive and game-based activities utilising the latest digital technologies, such as virtual and extended reality. **3.** Muisti is located in the wartime headquarters of the Finnish Army in Mikkeli and the city block surrounding it. **4.** At the time of World War II, Marshal of Finland, C. G. E. Mannerheim led the Finnish Army. He spent most of the time in his Mikkeli headquarters. The former study of Mannerheim is located in Headquarters Museum next to Muisti and can be visited during the tour. Picture: SA-kuva. **5.** In the exhibitions of Muisti, war will be seen from many perspectives and through the experiences of individuals, while utilising scientific research.



**Distances from**  
Helsinki 230 km  
St Petersburg 300 km  
Mikkeli 0 km  
Savonlinna 100 km  
Varkaus 90 km

**Availability** Opening April 2021.  
All year round

Lakeside location	SPA
Canoeing	Swimming pool
Fishing	Sauna
Rental bikes	Ice skating
Cruises	Cross-country skiing
Saimaa ringed seal – sightseeing cruises	Winter activities
Hiking	Horse riding
	x Guided services

**Sodan ja rauhan keskus**  
**Muisti Oy**  
Päämajankuja 1-3  
50100 Mikkeli

Marianne Lindroth  
+358 50 475 1189  
info@muisti.org  
www.muisti.org

# VISIT SAIMAA

LAKE LAND  
FINLAND



# VISIT SAIMAA

LAKE LAND  
FINLAND



**VISIT  
SAIMAA**  
LAKE LAND  
FINLAND

**MARKO RIABKOV**  
Marketing Manager

marko.riabkov@mikseimikkeli.fi  
+358 44 794 5004

**MINNA GURNEY**  
Project Manager

minna.gurney@mikseimikkeli.fi  
+358 44 359 8655

Mikkeli Development Miksei Ltd  
Maaherrankatu 22, 50100 Mikkeli, Finland  
[visitsaimaa.fi](http://visitsaimaa.fi)



Leverage from  
**the EU**  
2014–2020