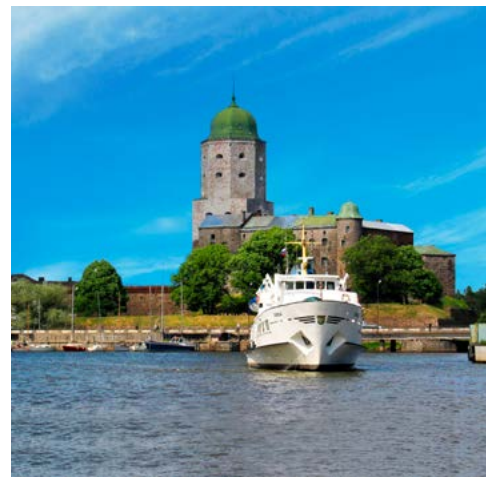


# LAPPEENRANTA & IMATRA REGION

LAKE SAIMAA FINLAND 2018







## LAKE SAIMAA FINLAND: LAPPEENRANTA AND IMATRA REGION

Lappeenranta and Imatra region by Lake Saimaa is located near the Russian border only a couple of hours away from the Finnish capital Helsinki. From Helsinki you can easily get here by train, bus or car within just a few hours. You can also travel visa-free to Russia in summertime from Lappeenranta and combine the beautiful Lakeland nature with the cultural metropolis of St. Petersburg.

### LAKE SAIMAA - FINLAND'S LARGEST LAKE

The gem of the area is Saimaa, Finland's largest and Europe's fourth largest lake. It was also listed to be in top 5 most beautiful lakes in the world by the Wallstreet Journal in 2014. Lake Saimaa covers an area of 4.460 sq.km and has over 13.000 islands. In the waters of Lake Saimaa, by far the greatest attraction is nature: the archipelago and lake scenery and the clear water. The waters of Lake Saimaa, dotted by thousands of islands, provide excellent opportunities for boating. The lovely lake scenery can be marveled at on cruises and by walking in the forest picking local berries and mushrooms.

### VARIETY OF ACTIVITIES AT LAKE SAIMAA

There are lots of enjoyable winter activities to fill your days with in the Lake Saimaa region. In wintertime the magnificent environment can be enjoyed on ATV or husky safaris, snowshoe hikes and tour skating or ski trips. By Lake Saimaa it is possible to enjoy the atmosphere of a traditional Finnish sauna in the many cottages, spa resorts and hotels.

In the summer time the most popular activities are cruises, stand up paddling, biking, hiking and fishing. Adventure Parks in the region offer an active day for the whole family. The speciality of the region are the visa-free cruises from Lappeenranta to Russia (Vyborg, St. Petersburg).

### ACCESSIBILITY

Lappeenranta is located 220 km from Helsinki and only 190 km from St. Petersburg. Lappeenranta and Imatra are located next to each other, only 35 km apart. Lappeenranta is the starting place of Finland's largest Lake called Saimaa. Lappeenranta International Airport (LPP) offers a great opportunity for charter or scheduled flights. We have worked to-

gether with Ryanair, airBaltic and Blue1 in the past. [www.lppairport.fi](http://www.lppairport.fi)

### goSaimaa Ltd – REGIONAL MARKETING ORGANIZATION

We are here to help you. goSaimaa Ltd is responsible for the marketing of Lappeenranta and Imatra region and provides information about the tourism services in the region. We will help you find the right contacts in our region and we work very closely with the local tourism companies.

We also organize familiarization tours together with Visit Finland and other partners.

Follow us:

[www.gosaimaa.com](http://www.gosaimaa.com)

[www.facebook.com/lakelandfinland](https://www.facebook.com/lakelandfinland)

[www.instagram.com/gosaimaa](https://www.instagram.com/gosaimaa)

[www.youtube.com/gosaimaa](https://www.youtube.com/gosaimaa)

#### Contact

goSaimaa Ltd  
[www.gosaimaa.com](http://www.gosaimaa.com)  
[info@gosaimaa.com](mailto:info@gosaimaa.com)

Katja Vehviläinen  
Development Director, marketing and projects

Tel. +358 44 717 7991  
[katja.vehvilainen@gosaimaa.com](mailto:katja.vehvilainen@gosaimaa.com)

Riina Helppi-Kurki  
Project manager  
Tel. +358 40 845 2857  
[riina.helppi-kurki@gosaimaa.com](mailto:riina.helppi-kurki@gosaimaa.com)

**Number of hotels:** 21

**Number of cottages:** hundreds in the region

**Capacity:** 3850 beds

**Winter activities:** ATV, husky safari, dry suit floating, skiing, nordic tour skating, ice fishing, reindeer rides etc.

**Summer activities:** cruises, ATV, SUP boarding, parasailing, biking, hiking, horseback riding etc.

**Airport:** Lappeenranta International Airport, Helsinki 220 km

**Train station:** Lappeenranta, Imatra, Vainikkala (for Allegro trains)

**Border crossing points:** Vainikkala (train), Nuijamaa, Svetogorsk/ Imatra and Vaalimaa with car/ bus.

## Distances

Helsinki ..... 220 km  
Vyborg ..... 60 km  
St. Petersburg ..... 210 km

For changes and updates regarding flight routes and destinations log on to [lppairport.fi](http://lppairport.fi). Lappeenranta International Airport (LPP) is located only 2 km from the city centre.

## ON THE MAP







## ATTRACTIONS & SIGHTS IN SAIMAA

### SAIMAA RINGED SEAL

Probably the most interesting inhabitant of Lake Saimaa is the Saimaa ringed seal. The endangered freshwater seal species has been protected since the 1960's. Only app. 300 animals are living in two national parks in Lake Saimaa. In spring and summer, it is strictly forbidden to go by boat to parts of the lake as well as fishing. With luck hikers and paddler may cast a glance of the Saimaa ringed seal. In quiet moments, it is even possible to observe the animals without disturbing them.

### SAIMAA CANAL

Saimaa Canal connects Finland's biggest lake, Lake Saimaa, with the city of Vyborg (Finnish Viipuri) in Russia. The canal was opened in 1856. Today it is used both trading and for tourism. It is 42,9 km long. The Finnish part is 23,3 km long, on the Russian side the Canal has 19,6 km. During a river cruise from Lappeenranta to Vyborg and St. Petersburg you get to know all the Saimaa Canal in all its historical and scenic facets. Vyborg is one of the oldest Russian towns and offers special sights as well as good shopping opportunities. From Vyborg it only takes a little while to the impressive city of St. Petersburg. Guest of the city are stunned by its art, culture and splendor. A cruise from Lappeenranta to Russia does not require a visa.

### RAPIDS OF IMATRA

The rapids of Imatra in River Vuoksi are the oldest sight of Finland. Already in the 17th century people travelled to Imatra to gaze at it. In the 18th century it ranked among the most important tourist attractions in Europe, together with the Eiffel Tower. The first nature park of Finland was founded here at this time, "Crown Park" (Kruununpuisto). 1929 the rapids were diked and a hydropower station was built on the shore. Since this time water has spouted out with its original power for performances only. Then the 500.000 l water per second streams for almost 20 minutes into the rocky riverbed. From July to August performances are held daily at 6 pm with background music. You may even cross the rapids by cable car.

### HARBOR OF LAPPEENRANTA

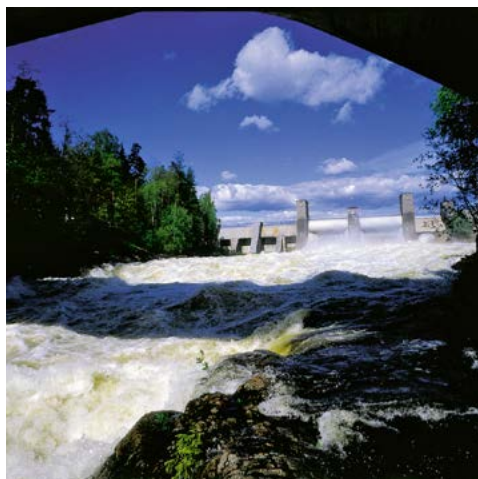
The Harbor of Lappeenranta is a whole family destination full of activities and events. Harbor is located between fortress of Lappeenranta and Myllysaari family park. Harbor is a heart of the city and there you will find the true soul of locals. During summertime there are numerous performances on the harbor stage and lots of events for the whole family. You can watch events from terrace of a ship restaurant while enjoying your drink and a delicious meal. On the market square of the harbor you can always find something interesting. Fresh strawberries and crispy fried vendace can also be found on the harbor market square. In summer, you will find Vety and Atomit, favorite snacks of locals from the harbor kiosks. Tasty meat pies filled with egg and ham will definitely win your heart and keep the hunger away. Every year a huge Sandcastle is built in the harbor of Lappeenranta. Tons of sand turn into magnificent sculptures and figures, bringing joy and amusement for locals and tourists. From the harbor you can go on a landscape cruise around archipelago and Saimaa Canal. You can also embark on a visa-free cruise to Russia.

### HAUKKAVUORI

Haukkavuori is located by lake Sarajärvi. Haukkavuori is the highest place in Ruokolahdi and even in South Karelia. Measured from the Sarajärvi water surface, the Haukkavuori is 80 meters high. From Haukkavuori is gorgeous view towards Sarajärvi and the place is owned by Finland's cultural heritage association. Haukkavuori is one of the Natura-targets in South Karelia. This sight holds also a border marker (1722) of Uusikaupunki peace in the year 1721. Haukkavuori is a popular attraction among families.

### KRUUNUNPUISTO PARK

In 1842, Tsar Nicholas I established the first nature reserve in Finland in the area surrounding the Imatrankoski Rapids. The best way to get to know the Kruununpuisto Park is to follow the marked Historic Trail. Imperial lookout pavilions, rock carvings, potholes etc.







The new City Brook in Imatra

Within the vicinity of the Imatrankoski Power Plant in the Kruunupuisto (Crown Park) area, a kilometer-long City Brook has been built which brings the area's history and geology to the fore. The brook divides into a scenic upper course and natural lower course, which also has trout.

#### **KUMMAKIVI/ STRANGEROCK**

Kummakivi is a huge, approximately 7 meters long, boulder that is oddly balancing on a smaller, round rock. It touches the other rock with so little surface that it looks like a giant balancing on one toe. What makes it special is the fact that it stayed there, balancing for millions of years. Lots of people tried to move it, even with dynamite, but all in vain.

If just seeing a magnificent rock in the middle of nowhere doesn't excite you, remember that sometimes the journey is more important than destination. The journey to this strange rock can be done along a beautiful landscape, crossing the "moss bridge" built in 1930 over the lake. Kummakivi is located 30 km from the center of Ruokolahti.

#### **LAPPEENRANTA FORTRESS**

Surrounded by the ramparts, this historic district represents the original town which was founded in a medieval trading center during the Swedish regime in 1649. Most of the buildings date back to the Russian era, which lasted from 1741 to 1917. Following renovation, they now house private residences, handicraft workshops and cultural and business premises. Graced with a fascinating history, magnificent scenery and a myriad attraction, the Fortress is today a popular tourist destination. The city of Lappeenranta was officially founded in 1649 by Queen Christina of Sweden, but the tale of the town had begun much earlier: in the Middle Ages, the Fortress became a bustling market place. Following the Battle of Lappeenranta in 1741, Sweden had to surrender the Fortress of Lappeenranta to Russia. A monument was erected in front of the ramparts of the Fortress in memory of the thousands of soldiers who perished in the battle. The fortification work which the Swedes had begun was subsequently continued by the Russians. The oldest surviving building in the Fortress date

from the Russian period in the 1770s. Among those directing the fortification works was Count Aleksander Suvorov who had been assigned to the task and sent to south-east Finland by the Empress of Russia, Catherine the Great. The Fortress thus became an important link in the three-stage-fortification system designed to protect St. Petersburg.

Today the Fortress area is an interesting attraction for tourists as well as local people: you can enjoy your dessert at the lovely old fashioned café Majurska, visit the handicraft shops and buy some local souvenirs to take home! Additionally, three museums are located in the Fortress: Lappeenranta Art museum, South Karelia museum and the Cavalry museum – and don't forget to take a picture of the oldest Orthodox church in Finland.

#### **SALPALINJA FORTIFICATIONS**

Salpalinja constructions from the years 1941-44 in eastern parts of Luumäki. Salpalinja forms Finland's largest line of defense. The building of the fortifications was begun in 1940-41 by order of Marshall Mannerheim, then the Supreme Commander of the Finnish Army. The Salpalinja is made of over 1200 kilometers of reinforced concrete, wood, barbed wire and stone. The reconstructed bunkers in Luumäki, Lemi, Roukolahti and Ylämaa are worth to visit.

The purpose of the fortification system was to protect Finland's eastern frontier.

During the construction period, the fortification system represented the largest building site in Finland: over 35000 men worked there, with 2000 women supplying the builders with provisions. Salpalinja stretched all the way to the northern frontier of Finland, and full advantage was taken of the contours of the terrain in the course of its construction. The fortified section which remains in Luumäki features a variety of tank traps, and dugouts used by the soldiers of the Finnish Army.

Salpa-asema is situated in Luumäki, right next to Highway 6. At this fascinating site, the visitor has the opportunity to explore the comprehensive fortification system dating from the days of the Continuation War (1941-44). The Salpalinja Fortifications are open in summer, and by prior arrangement.

#### **THE CHURCH OF THE THREE CROSSES**

Aalto planned the church also for other activities in the parish besides services. Therefore the church can be divided into three parts. In the church there are seats for 800 persons. The windows and lightning are high up, which creates fascinating display of light and shadow. The Church of the Three Crosses was completed in 1957.

The stained glass on the ceiling is as old as the church and also designed by Alvar Aalto.

#### **YLÄMÄÄ GEM MUSEUM**

Ylämaa gem museum was founded in the year 1982. The museum is the first gem museum in Finland that is open for public. Over 250 000 visitors have visited in Ylämaa gem museum at this moment.

The exhibition presents at this moment already over four thousand pieces of gem, mineral and fossil from all over the world. The specialties of the museum are genuine fossils of dinosaur and mammoth, and different types of meteorite.

#### **SANDCASTLE LAPPEENRANTA**

More than three million kilos of sand is used to build the Sandcastle, which is the favorite attraction in Lappeenranta for families with children. The Sandcastle features a different theme each year and it's a joint project of many international and Finnish sculpturers. The Sandcastle area is open yearly between June and August. Additionally the street train tours depart from this area.

#### **SKIING TRACK IN IMATRA**

Enjoy skiing on real snow already in October! In Imatra, Ukonniemi, tracks are made of real snow that has been kept from the previous year. This guarantees the best possible skiing experience for you! The tracks are located in the wooden terrain between the new Ukonniemi Stadium and Imatra Spa. There is a shooting range with thirty lanes for biathlete.

There are well equipped maintenance facilities in the stadium and a good variety of hotels, spas and services of the Imatra town e.g. for organizing a training camp.





## A ROUND TRIP IN LAKE SAIMAA'S REGION

The lake Saimaa region offers plenty to see and do, marvel at and shop for. By car you can easily and conveniently tour the sights and explore a large area in a short time. You can start your journey in Helsinki and continue towards Lappeenranta which is located about a 2,5 hour drive away from the capital city. The four cities in the Lake Saimaa region offer a wide range of attractions, events and interesting activities. Once outside the urban area, you can go for an energising excursion in the beautiful nature of the Saimaa region. You can also cross over into Russia at the three border checkpoints in Imatra, Nuijamaa and Vaalimaa, a visa is needed for the trips to the Russian side. Visa-free cruises are available only during the summer season from May to September.

The active summer in the Saimaa area is full of fun things to do. In the waters of Lake Saimaa, by far the greatest attraction is nature: the archipelago and lake scenery and the clear water. If you are lucky, you may even see a Saimaa ringed seal basking on a rock on a summer's day. There is plenty to do for fishing enthusiasts on the waters of Lake Saimaa that occasionally offers really big catches. For nature travelers, the Saimaa area has plenty of trails to hike and walks of various lengths. The beautiful archipelago views along the cycling routes make the trip fly by and the many sights and cafés are great places for taking a break. Additionally, you can choose from versatile activities such as cruises, golf, canoeing, floating, parasailing and ATV safaris.

### 1. LAPPEENRANTA

Lappeenranta is the regional centre of South Karelia, which shows in its range of activities and number of events. The Fortress of Lappeenranta, the Old Town, and the Pusupuisto Park (Kissing Park), are definitely worth a visit. The history of the fortress was deeply influenced by the Russian soldiers housed there, and their mark is still visible in the area. In the summertime, the Lappeenranta harbour is a vibrant area, its restaurants and cafes filling up with people who come to enjoy refreshments. The restaurant boats and harbour market in particular offer a pleasant experience to visitors. You can also rent bicycles, SUP boards and canoes in the harbour area.

### 2. IMATRA

The first thing visitors usually see when they arrive in Imatra is the impressive Imatrankoski rapids, which unfortunately will not be gushing this year due to repair work. The area is still worth a visit, as it is also home to Finland's oldest nature reserve, the beautiful Kruununpuisto "Crown Park". The arresting natural surroundings provide easy access to exciting giant's cauldrons, Finland's largest hydroelectric power station and the imposing castle hotel Valtionhotelli, constructed in 1903. Near the town centre you will find the Vuoksi Fishing Park, where you can fish for a fresh lunch yourself or enjoy a delicious portion of Finnish salmon soup.

### 3. MIKKELI

Mikkeli is the regional centre of South Savo, known particularly for its bustling market place in the summer. The marketplace stalls have provided visitors with events and activities and delicious local food since 1744. Mikkeli also serves as the departure point for an excursion to Neitvuori, the highest lookout in South Savo, which gives great views of Lake Luonteri. The signposted hiking trails and the trail stations equipped with toilets and campfire places encourage visitors to head out. When in Mikkeli, you should also visit the Kenkävero area, which housed a vicarage until 1969. It was then converted into a restaurant, catering to some of Finland's foremost authors and other prominent persons. You can still sense the traditional Finnish culture in the place, while enjoying a delicious meal.

### 4. SAVONLINNA

The Savonlinna Opera Festival is reason enough to plan a holiday in Finland. The month-long festival attracts many people to the town, where visitors will find plenty to do from morning to night. Should accommodation in Savonlinna run low, you can also stay in Imatra, which is just a short drive away. The 2018 festival will take place from 6 July to 4 August. If your holidays do not coincide with the festival, Olavinlinna castle, the construction of which started back in 1475, is another great attraction in Savonlinna. Since it is hard to over-advertise the natural surroundings of Finland and Saimaa, we should also mention Linnansaari National Park. Home to the Saimaa ringed seal, this awe-inspiring island is located a 30-minute drive and a boat ride away from Savonlinna.

#### Distances

From Helsinki to Lappeenranta	220 km
From Imatra to Lappeenranta	36 km
From Imatra to Savonlinna	125 km
From Savonlinna to Mikkeli	104 km
From Mikkeli to Lappeenranta	109 km

#### Round trip examples in Lake Saimaa region

You can find roundtrip example programmes on [www.gosaimaa.com](http://www.gosaimaa.com) for active travelers as well as for culture and food lovers. Please contact goSaimaa for additional information or to find the right contacts in the region.





## LAKE SAIMAA & ST. PETERSBURG EXPERIENCE

Lappeenranta and Imatra are located in the region of South Karelia in south-eastern Finland. The magnificent metropolis of St. Petersburg is just about 200 km away from Lappeenranta and Imatra.

### DAY 1

#### Old town of Lappeenranta, the historical Fortress area

A guided walking tour and visit to the local handicraft shops.

#### Finnish lunch and baking Karelian pies

Karjalanpiirakka or Karelian pies, as they are also known, fit into your hand and melt in your mouth.

#### Canoeing on Lake Saimaa

For beginners, sheltered shores are found for more relaxed progress, and there are more demanding routes for more experienced canoeists in the lake and strait sections.

#### Dinner at Säräpirtti Kippurasarvi restaurant in Lemi – local traditional food

Prepared from a thousand-year-old recipe, this traditional lamb roast is delicious beyond compare!

#### Spa and sauna world at Holiday Club

#### Saimaa Cirque de Saimaa Spa

#### Accommodation at Holiday Club Saimaa spa resort in the Rauha area of Lappeenranta

The rooms of the spa hotel Holiday Club Saimaa are situated in three separate hotel wings, each with its own unique atmosphere. Additionally, holiday apartments are available if you wish to stay for 2 nights. If you wish to stay in the city center of Lappeenranta several hotels, such as the renewed Original Sokos Hotel Lappee are available.

### DAY 2

#### Vuoksi Fishing Park in Imatra city center by the Vuoksi river

Catching fresh fish from local waters either guided or on your own. If you prefer to enjoy the warmth of a sauna you can try the floating sauna located next to the Fishing park.

#### Lunch at the historical Cumulus Resort

#### Imatran Valtionhotelli in Imatra City center

Imatra Valtionhotelli is an art nouveau style castle by the Imatrankoski rapids built in 1903. The Crown Park, which is the oldest nature park in Finland, is located next to the hotel in addition to the Imatrankoski rapids.

#### Floating in Lake Saimaa or River Vuoksi

This activity will take you to a safe, relaxing journey on the gentle flow of river Vuoksi or clear waters of lake Saimaa. If floating is not your thing you can try stand up paddling (SUP) instead.

#### Accommodation at Imatran Kylpylä Spa with sauna

The hotel offers a diverse selection of services regardless whether you are travelling on your own, in a company of two, with a family or a group. In addition, holiday apartments are available if you wish to stay for 2 nights.

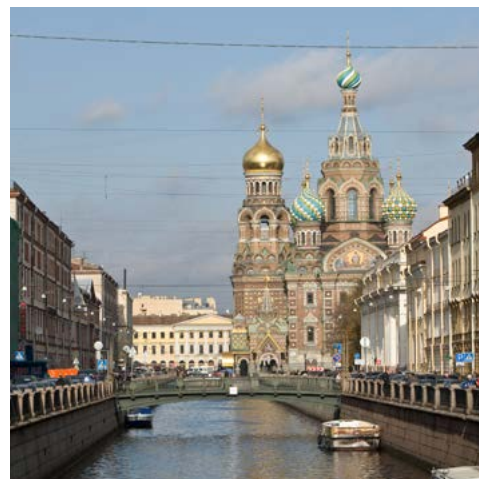
### DAY 3-5

#### From Lake Saimaa to St. Petersburg

While visiting Lappeenranta and Imatra region it's very convenient to use the opportunity and spend a few days in St. Petersburg in Russia. Trendy and unique St. Petersburg is full of outstanding sights and cultural treasures of Czarist time - yet it is a modern city with endless attractions. There are many ways to travel to St. Petersburg, ranging from a comfortable train ride in Allegro train with restaurant (1,5 hours from Vainikkala/ Lappeenranta), to a private bus for your own group. In the summer time the visa free cruises from Saimaa Travel departing from Lappeenranta are the most popular means of transport (cruise season May-September). 3-day package tours are available during summer, you can stay as long as 72 hours in Russia without a visa.

#### Quad-bike safaris by Saimaa Adventures to Russia (visa is needed)

If museums, shopping and other city life are not what you're looking for in Russia, consider departing on a bumpy adventure on a quad-bike through Russian forest roads with a few friends!







## ACTIVE WINTER HOLIDAY AT LAKE SAIMAA

The Saimaa area does not quieten down for winter. As nature gets dressed up in its winter gear, the curtain of Saimaa pulls back to unveil completely new opportunities. When it gets freezing, you can go skating on the lake; but there is no need to forget about tricking the fish. As rowing boats rest for the winter, skates and skis are fetched from summer storages.

### DAY 1

#### Trying out traditional Finnish skiing

Cross-country skiing is part of Finnish culture, and nearly every Finn learns it right after taking the first steps. A short skiing trip either in the forest or on natural frozen ice offers a new experience.

#### Nordic Tour skating on natural ice or walking on ice

Tour skating is a popular outdoor activity and a great means of enjoying the frozen waterways and beautiful scenery. All types of supportive equipment are available when heading out to the ice. Also a walk on frozen ice is a great place to take pictures.

#### Visiting a local ice hockey game

Ice hockey is the most popular sport in Finland. The atmosphere at the home games of Lappeenranta's SaiPa – which plays in Finland's top ice-hockey league (Liiga) – is raised to the roof.

### DAY 2

#### Husky safari

You get to steer your own sled through the wintery forests and breathtaking scenery. Riding on the frozen lake is also possible.

#### Parasailing

Parasailing suits for everyone. To do it you do not need any training, and can start enjoying the feeling of flying over landscapes as soon as you begin. During the winter parasailing is done on ice by a snowmobile to a maximum height of 70 m.

#### Winter fishing

Good places for catching fish in the Saimaa region are Vuoksi Fishing Park (Vuoksen Kalastuspuisto) in Imatra and local waterways that have stocked fish.

### DAY 3

#### Reindeer rides

Reindeer rides are organized near Holiday Club Saimaa in the Rauha area of Lappeenranta. Rides usually last from 10 minutes to a few hours. Speeds stay moderate, which makes them suitable for all ages.

#### Floating in Lake Saimaa or River Vuoksi

Floating in the cold winter weather is a remarkable experience: you'll face ice-cold water and the heat of a dry suit!

#### Optional activities for smaller groups:

- Visiting a local home and baking blueberry pie
- Guided tour to the Salpalinja Fortifications line built in 1941–44
- "Looking at the stars" guided tour by night
- Beauty and massage treatments at the spa

#### Accommodation

Choose a holiday apartment or a cozy cottage, if you want to experience the virgin nature of South Karelia and the peace of the wilderness. City centre hotels are an excellent choice for people who want to be near restaurants, shops and other services.







## TRAINING, SPORT AND CHILDREN CAMPS

Our region provides versatile and high-quality facilities of international standards for training camps. Imatra and Lappeenranta hosted International Ice Hockey Federation's U18 World Championship 2014 and Imatra is a popular training camp destination for many ice hockey teams and other sports groups around the world, like Team Canada U20, SKA (Russia), Kunlun Redstar (China), Zenit (Russia), and Schalke (Germany).

The different training camps can be tailor-made including different supporting services, accommodation and catering as well as recreational or team building activities. Also coaching and training services can be offered to coaches as well as players.

### 1. ICE HOCKEY

- International level coaching according to Finnish Ice Hockey Association's training program
- Programmed and themed training schedule, tailored to suit your team
- 1-2 ice practice/ day and 1-2 off ice practice/ day
- Possibility to arrange games against local teams
- Workshops and education elements for coaches

#### Ice hockey training camp – example day

Daily theme - Skating

Morning session:

9.00-9.30 - Off ice warm up with balance & mobility theme

9.30-10.30 - Ice practice

10.30 - Off ice cooldown

12.00 - Lunch

14.00 - Coaches workshop/ nutrition lecture for players

Afternoon session:

15.00-15.45 - Off ice practice – plyometrics/ jumps

15.45-17.00 - Ice practice

17.00 - Off ice cooldown

19.00 - Lake Saimaa cruise and dinner

### 2. SKI/ BIATHLON TRAINING CAMPS

Training facilities meeting international competition standards.

- During summer: 3,3 km roller ski tracks, build to meet the international competition standards
- From October to spring: minimum 5 km ski tracks, build to meet the international competition standards
- Tracks have a unique automatic self-timing system (with 6 split points) giving real time data for coaches and athletes
- 30 lane biathlon stadium built in 2015
- Gym in Imatra Spa Arena

### 3. SCHOOL CAMPS

Our region also offers a unique setting for school camps. For school camp groups we are a safe and experiential destination where you can easily experience many different elements of Finland at its best. Imatra and Lappeenranta region offers at the same time unique Finnish nature at the shores of the great Lake Saimaa and River Vuoksi, history and culture all around the city, and great opportunities to practice Finnish sports at Ukonniemi Sport Resort area and the Rauha region on the other side of the lakeshore.

#### School camp – example day

9.00-10.00 - Workshop – Finnish nature

10.00-12.00 - Guided hiking to Lammasaari island with a nature trail quiz

12.00-13.00 - Lunch break – Buffet lunch

13.00-15.00 - Guided Imatra sightseeing & history tour

15.30-17.00 - Introduction to Finnish baseball

19.00 - Lake Saimaa Cruise and dinner







**Airport founded:** 1918

**Languages:** English

**Airlines:** Various charter airlines and private jets

**Distances to the airport:**

Lappeenranta 2 km

Imatra 30 km

Russian border 30 km

Mikkeli 108 km

Savonlinna 147 km

St. Petersburg 190 km

Helsinki 220 km

Joensuu 234 km

**Transfer solutions:** charter buses, taxi, train - 2 km to the Lappeenranta train station, easy access by car

**Transfer contact:** Taksi Saimaa Oy:  
+358 (0) 200 60 400

#### Contact

Lappeenranta Airport Ltd

Eija Joro

Lentokentäntie 21

53600 Lappeenranta

Tel. +358 (0) 40 502 2411

[eija.joro@lppairport.fi](mailto:eija.joro@lppairport.fi)

[info@lppairport.fi](mailto:info@lppairport.fi)

[www.lppairport.fi/en](http://www.lppairport.fi/en)

## LAPPEENRANTA AIRPORT

Lappeenranta Airport Ltd. is first privatized airport in Finland, owned by city of Lappeenranta. It's located two kilometers from Lappeenranta city center, in the heart of best Finnish Lakeland.

The airport is also located only 30 kilometers from the Russian border offering easy and convenient access to St. Petersburg area.

#### RESTAURANTS & CAFÉS

Restaurant Vanha Pilotti (Old Pilot) and Cafeteria BarFly

#### SERVICES AT THE AIRPORT

parking, free Wi-Fi, services for disabled persons (parking, toilets, easy access)

#### NEW FLIGHT CONNECTIONS

New scheduled flight connections are expected to start soon – please check flight connections from [www.lappeenranta.fi](http://www.lappeenranta.fi).





## ANGRY BIRDS INDOOR ACTIVITY PARK

The Angry Birds Activity Park - a 2400 m<sup>2</sup> indoor activity park for the whole family - is situated right next to Holiday Club Saimaa. The park is located in the first and second floor of the Shopping Center Capri, in Lappeenranta, near the Holiday Club Saimaa spa hotel and holiday resort. Suitable for children of all ages. Separate, more quiet area for toddlers. Park can also be rented privately outside opening hours. Popular with teams, company events etc.

### ACTIVITIES AT ANGRY BIRDS ACTIVITY PARK SAIMAA

- BagJump jumping mattress and tower
- Scooter area
- Incredible Lazer labyrinth
- Softball cannon shooting game
- Interactive ball game wall SUTU
- Game Lounge
- Hockey slap shot area
- Small children's area
- Playing structures
- Ranges for pedal cars and zip wire
- Angry Birds movie theater
- Birthday Room

### Prices:

price per person/ day

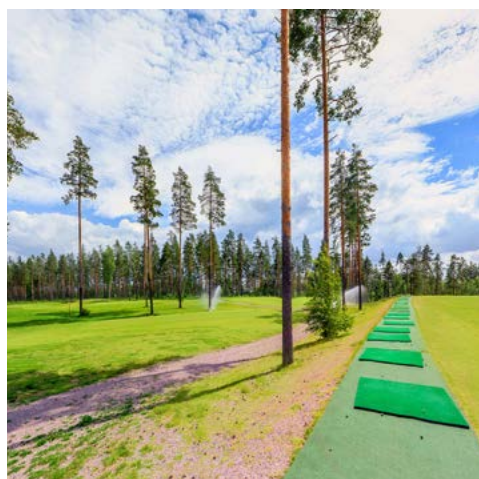
Note: Children under 4 years are free of charge.

**Opened:** 2011  
**Employees:** ~10  
**Languages:** English  
**Season:** year-round

### Contact

Holiday Club Resorts Oy  
 Angry Birds Activity Park Saimaa  
 Nina Fagerlund-Anttila  
 Rauhanrinne 1  
 55320 Rauha  
 Tel. +358 (0) 40 001 5580  
[nina.fagerlund-anttila@holidayclub.fi](mailto:nina.fagerlund-anttila@holidayclub.fi)  
[hotelsales.saimaa@holidayclub.fi](mailto:hotelsales.saimaa@holidayclub.fi)  
[www.holidayclubresorts.com/en/resorts/saimaa/angry-birds-activity-park](http://www.holidayclubresorts.com/en/resorts/saimaa/angry-birds-activity-park)





**Opened:** 2013

**Employees:** ~10

**Languages:** English

**Season:** May-October

Exact dates depending on weather conditions.

### Contact

Holiday Club Resorts Oy

Holiday Club Golf Saimaa

Nina Fagerlund-Anttila

Kohonkankaantie 11

55320 Rauha

Tel. +358 (0) 40 001 5580

[nina.fagerlund-anttila@holidayclub.fi](mailto:nina.fagerlund-anttila@holidayclub.fi)

[hotelsales.saimaa@holidayclub.fi](mailto:hotelsales.saimaa@holidayclub.fi)

[www.holidayclubresorts.com/en/resorts/saimaa/golf](http://www.holidayclubresorts.com/en/resorts/saimaa/golf)

## HOLIDAY CLUB GOLF SAIMAA

### AN EXTENSIVE PRACTICE CENTRE

The 18-hole golf course of Holiday Club Saimaa is designed to bring challenges and joy of succeeding to players of all levels.

Saimaa Golf will offer golfers and those interested in the sport an excellent setting for practice.

The practice centre contains:

- driving range with 60 bays
- 6-hole pitch and putt course
- four short game green

The landscape is ideal for a golf course and the surrounding nature astonishing. In addition to a full-length golf course, you can find a practice center in Saimaa, where everyone interested in golf is welcome, so in other words you do not need a green card or golf membership to practice court.

Kohonkangas heath spreading out next to Holiday Club Saimaa seems to have been created for a golf course. The rolling heather-clad heath combined with a dramatic landscape filled with kettle holes during the Ice Age, provides an impressive stage for the game.





## VIIPURIN GOLF

Viipurin Golf Club was founded already in 1938 and it has long and famous traditions. Viipurin Golf Club has in Lappeenranta two golf courses.

### ETELÄ-SAIMAA GOLF COURSE

Etelä-Saimaa golf course – where quality and beauty of the course meet pleasure to play!

In 2015 Golf course Etelä-Saimaa golf was ranked the second best golf course in Finland and the most beautiful golf course over the whole country (according to the Suomen Golflehti, published by Finnish Golf Union).

The 18-hole Etelä-Saimaa Golf Course is located approximately 15 minutes from the city center of Lappeenranta on the island of Tuosa and is characterized by its splendid Lake Saimaa views. In Etelä-Saimaa Golf Course, there are excellent practice range, target green with bunker, short game practice facilities, putting practice greens, clubhouse with high-level restaurant, dressing rooms with lockers and sauna, parking areas and pro shop offering the latest fashion in golf apparel. Fluently English speaking professi-

onal golf instructor provides golf lessons and green card courses. Clubhouse is open daily from 08:00 to 22:00 h.

### KAHILANNIEMI GOLF COURSE

In Kahilanniemi there is 9-hole golf course, which is situated only approximately 2 km from city center of Lappeenranta. This 9-hole course stretches along Lake Saimaa, and is one of the best park courses in Finland. Kahilanniemi Golf Course has driving range with covered bays and grass tees, short-game facilities for putting, chipping, pitching and bunker shots, parking area, cafeteria and pro-shop. In Kahilanniemi Golf Course fluently English speaking professional golf instructor also provides golf lessons and green card courses.

**Founded:** 1938  
**Employees:** 20  
**Languages:** English  
**Season:** 01.05. - 30.09.2018

### Contact

Viipurin Golf  
 Kari Kalin  
 Vehkataipaleentie 589  
 53300 Lappeenranta  
 Tel. +358 (0) 40 540 1200  
[kari.kalin@viipuringolf.fi](mailto:kari.kalin@viipuringolf.fi)  
[info@viipuringolf.fi](mailto:info@viipuringolf.fi)  
[www.viipuringolf.fi](http://www.viipuringolf.fi)  
[facebook.com/viipuringolf](https://facebook.com/viipuringolf)





**Languages:** English

**Season:** From the end of May till the beginning of September, exact dates for scheduled cruises are decided later. From request we do private cruises always when the lake is not frozen.

#### Contact

Karelia Lines Oy  
Matkustajasatama  
53100 Lappeenranta  
Tel. +358 (0) 5 453 0380  
[sales@karelielines.fi](mailto:sales@karelielines.fi)  
[www.karelielines.fi/en](http://www.karelielines.fi/en)  
[facebook.com/ms-Camilla-122362211107996](https://facebook.com/ms-Camilla-122362211107996)

## KARELIA LINES

Karelia Lines is a wide-ranging company acting in the Lappeenranta Harbour.

#### CRUISE SHIP M/S CAMILLA

We operate the largest ship in the inland waterways of Finland, m/s Camilla. Our cruises sail in the Saimaa Canal and around the picturesque archipelago of the lake Saimaa. An à la Carte restaurant and bars serve on board and sunny deck is perfect for warm summer days. We also make private cruises according to your wishes with special menus and routes.

#### TERRACE SHIP S/S SUVI-SAIMAA

The best place to enjoy the Lappeenranta Harbour is our terrace ship s/s Suvi-Saimaa. Sunny terrace and wide selection of drinks and snacks ensure good times.

#### RESTAURANT TULLI PIZZA

Delicious pizzas and salads are served in our restaurant TulliPizza, also located in the Lappeenranta Harbour. No matter the weather, decked terrace and warm ambience make sure that the mind is as happy as the tummy!

#### CRUISE TO LAKE SAIMAA AND SAIMAA CANAL

Two or three hour cruise in the Saimaa Canal, where visitors get to see the beautiful Saimaa archipelago and the Saimaa Canal. Our cruises go through the first lock back and forth, staying all the time in Finnish waters. Possibility to arrange private cruises as well.

**Season:** mid-May till mid-September

**Duration:** 2 or 3 hours, private cruises according to clients wishes

**Languages:** English

**Participants/ Capacity:** 1-350 pers.

**Starting place:** Lappeenranta Harbour

**Starting time:** Mon-Sat at 12 am and 6 pm, in July also on Saturdays at 3 pm and on Sundays at 2 pm.

**Optional services:** À la carte restaurant on board

**Provider:** Karelia Lines

#### Prices:

Rates and commission on request.  
price per adult

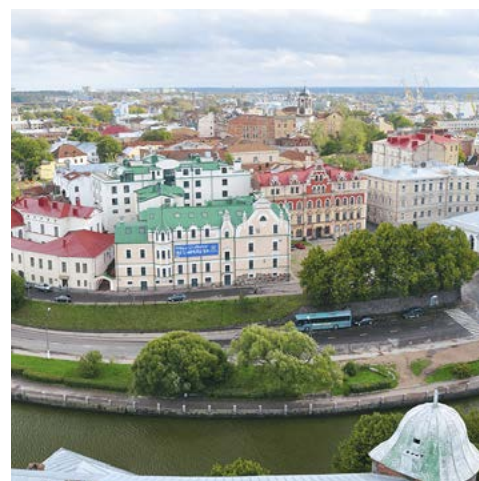
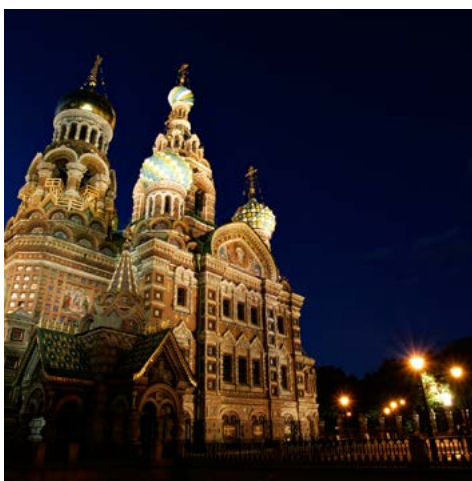
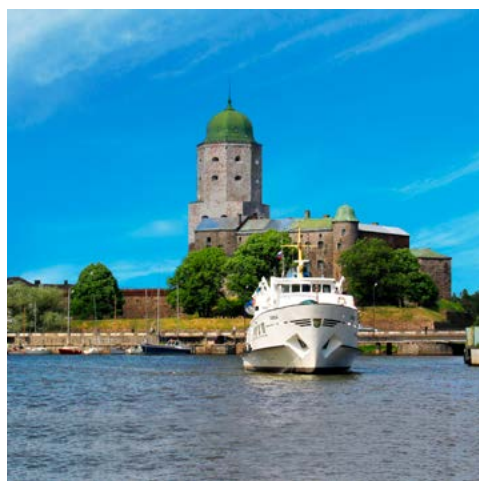
price per pensioner or student

price per child (4-14 yrs old)

price per family (2 adults and 2 children)

Note: For groups every 16th ticket is free (requires joint payment).





## SAIMAA TRAVEL - CRUISES TO RUSSIA

Saimaa Travel Oy is a tour operator specialized in tours to Russia. Our main products are visa-free cruises from Lake Saimaa via the Saimaa Canal to Vyborg and St. Petersburg. We offer also package and individual tours and visas to Russia. Our tailor made tours are suitable for both individual and group passengers. We operate also as an incoming operator providing all attractions in the Lake Saimaa area.

### VISA-FREE CRUISES TO VYBORG

The cruise along the historic Saimaa Canal from Lappeenranta to Vyborg on M/S Carelia is an experience itself. On board you can relax, enjoy the beautiful scenery and experience the locks. The height difference between the water levels of Lake Saimaa and the Gulf of Finland is 76 meters! Excellent cuisine from our buffet table tops off your cruise. Our crew looks after you and arranges activities and entertainment during the cruise.

In Vyborg you can visit tourist attractions, stop for a cup of coffee in numerous cafes or visit interesting small shops. The traditional souvenirs from Vyborg are linen, crystal and matryoshka dolls. The Market Hall offers a lively atmosphere and the possibility to shop everything from groceries to clothes, linen and souvenirs. In department stores and small boutiques you can find everything from the latest fashion to vintage. The variety of restaurants and cafes is wide and you can enjoy delicious food at

reasonable prices. The town library designed by world-famous Finnish architect Alvar Aalto is worth visiting as is the Hermitage Vyborg Museum.

### VISA-FREE 3-DAY TOUR TO ST. PETERSBURG

During the 3-day tour to St. Petersburg you first cruise to Vyborg and continue by a charter bus to St. Petersburg. The evening riverboat cruise takes you to the famous Neva River and its numerous canals. On the second day, you have a chance to visit the Hermitage Museum and other unique sights during a full day in the city. On the third day you travel back to Vyborg by bus, and step to M/S Carelia to cruise back to Finland.

Our cruises to Russia by M/S Carelia from Lappeenranta are visa-free for citizens of all countries. Gather your family and friends together and book a cruise to Russia!

### Prices:

Rates on request.

**Founded:** 1996

**Employees:** 10-20

**Languages:** English, German

**Season:** Visa-free cruises with M/S Carelia between May and September 2018

**Starting point for all cruises:** The cruises depart from Lappeenranta harbour.

**Types of activities offered:** cross-country skiing, snowshoe walking, Christmas/ New Year packages, canoeing/ kayaking, cruise, biking, nordic walking

### Contact

Saimaa Travel Oy Ltd

Kirsti Laine

Ratakatu 23

53100 Lappeenranta

Tel. +358 (0) 5 5410 100

[kirsti.laine@saimaatravel.fi](mailto:kirsti.laine@saimaatravel.fi)

[saimaatravel@saimaatravel.fi](mailto:saimaatravel@saimaatravel.fi)

[www.saimaatravel.fi/en](http://www.saimaatravel.fi/en)

[facebook.com/Saimaa-Travel-Oy-302359108958](https://facebook.com/Saimaa-Travel-Oy-302359108958)

[instagram.com/saimaatravel/](https://instagram.com/saimaatravel/)





### Saimaan palju ja aktiviteetti

Experience Finnish nature or have an active holiday!

We strive to deliver the best authentic Finnish experience with our relaxing nature treks. Good example of this is our berry picking trek where we dive in to Finnish forest and pick the vitamin rich berries. Afterward we prepare delicious snack where we use the berries we just picket. Berry picking trek is one of the products we offer under "pick and eat" category.

**Founded:** 2015

**Employees:** 1

**Languages:** English

**Season:** year-round

**Week program:** available

**Types of activities offered:** snowshoe walking, fishing, hiking/ trekking, canoeing/ kayaking, nordic walking

### Contact

Saimaan palju ja aktiviteetti

Teemu Virtanen

Haikosentie 4

Savitaipale

Tel. +358 (0) 40 588 0738

[teemu@saimaanpalju.fi](mailto:teemu@saimaanpalju.fi)

<http://saimaanpalju.fi/frontpage.html>

[facebook.com/saimaanpalju](https://facebook.com/saimaanpalju)

[twitter.com/saimaanpalju](https://twitter.com/saimaanpalju)

[instagram.com/saimaanpalju](https://instagram.com/saimaanpalju)

## SAIMAAN PALJU JA AKTIVITEETTI

### CHANTERELLE PICKING WITH A GUIDE

Welcome to chanterelle picking! Finnish forests are full of tasteful mushrooms. Chanterelle is one of the most famous mushrooms that can be found in Finnish forest. Most of Finns have been mushroom picking in their life time. No wonder, because chanterelle soup from freshly picked mushrooms is simply delicious.

During this trip we will only concentrate to chanterelles. They can be easily recognized even with no experience with mushrooms. With the "everyman's right" mushroom picking is easy because you don't need any permissions from land owners. Because of this, mushroom picking is very common hobby in Finland. The best places to pick are closely guarded secrets and revealed to no one. Unlike berries, chanterelles are more scarce and finding them might be difficult.

**Season:** 23.07. - 07.10.2018

**Duration:** 2,5 h

**Languages:** English

**Participants:** 10-20 pers.

**Services included:** pick-up where requested, mushroom picking knife and basket, chanterelle soup from the mushroom we picked (If we cannot find any the guide has fresh chanterelles in hand), juice, tea and coffee

**Starting place:** Bus pick-up from Lappeenranta where requested

**Starting time:** as requested

**Provider:** Saimaan palju ja aktiviteetti

**Prices:** Rate and commission on request. price per person

### ICE FISHING WITH A GUIDE

During this guided Ice fishing activity you can experience calmness of the Finnish lake and maybe even catch fish! The guide will explain the basic tricks of wintertime fishing. After the fishing we will enjoy delicious snack prepared on open fire. If we were lucky enough to catch fish we are going to prepare the catch also. Ice fishing trips are arranged at Kuolimo, Savitaipale.

**Season:** 01.01. - 18.03.2018

**Duration:** 2 h

**Languages:** English

**Participants:** 10-25 pers.

**Services included:** Winter overall, gloves, hat, kick sledge for moving on ice, safety equipment, ice drill, fish rod, bait, stool for sitting and professional guide service; warm drink (coffee, tea, juice), snack (sausage on open fire/ bread), fish if we catch any.

**Optional service:** Transfer can be arranged from Lappeenranta with cost of 200 €.

**Starting place:** Olkkolantie 2, Savitaipale

**Starting time:** as requested by the group

**Provider:** Saimaan palju ja aktiviteetti

**Prices:** Rate and commission on request. price per person





### ICE FISHING WITH NETS

During this guided Ice fishing activity you can experience fishing with nets. With 60 meters of net the catch is almost certain. But like everyone knows, there are no guarantees in fishing. If we are lucky enough to catch a fish or two, we are going to enjoy it with a small snack. During the activity guide will tell you the basics of wintertime fishing. The activity can be arranged in lake Kuolimo, Savitaipale.

**Season:** 01.01. - 18.03.2018

**Duration:** 2,5 h

**Languages:** English

**Participants:** 10-25 pers.

**Services included:** Winter overall, gloves, hat, kick sledge for moving on ice, safety equipment and professional guide service; warm drink (coffee, tea, juice), snack (sausage on open fire/ bread), smoked fish if we catch one.

**Optional service:** Transfer can be arranged from Lappeenranta with cost of 200 €.

**Starting place:** Olkkolantie 2, Savitaipale

**Starting time:** as requested by the group

**Provider:** Saimaan palju ja aktiviteetti

**Prices:** Rate and commission on request. price per person

### OPEN FIRE MENU

Our open fire menu is designed to complement our nature activities. Menu fits perfectly to our nature activities, but can also be a separate event if wished. Because all the servings are prepared on a wood burning open fire, the



only requirement is a safe fire pit.

Our menu consists of traditional Finnish dishes, but also offers newer dishes. Our policy is to use local ingredients always when possible. For example the mushrooms are picked by our self from the nearby forests.

**Season:** late June to September

**Duration:** 1,5-2 h

**Languages:** English

**Participants:** 10-16 pers.

**Services included:** Selected three course serving from the menu.

**Optional service:** Private bus transport to the forest and back.

**Starting place:** Bus pick-up from Lappeenranta where requested

**Starting time:** as requested by the group

**Provider:** Saimaan palju ja aktiviteetti

**Prices:** Rate and commission on request. price per person

### NIGHT IN NATURE

Experience Finnish nature at its best, silent, clean and beautiful. During the activity we will prepare traditional Finnish foods at open fire, experience nature with skilled nature guide and July to August you get the chance to pick berries from the forest. At dinner time we will prepare dessert from the berries we picked during the day.

There are two different options for you. In the first option you have the chance to trek in Finnish nature. Trekking distance is about 5km.



The trek includes one steep ascent. Because of this the route is considered difficult, but the climb is worth the effort. From the hill top you have a beautiful view. You are provided a quality backpack, sleeping bag and tent with necessary accessories. Nature guide is with you during the whole trip offering guidance. Guide will also prepare the meals during the trip.

If you would like to have only the experience of sleeping in the nature we can arrange that experience also. In this option everything is ready made for you. The tents are pitched and the trek to the tent site is less than 500 meters.

**Season:** June to September

**Duration:** from 13:00 - next day 10:30 h (trekking option)/ from 17:30 - next day 10:30 h (night in nature only)

**Languages:** English

**Participants:** 6-10 pers.

**Services included:** Tent, sleeping bag, backpack, one snack, dinner, evening snack, breakfast and guide service.

**Optional service:** Private bus transport to the forest and back

**Starting place:** Bus pick-up from Lappeenranta where requested

**Starting time:** as requested by the group

**Provider:** Saimaan palju ja aktiviteetti

**Prices:** Rate and commission on request. price per person





### Saimaa Adventures

We offer different kind of safaris from 1 hour trips to several days safaris on the Russian side. Saimaa Adventures has the largest capacity of ATVs in the region, also new Arctic Cat 550 tractor ATVs available.

**Founded:** 2008

**Employees:** 5

**Languages:** English

**Season:** year-round

**Week program:** weekly schedule for all winter and summer activities.

**Types of activities offered:** ATV safaris (since 2017 also to Russia), Pearl of Hos-sukka - stylish sauna for groups and experience oasis, RIB boat safaris, floating in ice with dry suits, fishing trips, excursion to Lapland village and reindeer rides, nordic tour skating, snowshoe trips, rental equipment: bicycles, boats, jet skis, fishing equipment and winter time cross country ski's, nordic tour skates, snowshoes

### Contact

Saimaa Adventures Oy  
Ville Harinen  
Vipelentie 11, 55320 Rauha  
Tel. +358 (0) 40 742 7516  
[ville.harinen@saimaa-adventures.fi](mailto:ville.harinen@saimaa-adventures.fi)  
[info@saimaa-adventures.fi](mailto:info@saimaa-adventures.fi)  
[www.saimaa-adventures.fi](http://www.saimaa-adventures.fi)  
[facebook.com/saimaa-adventures](https://facebook.com/saimaa-adventures)  
[twitter.com/saimaa\\_adv1](https://twitter.com/saimaa_adv1)  
[instagram.com/saimaa\\_adventures](https://instagram.com/saimaa_adventures)  
[youtube.com/user/saimaaadventures](https://youtube.com/user/saimaaadventures)

## SAIMAA ADVENTURES

### ATV SAFARI

This exciting ATV safari takes you through breathtaking terrain and views along the roads of Lake Saimaa. This short safari is suitable for the whole family.

**Season:** year-round

**Duration:** 1 h

**Languages:** English

**Participants:** max. 7 driver + 7 passengers

**Minimum age:** 18 years for driver (no age limit for passengers)

**Services included:** guided safari, all needed equipment/ gear

**Optional:** longer safaris available also, with lunch breaks etc.

**Starting place:** Saimaa Adventures' office in Rauha/ Lappeenranta

**Starting time:** on order

**Provider:** Saimaa Adventures

**Price:** Rates and commission on request.

price per driver

price per passenger

### RIB SPEED BOAT SAFARI TO SAIMAA ISLANDS

Speed boat safari to Saimaa islands where we enjoy campfire coffee. There are berries to collect and perhaps even mushrooms. The boat can reach top speed of approx. 50 knots. Clothing suitable for weather condition is included. Those who dare, can also take a dip in Lake Saimaa to swim and enjoy the saunas.

**Season:** 10.05. - 30.10.

**Duration:** 2-3 h

**Languages:** English

**Participants:** 4-12 pers.

**Services included:** all needed equipment, light snacks and coffee or tea

**Optional services:** sauna, floating with dry suits

**Starting place:** harbour of Holiday Club Saimaa or Imatra marina

**Starting time:** on order (weekly program also on some days at 12:00 h)

**Provider:** Saimaa Adventures

**Price:** Rates and commission on request.

price per person

price per person - sauna

price per person - floating with dry suits

### FLOATING IN GREAT LAKE SAIMAA

Experience floating in icy water safely in dry suits. These special suits will keep you warm and dry even in extreme conditions and sub zero temps. In wintertime even the transfer to floating place is an adventure.

**Season:** year-round

**Duration:** 1-1,5 h

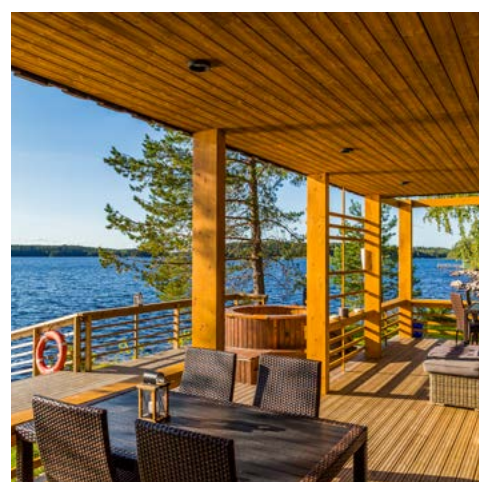
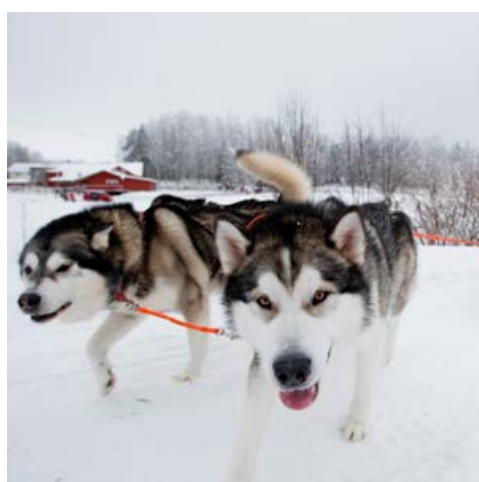
**Languages:** English

**Participants:** 4-10 pers.

**Minimum height:** min. height 140 cm

**Services included:** guiding, needed suits and in winter time transfer with snowmobile sleds.





**Optional services:** sauna and meal is possible to combine

**Starting place:** Saimaa Adventures' office in Rauha/ Lappeenranta

**Starting time:** on order

**Provider:** Saimaa Adventures

**Price:** Rate and commission on request. price per person

#### HUSKY SAFARI

A husky safari is also available in the lake Saimaa area. Saimaa Adventures' dog sled package is suitable for groups up to 15 persons with a duration of about 5 hours.

The group travels from Holiday Club Saimaa in the Rauha region of Lappeenranta to the dog farm, which is located a 1 hour drive away from the hotel. The duration of the actual dog sled safari is about 2,5 km including a coffee break with a salty snack. After returning to the starting point of the dog sled ride a transfer back to the hotel will take place.

**Season:** 15.01.-15.03. (depending on the weather conditions)

**Duration:** 5 h in total (2,5 km dog sled ride)

**Languages:** English

**Participants:** max. 15 pers.

**Services included:** transfer to the husky farm and back to Holiday Club Saimaa, guided safari, coffee, snacks, suitable clothes if necessary

**Optional services:** Sauna, meals, floating, tour skating

**Starting place:** Holiday Club Saimaa, Rauha region of Lappeenranta, 35 km from the Lap-

peenranta city center. Also other departures points are possible

**Starting time:** on order

**Provider:** Saimaa Adventures

**Price:** Rates and commission on request. price + price per person, including transfers by minibus

#### NORDIC TOUR SKATING ON NATURAL ICE

Experience the thrill of this novel form of skating on the natural ice of Lake Saimaa. An instructor will first show you the secrets of the sport, and then you are free to go on your own skating tour. At the end of each track is a resting place.

**Season:** winter season when the lake is frozen

**Duration:** 1-3 h

**Languages:** English

**Services included:** skates, helmet, sticks

**Participants:** no min., but max. 50 persons

**Starting place:** Saimaa Adventures' office in Rauha/ Lappeenranta

**Starting time:** on order, included in the weekly calendar (weather permitted)

**Provider:** Saimaa Adventures

**Price:** Rates and commission on request.

price per adult

price per child

#### PEARL OF HOSSUKKA

Experience our oasis "Pearl Of Hossukka". Have a nice time with friends in "Saimaa style": Swimming in the lake, hot-tub in the porch and perhaps some great food that suits the traditional atmosphere. There is enough space even for bigger groups.

Special tip! You can even end your safari or fishing trip directly here.

**Season:** year-round

**Duration:** 2-24 h

**Languages:** English

**Participants:** 1-30 pers.

**Services included:** sauna hot tub, towels

**Optional services:** meals and different activities

**Location:** 5 km from Saimaa Adventures' office and Holiday Club Saimaa

**Starting time:** upon consultation

**Provider:** Saimaa Adventures

**Price:** Rates and commission on request.





### Kulttuuripalvelu Kaiku Ky/ Cultural Services Kaiku

Cultural Services Kaiku is a family-owned business from South Karelia, which has produced a wide range of customer-oriented, high-quality events, programs, nature adventures and trips as well as cultural services for different needs and events since 2000. In our program and event products we present, among other things, our rich Finnish culture, our sometimes even wild history, our incredibly beautiful nature and our mythology, which has already fallen a bit into oblivion. We combine them creatively by, for example, implementing them as different program event packages in the middle of the forest.

**Founded:** 1999

**Employees:** 2

**Languages:** English

**Season:** year-round

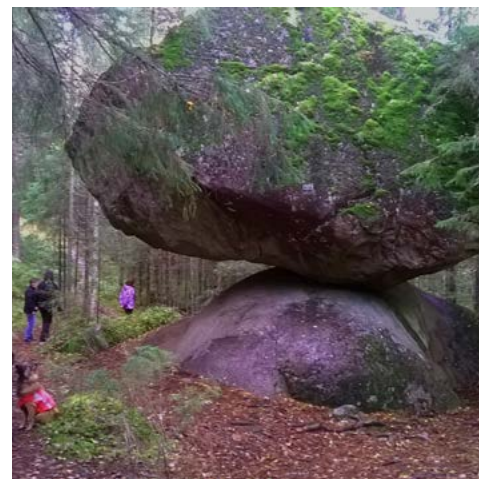
**Week program:** available

**Types of activities offered:** Christmas/ New Year packages, animal/ bird watching, fishing, hiking/ trekking

**Transfer options:** Bus transportation from both Lappeenranta airport (50 km) and Imatra train station (20 km) can be arranged if ordered beforehand.

### Contact

Kulttuuripalvelu Kaiku Ky/  
Cultural Services Kaiku  
Virve Niiranen  
Pohjalankilantie 579  
56210 Virtutjoki  
Tel. +358 (0) 50 590 1583  
[toimisto@kulttuuripalvelukaiku.fi](mailto:toimisto@kulttuuripalvelukaiku.fi)  
[www.kulttuuripalvelukaiku.fi](http://www.kulttuuripalvelukaiku.fi)  
[facebook.com/Kulttuuripalvelu-Kai-ku-Ky-116895394995576](https://facebook.com/Kulttuuripalvelu-Kai-ku-Ky-116895394995576)



## CULTURAL SERVICES KAIKU

### NATURE STORIES - TRADITIONAL ANGLING OR FOREST TOUR

Nature Stories include both traditional forest hikes, nature and wildlife observation, nature adventures together with forest elves for families as well as the presentation of forest-related mythology, traditions and history. The excursions are organized on request and the contents can be designed under different themes based on the client's requirements. We run excursions out into the forests and lake landscapes of South Karelia. Place of departure and destination are determined by the client's wishes and content requirements.

During the traditional angling or forest tour we can calm down in the beautiful forest environment and just enjoy of the peace of Finnish nature. We also explore some of the specialties of the nature together with you as well as tell you stories about the nature and have also fun with some old games you can play in the forest! In the wintertime we can go ice fishing and play different kinds of winter games!

**Season:** 01.01. - 31.12.

**Duration:** 1,5-2 h

**Languages:** English

**Participants:** 1-15 pers.

**Minimum age:** 10 years

**Services included:** game equipment, when needed, little/ light packed lunch (incl. e.g. coffee/ tee/ juice, biscuits and little sandwiches)

**Optional service:** If needed we can arrange overnights, full meals (for example traditional meals), transportation etc. with our partners! (note: the price in our website does not include any meals or other optional services)

**Starting place:** Starting place can be settled with the customer.

**Starting time:** Starting time can be settled with the customer.

**Provider:** Cultural Services Kaiku

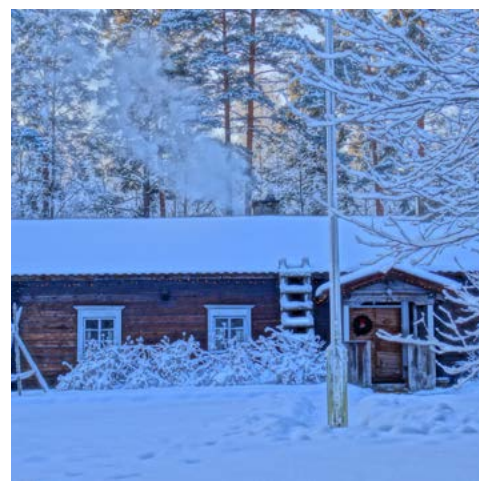
**Prices:** Rate and commission on request. price per group

### NATURE STORIES - TAPIO TOUR

Nature stories include both traditional forest hikes, nature and wildlife observation, nature adventures together with forest elves for families as well as the presentation of forest-related mythology, traditions and history. The excursions are organized on request and the contents can be designed under different themes based on the client's requirements. We run excursions out into the forests and lake landscapes of South Karelia. Place of departure and destination are determined by the client's wishes and content requirements.

"Tapio Tour" presents tales and mythology of the forest. The guides are dressed traditionally. During the tour you can get to know our forefathers' beliefs and habits and why we Finns have a special relationship with the nature.





**Season:** 01.05. - 15.10.

**Duration:** 1,5-2 h

**Languages:** English

**Participants:** 10-50 pers.

**Minimum age:** 10 years

**Services included:** "Capes" for the customers (traditionally clothing), game equipment if needed, little traditional "tastes", for example biscuits made with an old recipe with herbal tea

**Optional service:** If needed we can arrange overnights, full meals (for example traditional meals), transportation etc. with our partners! (note: the price in our website does not include any meals or other optional services)

**Starting place:** Starting place can be settled with the customer.

**Starting time:** Starting time can be settled with the customer.

**Provider:** Cultural Services Kaiku

**Prices:** Rate and commission on request. price per group

### GUIDED TOURS ON THE CULTURAL SITES OF SOUTH KARELIA

You can get more out of the sites on a guided tour! For example, the renowned Ruokolahti Church Hill, the place called the most beautiful place in South Karelia, can be explored together with the missus and hubby of Ruokolahti. On the Church Hill, you can see the painting landscapes of Albert Edelfelt and plenty of other interesting things, e.g. the largest air combat scenery of the Winter War, the local history museum and the outdoor museum area, in whose main building (Ruokolahti house) Summer Café Kaiku is located. We organize guided and dramatic tours – if necessary, also to other destinations! There is, for example, the Salpa Line; you can still see parts of the fortifications, a defence line built in the 1940s to protect the eastern border of Finland. The Kutvele, Käyhkää and Kukonharju canals are scenic sights of special historic interest. The canals were built at the end of the 18th century by Russian soldiers under the supervision of Count Aleksandr Vasilyevich Suvorov (1730-1800). In addition to missus and hubby, the forest elves Varpu and Naava can serve as guides, too, for example for groups of children or families.

**Season:** 01.01. - 31.12.

**Duration:** 1-3 h

**Languages:** English

**Participants:** 1-50 pers.

**Minimum age:** 10 years

**Services included:** the services of the guide/ guides (1-2 guides, depending the available time)

**Optional service:** If needed we can arrange overnights, full meals (for example traditional meals), transportation etc. with our partners! (note: the price in our website does not include any meals or other optional services)

**Starting place:** Starting place is the Ruokolahti church hill.

**Starting time:** Starting time can be settled with the customer.

**Provider:** Cultural Services Kaiku

**Prices:** Rate and commission on request. price per group





### Vuoksen Lautturi

Fishing Park and camping site middle of town in Imatra, Small paradise where you can eat well and fresh fish, camping, cruising in river Vuoksi. We also organize some events like motorboat or jet ski races.

**Employees:** 4+5

**Languages:** English

**Season:** 01.05. - 30.09., 01.12. - 24.12.

**Types of activities offered:** fishing, animal/ bird-watching, horseback riding, cruise, biking, Christmas/ New Year packages

**Transfer options:** Transfer for small groups possible on request.

### Contact

Vuoksen Lautturi Oy

Toni Kainulainen

Kotipolku 4

55120 Imatra

Tel. +358 (0) 40 556 0121

[vuoksi.kalastuspuisto@co.inet.fi](mailto:vuoksi.kalastuspuisto@co.inet.fi)

[www.vuoksenkalastuspuisto.fi](http://www.vuoksenkalastuspuisto.fi)

[facebook.com/Vuoksen-Kalastuspuisto-207806929248066](https://facebook.com/Vuoksen-Kalastuspuisto-207806929248066)

## VUOKSEN LAUTTURI

### FISHING PACKAGES AT RIVER VUOKSI

**Individual rowing/ fishing trip at river Vuoksi**

**Duration:** 1 day

**Services included:** fishing license, equipment

**Price:** Rate and commission on request.  
price per person

**Rowing/ fishing trip with rower/ guide**

**Duration:** 1 day

**Services included:** equipment

**Price:** Rate and commission on request.  
price per pers. + price per day - fishing license

**Guided spin fishing trip at river Vuoksi**

**Services included:** equipment, guide, boat

**Price:** Rate and commission on request.  
price per pers. + price per day - fishing license

**Guided ice fishing trip at Vuoksi or Saimaa**

**Duration:** 1 h

**Services included:** guide and transfer (max. 25 km from Imatra)

**Note:** On request, also to locations further away.

**Price:** Rate and commission on request.  
price per hour

### FISHING PACKAGES AT LAKE SAIMAA

**Guided trolling tour with a motor boat**

**Duration:** 5-7 h

**Participants:** 1-3 pers.

**Services included:** boat, guide, equipment, transfer, snack and fishing license

**Price:** Rate and commission on request.  
price per person

**Fishing with a rubber bait**

**Duration:** 4-6 h

**Participants:** 1-3 pers.

**Services included:** boat, guide, equipment, transfer, snack and fishing license

**Price:** Rate and commission on request.  
price per person

**Boats:** Silver Shark 580 - 100 PS Mercury motor and Suvi 480 - 50 PS Yamaha motor

**Note:** Fishing packages for larger groups on request.

### ACCOMMODATION

It is possible to stay at Fishing Park Vuoksi,

**Price:** price per day (rates and commission available on request.)





© Nestori Lönngren



© Nestori Lönngren



© Nestori Lönngren



© Saunalautta-Imatra

## SAUNALAUTTA-IMATRA - FLOATING SAUNA

### SAUNA CRUISES

We arrange sauna cruises or order throughout the year. On our full-service sauna cruises, you can concentrate on relaxing as our staff takes care of everything else. Our raft is equipped with a studio-level Genelec sound system and a video projector. Our fridge holds your drinks cold even in the summer heat, and the freezer provides ice to make them even colder. There are two flush toilets on the raft. We don't serve alcoholic beverages on the sauna raft, but you may bring your own drinks with you.

### ACTIVITIES AND CATERING

Additional water activities are provided by Water-SkiZoo, e.g. floating. It is a perfect complement to the sauna cruise. Also different types of meals and snacks can be offered on board the floating sauna.

### LOCATION

The home port of the sauna raft is in the Vuoksi Fishing Park on the Varpasaari island near the city centre of Imatra.

### SAUNA

Our 15-m<sup>2</sup> sauna is spacious enough for a larger group at once, and while sitting in the sauna, you're able to admire the beautiful landscape through the windows. The large wood-burning sauna stove by Misa guarantees an excellent sauna-bathing experience for both hard core sauna enthusiasts and those who enjoy more moderate heat. Biodegradable body washes are included in the price of the cruise.

### Prices:

Rates on request; commission upon agreement.

Cruise prices, Mon–Thu:

price for 2 h

price for 3 h

price for 4 h

Cruise prices, Fri–Sun:

price for 2 h

price for 3 h

price for 4 h

price per hour for additional hours

**Opened:** 2016

**Employees:** 1

**Languages:** English

**Season:** year-round

**Types of activities offered:** sauna cruises, sauna, floating and other water activities such as parasailing

### Contact

Saunalautta-Imatra Oy

Jussi Honka

Kotipolku 4, Varpasaari

55120 Imatra

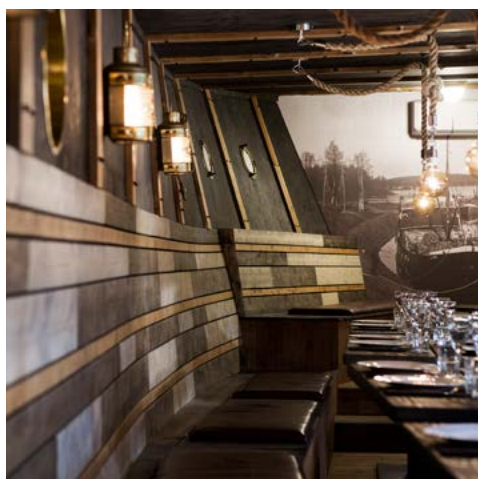
Tel. +358 (0) 40 586 5313

[info@saunalautta.fi](mailto:info@saunalautta.fi)

[www.saunalauttaimatra.fi](http://www.saunalauttaimatra.fi)

[facebook.com/saunalauttaimatra](https://facebook.com/saunalauttaimatra)





**Founded:** 1979  
**Employees:** 20 (during summer season)  
**Languages:** English  
**Season:** 20.4. - 20.9.2018  
**Opening hours:** 10:00-02:00 h

#### Contact

Armpa Oy/  
 Boat Restaurant Prinsessa Armaada  
 Juha Nalli  
 Tel. +358 (0) 50 359 0921  
[armaada@prinsessaarmaada.fi](mailto:armaada@prinsessaarmaada.fi)  
[prinsessaarmaada.fi/en](http://prinsessaarmaada.fi/en)  
 Reservations and inquiries:  
 Prinsessa Armaada  
 Satamatori 10, 53900 Lappeenranta  
 Tel. +358 (0) 44 754 5504  
 Office: Armpa Oy  
 Apollonkatu 4, 53850 Lappeenranta  
 Tel. +358 (0) 50 359 0921  
[facebook.com/Laivaravintola-Prinsessa-Armaada-114067995334842](https://facebook.com/Laivaravintola-Prinsessa-Armaada-114067995334842)

## BOAT RESTAURANT PRINSESSA ARMAADA

Prinsessa Armaada is a popular meeting place located in Lappeenranta harbour, adjacent to the Lappeenranta Fortress. Enjoy good food and the summery glimmer of Lake Saimaa in these idyllic and historic surroundings. Above all come to freshen up in a good company!

Floor below Prinsessa Armaada offers you a dining-room rich in atmosphere. Cargo hold restaurant is open always when terrace is open.

#### RESTAURANT SERVICES

Tasty meals and refreshing drinks are offered at the terrace.

The indoor Cargo Hold Restaurant is a dining restaurant rich in atmosphere.

#### SPECIALTIES

butter fried vendace, traditional and delicious fish dish straight from Lake Saimaa

#### PANORAMIC SAUNA

We also offer to your use a cozy sauna-department for twelve persons. Panoramic sauna is located in the upper deck. If you want to take a sauna in the center of Lappeenranta's summer please call us or come visit us to the harbor.

#### Prices:

Menu and sauna rental rates are available on our website [www.prinsessaarmaada.fi](http://www.prinsessaarmaada.fi)

Sauna: Rates and commission on request. price for the first two hours





## SÄRÄPIRTTI KIPPURASARVI

### SÄRÄ - ONE OF FINLAND'S SEVEN WONDERS

Prepared from a thousand-year-old recipe, this traditional lamb roast is delicious beyond compare! In line with local custom, Särä should be savored slowly - there are no limits on portions, so feel free to eat your fill!

### HISTORY OF SÄRÄPIRTTI KIPPURASARVI

The Finnish Tourism Association, the Finnish Local Heritage Federation, and Finnair held a competition in 1972 to discover new tourist attractions. The name of the competition was The Seven Wonders of Finland and its Provinces. Särä, from the Lemi region, is the only food that made it onto the list, which was compiled from among 700 entries.

### SÄRÄ FROM LEMI

The oldest dish in Finland, särä dates back a thousand years.

Originally, särä was an ancient method of preserving meat for the winter. When the autumn came, villagers slaughtered the jointly owned sheep, after which the meat was salted and cooked in birch troughs in wood-fired ovens. Some of the särä was eaten straight from the troughs after cooking, but most of it was stored in sheds over the winter. The dried meat was taken from the sheds as needed and used in soups, on bread, and in other cooking. Särä became a traditional dish in the 19th century

when the potato established its place as a side dish served with lamb. In the olden days, särä was most commonly eaten with turnip.

Särä is made from roast lamb, potatoes, and salt. Preparing särä takes at least nine hours, including heating of the baking oven.

The dish is named after the birch trough in which it is cooked. The trough is carved from an uncut birch log. When in the oven, fresh pieces of alder are placed underneath the trough. This smoke slightly during cooking, giving the roast a unique taste and a pleasing color.

### RESTAURANT & ONLINE STORE

Lea and Tauno Hietaranta extended their selection of bakery products with särä in 1978. At the time, the couple ran their business in an old-school building in which they also lived. Following completion of their new premises a decade later and with the change of generation, Kippurasarvi became established as the best-known restaurant in the region.

Every year, the company uses roughly a hundred cubic meters of birch logs for heating the baking oven, 30 000 kg of lamb, thousands of kilos of potatoes, and plenty of salt.

Our slogan (Särä from Lemi - one of the seven wonders of Finland), logo, recipe, and products are all copyright-protected.

**Prices:** Price list with rates for group packages available on request.

**Founded:** 1978

**Employees:** 6

**Languages:** English

**Season:** year-round

**Opening Hours:** Please check website.

**Capacity:** In total 158 seats inside and 90 outside (terrace at summer).

The capacity depends on the premise chosen: Säräsali: 66 persons, rear room: 50 persons, dining room: 32 persons, glazed terrace: 10 persons.

**Type of restaurant:** Finnish

**Service:** Only restaurant in Finland serving only one dish, Lemin Särä.

**Specialties:** Lemin Särä

**Note:** dogs are allowed; parking places available

**Online Store:** The Säräpirtti online store opened in May 2010.

### Contact

Säräpirtti Kippurasarvi

Esko Hietaranta

Rantatie 1

54710 Lemi

Tel. +358 (0) 5 414 6470

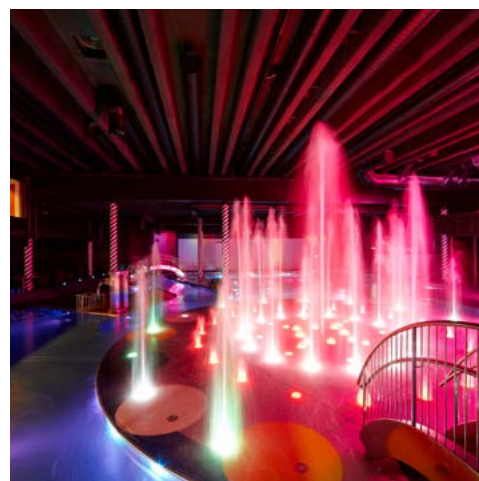
[info@sarapirtti.fi](mailto:info@sarapirtti.fi)

[www.sarapirtti.fi](http://www.sarapirtti.fi)

[facebook.com/SarapirttiKippurasarvi](https://facebook.com/SarapirttiKippurasarvi)

[instagram.com/kippurasarvi](https://instagram.com/kippurasarvi)





**Founded:** 1986 (Holiday Club Resorts Oy); Holiday Club Saimaa opened in 2011.  
**Employees:** 782 (in total working at Holiday Club Resorts Oy)  
**Languages:** English  
**Season:** year-round  
**Note:** dogs are allowed; parking places available; next supermarket in 70 m  
**Special service for children:** Angry Birds Indoor Activity Park. 2400 m<sup>2</sup> in two floors, separate fee. Children's world: professional babysitters take care of children, separate fee.

#### Contact

Holiday Club Resorts Oy  
 Holiday Club Saimaa  
 Nina Fagerlund-Anttila  
 Rauhanrinne 1  
 55320 Rauha  
 Tel. +358 (0) 40 001 5580  
[nina.fagerlund-anttila@holidayclub.fi](mailto:nina.fagerlund-anttila@holidayclub.fi)  
[hotelsales.saimaa@holidayclub.fi](mailto:hotelsales.saimaa@holidayclub.fi)  
[www.holidayclubresorts.com/en/Resorts/Saimaa](http://www.holidayclubresorts.com/en/Resorts/Saimaa)  
[facebook.com/HolidayClubSuomi](https://facebook.com/HolidayClubSuomi)  
[youtube.com/user/HolidayClubfi](https://youtube.com/user/HolidayClubfi)

## HOLIDAY CLUB SAIMAA

A holiday resort by the lake Saimaa opened its doors 2011. Accommodation in both hotel rooms and good-quality holiday houses. Three restaurants, a pool area, various activities incl. golf and bowling.

#### ACCOMMODATION

Spa hotel Holiday Club Saimaa's rooms are located in three separate hotel wings, which all have their own unique atmosphere. You can choose between a Castle hotel which is in a hospital building from 1920's, intimate Gant hotel and family friendly and spacious Club hotel. All rooms are non-smoking. All rooms have an indoor access to the spa, restaurants and activities, including ice arena. You can leave your room comfortably wearing a bathrobe and access the spa without going outside.

**Number & type of accommodation:** 229 hotel rooms. 291 holiday houses and apartments

**Facilities:** hotel rooms with bath rooms. Houses and apartments fully equipped with private sauna and full kitchen. Houses also have a fireplace.

#### RESTAURANTS

3 restaurants: Classic Pizza for pizzas with a twist and salads. Le Biff, a la carte especially good steaks. O'Learys, Boston-styled restaurant with hamburgers, ribs etc food. Beatles Bar and pool area, serving drinks.

#### SPA & WELLNESS

Hotel accommodation incl. use of pool area: several pools and two waterslides, saunas separate for men and women, inside pool area children sauna, on the rooftop smoke sauna and pool open on summer time.

Sauna world: separate sauna world with four different saunas and relaxation pool, extra fee. Harmony Spa: all kinds of beauty treatments, extra fee.

#### ACTIVITIES

Winter: indoor pool area. Angry Birds Indoor Activity Park. Bowling. Saimaa Adventures organizes activities next to our main building: skate rental for skating on ice, ice karting with ATVs, skiing equipment rental.

Summer: Indoor and outdoor pool area. Outdoors tennis court. Outdoors padel court. Full 18-hole golf course 1,5 km from the hotel: Holiday Club Saimaa Golf. Saimaa Adventures next to our main building: rental for boats, SUP boards. Arranged activities: boating on lake, fishing trips, SUP lessons. Bicycle rental.

#### Prices:

Price list with net rates available to download.





## IMATRAN KYLPYLÄ SPA

Imatran Kylpylä Spa is Eastern Finland's most diverse spa hotel, located on the shores of Lake Saimaa. We have good traffic connections and are situated close to the centre of Imatra. We offer a wide range of services all conveniently in the main building. Our heart is the Taikametsä recreation Spa.

### ACCOMMODATION

We offer a wide selection of quiet hotel rooms to suit every budget. We also have holiday apartments which provide an excellent alternative for longer stays.

**Number & type of accommodation:** In total 283 rooms and apartments as follows: 12 Hostel rooms (2-6 beds), 15 Sport group rooms (2-4 beds), 35 Economy Twin rooms (2 beds), 29 Standard Twin rooms (2 beds), 48 Promenade Twin rooms, superior (4 beds), 32 Promenade Double rooms, superior (4 beds), 28 Chalet jr Suites, (4 beds), 8 Chalet Suites (6 beds), 28 Villa Holiday Apartments (4-8 beds), 48 Holiday Apartments or suites (2-8 beds)

**Facilities:** WiFi, TV, phone, bathroom w/shower, hairdryer, minibar, bathrobes, towels, bathroom amenities; economy and standard rooms also: air cooling; superior rooms also: kettle set, bath slippers, balcony; chalets, villas and apartments: full equipped kitchen, sauna, laundry machine, terrace/ balcony

### RESTAURANTS

Our restaurants and café are famous for their excellent tasting delicacies and an abundant buffet selection.

**Type of restaurants:** Buffet restaurant and terrace, a la carte (international), cafeteria, pool bar, bowling bar, lobby bar

### SPA & WELLNESS

Our exercise facilities and gyms are open from 7:00 to 22:00 h every day. Our gyms have a very good selection of David and Concept Bermuda gym equipment. Access is free for overnight guests. Our exercise facilities also include indoor sports, e.g. badminton and tennis. We also have an 8-lane bowling alley. Other ways to relax after a long day at work include a massage at Beauty Spa Wellamo.

### Prices:

Rates are only available on request. All rates include VAT, breakfast, daily use of pools and gym, program

Economy Twin & Standard Twin rooms: price/ night - single room; price/ night - double rooms; price/ night/ person - extra bed (not available in Economy)

Promenade Twin & Double rooms, superior: price/ night - single rooms; price/ night - double rooms; price/ night/ person - extra bed

Chalet jr Suites, single or double: price/ night - single room; price/ night/ person - extra bed

Chalet Suites, single or double: price/ night - single room; price/ night/ person - extra bed

Villas and Holiday Apartments: rates upon request

**Founded:** 1985

**Employees:** 100

**Languages:** English

**Season:** year-round

**Note:** dogs are allowed; parking places available; next supermarket in 5 km

**Special service for children:** Children's pool, water slides, indoor playroom and outdoor playground, two child-friendly beaches, and plenty of fun activities including board games and air hockey.

**Winter activities:** spa, pools, skiing, skating, snowshoe hikes, ice-hockey, biathlon

**Summer activities:** spa, pools, swimming, hikes, cruises on the lake, sightseeing, golf, frisbee golf

**Other activities and services:** Good indoor sports facilities, well-equipped gym, instructor-led fitness and water aerobics classes, diverse weekly program, and a modern 8-lane bowling alley. Excellent hiking or cross-country skiing routes that start right at the front door of the Spa. Two full-length golf courses, a Frisbee golf course, and the various top-quality sports facilities.

**Packages:** Holiday packages, Christmas and New Year packages

### Contact

Imatran Kylpylä Oy

Harri Hirvelä

Purjekuja 2

55420 Imatra

Tel. +358 (0) 20 7100 515 (Harri)

[harri.hirvela@imatrankylpyla.fi](mailto:harri.hirvela@imatrankylpyla.fi)

[myynti@imatrankylpyla.fi](mailto:myynti@imatrankylpyla.fi)

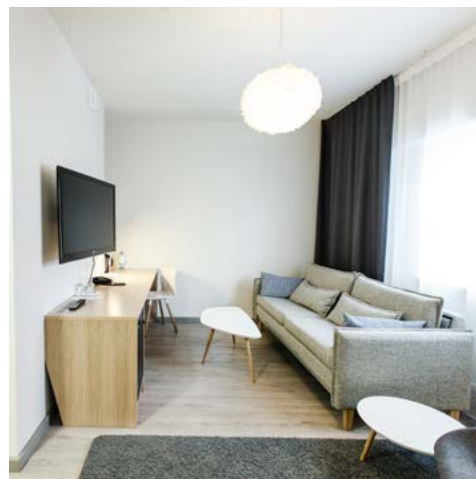
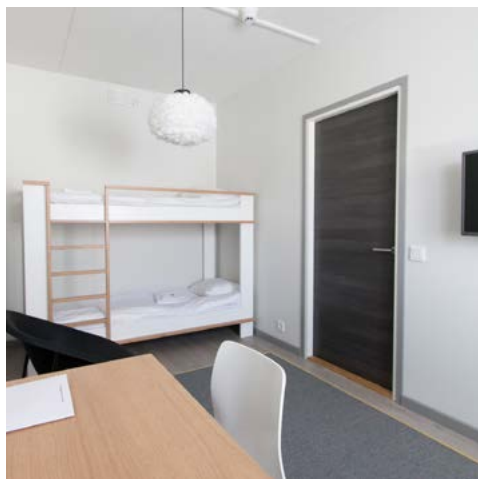
[www.imatrankylpyla.fi](http://www.imatrankylpyla.fi)

[facebook.com/ImatraSpa](https://facebook.com/ImatraSpa)

[twitter.com/ImatraSpa](https://twitter.com/ImatraSpa)

[vk.com/imatrankylpyla](https://vk.com/imatrankylpyla)





**Founded:** 1983

**Employees:** 40

**Languages:** English, German

**Season:** year-round

**Note:** dogs are allowed; parking places available; supermarket under the same roof

**Special service for children:** play room, travel cots, toys etc.

#### Contact

Original Sokos Hotel Lappee

Jonna Vuorinne

Brahenkatu 1

53100 Lappeenranta

Tel. +358 (0) 10 762 1000

[jonna.vuorinne@sok.fi](mailto:jonna.vuorinne@sok.fi)

[sales.lappee@sok.fi](mailto:sales.lappee@sok.fi)

[www.sokoshotels.fi/en/lappeenranta/sokos-hotel-lappee](http://www.sokoshotels.fi/en/lappeenranta/sokos-hotel-lappee)

[facebook.com/OriginalSokosHotelLappee](https://www.facebook.com/OriginalSokosHotelLappee)

[facebook.com/OriginalSokosHotelLappee](https://www.facebook.com/OriginalSokosHotelLappee)

## ORIGINAL SOKOS HOTEL LAPPEE

Original Sokos Hotel Lappee is located in the centre of Lappeenranta within the shopping centre IsoKristiina. The hotel guests have a great variety of services at their disposal including interesting shops, attractive restaurants and cafés. A cinema and the Lappeenranta City Theatre are also under the same roof.

#### ACCOMMODATION

**Number & type of rooms:** In total 260 rooms; following categories: standard queen, standard twin, family queen, superior twin, junior suite, superior queen, pet rooms

**Facilities:** shower/ bath tub, air conditioner  
You can make yourself a cup of hot coffee or tea in all our rooms – for free!

#### RESTAURANTS

Six restaurants in total. Restaurant Trattoria CASA serves customers with Italian flair from lunch to late at night. Soul BAR & PIANO quenches your thirst while Coffee House IsoKristiina on the shopping centre's main corridor complements our offering with café services.

#### SPA & WELLNESS

Sauna facilities and pool area offer some luxury amidst everyday life. The gym and guest saunas are available for hotel guests free of charge.

**Bookable saunas:** The sauna compartment was renovated in autumn 2014. The bookable sauna fits 10 people (max. 15) comfortably.

The lounge area enables dining from the sauna compartment's own menu. The stylish and comfortable pool area adds to the feeling of space and the new compact gym adjacent to the sauna compartment is also available for bookable sauna guests.

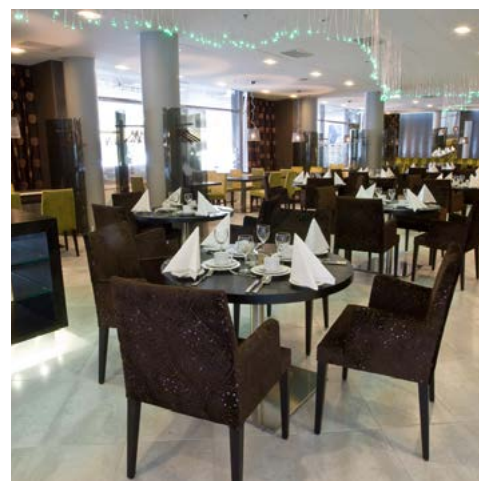
#### MEETING FACILITIES

The meeting facilities are all the rage! For example, the brainstorming facility Husaari and conference room Kaukas enable various types of consultations alongside traditional meetings. There are enough facilities for up to 150 persons – banquet rooms for up to 300 persons.

#### Prices:

Rates available on request only.





## SCANDIC PATRIA

Scandic Patria is centrally located hotel, near Lake Saimaa and Fortress area for business, meeting and leisure travelers. We have 133 well equipped rooms, most of them with own balconies. Free Wi-Fi available in all hotel area. There is parking space in the garage and on the back yard.

### ACCOMMODATION

**Number & type of rooms:** Total 133 rooms. 14 standard single, 9 superior single, 94 standard twin, 10 superior extra twin, 4 family superior plus, 2 junior suite

**Facilities:** TV, minibar, safety deposit box, iron and ironing board, hair dryer, balconies in most of twin rooms, kettle in superior rooms

### RESTAURANTS

Restaurant Torilla and Bar is at guests' service from Monday until Saturday during dinner time.

### SPA & WELLNESS

Sauna located on the 5th floor with nice park or lake view and jacuzzi. Well equipped small gym on the 5th floor.

### Prices:

Rates available on request only.

**Employees:** 25

**Languages:** English

**Season:** year-round

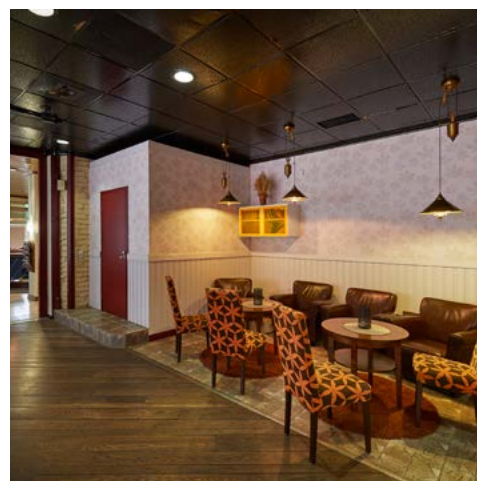
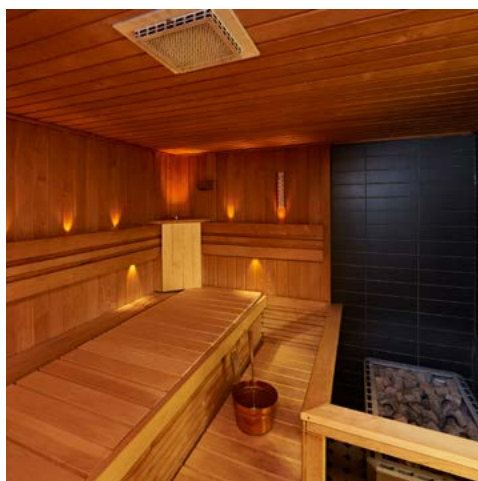
**Note:** dogs are allowed; parking places available; 200 m to town centre with supermarkets

**Special service for children:** Playing area in the restaurant.

### Contact

Scandic Hotels Oy/ Scandic Patria  
Päivi Mikkola (Sales Agent)  
Kauppakatu 21  
53100 Lappeenranta  
Tel. +358 (0) 5 677511  
[meeting.patria@scandichotels.com](mailto:meeting.patria@scandichotels.com)  
[patria@scandichotels.com](mailto:patria@scandichotels.com)  
[www.scandichotels.com](http://www.scandichotels.com)





**Languages:** English, German

**Season:** year-round

**Note:** dogs are allowed; parking places available

#### Contact

Hotel Cumulus City Lappeenranta  
Karoliina Rnjak, Key Account Manager,  
Restel Hotel Group  
Valtakatu 31  
53100 Lappeenranta  
Tel. +358 (0) 40 632 9055 (Karoliina)  
[karoliina.rnjak@restel.fi](mailto:karoliina.rnjak@restel.fi)  
[lappeenranta.cumulus@restel.fi](mailto:lappeenranta.cumulus@restel.fi)  
[www.cumulus.fi/en/hotels/lappeenranta/cumulus-city-lappeenranta](http://www.cumulus.fi/en/hotels/lappeenranta/cumulus-city-lappeenranta)

## HOTEL CUMULUS CITY LAPPEENRANTA

Hotel Cumulus City Lappeenranta offers comfortable accommodation in the heart of Lappeenranta. Enjoy the relaxed atmosphere of Lappeenranta, explore the city's bustling market places, taste local delicacies or take a cruise on Lake Saimaa, the largest lake in Finland.

#### ACCOMMODATION

Cumulus City Lappeenranta is a cozy hotel in the centre of Lappeenranta.

**Number & type of rooms:** The hotel has 95 rooms, including Standard rooms for one, two or three persons. The hotel also features Combi rooms and Superior rooms. There is also one room in the hotel that is suitable for the needs of disabled guests.

**Facilities:** All rooms have a TV, hair dryer, fast 1 Gb internet and Pillow Menu. Some rooms have room for an extra bed, mattress for a child or a baby cot.

Standard rooms offer separate 100 cm wide beds or double bed. Single rooms have 120–140 cm wide beds. Some of the rooms have room for one extra bed. Room sizes vary from 14,5 to 21 m². Pets allowed in some rooms; minibar/ mini-fridge

Superior rooms offer separate 100–120 cm wide beds or 200 cm wide double bed. Single rooms have 120 cm wide beds. Room sizes vary from 14,5 to 21 m². 2-sided make-up mirror, toiletries, bathrobe, minibar, iron and ironing board, clothes brush, water boiler

#### RESTAURANTS

1 Restaurant and 1 pub

#### SPA & WELLNESS

Sauna and swimming pool

#### ACTIVITIES

We want to make things easier for our guests by selling tickets to a variety of destinations. We sell, for example, tickets to day cruises on Lake Saimaa.

Sunny Bunny hops straight into your heart!

Sunny Bunny is the Cumulus City & Resort hotels' very own resident mascot that will have you feeling bright and cheery even when the weather is cloudy and rainy.

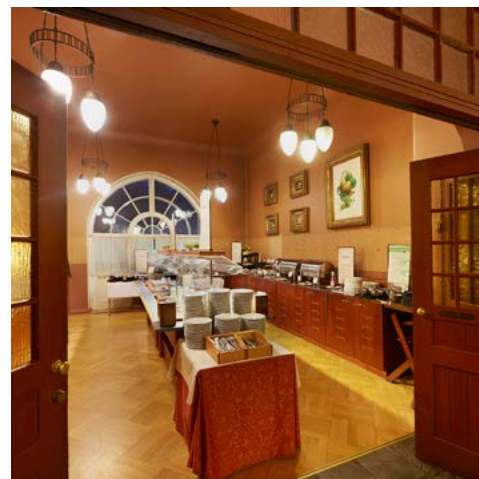
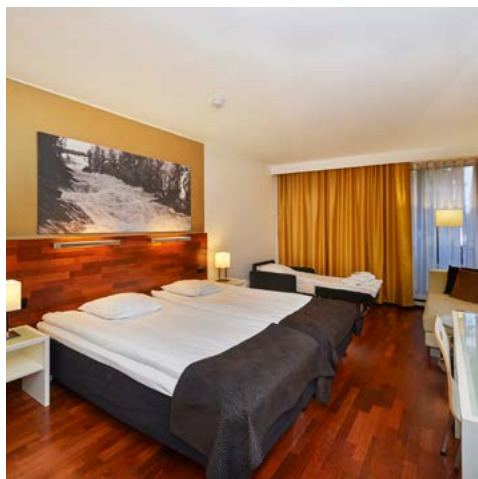
Sunny Bunny's picks:

- Lappeenranta Sandcastle (in the summer)
- Children's Traffic Town
- Flowpark adventure park
- Myllysaari Family Park
- Angry Birds Activity Park

#### Prices:

Rates available on request only.





## CUMULUS RESORT IMATRAN VALTIONHOTELLI

See the unique cultural landscape by the river Vuoksi and Imatrankoski rapids. The handsome castle of Cumulus Resort Imatran Valtionhotelli offers dreamlike accommodation, complete with pampering at our spa. The other side of our hotel overlooks an impressive landscape with the Vuoksi river and green wilderness. And on the other side, only a hundred meters from our hotel, you will find the best shops and culture of Imatra city center.

### ACCOMMODATION

The pampering spa hotel Cumulus Resort Imatran Valtionhotelli offers versatile accommodation for different needs – modern accommodation in the spa wing for business travelers or historical atmosphere in the Castle for relaxation or celebration. Some of the rooms have beautiful views of the rapids.

**Number & type of rooms:** In total 137 rooms, of which 54 are located in the castle and 83 in the modern spa wing. There is a connecting hallway between the Castle hotel and the Spa hotel. You can choose between a Superior room, Mini-Suite or a luxurious Suite.

**Junior suite in Linna building:** 35–40 m<sup>2</sup>, 100 cm wide twin beds.

**Junior suite in Spa building:** 45 m<sup>2</sup>, 100 cm wide twin beds.

**Standard rooms in Spa building:** 20–30 m<sup>2</sup>, 120 cm wide bed in single rooms and two separate 100 cm wide beds in twin rooms.

**Superior rooms in Spa building:** 25–30 m<sup>2</sup>, 100 cm wide twin beds.

**Superior rooms in Linna building:** 15–30 m<sup>2</sup>, 100–140 cm wide bed in single rooms, 100 cm wide separate bed in twin rooms, 160 cm wide bed in double rooms.

**Suite in Linna building:** 70 m<sup>2</sup>, 200 cm wide bed.

**Tower suite in Linna building:** 80 m<sup>2</sup>, 200 cm wide bed.

**Facilities:** All rooms have a TV, radio, mini-bar and fast 1 Gb internet. Some rooms have room for an extra bed or a baby cot.

### RESTAURANTS

Restaurants include the atmospheric Linnasali, laid-back Linnaklubi and cosy Linnasalonki. Bar Café Vuoksen Helmi in the pool area serves small bites and drinks by the pools.

In the summer, our guests can enjoy the splendid scenery on the terraces of the castle or Bar Café Vuoksen Helmi.

### SPA & WELLNESS

Relax in our refreshing spa and enjoy the lovely warmth of our saunas. In addition to the regular pool, we have two jacuzzis, a children's pool and relaxing warm rock beds.

**Saunas:** Separate steam sauna for women, traditional saunas, an Oriental sauna, a lavender sauna. Our men's sauna selection includes traditional saunas and the Castle Sauna. Our guests can also try out an infrared sauna, which has many beneficial health effects.

**Prices:** Rates available on request only.

**Languages:** English, German

**Season:** year-round

**Note:** dogs are allowed; parking places available; next supermarket in 1 km

**Special service for children:** Sunny Bunny is the Cumulus City & Resort hotels' very own resident mascot that will have you feeling bright and cheery even when the weather is cloudy and rainy. Children's playground.

### Contact

Cumulus Resort Imatran Valtionhotelli  
Karoliina Rnjak, Key Account Manager,  
Restel Hotel Group

Torkkelinkatu 2, 55100 Imatra

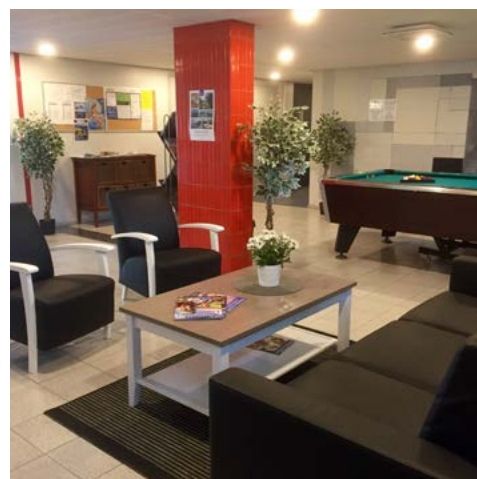
Tel. +358 (0) 40 632 9055

[karoliina.rnjak@restel.fi](mailto:karoliina.rnjak@restel.fi)

[valtionhotelli.cumulus@restel.fi](mailto:valtionhotelli.cumulus@restel.fi)

[www.cumulus.fi/en/hotels/imatra/cumulus-resort-imatran-valtionhotelli](http://www.cumulus.fi/en/hotels/imatra/cumulus-resort-imatran-valtionhotelli)





**Founded:** 1979

**Employees:** 8

**Languages:** English

**Season:** 01.06. - 31.08.2018

**Note:** dogs are allowed; parking places available; next supermarket in 1,5 km

#### Contact

Armpa Ltd./ Summer Hotel Karelia-Park  
Jatta Rutanen  
Korpraalinkuja 1  
53810 Lappeenranta  
Tel. +358 (0) 50 567 2287  
[jatta.rutanen@karelia-park.fi](mailto:jatta.rutanen@karelia-park.fi)  
[park@karelia-park.fi](mailto:park@karelia-park.fi)  
[karelia-park.fi/en](http://karelia-park.fi/en)

## SUMMER HOTEL KARELIA-PARK

Summer Hotel Karelia-Park provides low-cost accommodation just a few kilometers away from the city centre, along good public transportation routes. Hotel's location in the middle of peaceful parks guarantees a good night's sleep. Hotel's spacious rooms include kitchen facilities and private bathrooms and room rates are affordable.

#### ACCOMMODATION

**Number & type of accommodation:** In total 84 rooms. 60 single rooms and twin rooms (altogether), 12 triple rooms, 6 apartments for 4 persons, 6 apartments for 5 persons.

**Facilities:** Hotel rooms are equipped with a spacious closet, a desk, dining table and chairs and a book shelf. Free internet can be used in all our rooms with internet cable. There are televisions in most of the rooms.

#### SPA & WELLNESS

Spacious sauna section, which includes two separate saunas (1 for men and 1 for women) and shower rooms. Sauna is included in the hotel room rates. Hotel guests are free to use our sauna every evening.

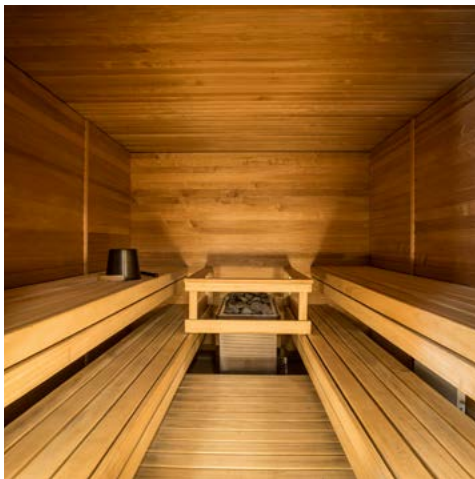
#### SUMMER ACTIVITIES

Jogging paths start right behind the hotel, the nearest beach is just 800 meters from the hotel. There is a mini-golf course just 300 meters from the hotel and near the hotel there is sport center which provides indoor sports (floorball, tennis, squash, gym, group exercise classes). These possibilities are available just around the corner of the hotel.

#### Prices:

price per night - single room  
price per night - twin room  
price per night - triple room  
price per night - apartment for 4 persons  
price per night - apartment for 5 persons





## HOTEL SALPA

The idyllic and low cost 34-room Hotel Salpa is located on a hillside site with a beautiful view towards a clear water lake Kivijärvi. It includes a spacy restaurant for 200 persons, conference department and leisure facilities, saunas and a swimming pool.

### ACCOMMODATION

**Number & type of rooms:** 34 rooms

**Facilities:** Each guest room at Hotel Salpa has a bathroom, a TV and a terrace or a balcony. Flat-screen TV, air conditioning, private bathroom, heating, clothes rack, shower, toilet, bathroom, bathtub or shower, toilet paper, towels, linen.

Entire unit located on ground floor, entire unit wheelchair accessible. Lake, garden and landmark view

### RESTAURANTS

bar and restaurant

### SPA & WELLNESS

two saunas and pool, gym

### Prices:

Rates valid for:

01.01. - 31.05. and 01.09. - 31.12.2018

price per night - single room

price per night - twin room

price per night - triple room

price per night - family room (1-2 adults, 1-3 children)

Rates valid for:

01.06. - 31.08.2018

price per night - single room

price per night - twin room

price per night - triple room

price per night - family room (1-2 adults, 1-3 children)

**Founded:** 2017

**Employees:** 10

**Languages:** English, Russian

**Season:** year-round

**Note:** dogs are allowed; parking places available; next supermarket in 2 km

**Special service for children:** beach and swimming pool

**Summer activities:** walking, fishing

**Winter activities:** skiing, ice fishing

### Contact

Hotel Salpa

Lev Pervykh

Lappeenrannantie 265

54530 Luumäki

Tel. +358 (0) 10 311 3840

[lev.pervykh@hotellisalpa.fi](mailto:lev.pervykh@hotellisalpa.fi)

[info@hotellisalpa.fi](mailto:info@hotellisalpa.fi)

[www.hotellisalpa.fi](http://www.hotellisalpa.fi)

[facebook.com/hotellisalpa](https://facebook.com/hotellisalpa)

[twitter.com/hotellisalpa](https://twitter.com/hotellisalpa)

[instagram.com/hotelli\\_salpa](https://instagram.com/hotelli_salpa)

[vk.com/hotelsalpa](https://vk.com/hotelsalpa)





**Founded:** Spa Hotel 2016/ Old Spa 1912  
**Employees:** 20  
**Languages:** English  
**Season:** year-round  
**Note:** pets are allowed; parking places available; next supermarket in 400 m  
**Special service for children:** toys in pool area  
**Summer activities:** boat cruises, beach, cycling, canoeing  
**Winter activities:** skiing, ice skating (lake Saimaa)  
**Other activities:** group fitness exercises (in pool, gym, yoga etc.), Nordic walking sticks

#### Contact

Lappeenranta Spa  
 Ainonkatu 17  
 53100 Lappeenranta  
 Tel. +358 (0) 20 761 3761  
[sales@oldspa.fi](mailto:sales@oldspa.fi)  
[www.kylpyla.info](http://www.kylpyla.info)  
[facebook.com/lappeenrannankylpyla](https://facebook.com/lappeenrannankylpyla)

## LAPPEENRANTA SPA

Lappeenranta Spa is one of the most charming and unusual spa hotels in Finland. It is located on the shore of Finland's biggest lake, Saimaa, and right in the centre of Lappeenranta, one of the biggest cities in Eastern Finland. When you want to have a relaxing wellness holiday on Saimaa, make a reservation for a spa holiday in Lappeenranta.

Both spa buildings have been renovated in the 2000s to provide modern-day facilities while cherishing the long tradition of spa operations in Lappeenranta.

#### ACCOMMODATION

We offer accommodation in two buildings; Old Spa, beautiful 100-year-old Jugendstil building with nicely decorated 28 Deluxe rooms and Mini suites, some of rooms with lake view, and Spa Hotel with 24 modern Standard and Superior balcony rooms.

**Number & type of rooms:** In total 52 rooms (28 Deluxe rooms and Mini suites, 24 modern Standard and Superior balcony rooms).

#### Facilities:

Old spa and Superior rooms: shower, TV, minibar, coffee capsules; bathrobes, slippers and hairdryer.

Standard rooms: shower, TV, minibar, kettle, bathrobes and hairdryer.

#### RESTAURANTS

One restaurant (breakfast, lunch, dinner), Lobby Bar

#### SPA & WELLNESS

Finnish saunas (men/women), Turkish bath, two pools, two jacuzzi.

**DAY SPA:** pampering treatments, cosmetician, pedicure

#### Prices:

Spa Hotel - Standard rooms:

price per night - single room

price per night - twin room

Spa Hotel - Superior Balcony:

price per night- single room

price per night - twin room

Old Spa - DeLux:

price per night - single room

price per night - twin/ dbl room

Old Spa - DeLux Saimaa:

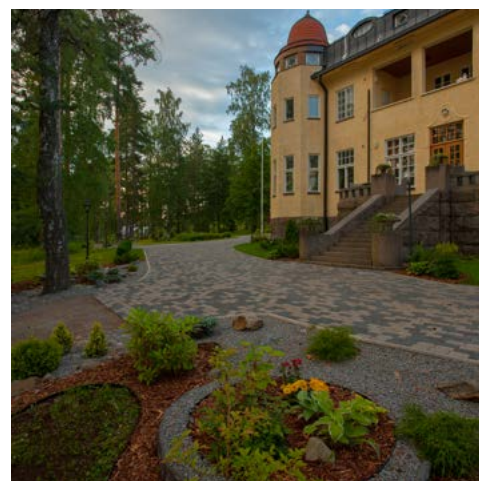
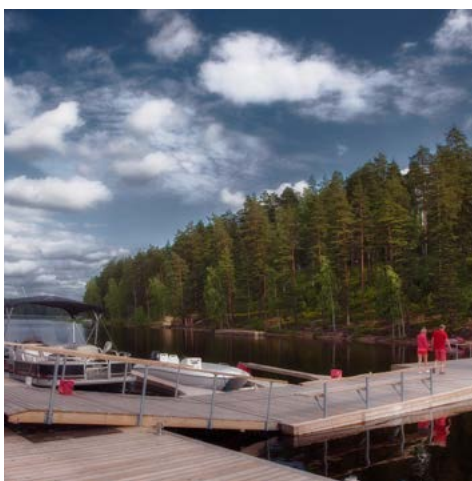
price per night- single room

price per night- twin/dbl room

Old Spa - Mini suite Saimaa

price per night - DBL or SGL use





## RANTALINNA HOTEL AND RESTAURANT

Rantalinna is a small historical Boutique Hotel, Jugendstil, located on the hill on the shore of lake Saimaa.

The Jugendstil castle was built in 1912 by Duke Alexander, member of Romanovs family, and it is under museum protection, many decoration items and furniture is left from that time. Building and rooms are renovated and equipped with modern facilities.

At Rantalinna there are two saunas with hot tubs on lake shore, boats, bikes to rent.

### ACCOMMODATION

6 suites with historical furniture, and 6 standard rooms are offering their guests memorable stay in beautiful surroundings.

**Number & type of rooms:** 14 rooms

**Facilities:** Fully equipped, TV, Wi-Fi, bathroom, room shoes, bathrobes, toiletries.

### RESTAURANTS

One à la carte restaurant. Morning and evening meal is served in our restaurant, which is open only for hotel guests, we carefully select local ingredients, and serve both breakfast and dinner on à la carte menu.

### SPA & WELLNESS

Classical Finnish hotel sauna, saunas on lakeshore with hot tub /wooden barrel filled for our guests with hot water.

### Prices:

Rates and commission on request.

price per night - suites

price per night - standard rooms

**Founded:** 2012

**Employees:** 4

**Languages:** English, German, Japanese

**Season:** 01.05. - 01.10.

For any other time it should be asked in advance.

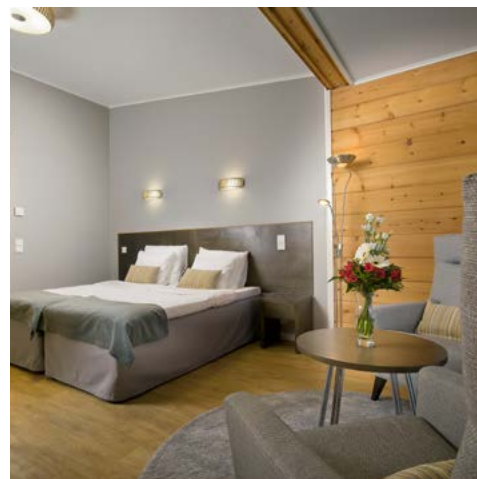
**Note:** dogs are allowed; parking places available; next supermarket in 5 km

**Summer activities:** boats, water ski, motor boats, bikes, massage, hiking, berries and mushrooms picking

### Contact

Ruokolahden Linna Oy/  
Rantalinna Hotel and Restaurant  
Aljona Kähär  
Rantalinnantie 127  
56100 Ruokolahti  
Tel. +358 (0) 40 152 8150  
[rantalinna@rantalinna.eu](mailto:rantalinna@rantalinna.eu)  
[www.rantalinna.eu](http://www.rantalinna.eu)





**Founded:** 2013

**Employees:** 7

**Languages:** English, German

**Season:** year-round except during Christmas time (mid-December - 1st January)

**Note:** dogs are not allowed; parking places available; next supermarket in 2,5 km

**Special service for children:** A small playing area at the lobby with toys and drawing materials.

#### Contact

Saimaatrast Oy/ Hotelli Rento  
Anna Maganova  
Kohonkankaantie 98  
55420 Imatra  
Tel. +358 (0) 46 843 3138  
[anna.maganova@hotellirento.fi](mailto:anna.maganova@hotellirento.fi) or  
[sales@hotellirento.fi](mailto:sales@hotellirento.fi)  
[info@hotellirento.fi](mailto:info@hotellirento.fi)  
[www.hotellirento.fi](http://www.hotellirento.fi)  
[facebook.com/hotellirento](https://facebook.com/hotellirento)  
[instagram.com/hotellirento](https://instagram.com/hotellirento)  
[vk.com/hotellirento](https://vk.com/hotellirento)

## HOTEL RENTO

Hotel Rento was built in 2013 from softwood timber showcasing a unique Scandinavian design.

Hotel Rento offers free Wi-Fi and free parking for its guests. All hotel guests can enjoy authentic Finnish sauna free of charge.

Hotel Rento is located only minutes away by foot from all sports facilities and famous Saimaa Lake!

#### ACCOMMODATION

Surrounded by beautiful Finnish nature our wonderful hotel offers a relaxing stay in 29 modern twin rooms. Our guests may choose from two types of rooms: Standard and Superior.

**Number & type of rooms:** In total 29 rooms. 27 Standard rooms and 2 Superior rooms with balcony.

**Facilities:** Standard room: two twin beds, bed linen and towels, private bathroom with floor heating, bathroom amenities, study table and chair, flat-screen TV, arm chair, two nightstands, hairdryer, slippers

Superior room: two twin beds, bed linen and towels, private bathroom with floor heating, bathroom amenities, study table and chair, flat-screen TV, arm chair, two nightstands, hairdryer, slippers

Superior room is also equipped with refrigerator, coffee maker, tea kettle, and additionally has bathrobes.

#### RESTAURANTS

One restaurant that serves buffet breakfast, also upon request lunch, dinners and other meals could be arranged.

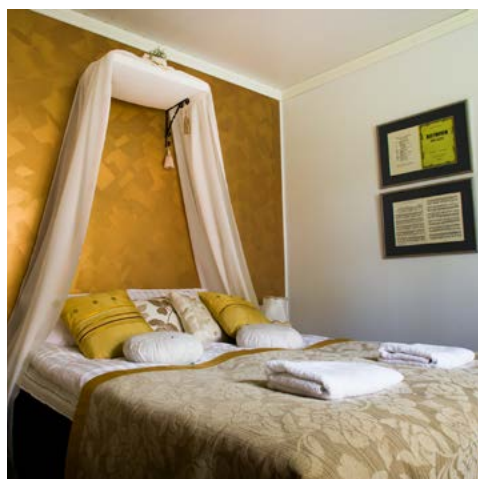
#### SPA & WELLNESS

Wonderful and spacious sauna with a separate fireplace room.

#### Prices:

Rates available on request only.





## SALPALINJAN HOVI

Apartment hotel Salpalinjan Hovi is located 9 kilometers from the Lappeenranta city center. It is surrounded by the rich and beautiful nature of South Karelia as well as historic sites.

### ACCOMMODATION

The hotel, a former a village school built from log, is now fully renovated and offers six modern apartment suites which have been furnished according to different school subjects. Each room has its own kitchen corner, bathroom and TV.

**Number & type of apartments:** Six apartments. Each room is equipped like an individual home and is suitable for a long stay.

**Facilities:** The kitchen has a refrigerator, stove, a microwave oven, an electric drip coffee maker, electric kettle and tableware.

The bathroom has a toilet, shower and a hair dryer. Other equipment can be asked from the reception. There is a roofed fireplace with a grill outside, available for all the guests.

### SPA & WELLNESS

The hotel's traditional Finnish sauna is available through reservation. Price for group (max. 6 persons) 20 €/ first hour, extra hours 10 €/ hour. The hot tub with sauna (01.05. - 31.10.) price for group (max 6 persons) 60 €/ 2 hours.

### ACTIVITIES

**Winter activities:** You can go skiing, ice-skating and snowshoeing straight from the hotel.

**Summer activities:** Rutola-village trail, geologically interesting watershed-area and timber rafting history, a swimming beach 400 meters from the hotel door, great bird watching opportunities around and near the hotel, fishing opportunities, good mushroom and berry-picking grounds, good opportunities for cycling, canoeing possible - the hotel is located in the middle of a canoeing route.

### Prices:

Price list and commission available to download on request.

Apartments 1, 2, 3 (25 m²):

price/ night - for 1 pers., price/ night - 2 pers., price/ night - 3 pers., price/ night - 4 pers.

Apartment 4 (18 m²):

price/ night - for 1 pers., price/ night - for 2 pers.

Apartment 5 (46 m²):

price/ night - for 1 pers., price/ night - for 2 pers., price/ night - for 3 pers., price/ night - for 4 pers., price/ night - for 5 pers., price/ night - for 6 pers.

Apartment 6 (32 m²):

price/ night - for 1 pers., price/ night - for 2 pers., price/ night - for 3 adults, price/ night - for 2 adults and 2 children

**Founded:** 1993

**Employees:** 2

**Languages:** English

**Season:** year-round

**Note:** dogs are not allowed; parking places available; next supermarket in 5 km

**Special service for children:** Outside and inside games available for borrowing. Hotel has own playground with swings and sand toys. An old sand court of the school is for playing.

**Packages:** Ask Christmas, New Year and winter holiday offers by email:

[info@salpalinjanhovi.fi](mailto:info@salpalinjanhovi.fi).

Different season packages can be tailored to the customer's wishes.

### Contact

Salpalinjan Hovi/ Vaisor oy

Anne Sorsa-Vainikka

Vanha Mikkeliintie 125

53830 Lappeenranta

Tel. +358 (0) 50 336 0986

[anne.sorsavainikka@gmail.com](mailto:anne.sorsavainikka@gmail.com)

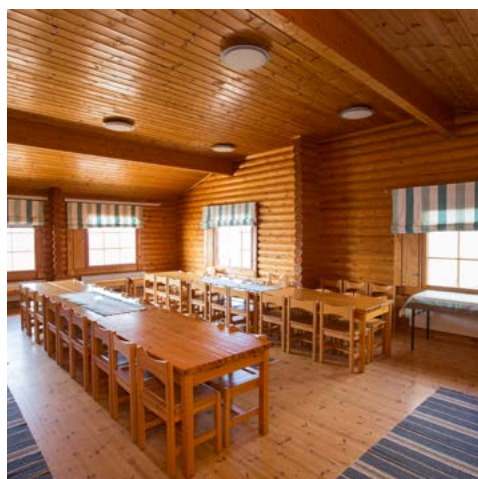
[info@salpalinjanhovi.fi](mailto:info@salpalinjanhovi.fi)

[www.salpalinjanhovi.com](http://www.salpalinjanhovi.com)

[facebook.com/salpalinjanhovi](https://facebook.com/salpalinjanhovi)

[youtube.com/watch?v=naOir12SDRO](https://youtube.com/watch?v=naOir12SDRO)





**Founded:** 1976

**Employees:** 7

**Languages:** English

**Season:** year-round

**Note:** dogs are not allowed; parking places available; next supermarket in 6,7 km

**Winter activities:** skiing on the ice, sauna, ice swimming, grilling

**Summer activities:** frisbee golf, swimming, sauna, hiking, grilling

**Other activities:** auditorium in main building

#### Contact

Päivärannan Kurssikeskus

Kirsi Kaljunen

Päivärannantie 7

55910 Imatra

Tel. +358 (0) 40 352 5870

[kirsi.kaljunen@evl.fi](mailto:kirsi.kaljunen@evl.fi)

[imatra.paivaranta@evl.fi](mailto:imatra.paivaranta@evl.fi)

[www.paivarantaan.fi](http://www.paivarantaan.fi)

## PÄIVÄRANNAN KURSSIKESKUS

Päiväranta training center is owned by Imatra parish and situated by Immalanjärvi, 15 km east of Imatrankoski and 13 km from the central bus- and railway station. Päiväranta offers fair and comfortable lodgings out in the open, in the vicinity of Finnish nature. Relax without a worry in a rentable beach sauna by the idyllic lake of Immala. Päiväranta has good facilities for congresses and meetings, training, camping and family gatherings. Päiväranta is open by appointment and all year round. One of our unique facilities is Finland's largest kota hut offering space for up to 100 people for celebrations.

### ACCOMMODATION

Päiväranta can accommodate up to 110 people in rooms designed for one to four people.

**Number & type of rooms:** The main building has beds for 50 and the second building has beds for 60 people.

**Facilities:** two to four beds, two chairs and a table

### RESTAURANTS

Our high-quality kitchen is offering guests delicious meals ranging from nutritious breakfast to festive dinners. Catering services are also offered.

### SPA & WELLNESS

Four saunas, two at shore and two inside the main buildings.

### Prices:

Rates available on request only.





## LOMA-OKSA: HUHTINIEMI CAMPING

Huhtiniemi Camping is a beautiful and natural camping site by Lake Saimaa. Inside the 10 hectares you'll find camping cottages, designated spots for caravans and tents as well as a few holiday apartments. There are also service buildings, kitchens, barbeque areas and many other services at your full disposal. The area also has a few saunas, which you can rent and a nice beach. The reception, along with a café where we serve both alcoholic and non-alcoholic beverages is located at the main gate.

### ACCOMMODATION

#### Holiday Apartments

The Huhtiniemi Camping area holds two holiday apartments. Both are two-bedroom apartments with a bedroom, living room, kitchen, shower and toilet. The apartments are both located in the same building, which is equipped with plenty of parking space, separate exits and a yard.

Apartment Lappeenranta: Apartment Lappeenranta is a nice 60 square meter space with a bedroom, living room, kitchen, shower and toilet. The apartment also has a fireplace, a television and a fully equipped kitchen. There are bed spaces for up to 5 people. Linen and breakfast are available, but not included in the price.

Apartment Imatra: Apartment Lappeenranta is a cozy 40 square meter space with a bedroom, living room, kitchen, shower and toilet. The apartment also has a fireplace, a television and a fully equipped kitchen. There are bed

spaces for up to 5 people. Linen and breakfast are available, but not included in the price.

#### Cabins

These cozy cabins are located all around our large 8 hectares camping area. We have 33 four person cabins and four two person cabins. The cabins do not come with sanitary or cooking facilities of their own. The toilets, showers and kitchens are located in the public service buildings of the area. Bed linen and breakfast are not included in the basic price.

Four person cabins: Our four person cabins are practical and nature-friendly cottages. All cabins have two double-beds, basic cabin amenities and a fridge. The cabins also have electricity and heating. The camping cottages are about 15 square meters large and each one of them has a small porch of its own.

Two person cabins: Our two person cabins are small and cozy suites. The cabins are about 10 square meters in size and come with two beds and a bedside table. They come with electricity and heating. Come feel the charm of a small camping cabin.

**Number & type of accommodation:** 33 four person cottages, 4 two person cottages, 2 holiday apartments

**Facilities:** Cottages without toilet, shower and kitchen. Apartments include them.

#### Prices:

Rates and commission on request.

**Founded:** 1989

**Employees:** 6

**Languages:** English

**Season:** 12.05. - 01.10.

**Note:** dogs are allowed; parking places available; next supermarket in 1,5 km

**Special service for children:** playgrounds in area

**Winter activities:** skiing

**Summer activities:** swimming, jogging, disc golf, boats, cycling

**Restaurants:** 1 cafe

**Spa & Wellness:** 3 saunas at the beach

### Contact

Loma-Oksa Oy/ Huhtiniemi Camping  
Riku Oksanen

Kuusimäenkatu 18

53810 Lappeenranta

Tel. +358 (0) 54515556

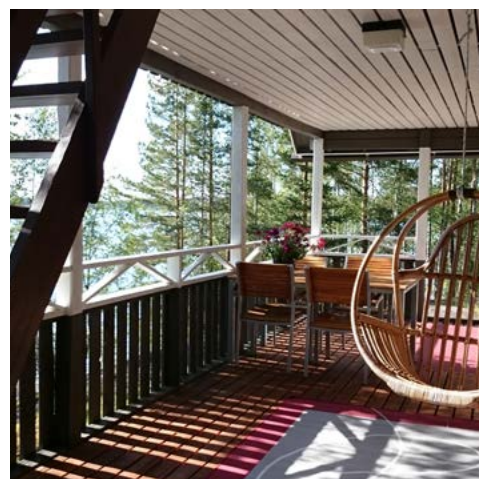
[riku.oksanen@huhtiniemi.com](mailto:riku.oksanen@huhtiniemi.com)

[info@huhtiniemi.com](mailto:info@huhtiniemi.com)

[www.huhtiniemi.com](http://www.huhtiniemi.com)

[facebook.com/huhtiniemicamping](https://facebook.com/huhtiniemicamping)





**Founded:** 1974

**Employees:** 2

**Languages:** English

**Season:** year-round

**Note:** dogs are not allowed; parking spaces available; next supermarket in 28 km, smaller grocery store in 7 km

**Winter activities:** cross-country skiing, snowshoeing (no equipment rental available)

**Summer activities:** biking, hiking, beach volley, tennis (no equipment rental available)

#### Contact

Kiiverin Lomamökkit

Tomi & Kari Kiiveri

Kiiverintie 10

59520 Saari kk

Tel. +358 (0) 50 300 4036,

+358 (0) 50 589 9232

[kiiverinloma@gmail.com](mailto:kiiverinloma@gmail.com)

[www.kiiverinlomamokit.fi](http://www.kiiverinlomamokit.fi)

## KIIVERIN LOMAMÖKIT

Six cottages by the quiet and peaceful lake (from 4 to 8 persons). Every cottage has their own beach and a rowing boat. Two of the cottages are suitable also for winter use.

#### ACCOMMODATION

**Number & type of cottages:** six cottages.

Cottage "Villa Pipsa": 4+2 persons, 57 m<sup>2</sup>, sauna (4 persons) only for summer use

Cottage "Perhonen": 4+2 persons, 70 m<sup>2</sup>, sauna (4 persons) all year use

Cottage "Sammukka": 4+1 persons, 65 m<sup>2</sup>, sauna (4 persons) all year use

Cottage "Rantarinne": 4+2 persons, 70 m<sup>2</sup>, 2 saunas (4 & 3 persons) only for summer use

Cottage "Kaukalokallio": 4+1 persons, 60 m<sup>2</sup>, sauna (4 persons) only for summer use

Cottage "Pitkäniemi": 6+2 persons, 85 m<sup>2</sup>, sauna (4 persons) only for summer use

**Facilities:** Electricity, cooker, microwave oven, electric heating, refrigerator, dishes, television, fireplace, running water, sauna, own rowing boat, place for barbeque, wood for the sauna and fireplace

#### SPA & WELLNESS

Wood-heated saunas for 4 persons in every cottage.

#### Prices:

Price list with consumer rates and commission is available to download.





## PATALAISKA COTTAGES

Cozy, affordable cottages with your own lake shore for rent in Ruokolahti, only a 30-minute drive from Imlatra. Peaceful nature and picturesque landscapes, fishing, berry picking, boating, biking, sauna, swimming and, of course, relaxing in a cozy environment. In winter, you have the opportunity to go skiing and ice-skating on the skiing tracks and ice rinks maintained by the municipality in the village center of Pohjalankila (about 5 km from the cottages). The services of the City of Imlatra with its spas (Imatran kylpylä and Holiday Club) and the Angry Birds Activity Park are just 35 km away. Patalaiska cottages are your choice number one if you are looking for independent vacation, relaxation or active holidays and services can easily be arranged on site, too. Have you got something to celebrate? Would you like a real French chef or traditional Karelian catering? Our partners are welcome to serve you and you can turn to them both directly and through us.

### ACCOMMODATION

Patalaiska Cottages: Nordic, Polar, Kantri and Lapponia.

**Number & type of cottages:** 4 cottages with 2 or more bedrooms in each of them.

Cottages are suitable for year-round living.

### Facilities:

Our four cottages hold something for everyone. The traditional timber villas Lapponia

and Kantri are located on adjacent properties (located about 80 meters away from each other) but situated quietly so our guests can perfectly be on their own. Both lodges sit on individual half-hectare properties with mostly pine trees on them and with their own beaches. Spruces between the properties provide a visual barrier both in summer and in winter. The modern glass wall cottages Nordic and Polar form a corresponding pair of cottages. Grandly situated on a slope, these glass villas offer a magnificent view on the landscape with its lakes. The small, wood-heated "moomin" saunas are a pleasant surprise for all vacationists. Each cottage is located on a half-hectare plot with own lake shore.

### RESTAURANTS

No restaurant; there is a well-equipped kitchen in each cottage. Nearest cafe-shop in 5 km.

### SPA & WELLNESS

Own sauna in each of the cottages. Cottages are located on a half-hectare plot with own lake shore (dock and rowing boat included).

### Prices:

Consumer rates are available on the website. Commission on request.

**Founded:** 2006

**Employees:** 2

**Languages:** English

**Season:** year-round

**Note:** dogs are allowed; parking places available; next supermarket in 20 km

**Special service for children:** Playing area for children in front of every cottage

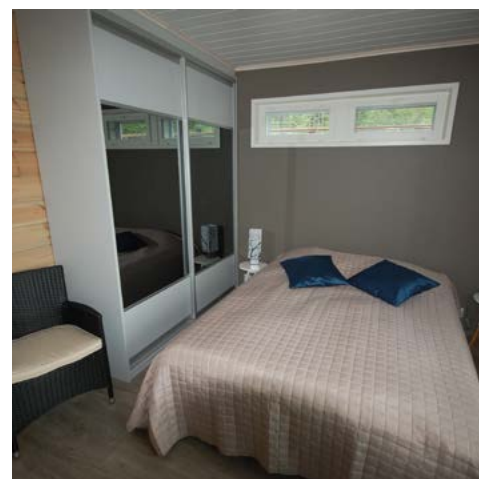
**Winter activities:** cross-country skiing, ice skating, ice fishing, winter swimming

**Summer activities:** fishing, collecting of berries and mushrooms, boating, hiking, mountain biking

### Contact

Patalaiska Cottages  
Mr Veli-Matti Kesälahti and Ms Natalia Kesälahti (owners)  
Kultarannantie 149  
56440 Pohjalankila  
Tel. +358 (0) 50 4411 094  
[info@patalaiska.fi](mailto:info@patalaiska.fi)  
[www.patalaiska.fi](http://www.patalaiska.fi)  
[facebook.com/patalaiska.cottages](https://facebook.com/patalaiska.cottages)





**Founded:** 2007

**Employees:** 2

**Languages:** English

**Season:** year-round

**Note:** dogs are not allowed; parking places are available; next supermarket in 500-800 m

**Special service for children:** Each villa has swings for children, 400 - 500 meters away from the villas public playground.

**Winter activities:** skiing (illuminated skiing race very near), ice fishing, skating (rink 1 km far away), slalom at Myllymäki about 58 km far away.

**Summer activities:** fishing, swimming, throwing disc golf, rowing by boat, biking, hiking, pick up berries, mushrooms

**Other activities & services:** Christmas tree available, Santa Claus available for a short visit on Christmas Eve

#### Contact

Tapion Huvilat

Ossi Tapio

Koskentie 3

54410 Ylämaa

Tel. +358 (0) 40 518 1115

[ossi.tapio@tapionhuvilat.net](mailto:ossi.tapio@tapionhuvilat.net)

[www.tapionhuvilat.net](http://www.tapionhuvilat.net)

[facebook.com/TapionHuvilat](https://facebook.com/TapionHuvilat)

## TAPION HUVILAT

Tapion Huvilat is located in Lappeenranta, Ylämaa on the shore of beautiful lake Lohonjärvi. Very near gem village (spectrolite of Ylämaa).

#### ACCOMMODATION

**Number & type of villas:** 3 high-equipped year-round villas with own private sauna and shore.

**Villa Ilona:** for max. 12 pers., construction finished in 2015

**Facilities:** 2 floors, 3 bedrooms with double beds, fireplace room with extra beds, sleeping places for total of 12 persons, 2 toilets (one with shower), larger lounge, fully equipped kitchen, a 10-person dining table, sauna area, stove with firewood, Royal -shape benches in the sauna, Kastor Saga – wood sauna stove, 2 smart – TV's, Blu-ray player, Wi-Fi, utility room (washing machine, drying cabinet, tumble dryer), rowboat, hot tub for 7 persons always ready for use. In the yard there is a barbecue hut. Fit for winter habitation, electric heating, air condition, network electricity, own well, jetty.

**Villa Viola:** for 6+2 pers. construction finished in 2008.

**Facilities:** 3 bedrooms, kitchen, loft, porch, sauna, 2 stories, 6+2 beds, 2 toilets, fit for winter habitation, electric heating, network electricity, own well, 2 TV's, DVD-player, Wi-Fi connection, broadband connection, full equipped kitchen, washing machine, drying cabinet fireplace, firewood, rowboat, jetty, 2 showers, Royal -shape benches in the sauna, changing room, electric soapstone stove in the sauna, bathing tub for rent

**Villa Helmi:** for 8+2 pers., construction finished in 2007.

**Facilities:** 3 bedrooms, kitchen, loft, porch, sauna, 2 stories, 8+2 beds, 2 toilets, fit for winter habitation, electric heating, network electricity, own well, 2 TV's, DVD-player, Wi-Fi connection, broadband connection, full equipped kitchen, washing machine, drying cabinet, fireplace, firewood, rowboat, jetty, 2 showers, Royal -shape benches in the sauna changing room, electric IKI-stove in the sauna, bathing tub for rent; hot tub on the terrace and small jacuzzi in the bathroom

#### SPA & WELLNESS

At Villa Ilona sauna (firewood), bathroom with 2 showers, outdoor jacuzzi. At Villa Helmi electric sauna, bathroom with 2 showers, small jacuzzi in the bathroom, outdoor hot tub (with firewood). At Villa Viola electric sauna, 2 showers bathroom, hot tub available.

#### Prices:

**Villa Ilona:**

price/ week (price for weeks 25-35, 52-1),

price/ weekend, price/ extra day

**Villa Viola:**

price/ week (price for weeks 25-35, 52-1),

price/ weekend, price/ extra day

**Villa Helmi:**

price/ week (price for weeks 25-35, 52-1),

price/ weekend, price/ extra day

Note for all villas: extra charge for final cleaning price/ person - bedlinen and towels





© Mikko Nikkinen



© Mikko Nikkinen



© Mikko Nikkinen



© Mikko Nikkinen

## MAAMIEHEN MAJAT

Our holiday cottages are in the municipality of Taipalsaari, 27 km from the city of Lappeenranta. Our aim is to provide high-quality accommodation services and offer visitors an unforgettable cottage holiday.

With our additional services, guests have the opportunity to use the smoke sauna or bath barrel. All our guests can use the adjacent barbecue hut at no extra charge.

### ACCOMMODATION

We now have six cottages, four of which are available all year round. Two of the cottages can be rented for the whole of the summer. All cottages enjoy an idyllic location on the shores of Lake Saimaa.

**Number & type of cottages:** In total six. Two cottages, can be rented only in summer. Following four cottages can be rented year-round:

**Sinivuokko:** 80 m<sup>2</sup>, for 7+2 pers.; built in 2005, quietly situated on the shores of lake Saimaa

**Facilities:** Three bedrooms, lounge, mini kitchen, patio, and balcony, sauna with a wood-burning stove, shower facilities, indoor toilet; access to a gazebo and a rowing boat.

**Tunturivuokko:** 65,5 m<sup>2</sup>, for 4+2 pers., built in 1998, situated on the shores of Lake Saimaa

**Facilities:** One double bedroom. There are two beds and three framed mattresses upstairs. Downstairs there is one small bedroom (bed size: 120x200 cm), open-plan living area with a kitchen, a sauna with a wood-burning stove, a shower room, and a toilet; a patio and

a balcony. The cottage's rowing boat can be used free of charge.

**Jalmari:** 80 m<sup>2</sup>, for 6+3 pers., made of traditional round logs and situated in a quiet spot on the shores of Lake Saimaa. Built in 1998 and refurbished and extended in 2009.

**Facilities:** Two bedrooms (for max. 4 pers.), an alcove with a double bed (120 cm), and a sleeping loft; sauna with a wood-burning stove, a shower, two toilets, and a patio. It also has a barbecue gazebo, and guests have access to a rowing boat.

**Tuhatkaunokki:** 79 m<sup>2</sup>, for 4+4 pers., quiet location on the shores of Lake Saimaa. Built in 1998, fully refurbished and extended in 2009.

**Facilities:** One double bedroom (bed: 120 cm), one twin bedroom, sleeping loft (ceiling peak height: about 190 cm) with a double bed and two framed mattresses; sauna with a wood-burning stove, along with a shower room, conservatory, and patio. Outside, there are a barbecue gazebo and an outbuilding that sleeps two in the summer.

### SPA & WELLNESS

Every cottage includes a sauna with a wood-burning stove. All cottages enjoy an idyllic location on the shores of Lake Saimaa. With our additional services, guests have the opportunity to use the smoke sauna or bath barrel.

### Prices:

Rates and commission on request.

**Founded:** Maamiehen Majat was founded in 1982, when we started letting one cottage. We built our second cottage in 1990, and a further three cottages were completed in 1997. Our newest cottage was built in 2005, and in the following year we extended our services by building a traditional smoke sauna and installing an outdoor bath barrel. Two of the cottages built in 1997 were refurbished and extended in 2008.

**Employees:** Small family business employing two people full-time.

**Languages:** English

**Season:** year-round

**Note:** dogs are allowed in some cottages; parking places available; next supermarket in 13 km; bed linen and final cleaning can be ordered separately.

### Contact

Maamiehen Majat  
Arto Kontunen  
Kilkinsaarentie 81  
54920 Taipalsaari  
Tel. +358 (0) 40 586 2053  
[arto.kontunen@luukku.com](mailto:arto.kontunen@luukku.com)  
[maamiehenmajat@gmail.com](mailto:maamiehenmajat@gmail.com)  
[www.maamiehenmajat.com](http://www.maamiehenmajat.com)  
[facebook.com/maamiehenmajat](https://facebook.com/maamiehenmajat)





**Founded:** 1999

**Employees:** 1

**Languages:** English

**Season:** year-round

**Note:** pets are allowed for extra costs; parking places available; next supermarket in approx. 11 km

**Special service for children:** playground

**Winter activities:** skiing, fishing

**Summer activities:** hiking, fishing, beach volleyball

#### Contact

Kiviniemen Mökkilomat

Vesa Kilpi

Hiidenniementie 25

54770 Heituinlahti

Tel. +358 (0) 50 3793 944

[kiviniemenmökkilomat@co.inet.fi](mailto:kiviniemenmökkilomat@co.inet.fi)

[www.kiviniemi.info](http://www.kiviniemi.info)

## KIVINIEMEN MÖKKILOMAT

Comfortable cottages in Savitaipale by the clean and clear lake Virmajärvi, 60 km from Lappeenranta, 200 km from Helsinki.

#### ACCOMMODATION

**Number & type of cottages:** In total 4.

**Sinituuli:** High class, handmade log cottage for 6+4 persons 150 m<sup>2</sup> by the Lake Virmajärvi.

**Facilities:** Kitchen, living room, three bedrooms, two saunas, a fireplace room, a big loft (30 m<sup>2</sup>), shower and toilet, dishwasher, washing machine and a dryer for clothes, air source heat pump, Wi-Fi, TV, floor-heating, Valugrill, two terraces and a rowing boat to use.

**Lumpeenkukka:** Massive, handmade cottage of 68 m<sup>2</sup> in 2-floors for 6+2 persons on the shore of the beautiful Lake Virmajärvi.

**Facilities:** Wi-Fi, air source heat pump. Downstairs: Combined kitchen-living room, one bedroom, WC, shower, wood-heated sauna, soapstone fire-place; kitchen with refrigerator, dishwasher, electric stove, microwave oven and washing machine. Upstairs: Two bedrooms with 2x 120 cm wide beds. Balcony. Outside the cottage there is a separate building with two, electric-heated rooms for 2+2 persons. Used around the year. Down by the lake there is a rowing boat and an outdoor grill. The water by the pier is low and the bottom is sandy.

**Suviranta:** A peaceful 55 m<sup>2</sup> log cottage with a great view to the beautiful lake Virmajärvi. The cottage is suitable for 4+1 persons.

**Facilities:** Wi-Fi, air source heat pump. Electric-heated cottage has a combined kitchen-living room, one bedroom with a low loft; kitchen with a refrigerator, an electric stove with an oven, a microwave oven and a dishwasher; living room sofa can be used as a bed for 2 persons, big fire-place; washing machine, toilet, shower and a big wood-heated sauna. Outside the cottage there is a separate, electric heated room for 2 persons. By the lake there is a covered outdoor grill, a pier and a rowing boat.

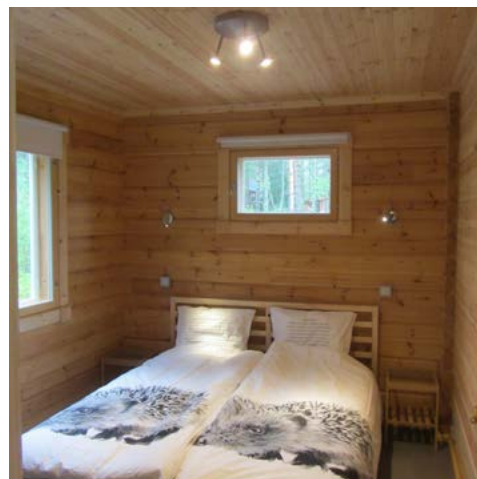
**Poutapilvi:** High quality 68 m<sup>2</sup> cottage in two floors for 6+2 persons by the Lake Virmajärvi.

**Facilities:** Wi-Fi. Downstairs: Combined living-dining room, kitchen with dishwasher machine, refrigerator, oven and microwave oven and washing machine, toilet, shower and electric-sauna. Fire-place, TV, CD-player. Upstairs: 2 separate bedrooms. Upstairs lounge can be separated as a 3rd bedroom. Beside the cottage there is a wood heated, no electrified "summer-sauna" with a dressing room, which can be used as an extra bedroom in the summertime. Rowing boat, a long pier and a grill outside the cottage.

#### Prices:

Price list with consumer rates and commission available to download.





## KOKKIS LUXURY COTTAGES LUUMÄKI

Kokkis luxury cottages Luumäki are located next to one of the cleanest lakes in Finland: Lake Kivijärvi, only 50 km from Lappeenranta. Taavetti is 2-hour drive from Helsinki.

### ACCOMMODATION

Luxurious cottages which all have their own private sauna building, hot tub, private beach, rowing boat and pier. The houses are suitable for a wide range of users. The cottages are stylish and spacious.

**Number & type of cottages:** In total 3 cottages with 4 bedrooms and 1 bedroom in the sauna dressing room. Each cottage can take 10 persons max.

**Facilities:** Fully equipped cottages (dishwasher, washing machine, fridge, freezer, all the kitchen supplies etc.). All cottages have:

A marvelous view to the lake through huge windows. A modern decorated spacious living room with a wood heated fireplace and dining area, which offers enough room for 10 people. A very large veranda around the house, which guarantees sunshine from dusk till dawn. There is of course a BBQ available.

4 double bedrooms, 2 toilets, shower and fully equipped kitchen; TV, DVD and free Wi-Fi, a rowing boat and lot of privacy.

### SPA & WELLNESS

The sauna and hot tub is situated next to the lake. Both are wood heated.

The wood heated sauna is well suitable for larger groups. There is a washing room with shower and separate toilet. A large dressing room with a first class sleeping couch (sofa-bed) for 2 persons,

The dressing room can also be used as a sitting area. It has a wood heated fireplace, a TV.

### Prices:

price/ week - high season (June - August)

price/ week - Christmas

price/ week - New Year

price/ week - low season (all other months)

**Founded:** 2014

**Employees:** 2

**Languages:** English, German

**Season:** year-round

**Note:** dogs are allowed; parking places available; next supermarket in 15 km

**Special service for children:** We have a swing and a sand pit for kids. Also lif vests are available.

**Winter activities:** ice fishing, snow sports

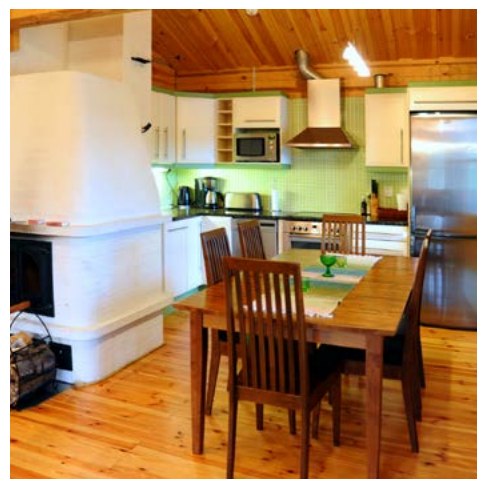
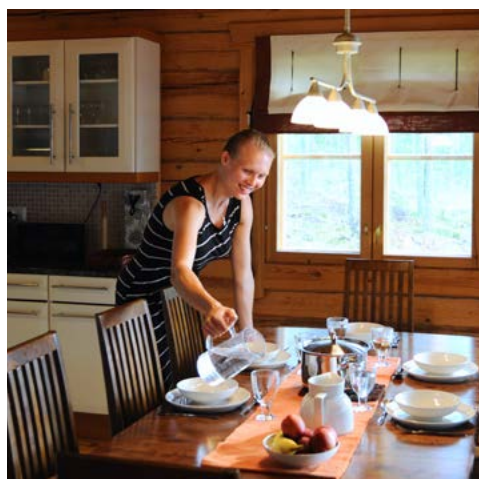
**Summer activities:** swimming, hiking, golf (within 1 hour drive 5 courses), horse riding in the neighborhood

**Other activities:** relaxing and enjoying the beautiful nature and scenery from your own huge veranda.

### Contact

Kokkis Oy  
Ivon Rotteveel (owner)  
Sudensalmi 34  
54500 Taavetti  
Tel. +358 (0) 40 179 4242  
[kokkisoy@gmail.com](mailto:kokkisoy@gmail.com)  
[info@kokkis.com](mailto:info@kokkis.com)  
[www.kokkis.com](http://www.kokkis.com)  
[facebook.com/KokkisOy](https://facebook.com/KokkisOy)  
[twitter.com/kokkisoy](https://twitter.com/kokkisoy)  
[instagram.com/kokkisoy](https://instagram.com/kokkisoy)





**Founded:** 2000

**Employees:** 1 permanent, family and friends working occasionally part-time

**Languages:** English

**Season:** year-round but Fisherman's hut I and II are not available during the winter as they are located on an island and it depends on the winter if the ice road is available or not.

**Note:** dogs are allowed; parking places available; next supermarket in 10-20 km

**Special service for children:** Cabins Syväjärvi and Vasikkahaka have very nice sand beaches for small children to play. There's a lamb farm nearby. Life vests also for small babies available.

**Winter activities:** ice-fishing, cross country and downhill skiing, skating, floating

**Summer activities:** fishing, rowing, canoeing, berry picking, hiking, motor boating, moose hunting (late autumn)

#### Contact

Loma-Väkkärä

Mrs Outi Kauria

Ylä-Väkkäräntie 77

52420 Pellosniemi

Tel. +358 (0) 50 5140 161

[outi.kauria@lomavakkara.fi](mailto:outi.kauria@lomavakkara.fi)

[www.lomavakkara.fi](http://www.lomavakkara.fi)

[facebook.com/lomavakkara](https://facebook.com/lomavakkara)

[youtube.com/channel/UCROQAX9Tm-](https://youtube.com/channel/UCROQAX9Tm-RMkpHEKLdBCktA)

[RMkpHEKLdBCktA](https://youtube.com/channel/UCROQAX9Tm-RMkpHEKLdBCktA)

## LOMA-VÄKKÄRÄ

Loma-Väkkärä's cottages are located in South-East Finland between towns Lappeenranta and Mikkeli, 2.5 hours by road from Helsinki on the shores of Lake Saimaa.

#### ACCOMMODATION

All cottages are in peaceful locations surrounded by relaxing nature and large plot of land each. The waters are clean, clear and fishy. There are all modern conveniences in the cabins, own beaches, saunas, rowing boats and barbecue shelters. 4 of the 6 houses are made of logs from the owner family's own forests.

**Number & type of cottages:** Six individual log cabins by a lake (max 30 m from beach shore), four of them by Lake Saimaa. Two of the Saimaa cabins are exotically on an island, 1 km away from the boat harbor.

**Fisherman's hut I and II:** 4 + 2 pers., 62 m<sup>2</sup>, Lake Saimaa, Lapinsalo Island

**Syväjärvi:** 8+2 pers., 107 m<sup>2</sup>, 2 floors, Lake Syväjärvi

**Lokkero:** 6+2 pers., 117 m<sup>2</sup>, 2 floors, Lake Saimaa

**Nuottakallio:** 4+4 pers., 85 m<sup>2</sup> and a gallery level, Lake Saimaa

**Vasikkahaka:** 4+2 pers., 83 m<sup>2</sup>, Lake Härkäjärvi

**Facilities:** Free Wi-Fi, fridge-freezer, electric stove, electric oven, microwave oven, toaster, coffee machine, composter for organic waste; drinking water on tap, own well; flat screen TV, DVD player; fireplace, firewood; vacuum cleaner, cleaning equipment, rubbish bags; was-

hing machine, clotheshorse. 5 of 6 cabins also have a drying closet for clothes. Rowing boat, pier, local fishing permits free of charge. Life jackets and coats can be supplied upon request at no extra charge.

**Note:** Bed linen, motorboat and personal fishing permits for additional fee possible.

#### RESTAURANTS

No restaurants by the cabin. Distance of the nearest restaurant varies from 5 km to 15 km depending on the cabin.

#### SPA & WELLNESS

1-2 saunas per cabin: Fishermans Huts I and II as well as Vasikkahaka have wood-burning saunas inside the cabin. Syväjärvi has an electric sauna inside the cabin and a smoke sauna on the shore (extra fee). Lokkero 6+2 has an electric sauna inside and a wood-burning sauna by the lakeshore 25 m from the cabin. Nuottakallio has an electric sauna inside and a wood-burning sauna made of very old logs just 15 m from the cabin.

#### Prices:

Consumer rates depend on the season; prices and commission on request.

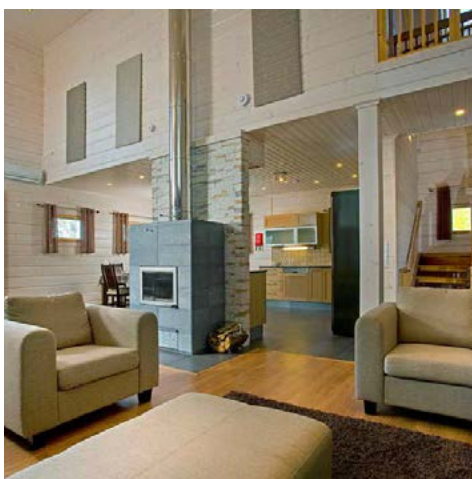
Cabins Lokkero and Syväjärvi:

prices/ week

Cabin Nuottakallio: prices/ week

Cabin Fisherman's hut I and II: prices/ week





## SAIMAA LAKESIDE LUXURY COTTAGES

The Setl Group holding is glad to present to you Saimaa lakeside, a luxury-class cottage settlement in Finland!

Any time of the year, 6 beautiful cottages near-by Russian-Finnish border will guarantee you the most relaxing experience. Just imagine a fairytale-like landscape of Saimaa Lake surrounded by pine forest - piece and quiet.

### ACCOMMODATION

#### Number & type of cottages:

Six cottages in complex Saimaa Lakeside:

1 cottage 148 m<sup>2</sup>

3 cottages 135 m<sup>2</sup>

2 cottages 175 m<sup>2</sup>

Additionally, we have 10 cottages in the complex Tahko hills (ski-resort Tahko).

**Facilities:** Every cottage contains: 4 separate bedrooms (2 double beds, 4 single beds, 2 extra beds), living room, kitchen and dining room with all necessary household appliances, sauna for those appreciating the Finnish way of relaxing; dishwasher and washing machine, drying closet, gas grill on the terrace and a barbeque area nearby the cottage

Cottage rent price includes: linen and final cleaning, consumable materials, Wi-Fi in each cottage, motor boat for your use, bicycle in summer and a sledge in winter, use of lakeside sauna

### RESTAURANTS

No restaurants or bars directly at the cottages but in Imatra.

### SPA & WELLNESS

There is an electric sauna in every cottage and one shore sauna near the cottage.

### ACTIVITIES

Winter activities: sledge in winter, ice-fishing

Summer activities: In the middle of Saimaa Lakeside holiday village: Playground for children and sports facilities; sports and game equipment inventory (football, basketball, tennis, table tennis, trampoline, bicycles); nearby every cottage – own dock! Motor boat for your use

### Prices:

Price list with consumer rates available to download. Commission on request.

**Founded:** 2009

**Employees:** 10

**Languages:** English

**Season:** year-round

**Note:** dogs are allowed; parking places available; next supermarket in 19 km, Christmas and New Year's Day we put a New Year tree in each cottage

**Special service for children:** Playground near every cottage, big children ground in the center of cottage complex. We have small beds and chairs for children.

### Contact

Setl-North Europe Oy

Anna Fedoseeva

Hankasuontie 5

00390 Helsinki

Tel. +7 921 791 3797

[info@setl.fi](mailto:info@setl.fi)

[setl.fi/saimaa\\_lakeside/cottages](http://setl.fi/saimaa_lakeside/cottages)

[facebook.com/SaimaaLakeside](https://facebook.com/SaimaaLakeside)

[instagram.com/saimaa\\_lakeside](https://instagram.com/saimaa_lakeside)

[vk.com/vipcottage](https://vk.com/vipcottage)





**Founded:** 2007

**Employees:** In the office mainly 2, total 4.

**Languages:** English

**Season:** year-round

**Note:** dogs are not allowed; parking places available; 300 meters to the small market which has all essential things needed for a short trip.

**Winter activities:** ice skating on the lake/ or hall. Cross-country skiing; indoor activities like spa, bowling

**Summer activities:** golf, tennis, SUP, swimming in the lake, running, cycling, climbing park, boat trip, mini golf.

#### Contact

Saimaa Gardens

Ari Lötjönen/ Jelena Rannasto

Almintie 8J

53320 Rauha, Lappeenranta

Tel. +358 (0) 50 3060717

[info@saimaagardens.com](mailto:info@saimaagardens.com)

[www.saimaagardens.com](http://www.saimaagardens.com)

[facebook.com/SaimaaGardensOfficial](https://facebook.com/SaimaaGardensOfficial)

[instagram.com/saimaagardens](https://instagram.com/saimaagardens)

## SAIMAA GARDENS

We have several different types of holiday houses. All houses are pretty new and built in 2010 - decade. The size of the houses varies from 52 m<sup>2</sup> to 150 m<sup>2</sup> meters. Every house includes a sauna and fresh decoration. Final cleaning and bedsheets are always included to our prices. Our houses are in the new Rauha holiday territory near to all services of the area and lake Saimaa.

#### ACCOMMODATION

**Number & type of apartments:** 18 apartments in total.

**10 Marina Village Apartments:** 78 m<sup>2</sup>, for 2+2 persons. Two bedrooms and a bed sofa.

**Marina Village 6F:** 74 m<sup>2</sup>, for 4 persons. Two bedrooms and a normal large sofa.

**Marina Village 6C:** The smallest house, 52 m<sup>2</sup>. It has one bedroom and can accommodate 2 persons.

Marina Village 6 houses are our newest houses which have been in use since 2015. Located in a very good place just like Marina Villages 1-5.

**Kiurunniitty A:** 92,5 m<sup>2</sup>, for 6+2 persons. Three bedrooms and a sofa bed.

**Kiurunniitty B:** 80,5 m<sup>2</sup>, for 4+2 persons. Two bedrooms and a sofa bed.

**Kiurunlehto:** 104 m<sup>2</sup>, for 6+2 persons. One bed sofa and four bedrooms.

**Kiurunpuisto:** 139 m<sup>2</sup>, for max. 10 persons

**Villa Gardens:** 135 m<sup>2</sup>, for max. 10 persons

**Saimaan Valo:** 150 m<sup>2</sup>, for max. 10 persons

**Facilities:** All basic things needed to live in a house.

#### RESTAURANTS

Less than one kilometer away from the houses there are six restaurants and bars.

#### SPA & WELLNESS

In the area, close to all apartments there is a Spa and Sauna area. Also other wellness services are offered if interested. We give spa tickets to our clients for free. The spa includes spa & sauna world. Other wellness services must be bought separately from Holiday Club.

#### Prices:

Price list with consumer rates available to download. Commission on request.





## ASKON JA MAIJAN LOMAMÖKIT

Asko and Maija holiday cottages are by the great lake Saimaa in Taipalsaari. There are five year-round cottages where you can have relaxing holiday. Cottages are located in peaceful and beautiful countryside where you can enjoy Finnish nature and four seasons.

### ACCOMMODATION

**Number & type of cottages:** In total 5.

4 Family cottages: max. 5-7 persons

**Sointula:** 58 m<sup>2</sup>, terrace 24 m<sup>2</sup> two-storeyed cottage, renovated in 2004.

**Facilities:** electricity, well, sauna, cold/ warm water, 2 toilets, open fireplace, electric cooker with oven, dinner service, dishwasher, micro, coffee maker, TV and radio, vac, canopied grill, rowing boat, pier, parking area next to the cottage, heating.

**Kotiranta:** 46 m<sup>2</sup>, terrace 24 m<sup>2</sup>; log cabin, renovated in 2009.

**Facilities:** great room with electric cooker and oven, fridge, micro, coffee/ water maker, beds for 5 pers., cold/ warm water, TV, toilet, sauna, loft, fireplace, sauna (wood-heated), grill, pier, rowing boat, shallow child-safe beach

**Päivölä:** two-storey house, renovated in 2016. It has beds for 7+1 persons.

**Facilities:** open kitchen/ living room area with wood-burning oven and sauna, bathroom, toilet and porch with big terrace. Downstairs there are two bedrooms. One room is for single

use and one has double bed. Upstairs there is a bedroom for four persons and a lounge with a TV and sofa. At the beach there is rowing boat, pier and grill available.

**Suurisaimaa:** 25 m<sup>2</sup>, terrace 7 m<sup>2</sup>; log cabin (finished in 1986)

**Facilities:** small kitchen cold/ warm water, electric cooker, dinner service, open fireplace, grill, rowing boat, sauna

**Villa Rantatupa:** max. 14 persons

**Facilities:** five bedrooms, axe-carved great room with an old-fashioned atmosphere; second great room downstairs with wood-burning oven

### RESTAURANTS

Oven made meals are one of the most significant offerings at Rantatupa. The ingredients of our food we find from our own farm. We also favor local and fresh offerings.

### SPA & WELLNESS

Wood-heated lakeside sauna

### Prices:

Rates and commission on request.

Family cottages: prices/ week

Villa Rantatupa: prices/ week

**Founded:** 1996

**Employees:** 2

**Languages:** English

**Season:** year-round

**Note:** dogs are not allowed; parking places available; next supermarket in 15 km

### Contact

Asko ja Maija Lomamökit

Asko and Maija Saikko

Suolahdentie 461

54930 Levänen

Tel. +358 (0) 40 5075842

[a-m@rantatupa.net](mailto:a-m@rantatupa.net)

[www.rantatupa.net](http://www.rantatupa.net)



## Lappeenranta & Imatra region



Leverage from  
the EU  
2014–2020



REGIONAL  
COUNCIL OF  
SOUTH KARELIA



Produced by NordicMarketing for gosaimaa.com.  
Changes and errors excepted.