



FINLAND 2018

SPARKS YOUR SOUL. ★





NORDICMARKETING: TOURISM MARKETING FOR NORTHERN EUROPE

WHO WE ARE & WHAT WE DO

NordicMarketing is a tourism marketing agency specialized in Northern Europe. We offer high-quality products from Northern Europe including detailed information about services, net rates for travel trade, direct contact details and diverse visual material for tour operators and incentive agencies.

PRODUCT MANUALS

NordicMarketing's product manuals are valuable working documents for product managers and decision makers of the tourism industry. We gladly present our product manuals personally to you as part of our sales tours.

issuu.com/nordicmarketing

SALES VISITS

Every year we personally visit numerous tour operators to learn about their current product requests, news and any customer feedback and to present our latest product manuals.

EDUCATIONAL TOURS

Every year NordicMarketing organizes educational tours to the destinations in Northern Europe. Only tour operators we met before in person on sales visits/ tours are invited to our fam trips.

PRODUCTS ONLINE

NordicMarketing offers numerous products from Northern Europe for travel trade online. Of course, direct contact information of service provider and high-quality visual material for catalogue production and web presence are available online as well.

nordicmarketing.de/nordicproducts

NEWSLETTER

We monthly send our newsletter with products and tourism-related news from Northern Europe to approximately 1,100 tour operators throughout Germany, Switzerland and Austria.

TEAM GERMANY

Jan Badur
Managing Director
Marline Geisler
Marketing Manager
Nina Müller-Plückthun
Marketing Assistant
Kristin Christmann
Marketing Manager

TEAM FINLAND

Greta Tanskanen
Managing Director
Suvi Ahola
Key Account Manager

SOCIAL MEDIA

Facebook
facebook.com/nordicmarketing
Instagram
instagram.com/nordicmarketing
Pinterest
pinterest.com/nordicmarketing
Twitter
twitter.com/nordicmarketing

Contact

NordicMarketing GmbH
Alte Bahnhofstr. 56a
44892 Bochum
Fax +49 234 54 66 05 59
www.nordicmarketing.de



Jan Badur
Managing Director
Tel. +49 234 54 66 05 55
jan.badur@nordicmarketing.de



Marline Geisler
Marketing Manager
Tel. +49 234 54 66 05 52
marline.geisler@nordicmarketing.de



LEVI IN FINNISH LAPLAND

Experience the clean nature, the Northern Lights and the magical midnight sun. Silence, pureness and unique natural environment, unparalleled in the world – welcome to Levi and Finnish Lapland! In Levi, you will enjoy eight seasons, instead of just four.

UNIQUE HOLIDAY DESTINATION

Levi is a unique, all-year round holiday destination in Lapland. Levi destination offers a wide range of accommodation and activities. It is also an internationally renowned FIS approved ski location with World Cup level competition. Levi is in Northern Finland, 170 km north of the Arctic Circle. As part of Scandinavia, Finland is a safe destination. Its neighboring countries are Sweden, Norway and Russia.

EASY ACCESSIBLE

Levi is an easy-to-reach destination: only 15-minute drive from Kittilä airport (KTT) and daily connecting flights from Helsinki, which is just a little over an hour flight time away.

DIVERSE NATURE AND ACTIVITIES

The greatest feature about Levi is its variety of nature and activities available during the different seasons.

Levi offers a real white winter with guaranteed snow from November to May, Northern Lights and Polar Nights, a wide range of outdoor activities, the pure, wild nature combined with world-class services in a modern resort.

WIDE RANGE OF SERVICES

Easy access and wide range of services. In Levi everything is easily available and within close proximity. Restaurants, bars, stores, souvenir shops, the spa centre, beauty treatments, gym and exercise classes are all within walking distance from the hotels and accommodations in central Levi. There is plenty to choose from when looking for a place to stay: high-quality hotels, silver pine log cottages and luxurious igloos with glass ceilings.

SURROUNDED BY NATURE

Nature is always around the corner in Levi. Within a 15-minute drive you can find sublime wilderness and along the way you can observe reindeer grazing. You can discover the unspoiled beautiful nature hiking with a guide, biking or simply by going fishing. Take a panoramic ride in the Gondola cabin lift to the very top of Levi. The landscape with the surrounding fells and lakes is breathtaking.

YEAR-ROUND ADVENTURES

Experiences and adventures all year round. Levi is a year-round destination. In summer Levi is blessed by the phenomenon of the magical midnight sun. Since the sun doesn't set you can, for example, play golf in the middle of the night! You can also go berry picking in the woods – pure superfood for free. In the beginning of September the leaves begin to change their colour creating a spectacle painting the fell scenery with red, orange, yellow and brown.

WINTER ACTIVITIES

You'll find a large variety of activities in Levi e.g. from our winter weekly program your clients can easily choose their daily activities.

Winter program possibilities:

Northern Lights programs, visits to ice hotels, ice-fishing, ice sculpting, photographing tours, snowmobile safaris, winter rally driving, ice karting and snow cat trip, reindeer and husky safaris, horseback riding and sleigh rides, snowshoeing, kick sledging, skiing, visits to Santa Claus, Lappish shaman and Elfes hide-away, Finnish sauna experience and ice swimming, helicopter flights, hot air balloon flights, paragliding flights, windsurfing, winter laser world -games, wilderness skills program, wine tasting, wilderness cooking course, Lappish ceremony and kota dinners

SUMMER ACTIVITIES

Fishing, trekking, canoeing, rafting, biking (enduro, downhill, fat and mountain biking), husky park visits, reindeer farm visits, theme parks; Activity park, Forest Park, Bike park and Children's park, photographing tours, cooking courses, berry and mushroom picking and forest excursions, 18-hole Golf course, SUP-paddling, Gondola cabin lift sightseeing, Finnish sauna experience and swimming, pontoon cruise on river Ounasjoki, Atv safaris, horseback riding excursions and several day safaris, jet ski safaris

Number of hotels: 7

Number of cottages: 2,500

Capacity: 25,000 beds

Slopes: 43

Skiing tracks: 230 km

Snowmobile trails: 866 km

Hiking trails: 80 km

Mountain Biking trails: 78 km

Services and activities:

Samiland exhibition center, wellness programs (e.g. spa centre, sauna yoga & hot yoga studio), several art museums and galleries, restaurants, bars, after ski, nightlife, stores, souvenir shops, concerts & artists, gyms and exercise classes

New activity program for Northern Lights Season (starting in August):

Aurora chase, Trip to the Arctic Ocean Norway, Excursion to National Park, Canoeing under the Northern Lights, Aurora chase (photographing tour) Aurora floating on a lake, a bucket of berries (berry picking excursion), cooking work shop, horseback riding, hiking and fishing trips etc.

Week programs in Levi:

Week programs are running all year round, except in May.

More about the week programs on the website: www.levi.fi

Contact

Levi Destination Marketing & Sales,

Levi Tourist Office

Mrs. Maija Palosaari

Myllyjoentie 2, 99130 Levi

Tel. +358 (0) 20 7352 630/

+358 (0) 40 560 6316

maija.palosaari@levi.fi

levi@levi.fi

www.levi.fi

facebook.com/levilapland

twitter.com/levi_lapland

instagram.com/levilapland

youtube.com/user/VisitLevi



© Kittilä municipality/ Miika Sirkkiä

THE VILLAGE OF KITILÄ

SERVICES IN KITILÄ

Several shops and special stores are to be found in the Kittilä village centre, as well as local food and culture. Municipal and government offices are located here, along with the library. The village also features various indoor recreational facilities, as well as modern, well-equipped sports hall, the Agnico Eagle ice-hockey arena and high quality soccer field, and, in the winter, there are cross-country skiing tracks in and outside the village. The cross-country skiing track doubles as a running and hiking trail during the snow-free months. There is also an international airport just a few kilometres north of the village.

PLACES OF INTEREST

The wooden church in Kittilä has been designed by Carl Ludwig Engel and it was built between 1829-31. The baroque-style pulpit dates to 1687. Local history can be viewed at the museum of local history and culture in the Pakatti district, which is open in summertime. Swimming is popular in the summer. Right in the town centre the Einari Junttila Art Museum and the home of Kalervo Palsa, a local artist, are worth a visit. The Karinnokka birdwatching tower and, next to it on the bank of the Ounasjoki river, the Karinnokka shelter, where people can picnic or rest, attract birdwatchers and trekkers.

EVENTS

There are lots of events in Kittilä running throughout the year. One of the main events is the traditional summer market in Kittilä centre organized two weeks after Midsummer. It has been held since the 1600's. Traditionally the market was a place to sell food, tools, make trades, dance and meet people. The market has shaped into modern summer event, but in Kittilä a certain traditional spirit has been preserved.

MORE ABOUT KITILÄ REGION

The village of Kittilä offers naturally beautiful surrounding to visit, many different kinds of recreational activities and an outdoors lifestyle. There are lots of ways to spend your free time – outdoor activities, excursions, tours, cultural offerings and sights – and many different kinds of accommodation. The main village Kittilä and its surrounding smaller villages give you the peace and quiet of the countryside combined with a close-knit village community, together with several annual events organized with the help of active residents. The villages offer a peaceful and safe environment to visit, near the developing international centre that is the activity resort of Levi.

There are not four, but eight seasons of the year in Kittilä, each with its own mood, colours and scenery: ranging from the dark of the polar night to the glorious midnight sun, and from

the peak of a buzzing, flowery spring to the dazzling hues of autumn. Visitors and local residents alike are captivated by the magnificent highland fells and the grand Ounasjoki river that runs through the region and shapes its scenery. The municipality of Kittilä spans over a huge area: between its northernmost and southernmost villages lie more than 140 kilometres of sweeping vistas and breathtaking scenery.

The municipality of Kittilä includes Levi, one of the most popular year-round ski and activity resorts in Finland, and features Europe's biggest gold mine. Many destinations can be reached from its international airport through its flight connections year-round. In the tourist season, there are flights arriving daily from Finland and the rest of Europe. Internationality plays a significant role in the economic life of the Kittilä municipality, which lies above the Arctic Circle. There is also a high density of businesses here: roughly 600 enterprises in the municipality give it one of the highest commercial densities in Finland. The development of tourism and mining in Kittilä has created a modern and international atmosphere in the municipality, yet the traditional way of life still exists in many of the region's villages, also remaining present in their culture, art and events. There are many artists' homes and other interesting sights to see in the area.

Contact

Kittilän Kunta/ Municipality of Kittilä

Veli-Matti Hettula

Valtatie 15, 99100 Kittilä

Tel. +358 (0) 40 487 7556

veli-matti.hettula@kittila.fi

kirjaamo@kittila.fi

www.kittila.fi

facebook.com/kittilankunta

[youtube.com/channel/UC2laGFs1PKsLV-](https://youtube.com/channel/UC2laGFs1PKsLV-To3k1EWJcQ)

[To3k1EWJcQ](https://youtube.com/channel/UC2laGFs1PKsLV-To3k1EWJcQ)

Number of hotels: 1

Number of cottages: 14

Capacity: 180 beds

Skiing tracks: 80 km

Hiking trails: 10 km

Population: about 3,000

Location: The village of Kittilä is located in the geographic middle of the municipality. From here, it is about 150 km to Rovaniemi and 960 km to Helsinki. The Swedish border at Kolari is about 76 km away and the Norwegian border at Enontekiö roughly 190 km away. It is about 86 km to the town of Sodankylä.

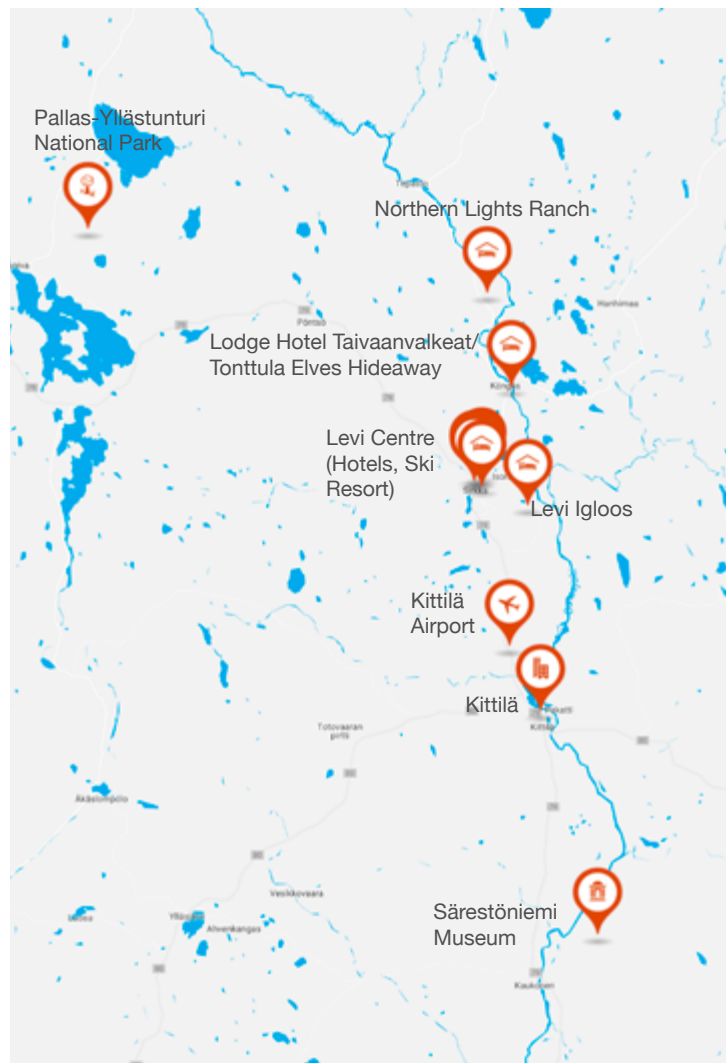
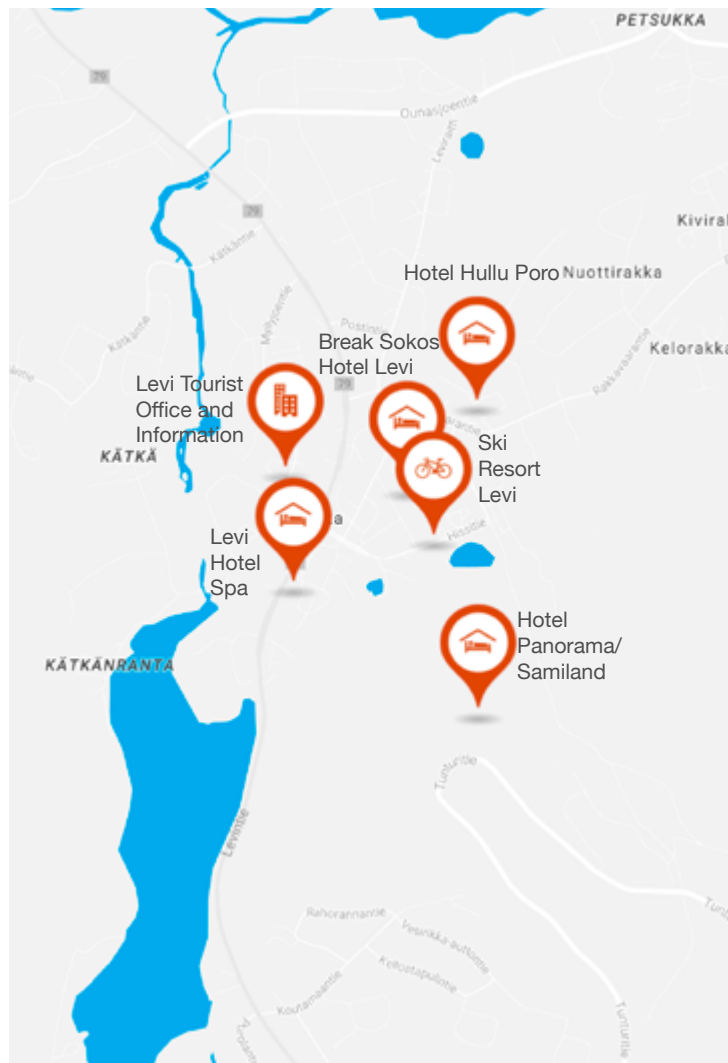
Winter activities: sports hall, ice-hockey rink, cross-country skiing tracks

Summer activities: running and hiking trail, swimming, football and sport centre

Other activities: Several shops and special stores, local food and culture, library, indoor recreational facilities, church, museum of local history, Einari Junttila Art Museum, artist home of Kalervo Palsa, Karinnokka birdwatching tower and shelter

Airport: Kittilä Airport

Train station: Rovaniemi (150 km), Kolari (70 km)



ACCESSIBILITY & TRANSFER OPTIONS

Airport: Kittilä (KTT), 15 km/ 15 min. drive to Levi

Airlines - Season & Frequency:

Year-round: Finnair is flying daily during snowless season from Helsinki to Kittilä. Flight time is 1 hour and 20 min.

Winter season:

Finnair: Once a week from London, Paris and Zurich.

Norwegian: 6-weekly flights during the high season from Helsinki.

SAS: 1-4 flights per week according to the season from Helsinki.

Lufthansa: Twice a week from Munich.

Germania: Twice a week from Düsseldorf.

Monarch: Twice a week from London (Gatwick) and once a week from Manchester.

Transfer options from airport: Public transport: Pekkalan Tunturilinjat, taxis, private transfers and car rental

Contact for airport transfers:

Pekkalan Tunturilinjat: tunturilinjat@levi.fi, www.tunturilinjat.fi

Levi taxi service: Tel. +358 (0) 200 99200

Private transfers (mini buses and buses): Levi Destination Sales levi@levi.fi, Tel. +358 (0) 16 639 3300

Car rental: Hertz, Europcar and Sixt rent a car

Train station: Kolari (80 km) and Rovaniemi (170 km)

It is possible to take the car on the train and drive the final stretch from Kolari or Rovaniemi to Levi.

Transfer options from train stations: Public transportation from Kolari: Pekkalan Tunturilinjat; public transportation from Rovaniemi: Eskelisen Lapin Linjat and Gold Line; private transfers, car rental

Contact for train station transfers:

Pekkalan Tunturilinjat: tunturilinjat@levi.fi, www.tunturilinjat.fi

Eskelisen Lapin Linjat: info@eskelisen.fi, Tel. +358 (0) 16 342 2160

Gold Line: Tel. +358 (0) 16 334 5500

Private transfers (mini buses and buses): Levi Destination Sales levi@levi.fi, Tel. +358 (0) 16 639 3300





© Juha Kalaoja



© Hannele Alakulppi



© Seija Olkkonen



© Seija Olkkonen

Established: 1938/ 2005

Area: 1,020 km²

Awards: Rewarding in best practice in Sustainable Travel & Tourism, World Travel & Tourism Council Tourism for Tomorrow Destination Award 2017 Finalist

Service: Year-round services. Campfire sites, cafés, lean-tos and open huts, wilderness, reservation, and rental huts. Nature and culture exhibitions, presentations, guided tours, maps and books. Three Visitor Centres are ideal spots for day trips and assist in the planning of the trip and direct the visitors to the best destinations. Services of cooperating partners for the national park are also available.

Trails: Marked summer hiking trails (350 km), skiing trails (over 500 km). There are 17 marked nature trails (1-17 km), four long hiking trails (50-72 km), the Fell Lapland trail network; summer biking routes 450 km

Contact

Pallas-Yllästunturi National Park
Ritva Saarensalmi
Tunturintie 54, 95970 Äkäslompolo
Tel. +358 (0) 40 357 2553
ritva.saarensalmi@metso.fi
www.nationalparks.fi/pallas-yllastunturi
facebook.com/PallasYllastunturinKansallispuisto
twitter.com/TunturiLappi
instagram.com/finnishparks
youtube.com/user/Mhlpviestinta

PALLAS-YLLÄSTUNTURI NATIONAL PARK

Pallas-Yllästunturi National Park is the third biggest and oldest national park in Finland. It protects most of the fells and the taiga forests and peatland nature in Western Lapland.

Pallas-Yllästunturi National Park is a member of the EUROPARC Federation - working together for European Protected Areas.

NATURAL ATTRACTIONS

Fells with scenic viewpoints, ravines and herb-rich forests, holy places like "saivolakes" and rocks, remains of volcanos, crystal clear lakes and rivers, peaceful historic places with marks of ancient life offer amazing variety of places to visit.

The vegetation is a wonderful sample of Lapland's forest and mire landscape at its best. Due to the altitude differences and various rock types, the nature is very diversified. The area has priceless important old-growth forests with decaying trees and mires, which are in their natural state. There is also an exceptional abundance of animal and bird species. Of the large carnivores, the Brown Bear is a permanent resident. The Moose has a habitat in the park as well the Pine Martin and the Otter. The Snow Bunting, the emblem of the park, the Ptarmigans and Willow Grouses, Siberian Jays and Tits are typical birds.

VISITOR CENTRES

Three Visitor Centres offer information about the variety of the national parks' nature, its flora and fauna. Starting points for trails are generally located in villages and guided from tourist information at Levi. Most of the scenic spots in the national park are also easily reached by car.

TREKKING

Trek from hilltop to hilltop from lodge to lodge through the arctic fells along Finland's first hiking trail. Here you can enjoy hiking or skiing through the wilds, but still find welcoming lodgings for comfortable overnight stays in historic Lappish villages. This part of Lapland has the purest air in the world. Find passion of nature. Here the sun shines through the night in summer and Northern Lights in winter.

MOUNTAIN BIKING

In Pallas-Yllästunturi National Park biking is permitted to designated routes with a few exceptions. Biking is prohibited due to nature conservation or safety reasons at some trails. (the Palkaskero Circle Trail, the Tuomikuru Ravine the Pirunkuru Ravine, and the Kellostapulininkuru Ravine.) The most suitable biking trails are the ones particularly made for biking, such as the Ylläs - Levi Mountain Biking Trail (50-60 km). A part of the biking trails is open year-round, also in winter.



SÄRESTÖNIEMI MUSEUM

The Särestöniemi Museum in Kaukonen, Kittilä, displays the art and working environment of Reidar Särestöniemi (1925-1981), who was the best-known Finnish artist and the most remarkable Lappish artist of his time.

THE WORLD OF ARTIST REIDAR SÄRESTÖNIEMI

Särestöniemi Museum by the river Ounas is a unique combination of art, architecture, nature and history. It tells the story of how a farmer's boy, Reidar Särestöniemi became an internationally successful painter as the Lapland's answer to Picasso. Särestöniemi got his inspiration from the surrounding nature. The spring flowers bloom in his paintings, the midnight sun is glowing red, the frosted birches stand in the glimmering light of a winter's day. The willow grouse represents the vulnerable side of the artist, whereas the embracing bears and seals symbolise love.

The Museum environment consists of several buildings. The family farm from the 19th century represents the traditional way of building in the North of Finland, whereas the wooden gallery and the studio, both designed in the 1970's by the acclaimed Finnish architects Reima and Raili Pietilä, join the tradition of modern Finnish architecture and its ideal of harmony with the surrounding environment.

The Museum is protected, defined as culturally and historically important built heritage. The Museum office building included a café and a museum shop.

Season: 02.01. - 29.12., closed on Sundays, Mondays and public holidays

Duration: guided tours between 1-1.5 h

Languages: English

Participants: starting from 10 pax, groups smaller than 10 on request

Services included: Tickets to the museum, tailored guided tour, coffee and homemade bun

Optional services: lunch, for example salmon soup

Provider: Särestöniemi Museum

Prices:

Consumer rates, commission on request.

price for a group with 10-15 pax

price for a group with 16-20 pax

price for a group with 21-25 pax

price for a group with 26-35 pax

price for a group with 36-45 pax

price for a group with 46-55 pax

Founded: 1985

Employees: 5

Languages: English

Season: year-round

Contact

Särestöniemi Museum

Anne Koskamo

Särestöntie 880, 99110 Kaukonen

Tel. +358 (0) 40 136 1112

anne.koskamo@sarestoniemenmuseo.fi

info@sarestoniemenmuseo.fi

www.sarestoniemimuseo.com

facebook.com/sarestoniemimuseo

instagram.com/sarestoniemimuseo



Ski Resort Levi

Levi Ski Resort Ltd is the leading ski resort in Finland with year-around services. Our location in Lapland offers midnight sun, pure air and relaxing holidays. The product catalogue consists of sporty summer activities like biking, adventures, disc golfing and panoramic lift runs. In winter we offer ski passes, international ski school, rentals and International Brand Stores. The main customer groups are families, groups of friends and colleagues. Levi is a FIS Alpine World Cup resort.

Founded: 1974

Employees: 60-210

Languages: English

Season: year-round

Types of activities offered: alpine skiing, cross-country skiing, biking, Adventure Park, Disc Golf Park, Down Hill Biking Park and Enduro trails

Contact

Levi Ski Resort Oy Ltd

Tarja Nikkinen

Hissitie 8, 99130 Sirkka

Tel. +358 (0) 20 796 0200

leviskiresort@levi.fi

www.levi.fi

facebook.com/LeviSkiResort

twitter.com/SkiLevi

instagram.com/leviskiresort_lapland

SKI RESORT LEVI

LAPPISH STYLE ADVENTURE PARK

Adventure Park charms you with high ropes courses, flying with zipline marathon and crazy basejump. This centre of adventures is located next to a fell pond and offers several courses from easy ones to challenging ones. 2 training courses with platform heights of 1.5 to 5 meters. 2 adventure courses of which the higher one goes to 8 meters. 3 ziplines between the elements.

Marathon consists of ten ziplines and the longest one is over 100 meters long. On your way you will meet Santa's Cabin - this time above all at height of 10 meters. The total length of the marathon is 888 meters.

Basejump is for those who have courage enough to step over emptiness. You climb up to a tower of 12 meters dressed up with harness to take the crucial step.

You are dressed up with safety equipment (harness, helmet and gloves) at rental of Activity Park. Staff instructs every adventurer on safety matters before they get on the courses and the rope courses. Courses are suitable for all adults and children (min. 110 cm) with basic physical condition.

Season: June-September (on request October, Christmas/ New Year, February-May)

Duration: 2 h. **Languages:** English

Participants: 1-100 pax, min. age 6 years

Services included: Harness, helmet, gloves

Optional services: coffee or lunch break, ren-

ting mountain/ downhill bikes or equipment for disc golfing or mini-golfing

Prices: Rates for Adventure Park on request.

LAPPISH VIEW FROM A CABIN LIFT

Gondoli2000 cabin lift runs with a convenient speed along the western side of fell Levi going as high as 20 metres above the ground. The altitude difference between upper and lower stations is 302 meters. The sightseeing tour takes about 20 minutes and it is possible to get out of the cabin at the top to wander around the fell. Interesting visiting places are a renovated restaurant Palovartija with terrace and a Peak Trail for sightseeing and picnic. The 600-meter Peak Trail goes clockwise around the very top of fell and is suitable also for persons on wheel chair. In addition to breath taking views to western Lapland it offers sitting areas and a fireplace for a picnic. Another cabin lift runs from the village centre to the top of Front pistes, next to Hotel Panorama and Levi Summit congress center.

Season: June-Sept. (October on request)

Duration: 20 min. **Languages:** English

Participants: 1-100 pax, min. age 6 years

Services included: cabin lift ride

Optional services: coffee or lunch break, adventure park, renting bikes or equipment for disc golfing and mini-golfing

Prices: Rates for cable cars on request.



LAPLAND SAFARIS LEVI

Since 1982 Lapland Safaris has been working closely with tour operators and travel agencies around the world to bring winter and summer unique experiences in Lapland for their clients.

SERVICE FOR GROUPS AND INDIVIDUALS

From the beginning, we have been working with groups of all sizes, but keeping in mind that every client is unique, and they all deserve personal experiences. We do arrange services for individual travelers coming to Lapland, and we have guaranteed departures from 2 participants from most of our winter and summer activities. Beside our weekly programs with guaranteed departures, we tailor made programs for all kind of groups.

SUMMER AND AUTUMN SEASON OFFERS

During the summer and autumn, our weekly program includes hiking under the midnight sun, scenic fatbike excursions and visits to a husky farm. You can also enjoy a traditional day in a Finnish summer cabin in the wilderness.

An enjoyable and relaxing biking trip in the beautiful nature of Levi Fell is suitable for everyone and will give you the chance to experience some of the prettiest spots of Levi. You will drive together with your guide along peaceful roads and forest paths and hear stories of the local nature and life in Lapland.

During the midnight sun trip to a Finnish summer cabin you will experience the local way of

life in Lapland, and the treasures of Lappish wilderness. We will spend a relaxing evening, under the midnight sun heating the traditional wood heated sauna, collecting fresh natural spring water, making a fire and evening snack together and listening to the fascinating stories of the Lappish nature.

You can experience the midnight sun also during and enjoyable and relaxing hiking trip in Levi. This hike is suitable for everyone and will give you the chance to experience the phenomenon of the Midnight Sun which is visible only above the Arctic Circle. This trip will include a snack made by the open fire and a toast to the Midnight Sun at Midnight.

A husky safari in the winter is truly a thrilling experience. During the summer, you have a chance to visit a husky farm and meet with the cute Arctic Sled dogs that are enjoying their well-earned summer holiday. You will have a chance to get up close to the dogs and hear fascinating stories of their lives throughout the year, and how they love their work during the winter.

WINTER SEASON OFFERS

During the winter, we offer various activities and excursions on daily basis; snowmobiling, reindeer and husky safaris, snowshoe trips, aurora hunting tours.

Our guides are happy to share their wide knowledge of Lapland and its nature as well as their expertise in the wide range of activities.

Founded: 1982

Languages: English

Season: winter: December-April, summer: June-August

Week program: available

Types of activities offered: reindeer, husky, snowmobile, snowshoe walking, icehotel/ igloo, northern lights tours, fishing, hiking, biking, canoeing/ kayaking

Transfer options: snowmobile transfer from airport (min. 10 pax).

Contact

Lapland Safaris Levi

Mariika Tomminen

Keskuskuj 2

99130 Sirkka

Tel. +358 (0) 16 331 1200

mariika.tomminen@laplandsafaris.fi

levi@laplandsafaris.fi

laplandsafaris.com

facebook.com/LaplandSafarisLevi

instagram.com/laplandsafaris

twitter.com/laplandsafaris



Summer Weekly Program 2018

Season: 18.06.2018 – 26.08.2018 (valid for all activities unless differently stated)

Reservations: Bookings by 16:00 h on the day before the activity to Levi Tourist Information and Booking Office:
Tel. +358 (0) 16 639 3378, levi.info@levi.fi or directly from the levi.fi web page.

Participants: min. 2 people

Note: There are also lots of other activities available on request for any day of the week.

Prices: Consumer rates and commission on request.

Location: Most of the programs depart from Levi centre and few from the near by area.

Weekly Program For Northern Lights Season 2018

Season: 27.08.2018 – 30.11.2018 (valid for all activities unless differently stated)

Reservations: Bookings by 16:00 h on the day before the activity to Levi Tourist Information and Booking Office:
Tel. +358 (0) 16 639 3378, levi.info@levi.fi or directly from the levi.fi web page.

Participants: min. 2 people

Note: There are also lots of other activities available on request for any day of the week.

Prices: Consumer rates and commission on request.

Location: Most of the programs depart from Levi centre and few from the near by area.

Contact

Levi Destination Marketing & Sales, Levi Tourist Office

Maija Palosaari

Myllyjoentie 2, 99130 Levi

Tel. +358 (0) 20 7352 630/

+358 (0) 40 560 6316

maija.palosaari@levi.fi

levi@levi.fi

www.levi.fi

facebook.com/levilapland

twitter.com/levi_lapland

instagram.com/levilapland

youtube.com/user/VisitLevi



SUMMER WEEKLY PROGRAM 2018

MONDAY MAGIC OF TÖLT

One hour riding excursion. 'Tölt' is a pleasant gait, where the rider sits as if in an armchair. This is something that must be experienced. No previous experience is required. Hot beverages and cookies are served during this excursion. Rider's maximum weight 90-100 kg. Children minimum age 12 years, unless they have previous experience of riding treks.

Duration: about 1 hr. **Starting time:** 9:45 h

Price: Price per person.

CANOEING ON NORTHERN LAKE

Once we've practiced the handling of the kayak, we paddle along the beautiful northern lake and enjoy the spectacular scenery of nature. Please take spare warm clothing with you.

Duration: about 2 hrs. **Starting time:** 10:00 h

Price: Price per person.

FOREST CLIMBING

Climbing will take place in a typical Lappish pine forest through ropes and climbing elements attached to the trees, several meters above ground level. The track includes for example wooden and rope bridges, stairs and tunnels. This activity requires balance, concentration, coordination and some strength! Although the track might feel challenging, climbing is a safe and rewarding activity. Our staff will instruct all participants on safety matters and provide the needed equipment: helmet, safety harness and gloves. Ankle supporting shoes are required. Minimum height 130 cm.

Duration: about 2 hrs. **Starting time:** 10:15 h

Price: Price per person (price includes guidance and safety equipment).

SUP-SAFARI

Stand up paddling (SUP) is paddling on a big surf board, while standing on it. Whilst paddling, you can enjoy the beautiful sights of our summery fells in the horizon and you don't have to worry about the cold weather, because you will be provided with neoprene clothing and safety vest.

Season: 01.06.2018 – 26.08.2018

Duration: about 2 hrs. **Starting time:** 14:00 h

Price: Prices for adults and children (under 12 yrs.). Transfer included.

TUESDAY IN THE BOSOM OF THE FELS ON ICELANDIC HORSES

A four (4) hour Icelandic horse trek into beautiful Lappish Nature around Levi. The horses are small, cute and charming, yet strong, tough and sure-footed. No previous experience is required. Hot beverages and cookies are served during this excursion. Rider's maximum weight 90-100 kg. Children minimum age 12 years, unless they have previous experience of riding treks.

Duration: about 4 hrs. **Starting time:** 9:45 h

Price: Price per person.

SWING THE PADDLES

A guided atmospheric paddle expedition surrounded by the beautiful nature of Levi. At first, we will get to know the kayaks with a guide,



then we start our trip and canoeing along the northern rivers. We will also enjoy Lappish campfire coffee and special tapas. Please take spare warm clothing with you.

Duration: about 3-4 hrs. **Starting time:** 10:00 h
Price: Price per person. Transfer included.

TRADITIONAL DAY IN A FINNISH SUMMER CABIN IN THE WILDERNESS

During this excursion you will have the chance to experience the beauty and importance of the Lappish nature. As well as learn some fascinating new wilderness skills! After a boat ride, we will spend a relaxing day at the wilderness cabin; fishing, picking seasonal berries or mushrooms, collecting fresh natural spring water, making a fire and lunch together. There is even the chance to take a refreshing dip in the lake!

Season: 01.06.2018 – 31.08.2018

Duration: about 5 hrs. **Starting time:** 09:45 h
Price: Prices for adults and children (4-14 yrs.). Transfer included.

SUMMER WALK WITH THE ELF IN THE YELLOW DRESS

You will get to know the secrets of Elves Hide-away with one clever elf. See the barns in the courtyard and smell the Lappish power herbs in the garden. In the Magical Forest, you will see the wonders of nature and find your way to the Hidden Huts.

Season: 15.6.2018 – 31.8.2018

Duration: 1,5 hrs. **Starting time:** 13:00 h
Price: Price per person. Available also on Fridays.

HORSE RIDING IN THE FOREST FOR ONE HOUR

One hour trail riding trek with original Finnish horses. The pace is adjusted according to the abilities of the riders and the weather. The tour is ideal also for beginners. We try to arrange a separate group for advanced riders.

Season: 01.06.2018 – 26.08.2018

Duration: about 1 hour (riding time ca. 30-45 min). **Starting time:** 13:00 h
Price: Price per person. Transfer included. Available also on Thursdays.

PONTOON FERRY CRUISE

The pontoon ferry runs along lake Sirkkajärvi and lake Levijärvi and if the weather is good we take a break at the beach. At the beach, you can go swimming and enjoy the sauna. On the ferry, you can buy sweet crepes, sausages and coffee made on an open fire. You can also bring your own beverages. Warm clothing is recommended.

Season: 01.06.2018 – 26.08.2018

Duration: about 2 hrs. **Starting time:** 14:00 h
Price: Prices for adults and children (4-12 yrs.). Transfer included. Available also on Fridays.

MIDNIGHT SUN PHOTOGRAPHY SAFARI

Take the best photographs of your Arctic holiday! Join us and discover the beauty and nature of Lapland under the unique light of the midnight sun. Our guide is Dr Juha Tolonen, internationally acclaimed landscape photographer. Nikon cameras and tripods are included; or bring your own camera. We provide you with professional guidance and tips on landscape photography. Suitable for children over the age of 12 yrs.

Duration: about 4 hrs. **Starting time:** 21:00 h
Price: Price per person. Transfer included.

WEDNESDAY

CANOING ALONG THREE RIVERS

At first you get to know the kayaks with your guide, then we start our journey canoeing along the three atmospheric northern rivers. We will also enjoy Lappish campfire coffee and special Tapas.

Duration: about 6-8 hrs. **Starting time:** 10:00 h
Price: Price per person. Transfer included.

EXCURSION TO THE HUSKY FARM

At the husky farm, you will have a chance to get up close to the Arctic sled-dogs and hear fascinating stories of their lives throughout the year, and how they love their work during the winter! Enjoy a peaceful break by the open fire in the traditional kota, and delicious sausage and cup of hot juice before returning to Levi by car.

Season: 01.06.2018 – 31.08.2018

Duration: about 2 hrs. **Starting time:** 09:45 h
Price: Prices for adults and children (4-14 yrs.). Transfer included.

FORAGE & FIRE

Collect your own food in the forests of the Arctic! Join us on a guided foraging tour and learn to identify edible foods, collect wild herbs, flowers, nettles, wild berries and many varieties of mushrooms. The path of our journey to Pallas-Ylläs National Park will be guided on what we can find in the forests and we share a meal cooked by the fire using locally sourced ingredients. Suitable for all ages.

Duration: about 5 hrs. **Starting time:** 10:00 h
Price: Prices for adults and children (4-14 yrs.). Transfer included.

MIDNIGHT SUN CANOE SAFARI

Admiring the stunning scenery under the midnight sun, we enjoy paddling and forget everything else. It's only the quiet nature, canoes and us. At the end of the trip we enjoy campfire coffee. Suitable for the whole family.

Season: 01.06.2018 – 26.08.2018

Duration: about 2 hrs. **Starting time:** 20:00 h
Price: Prices for adults and children (4-12 yrs.). Transfer included.

MIDNIGHT SUN RIDING TREK ON ICELANDIC HORSES

A two hour' Icelandic horse trek during Lapland's night less night. The horses are small, cute and charming, yet strong, tough and sure-footed. No previous riding experience is required. Hot beverages and cookies are served during this excursion. Rider's maximum weight 90-100 kg. Children minimum age 12 years, unless they have previous experience of riding treks.

Duration: about 2 hrs. **Starting time:** 20:45 h
Price: Price per person. Available also on Fridays.

THURSDAY

A 2 HR LEVI ICELANDIC HORSE TREK

A two hours' Icelandic horse trek in beautiful Lappish scenery. The horses are small, cute and charming, yet strong, tough and sure-footed. No previous experience required. Rider's maximum weight 90-100 kg. Children minimum age 12 years, unless they have previous experience of riding treks. Hot beverages and cookies are served during this excursion.

Duration: about 2 hrs. **Starting time:** 09:45 h
Price: Price per person.

PHOTOGRAPHY SAFARI

Capture the magic of the Arctic in one of Finland's most famous National Parks! Join Dr Juha Tolonen, highly acclaimed landscape photographer. Enjoy a delicious lunch made with ingredients from the forests and lakes where you will be exploring on your Photography Safari. Unsuitable for children under 12 years.

Duration: about 4 hrs. **Starting time:** 11:00 h
Price: Prices for adults and children (12-18 yrs.). Transfer included.

HORSE RIDING IN THE FOREST FOR ONE HOUR

Available also on Tuesdays, same time.



DISC GOLFING FOR BEGINNERS

Increasingly popular disc golf is a fun way to spend your summer day! On this excursion, you will learn the basic technique and get useful tips for disc golfing. You will also get to know the rules of this sport and learn more advance techniques for the more challenging tracks. Suitable for beginners and players that already have some experience.

Duration: about 1 hr. **Starting time:** 15:45 h

Price: Price per person (price includes guidance and the use of 3 discs).

MIDNIGHT SUN SAFARI AT A WILDERNESS LAKE

We will go by a car towards Pallas fell and enjoy the peaceful nature by the wilderness lake Kivijärvi. During the evening, you can try fishing from a boat and from the shore. There are also fish traps which we check, we may catch perch, pike or trout. You can also go hiking and picking berries in the surrounding area. By a campfire, we grill sausages and enjoy coffee. You can take your own beverages with you. Suitable for the whole family.

Season: 01.06.2018 – 26.08.2018

Duration: about 4 hrs. **Starting time:** 19:00 h

Price: Prices for adults and children (4-12 yrs.). Transfer included.

HIKING UNDER THE MIDNIGHT SUN

An enjoyable and relaxing hike in the night less night of Levi. This hike is suitable for everyone and will give you the chance to experience the phenomenon of the Midnight Sun which is visible only above the Arctic Circle. The excursion will include a snack made by the open fire and a toast to the Midnight Sun at Midnight. Don't forget your sunglasses!

Season: 01.06.2018 – 31.07.2018

Duration: about 3 hrs. **Starting time:** 21:15 h

Price: Prices for adults and children (4-14 yrs.). Available also on Saturdays.

FRIDAY

IN THE FATHOM OF THE NATIONAL PARK, PADDLING IN THE KINGDOM OF GNOMES

Discover the magnificent and unforgettable mountain scenery in the area of gnomes and in one of our oldest national parks in Finland. You might enjoy viewing of animals both on the shore and in the water. We will have lunch and traditionally made coffee, pot coffee, by an open fire with a sweet bun. You can also refresh yourself in the lake if you feel like it!

Season: 01.06.2018 – 26.08.2018

Duration: about 6-8 hrs. **Starting time:** 10:00 h

Price: Price per person. Transfer included.

CRAZY ABOUT ANIMALS

During the guided tour you can get to pet most of the animals such as Jekku, which is a very sociable reindeer, lovely Tibetan Terrier, furry rabbits, goats, a mini pig, ponies, horses and many other animals that live in an idyllic setting in the yard of the old farmhouse. Juice and sweets are offered. For an extra charge of 5 € person it is possible to have a ride with the pony. In the café hut you can buy coffee, ice cream and other sweet and savoury snacks.

Duration: about 1,5 hr. **Starting time:** 11:00 h

Price: Prices for adults and children (2-14 yrs.).

SUMMER TRIP WITH THE ELF IN THE YELLOW DRESS

Available also on Tuesdays, at the same time.

PONTOON FERRY CRUISE

Available also on Tuesdays, at the same time.

SPEEDY FREERIDE BIKING AT LEVI BIKE PARK

Hit the freeride/ enduro tracks at Levi Bike Park which offers speed, challenges and great views to Lappish fells. The height difference is over 300 meters but the tracks are served by a cabin lift. Our guide will accompany you and the program is suitable also for beginners and children over 12 years of age. The participants under 18 years must present a permission signed by their parent. Please remember to take your own water bottle.

Duration: 1,5 - 2 hrs. **Starting time:** 15:15 h

Price: Price per person incl. hire of freeride bike, safety gears, cabin lift ticket and tuition.

WILD FOOD COOKING WORKSHOP

Eat Arctic, eat wild! Join us for a workshop in preparing and cooking a 3-course meal with wild foods found in the beautiful and pure environment of Lapland. We cook with foraged foods that are in season and with special ingredients not found in supermarkets. Special dietary requirements can be easily accommodated, please let us know in advance. We can take you to our local kitchens, or alternatively, this activity can be undertaken in your own accommodation if booked as a group.

Duration: about 4 hrs. **Starting time:** 17:00 h

Price: Prices for adults and children (4-14 yrs.).

MIDNIGHT SUN RIDING TREK ON ICELANDIC HORSES

Available also Wednesdays, at the same time.

SATURDAY

CLATTER OF THE HOOF

Enjoy the northern surroundings on a horse for a whole day. During this trek, we will stop to enjoy lunch and relax by an open fire. Suitable also for beginners. We try to arrange a separate group for advanced riders.

Season: 01.06.2018 – 26.08.2018

Duration: about 5 hrs. **Starting time:** 10:00 h

Price: Price per person. Transfer included.

WATERJET SAFARI

Enjoy water jet driving in summery Levi admiring the fells from a different perspective! Driving is easy, much fun and safe. Drinks included. Driving license not required, minimum age limit is 15 years old. Needed equipment and driving instructions given before the start.

Season: 01.06.2018 – 26.08.2018

Duration: about 2 hrs. **Starting time:** 14:00 h

Price: Price per person. Transfer included.

Pick up within the Levi centre can be arranged upon request.

VISIT OUR HORSE AND HUSKY FARM - WELCOME TO OUR HOME

Warmly welcome to our familiar horse and husky farm. During your visit, we'll tell you about our beloved, kind and friendly family members and workmates: huskies and horses. We might even have some puppy dogs in the kennel that you can pet. You'll hear about the history, training, manners of living, work and free time of our animals. We also enjoy some juice, sausage and stick buns by the open fire.

Season: 01.06.2018 – 26.08.2018

Duration: about 1,5 hrs. **Starting time:** 16:00 h

Price: Price per person. Transfer included.

HIKING UNDER THE MIDNIGHT SUN

Starting time: 21:30 h

Available also on Thursdays.

SUNDAY

SCENIC FAT BIKE EXCURSION

This tour is suitable for everyone and will give you the chance to experience some of the prettiest spots of Levi. Drive together with your guide along peaceful roads and forest paths and hear stories of the local nature and life in Lapland. This excursion is suitable for children of 15 years and over.

Season: 01.06.2018 – 26.08.2018

Duration: about 2 hrs. **Starting time:** 09:45 h

Price: Price per person.

All rights reserved.



WEEKLY PROGRAM FOR NORTHERN LIGHTS SEASON 2018

MONDAY FOREST CLIMBING

Climbing will take place in a typical Lappish pine forest through ropes and climbing elements attached to the trees, several meters above ground level. The track includes for example wooden and rope bridges, stairs and tunnels. This activity requires balance, concentration, coordination and some strength! Even though the track might feel challenging, climbing is a safe and rewarding activity. Our staff will instruct all participants on safety matters and provide the needed equipment: helmet, safety harness and gloves. Ankle supporting shoes are required. Minimum height 130 cm.

Season: until 31.10.2018 according to the weather conditions.

Duration: about 2 hrs. **Starting time:** 10:15 h
Price: Price per person (price includes guidance and safety equipment).

CANOE TOUR FOR PLEASURE LOVERS

We meet at Levi where from we have a transportation to Taivaanvalkeat. We'll have a small tour in the yard and enjoy the Lappish architecture. Before we start to paddle, the guide tells about the paddling technique. Down the river, we go! On our break, we will grill sausages by the open fire. The bravest ones will have an opportunity to swim in the pure water of river Ounasjoki.

Season: 21.08.2018 – 28.09.2018

Duration: about 3 hrs. **Starting time:** 11:00 h
Price: Prices for adults and children (under 12 yrs.). Transfer included.

BERRY PICKING - SUPERFOOD STRAIGHT FROM THE FOREST

Our guide will take you to the forest, through various landscapes and tells you about the delicacies of the several berries and nature itself. You can find different kind of berries, depending on the season, from the forest. We might also meet different Arctic animals on our excursion. During berry picking we enjoy "pot coffee" with a sweet bun by the open fire. Please note, no guarantee of finding berries.

Season: until 31.10.2018

Duration: about 2-3 hrs. **Starting time:** 13:00 h
Price: Prices for adults and children (4-12 yrs.). Transfer included.

US AND AURORAS: DINNER AT LAKE HUKKAJÄRVI

On the shore of the private lake Hukkajärvi, you can enjoy a three-course meal in peace. The hut is situated about 15 km from Levi centre. That is why on a clear night you have a great chance to see auroras reflected on the lake surface. In between the courses while waiting for the Northern Lights you can get acquainted with reindeer life. The price includes a starter, main meal and dessert according to what is available in the season.

Duration: about 2-3 hrs. **Starting time:** 18:30 h
Price: Price per person. Transfer included.

AURORA ICELANDIC HORSE TREK

Icelandic horses are small, cute and charming, yet strong, tough and sure-footed. This evening horse riding excursion offers a great way to experience Northern Lights! No previous experience is required. Rider's weight limit max. 90-100 kg. Children age limit 12 years, unless they have previous experience of riding treks. Cookies and warm drinks served on this excursion.

Duration: about 2 hrs. **Starting time:** 18:45 h
Price: Price per person. Transfer included. Available also on Thursdays.

AURORA HUNTING IN THE PURE AIR OF THE PALLAS NATIONAL PARK

Join us to search for the Aurora Borealis while enjoying an easy walk in some of Lapland's most breath taking, untouched fell nature. During our trip, we will make a fire with our wilderness guide, where we will enjoy a hot drink and cook sausages over the open fire.

Season: 01.09.2018 - 30.11.2018

Duration: about 4 hrs. (including transfer).

Starting time: 20:15 h

Price: Prices for adults and children (4-14 yrs.).

TUESDAY PHOTOGRAPHY SAFARI

Capture the magic of the Autumn colours of the fells, lakes and forests of the Arctic. We provide you with professional instruction to help you capture the best photographs of your Lapland holiday. Cameras and tripods included, or bring your own. Join, Dr Juha Tolonen, internationally acclaimed landscape photographer, and explore one of the most famous National Parks in Finland. Enjoy a delicious lunch made with Arctic foods from the forests and lakes you will be exploring.

Season: 01.09.2018 – 30.11.2018

Duration: about 4 hrs. **Starting time:** 11:00 h

Price: Prices for adults and children (12-18 yrs.). Transfer included.

A HIKE WITH A REINDEER

Join us for a hike through the autumn colours on top of fell Kätkätunturi, with a reindeer and guide. Our reindeer help us out by carrying part of our burden on their back. On the easiest part, it is nice to have a chat with the guide about nature and animals and get to know our splendid reindeer: Jekku and Kassu! Along the way, we enjoy outdoor meal. Age limit 12 yrs.

Duration: about 4 hrs. **Starting time:** 12:00 h
Price: Price per person.

ONE HOUR HORSE RIDING IN THE FOREST

One hour trail riding trek on original Finnish horses. Suitable for beginners. We try to arrange separate group for advanced riders.

Duration: about 1 h (riding time ca. 30-45 min). **Starting time:** 13:00 h
Price: Price per person. Transfer included.

AUTUMN WALK WITH THE ELF IN THE YELLOW DRESS

You will get to know the secrets of Elves Hide-away with one clever elf. See the barns in the courtyard and smell the Lappish power herbs in the garden. In the Magical Forest, you will see the wonders of the nature and find your way to the Hidden Huts.

Season: 01.09.2018 - 30.9.2018

Duration: about 1,5 hrs. **Starting time:** 13:00 h
Price: Price per pers. Available also on Fridays.

NORTHERN LIGHT CRUISE/ PICNIC EXCURSION

The Northern Lights pontoon cruise starts in the evening gloom. There is an open camp fire on the pontoon ferry to give natural gentle light to the cruisers. Nearby the fire, you can warm up and enjoy your own beverages, bake sausages and have sweet crepes for example. If you dare, you can also go swimming into the lake and warm up in the ferry's cute little sauna. During the cruise, we admire the magical atmosphere of Lappish autumn night under millions of stars and hopefully under the amazing Northern Lights. The pontoon ferry runs until the lake is frozen, after that it will be replaced by a picnic excursion. Blankets and warm overalls are available.

Duration: about 3 hrs. **Starting time:** 20:00 h



Price: Price per person. Transfer included. Available also on Fridays.

CANOEING UNDER THE NORTHERN LIGHTS

In the gloom of darkness night, we get to enjoy the colour spectrum in the sky and the silence of the nature, while paddling far away from the artificial lights. Inside a Lappish hut, by the warm fire, we'll enjoy some of Lapland's delicacies and hear stories about Lapland.

Season: 21.08.2018 – 28.09.2018

Duration: 2-3 hrs. **Starting time:** 21:00 h

Price: Prices for adults and children (under 12 yrs.). Transfer included. Available also on Thursdays

AURORA FLOATING

This unique evening experience gives you the chance to search for the Northern Lights while floating in a dry suit in one of the most picturesque lakes in Levi! Our dry floating suits are worn over your clothing, and cover you from head to toe keeping you completely dry and warm as you take turns to float in the still, peaceful water under the moonlight. During the trip, we will also relax by the cosy fire listening to stories about life in Lapland and the Northern Lights while enjoying a local snack. This excursion is suitable for children of 15 years and over.

Season: 01.09.2018 – 30.11.2018

Duration: about 2-3 hrs. (including transfer).

Starting time: 21:15 h

Price: Price per person.

WEDNESDAY

TRIP TO SAANA AND ARCTIC OCEAN

On our way to Kilpisjärvi our guide, will tell us about Lappish people life, culture and nature. We will stop at Arctic Knife store for shopping and enjoying coffee and some sweet breads. At Kilpisjärvi we will buy lunch for ourselves in a camping centre. Then we will start climbing to one of the Finland's famous fell, Saana. We will enjoy the most beautiful view on our way and at the top and see the tree countries border. When we come back from Saana-fell we continue trip to see Arctic Ocean. There we can refresh ourselves by swimming and do shopping in local stores. After this lovely tour, we will head back to Levi with many new experiences!

Season: 21.08.2018 – 28.09.2018

Duration: full day, about 14 hrs.

Starting time: 08:00 h

Price: Prices for adults and children (under 12 yrs.). Transfer included

2 HR LEVI ICELANDIC HORSE TREK

A two hours' Icelandic horse trek in beautiful Lappish scenery. The horses are small, cute and charming, yet strong, tough and sure-footed. No previous experience is required as our good-natured, gentle horses can also take beginners safely on their backs into the forest or on the fells. Rider's maximum weight 90-100 kg. Children age limit 12 years, unless they have previous experience of riding treks. Hot beverages and cookies are served during this excursion.

Duration: about 2 hrs. **Starting time:** 09:45 h

Price: Price per person. Transfer included.

IN THE FATHOM OF THE NATIONAL PARK, PADDLING IN THE KINGDOM OF GNOMES

Paddling on the bright and unpolluted lakes makes you feel comfortable, relaxed and you can forget all the other things when just enjoying the surroundings around you. You might even see the animals both on a shore and on a water. During this trip, we enjoy lunch and traditionally made coffee, pot coffee, by the open fire with a sweet bun. You can also refresh yourself in the lake if you feel like it!

Duration: about 6-8 hrs. **Starting time:** 10:00 h

Price: Price per person. Transfer included.

FORAGE & FIRE

Join on a guided tour and learn to identify edible foods, collect wild herbs, flowers, nettles, wild berries and many varieties of mushrooms. We forage on our way to a Lapland style hut and enjoy a meal cooked by the fire using locally sourced ingredients. Suitable for all the ages.

Season: 01.09.2018 – 30.11.2018

Duration: about 5 hrs. **Starting time:** 10:00 h

Price: Prices for adults and children (4-14 yrs.). Transfer included.

EXCURSION TO THE HUSKY FARM

You will have a chance to get up close to the Arctic sled-dogs and hear fascinating stories of their lives throughout the year, and how they love their work during the winter! Enjoy a peaceful break by the open fire in the traditional kota, and delicious sausage and cup of hot juice before returning to Levi by car.

Duration: about 2 hrs. **Starting time:** 09:45 h

Price: Prices for adults and children (4-14 yrs.). Transfer included.

EVENING TRIP TO SÄRKI FELL

We leave by bus from the Levi Tourist Office and drive towards fell Särkitunturi. We leave

the bus behind and hike towards the top of the fell. We will take a break in a kota (tepee) half way and enjoy beverages and enjoy the beauty of the gorge. On the top, we will make a fire and prepare warm drinks and open our lunch boxes. If we are lucky, we might see the spectacular Northern Lights!

Season: 30.8.2018– 31.10.2018

Duration: about 4-5 hrs. **Starting time:** 19:00 h

Price: Price per person. Transfer included.

NORTHERN LIGHT CANOEING

Enjoy the nature peace at wilderness lake, Kivijärvi! While admiring the stunning autumn scenery, we will enjoy paddling and forget all the mind revolving things of life. It's only quiet nature, canoe and us. And if we are lucky, we might see the spectacular Northern Lights! In the end of the trip, we will have warm cups of campfire coffee. Suitable for the whole family.

Season: Until 30.10.2018

Duration: about 2 hrs. **Starting time:** 20:00 h

Price: Prices for adults and children (4-12 yrs.). Transfer included.

THURSDAY

A DAY TRIP TO AAKENUSFELL

Our excursion starts with a short drive. After that we will start our hike on the top of fell Aakenus. And not to worry, we will have few breaks on the way! When we have reached the top of fell, it is lunch time! Enjoy your lunch, while admiring the beautiful fell scenery. Wonderful chance to experience autumnal Lappish nature!

Season: 30.08.2018 – 31.10.2018

Duration: about 4-5 hrs. **Starting time:** 10:00 h

Price: Price per person. Transfer included.

DISC GOLFING FOR BEGINNERS

Increasingly popular disc golf is a fun way to spend your summer day! On this excursion, you will learn the basic technique and get useful tips for disc golfing. You will also get to know the rules of this sport and learn more advance techniques for the more challenging tracks. Suitable for beginners and players that already have some experience.

Season: Until 30.10.2018.

Duration: about 1 hr. **Starting time:** 15:45 h

Price: Price per person (price includes guidance and the use of 3 discs).

WILD FOOD COOKING WORKSHOP

Eat Arctic, eat wild! Join us for a workshop preparing and cooking a 3-course meal with wild foods found in the beautiful and pure en-



vironment of Lapland. We cook with foraged foods that are in season and with special ingredients not found in supermarkets. Special dietary requirements can be easily accommodated, please let us know in advance. We can take you to our kitchens, or alternatively, this activity can be undertaken in your own accommodation if booked as a group.

Season: 01.09.2018 – 30.11.2018

Duration: about 4 hrs. **Starting time:** 17:00 h

Price: Prices for adults and children (4-14 yrs.).

AURORA ICELANDIC HORSE TREK

Available also on Mondays, at the same time.

NORTHERN LIGHTS SEARCH AT WILDERNESS LAKE

Enjoy the nature peace at wilderness lake, Kivijärvi! During the evening, you can try fishing from a boat and from the shore. There are also fish traps, which we will check. You can also go hiking or berry picking, or both! During this excursion, we grill sausages on the fire and prepare camp fire coffee. You can take your own beverages with you. This trip is suitable for the whole family.

Season: 27.08.2018 – 30.11.2018 according to weather conditions.

Duration: about 4 hrs. **Starting time:** 19:00 h

Price: Prices for adults and children (4-12 yrs.). Transfer included.

CANOEING UNDER THE NORTHERN LIGHTS

Available also on Tuesdays, at the same time.

FRIDAY

4 HR IN THE BOSOM OF THE FELS ON ICELANDIC HORSES

A four hours' Icelandic horse trek in beautiful Lappish scenery. The horses are small, cute and charming, yet strong, tough and sure-footed. No previous experience is required for the trek. Maximum weight 90-100 kg. Children minimum age 12 years, unless they have previous experience of riding treks. Hot beverages and cookies are served on this excursion.

Duration: about 4 hrs. **Starting time:** 09:45 h

Price: Price per person. Transfer included.

CRAZY ABOUT ANIMALS

During the guided tour, you will meet among others Sulo the mini pig, Kukka the goat and Jekku the reindeer. They enjoy been brushed while the mini pig makes its' stunts. These and many other animals live in an idyllic setting in the yard of the old farmhouse. Juice and sweets are offered during this trip. For an extra

charge of 5 € person it is possible to have a ride with the pony. In the café hut you can buy coffee, ice cream and other sweet and savoury snacks.

Duration: about 1,5 hr. **Starting time:** 11:00 h

Price: Prices for adults and children (2-14 yrs.).

AUTUMN TRIP WITH THE ELF IN THE YELLOW DRESS

Available also on Tuesdays, at same time.

STARS AND NORTHERN LIGHTS ON THE TOP OF KÄTKÄ FELL

A hiking trip on the top of fell Kätkä, in beautiful autumn nature. On the top of the fell, we will open our lunch boxes and have a snack in the middle of nature. If we are lucky enough, we might see the spectacular Northern Lights!

Duration: about 4 hrs. **Starting time:** 19:00 h

Price: Price per person.

NORTHERN LIGHT CRUISE/ PICNIC EXCURSION

Available also on Tuesdays, at the same time.

ON THE PATHS OF NIGHTLESS NIGHT - SEARCHING THE NORTHERN LIGHTS ON A HORSE

Nice about 2 hours' program with horseback riding trip in a forest during the evening. Autumn time, the evenings are getting darker and we have good opportunities to see the Northern Lights. We have a pause by the open fire with a traditional "pan coffee".

Duration: about 2 hrs. **Starting time:** 20:00 h

Price: Price per person. Transfer included.

AURORA CHASE

Join us for an exciting journey where we chase and photograph the Northern Lights in comfort. All equipment is provided and no prior photography experience needed. We'll show you how the rhythms of the aurora are enhanced with a few simple camera techniques. The photographs and memory card are yours to keep. Suitable for children over 12 yrs.

Season: 01.09.2018 – 30.11.2018

Duration: about 4 hrs. **Starting time:** 22:00 h (Sept.), 20:00 h (Oct. and Nov.)

Price: Price per person. Transfer included.

SATURDAY

MAGIC OF TÖLT

One hour riding excursion. 'Tölt' is a pleasant gait, where the rider sits as if in an armchair. Above all, this is something that must be experienced. No previous experience is required for the trek. Rider's maximum weight 90-100 kg. Children age limit 12 years, unless they

have previous experience of riding treks. Hot beverages and cookies are served on this excursion.

Duration: about 1 hr. **Starting time:** 09:45 h

Price: Price per person. Transfer included.

CLATTER OF THE HOOF – A WHOLE DAY RIDING TRIP

Enjoy the northern surroundings on a horse for a whole day. During this trip, we enjoy lunch and relax by the open fire. This trip is suitable also for beginners. We try to arrange a separate group for advanced riders.

Duration: about 5 hr. **Starting time:** 10:00 h

Price: Price per person. Transfer included.

VISIT OUR HORSE AND HUSKY FARM - WELCOME TO OUR HOME

Warmly welcome to our familiar horse and husky farm. During your visit, we'll tell you about our beloved, kind and friendly family members and workmates: huskies and horses. We might even have some puppy dogs in the kennel that you can pet. During this visit, you'll hear about history, training, manners of living, work and free time of our animals. We also enjoy some juice, sausage and stick buns by the open fire.

Duration: about 1,5 hrs. **Starting time:** 16:00 h

Price: Price per person. Transfer included.

SUNDAY

SCENIC FAT BIKE EXCURSION

This tour is suitable for everyone and will give you the chance to experience some of the prettiest spots of Levi. Drive together with your guide along peaceful roads and forest paths and hear stories of the local nature and life in Lapland. This excursion is suitable for children of 15 years and over.

Duration: about 2 hrs. **Starting time:** 09:45 h

Price: Price per person.

All rights reserved.



Founded: 2008

Employees: 10

Languages: English

Season: 01.09. - 30.04.

Note: dogs not allowed; parking places available; 10 km to Levi village

Activities: Snowshoeing and skiing in winter, hiking in summer. All activities available in Levi village (15 minutes drive from Levi Igloos). Please see www.levi.fi

Other services: Special Christmas (24th and 25th of December) and New Year's dinner (31st of December)

Contact

Luisu OY/ Golden Crown - Levi Igloos

Sales Office:

Jessica Jansson

Kylänpääntie 6, 04310 Tuusula

Golden Crown - Levi igloos (holiday village):

Harjatie 4, 99130 Levi

Tel. +358 (0) 50 313 5637

sales@leviniglut.fi

www.leviniglut.fi

facebook.com/leviniglut

instagram.com/leviniglut

GOLDEN CROWN - LEVI IGLOOS

GLASS IGLOO VILLAGE

The glass igloo village consists of 5 premium igloos, 19 superior igloos and 1 Northern Lights House.

In the glass-ceilinged Levi Igloos or the subterranean Northern Lights House, you are surrounded by stunning fell scenery, and you can be part of the great glory of nature all year round.

The constantly changing landscape spreads unobstructed before your eyes. The open skies, adorned with clouds, stars and magical northern lights, are your roof.

Experience the Arctic nature in a unique and luxurious way, only 10 kilometres from the bustling holiday resort of Levi. Envelop yourself in the perfect peace of the untamed wilderness, while still having access to local services.

PREMIUM IGLOOS

Premium igloo located in the front row with the best view (23 m²).

Number of Premium Igloos: 5

Facilities: air-condition, private bathroom (shower and toilette), breakfast set for 2 persons, radio, microwave, stove, coffee maker, kettle, fridge, hairdryer, Wi-Fi, bathrobes and slippers and a welcome drink

SUPERIOR IGLOOS

The Superior Igloos are located behind the Premium Igloos, but still offer gorgeous vistas. The view of the starry sky through the glass ceiling is unobstructed (23 m²).

Number of Superior Igloos: 19

Facilities: air-condition, private bathroom (shower and toilette), sofa-bed (suitable for 2 small children or 1 adult) breakfast set for 4 persons, radio, microwave, coffee maker, kettle, fridge, hairdryer, Wi-Fi

NORTHERN LIGHTS HOUSE

Number of Northern Lights House: 1

Villa suitable for 2-4 guests (123 m²).

Facilities: Living room with landscape windows and fireplace, a fully equipped kitchen, two bedroom suites, three toilets, 2 bathrooms, a cosy fireplace den, a sauna and a panoramic terrace with a hot tub for six.

RESTAURANTS

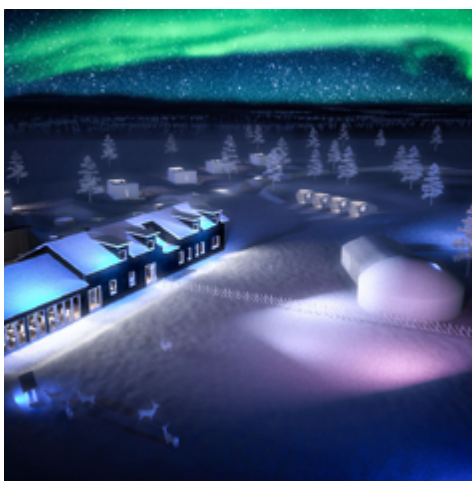
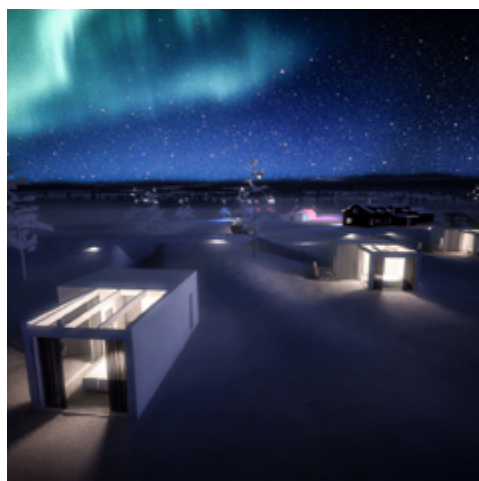
Aurora Sky Restaurant

Season: 01.11. - 30.04.

Service: breakfast, 3-course half board dinner (to be ordered 1 day in advance), a la carte menu

Note: During low season (01.09. - 30.10.) breakfast brought to the igloos' fridge the evening before. For groups (min. 5 igloos) breakfast will be served in the restaurants as well as dinner upon request. Wooden teepee with open fire place available for all guests.

Prices: Price list available to download.



NORTHERN LIGHTS RANCH

Northern Lights Ranch is a new unique restaurant and accommodation facility located in Finnish Lapland, 15 km from Levi ski centre and 30 km from Kittilä airport. It combines tranquility, pure air and beautiful nature into an Arctic experience which is rare to come by. Because of its remote location away from artificial light, it offers the best chance to experience the amazing Northern Lights, which are often visible during the period of August-April.

ACCOMMODATION

The Northern Lights Ranch offers different types of individual accommodation units which all have in common a great view towards the Northern sky through large windows and glass ceilings. The accommodation units also have detailed interiors with a touch of Arctic luxury.

Number & type of accommodation:

1 x Olokoto log apartment for 2 persons
5 x Olokoto L log apartments each for 2-4 persons
4 x Olokoto capsules each with a hotel room from the main building

Note: The current plan is to build 10 more units for autumn/ winter 2018. The unit plans will be available in early 2018.

Facilities: All rooms/apartments are equipped with ensuite bathrooms and double beds. All Olokoto L models have a separate sitting area with TVs and sofa beds. The Olokoto and Olokoto L apartments have motorized beds.

RESTAURANTS

The heart and soul of Northern Lights Ranch is its beautiful restaurant facilities where high standard breakfasts and dinners are served. The restaurant's unique feature is that it forms one part of a reindeer corral where the Northern Lights Ranch's reindeer live during the winter.

Capacity: The restaurant at Northern Lights Ranch features a bar area for approx. 20 persons and dining area for approx. 80 persons.

SPA & WELLNESS

Possibility to rent sauna for private use from the main house along with an outdoor hot tub. Two of the Olokoto L models will also feature their own private outdoor hot tubs.

Prices:

Commission based on amount of reservations/ allocations; available on request. Rates for 1-2 pax occupancy incl. VAT 10%. Excluding any meals.

price per night - Olokoto capsule with hotel room from main building, starting 08/2017

For winter 2017-18, the Olokoto capsules are included in the chalet rate (available on request)

price per night - Olokoto

price per night - Olokoto L

price per night - Olokoto L with hot tub

price per night - extra person

price per person - breakfast

price per person - half board (breakfast, dinner)
50% discount on meals for children (3-12 yrs)

Note: Low season rates from August to October for accommodation (available on request).

Founded: 2016

Employees: 4-8 depending on the season

Languages: English

Season: 15.11.2017-02.05.2018
24.08.2018-02.05.2019

Note: dogs not allowed; parking places available; next supermarket in 15 km

Special service for children: Snow sleds, snowshoes are available to be used free of charge on site. Possibility to feed the reindeer for an additional cost.

Transfer options: From airport Kittilä or train station Kolari at additional cost.

Contact

MYVON Oy/ Northern Lights Ranch
Olli Martinen

Ounasjoentie 1619, 99140 Königs

Tel. +358 (0) 40 515 7755

olli.martinen@omtuotanto.fi

info@theranch.fi

www.theranch.fi

[facebook.com/Northern-Lights-Ranch-](https://facebook.com/Northern-Lights-Ranch-Levi-Lapland-1815791365334665)

[Levi-Lapland-1815791365334665](https://facebook.com/Northern-Lights-Ranch-Levi-Lapland-1815791365334665)

instagram.com/northernlightsranch



Founded: 1988

Employees: 70

Languages: English, German

Season: year-round

Note: dogs allowed at Hotel Hullu Poro but not at Lodge Hotel Taivaanvalkeat; parking places available; supermarket 200 m from Hotel Hullu Poro and 8 km from Taivaanvalkeat

Transfer options: Private airport transfer need to be booked in advance: sales@hulluporo.fi

Contacts

Hullu Poro Oy

Leena Härkönen/ Director of Sales

Rakkavaarantie 5, 99130 Levi

Tel. + 358 (0) 40 021 8018

leena.harkonen@hulluporo.fi

sales@hulluporo.fi

www.hulluporo.fi

www.lapintonttula.fi

www.crazyreindeer.com

facebook.com/hulluporoooy

facebook.com/elveshideaway

twitter.com/crazyreindeer

instagram.com/hulluporolevi

instagram.com/elveshideaway

youtube.com/user/huporo

flickr.com/photos/hulluporo

HULLU PORO

HOTEL HULLU PORO

This family owned hotel has been an all-time favorite for travelers from all over the world for three decades. Located in the heart of Levi resort Crazy Reindeer offers comfortable rooms with free Wi-Fi access. Hotel guests may relax in the spa department enjoying a refreshing coolness of the cold-water plunge pool or warm bubbles of the Jacuzzi free of charge. The gym is open for training seven days a week.

ACCOMMODATION

Number & type of rooms: 157 rooms

130 twin/double rooms with shower, sauna or bathtub, 16 family rooms with own sauna for up to 4 persons, 11 two-storey apartments with own sauna for up to 6 persons.

Facilities: TV, free Wi-Fi, coffee/tea making facilities, refrigerator, shower, toilet, hairdryer in all rooms. Some of the twin/double rooms and all family rooms have a balcony. Some of the rooms have a drying cupboard for clothes

RESTAURANTS

The restaurants of Hullu Poro offer new flavors for each day of the week, a good selection of local and international kitchen. Our Dine Around packages are carefully prepared dining packages for those who want to eat in high-quality restaurants and at the same time take care of the variation. Dine Around packages have been planned in a way to create the most comprehen-

sive culinary journey Crazy Reindeer kitchens.

Number & types of restaurants: 15

Lunch/dinner: Rock Café Wanha Hullu Poro, Ämmilä (Finnish and Lappish), Pihvipirtti (Steakhouse), Taivas (Buffet dinner), Kammi (Lappish, Feast of Reindeer), Sapuska (Fondue and grill), Sushi Bar Asia, Ristorante Ren-na, Pub & Pizzeria Messi. New Chinese restaurant will be opened in November 2017.

Bars and night club: Reindeer Lounge & Bar, Pub Hölmölä, Hullu Poro Areena

On request basis (in Elves Hideaway 8 km from the center of Levi): Tonttula, Revontuliko-ta (Northern Lights hut)

SPA & WELLNESS

Reindeer Relax Center provides a wide range of wellness services and sauna experiences. Stay at Hotel Crazy Reindeer and be ready to get pampered. A variation of wellness treatments and activities await you.

Saunas: Sauna department in the main building of the hotel (two saunas, Jacuzzi and cold water plunge pool) and infrared saunas

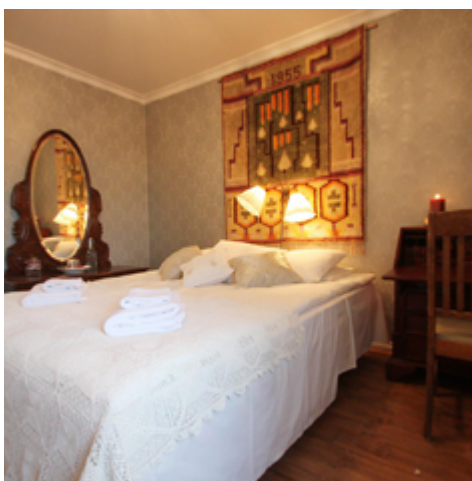
Sauna department in the separate hotel building (two saunas and Jacuzzi)

Mielenvälkeä sauna center 2 km from the hotel (two saunas)

Gym: Relax Center with salt room and a wide range of treatments.

Prices:

Price list with net rates available to download.



LODGE HOTEL TAIVAAINVALKEAT (NORTHERN LIGHTS)

Experience a place where human and nature are the same and time is not an issue. Here you can feel the magic of Lapland. Lodge Hotel Taivaanvalkeat and Elves Hideaway experience village are a unique complex on the riverbank of Ounasjoki river. Only 8 km from the center of Levi you will find a place that is one of a kind. There are no street lights, no demands, only peace and joy of life.

Taivaanvalkeat and its quiet country surroundings offer rustic style accommodation, a bit of luxury and heavenly food. Accommodation, meetings and events can be arranged in the main complex. This unique hotel combined with the activities of Elves Hideaway experience village is an excellent place for groups, incentives and families.

ACCOMMODATION

Number & type of rooms: 13 rooms at Lodge Hotel Taivaanvalkeat: downstairs 9 twin rooms, upstairs 4 twin rooms with an extra bed each. All rooms with own shower and toilet, hairdryer.

4 rooms at Country House: Downstairs 1 double bedroom, separate shower and toilet, upstairs 3 twin/ double rooms with and extra bed each, shared shower and toilet.

Facilities Lodge Hotel Taivaanvalkeat:

Breakfast room, TV and fire place in the living room downstairs, TV and kitchenette in the lounge upstairs, two saunas and hot whirlpool

outdoors, upper floor can be closed off the ground floor (own entrance).

Facilities Country House: TV in the living room, kitchen and sauna

RESTAURANTS

Restaurant Tonttula: Cafeteria open daily. Lunch and dinner on request basis.

Revontulikota (Northern Lights hut): Lunch and dinner on request basis.

SPA & WELLNESS

Riverbank sauna: Traditional wood-heated sauna by Ounasjoki river, Hot whirlpool outdoors. In winter possibility for ice-swimming Peat and honey masks available.

Prices:

Price list with net rates available to download.

TONTTULA ELVES HIDEAWAY

Elves Hideaway is an attractive destination based on stories, fantasy, culture and mythology of Lapland. It does not compete with traditional amusement parks. There are two strong traveling trends in Elves Hideaway: nature and culture. Elves Hideaway is open all year round and it invites travelers from all continents, both adults and children.

An Elf in the yellow dress is one of the main characters in Elves Hideaway. You can participate on a guided tour with the Elf and this tour leads you in the middle of beautiful Lappish forest where you can breathe the purest air and experience the diversity of nature. Maybe you will find your inner elf as well. During win-

ter season in November and from January until April the tour is available twice a week, as well as in summer-autumn from June until the end of September.

For groups the tour with the Elf can be arranged on request. Also a good variety of group programs are available, for example Winter/ Summer activity day in Elves Hideaway, Lappish country style evening, Lappish cooking course or traditional Finnish sauna experience.

ACTIVITIES

WINTER/ SUMMER/ AUTUMN TOUR WITH THE ELF IN A YELLOW DRESS

Tour through the magical forest guided by the Elf in a yellow dress. See the wonders of nature and find your way to the most secret place of the elves, the Hidden Huts, and visit Gingerbread House, Elves' School and Wise Elf's House. Wear proper outdoor clothes and shoes.

GROUP PROGRAMS

Winter/Summer activity day in Elves Hideaway, Lappish country style evening, Lappish cooking course, Riverbank sauna experience. Forest berry/Wild mushroom hunting, Meet the Shaman

Season: open year-round; availability of activities differs

Note: group programs available on request

Prices:

Consumer rate, commission on request.
price per person - Winter/Summer/Autumn tour with the Elf in a yellow dress
Group program prices on request



Founded: 2009

Employees: 20

Languages: English, German

Season: year-round

Note: dogs are allowed; parking places available; next supermarket with gondola lift 400 meters, by car 4 km

Special service for children: Play area in the restaurant. Against extra cost: summer sledge track next to the hotel, kids slope next to the hotel (winter)

Activities: In winter, the hotel's unique location in the Levi Ski Piste offers an alpine-like opportunity to go downhill skiing straight from the door step.

Summer: A travel guide for individual travelers provided by the Hotel Levi Panorama can be found from the hotel website:

golevi.fi/en/experiences-and-activities/travel-guide-activities

Contact

Hotel Levi Panorama/ Exhibition Samiland
Tunturitie 205, 99130 Sirkka

Tel. +358 (0) 40 456 2059

sales@golevi.fi

www.golevi.fi, www.samiland.fi

facebook.com/HotelLeviPanorama

instagram.com/hotellevipanorama

instagram.com/samilandlevi

[youtube.com/channel/UCijBtERFgrB-](https://youtube.com/channel/UCijBtERFgrB-pw51Xf1VSBpg/videos)

[pw51Xf1VSBpg/videos](https://pinterest.de/golevifi)

pinterest.de/golevifi

HOTEL LEVI PANORAMA

With the most idyllic location slope side at Levi fell, Hotel Levi Panorama has a variety of accommodation in spacious hotel rooms and suites. The Hotel overlooking the Levi village is easily accessible via the Levi Express Gondola, by stairs or road. The magnificent views from Hotel Levi Panorama stretch out to the nearby fells of Pallas, Kätkä, Aakenus and Ylläs.

The bright and modern hotel rooms are well suited for families and holiday makers as well as business travelers

The hotel welcomes you with a complete set of services and facilities from restaurants and bars, Fitness room and Scenic saunas to the Event Centre Levi Summit with its a movie theatre, café and Samiland exhibition to ensure our guests enjoy their stay. Flexible meeting facilities in Levi Summit offer a perfect setting for meetings and events.

ACCOMMODATION

Number & type of accommodation: 169 rooms and 10 apartments (61 standard rooms, 84 superior rooms, 23 suites and 10 apartments with 1-2 bedrooms), room size 28,5 m² - 67,5 m²

Facilities: beds for two, shower, WC, hair dryer, flat-panel TV, several international TV and movie channels, electric kettle & complimentary coffee & tea in room, minibar, safe-deposit box, free Internet connection, Divan sofa bed for 1 adult or 2 children

RESTAURANT

Hotel's panoramic restaurant is located in two floors and offers cozy seating areas and a bar. Restaurant offers breakfast, dinner and À la Carte. Both floors have seating with breathtaking views to the Northern fells and plains.

SPA & WELLNESS

Scenic sauna section in the 7th floor, open daily for all hotel guests.

Prices: Price list with group and FIT rates available to download.

EXHIBITION SAMILAND

Samiland Exhibition is a part of the worldwide UNESCO Observatory Cultural Village program. Exhibition is located in the Event Centre Levi Summit which is annexed to the Hotel Levi.

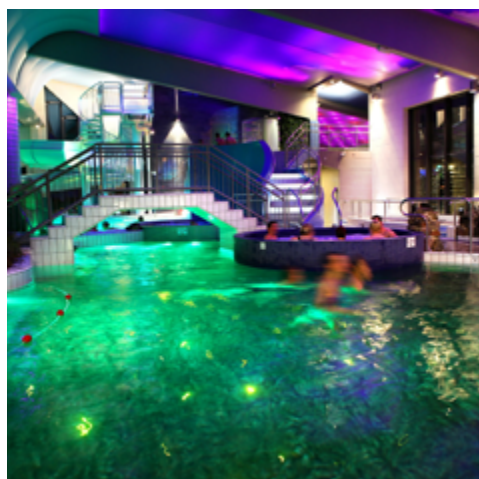
Panorama Exhibition consists of an indoor exhibition (500 m²) and an outdoor exhibition (10,000 m²), which explore the history and present day, culture and mythology of the European Union's only indigenous people, the Sami.

Season: Exhibition is open around the year.

Services: The entrance ticket includes a cup of coffee, tea or hot juice that can be enjoyed in the cafe after a tour of the exhibition.

Optional: Guided tours available, also with joik performance.

Prices: Price per person. Guided tours upon request.



LEVI HOTEL SPA

In Levi Hotel Spa, you get to relax right at the foot of the ski slopes in a room that is perfect for you and your travel companions. We are offering easy-going holidays in standard rooms, cosy accommodation with children in four-bedded-family rooms and super stylish atmosphere in the superior rooms and junior suites of Ounas hotel building. Here everything is close by, but in the privacy of our own atmospheric courtyard. Our spa, conference rooms and restaurants are close to the rooms – even the Levi village centre is just around the corner.

ACCOMMODATION

Number & type of rooms: There are a total of 220 hotel rooms:

41 standard twin rooms, 125 apartment rooms with twin bed in the main room, bunkbed in small alcove and small kitchenette with hot water kettle, coffee machine and microwave, 18 superior twins with balcony, 30 junior suites with separate bedroom, balcony and sauna, 6 spacious suites

Facilities: All rooms with shower, TV, fridge, ironing facilities, drying cupboard, Wi-Fi. In superior rooms and juniorsuites also cupsolo coffee machine.

RESTAURANTS

The pulse and choice of the main restaurant Ahku vibrates and varies according to season where the standard meals from breakfast to dinner and a la carte are served. Restaurant

wing Taika offers a flexible space best suited for private occasions and parties. The elegant and cozy Classic Pizza Restaurant offers stylish pizzas with glass of champagne! For friends of karaoke and live music the place is without doubt Joiku Music Bar downstairs of the restaurant area.

SPA WATER WORLD

Spa Water world is a large indoor water park with total 17 different pools and jacuzzis and saunas. There are outdoor pools, pools with hot and cold water, children's pool area, water jogging pool, water slide, big swimming pool etc. and magical effects! Changing colours, lights, videos and sometimes it's even snowing there.

SPA & WELLNESS

Available spa treatments from manual massage to pampering facial treatments.

AILU FAMILY FUN & BOWLING

The ground floor of spa building is dedicated to families with children. Totally newly renovated inside playing area offers activities for small children and bowling for both children and adults.

Prices:

Net rates available on request.
price per person in standard twin/ summer months
price per person in standard twin/ October
price per person in standard twin/ winter
More information by request.

Founded: 1981

Employees: 80

Languages: English, German

Season: year-round

Note: nearest supermarket 300 m, downhill skiing 300 m, Kittilä Airport 14 km

Contact

Levi Hotel Spa
Tarja Syrjänen
Levintie 1590, 99130 Levi
Tel. +358 (0) 40 520 0293
tarja.syrjanen@levihotelspa.fi
hotel@levihotelspa.fi
www.levihotelspa.fi
facebook.com/levihotelspa
instagram.com/levihotelspa
youtube.com/channel/UC99jJln3wDTcP-seSZtH4reA



Founded: Hotel has been built 2008

Employees: 35

Languages: English, German

Season: year-round

Note: dogs are allowed; parking places available; distance to next supermarket 500 m

Special service for children: childrens' playing room

Transfer options: public shuttle bus for every flight

Contact

Break Sokos Hotel Levi

Teija Neuvonen

Tähtitie 5, 99130 Levi

Tel. +358 (0) 50 913 2000

teija.neuvonen@sok.fi

sales.levi@sokoshotels.fi

www.sokoshotels.fi

facebook.com/BreakSokosHotelLevi

BREAK SOKOS HOTEL LEVI

Welcome to Levi! Levi is located in Lapland, 170 km north of the Arctic Circle. More than just a hotel, Break Sokos Hotel Levi means a vibrant interlude from everyday life. Speed downhill or spend a mind-soothing moment with fine art. Take a dog-sledge ride or pet a friendly reindeer.

Hotel interior reflecting the spirit of Lapland. The hotel rooms in three different buildings are decorated to reflect the different seasons. Do you feel the most at home in Lapland's summer brightness, autumn russets, or subdued tints of the winter? The flora and fauna of Lapland are also present in the décor, for example, in paintings and curtains.

The hotel sauna is heated every night, and a bath in the jacuzzi relaxes your body and soul. More experiences to your body and sense of taste serve our restaurant Kiisa and Coffee House & Bar. We want you to enjoy your stay with us, relax and find new inspiration. Whether you are on a work trip or a holiday, we want to offer you an unforgettable experience. Ask for further tips and suggestions - our Levi staff will gladly help you find great, relaxing and rejuvenating experiences.

ACCOMMODATION

Number & types of rooms: 202 rooms in total; Standard rooms, Superior rooms with sauna, Superior Extra rooms, Suites

Facilities: All rooms have a parquet floor, shower, hairdryer, minibar, TV and an iron with ironingboard.

RESTAURANTS

Restaurant Kiisa for breakfast, lunch and dinner. Coffee House & Bar

SPA & WELLNESS

2 saunas and in common area jacuzzi

Prices:

Rates available on request.

price per night - single room

price per night - double room



CENTRAL BOOKING OFFICE

ACCOMMODATION IN LEVI

For lodging in Levi you can choose what suits best for your clients. Levi Destination Sales offers a wide variety of hotels, cabins and apartments from 1 to 5 stars. Whether you are looking for an Alpine style apartment in the middle of the village, a log-cabin surrounded by nature or a luxurious glass igloo in the fell you will surely find a suitable option. The apartments and the cabins are well-equipped for a perfect holiday and in most of them you can enjoy the warmth in your own sauna.

Number & type of accommodation:

850 holiday apartments, 7 hotels, all together

Facilities:

Basic facilities: electric heating, hot/cold water, toilet, toilet paper, electric sauna and washing facilities as well as cooking facilities and tableware, refrigerator, coffee maker, microwave, dishwasher, bedding (pillows and blankets), iron, plug connector pole (to warm up the car in winter) and firewood (unless otherwise stated).

Any additional equipment is specifically mentioned in the accommodation description.

Note: We cannot guarantee the accommodation rented being allergy-free.

Pets are allowed in some apartments, in some for extra charge.

CLASSIFICATION OF ACCOMMODATION

Q1: Modest, simple, often supplied only with basic requirements. Suitable for those looking for affordable vacation.

Q2: Mid-range equipment, the decoration is modest.

Q3: Average. The facilities and interior design are reasonable.

Q4: Above average. A good level of equipment and attention to the interior design.

Q5: High standard. Very good level of equipment. Textiles, electronics equipment and furniture of high quality.

SPA & WELLNESS

Most apartments are equipped with own sauna, some apartments also have own jacuzzi. Spa and other wellness products are bookable.

Prices:

Net rates are available on request.

Founded: 1989

Employees: 20

Languages: English, German

Season: year-round

Note: pets only allowed in some apartments and in some at additional cost; parking places available; distance to supermarkets differs depending on the location of the apartment (mentioned in each apartment description).

Three supermarkets in Levi, two of them in the center of Levi and one close by the Gondola cabin 2000 lift (around 2,5 km from the center).

Special service for children: Most of the apartments have a child gate by the indoors stairs. Baby cots and high chairs are bookable in advance (in some apartments they are included).

Contact

Levi Destination Sales
Central Booking Office
Enna Paavola

Myllyjoentie 2, 99130 Levi

Tel. +358 (0) 50 511 0107

enna.paavola@levi.fi

www.levi.fi

facebook.com/levilapland

twitter.com/levi_lapland

instagram.com/levilapland

youtube.com/user/VisitLevi



Example activities for tailor-made packages

Summer program options: trekking, canoeing, biking (enduro, downhill, fat and mountain biking), husky park visits, reindeer farm visits, tours, cooking courses, 18-hole golf course, Gondola cabin lift sightseeing, Finnish sauna experience and swimming, Pontoon cruise on river Ounasjoki, Atv safaris, jet ski safaris

Winter program options: Northern Lights programs, visits to ice hotels, ice sculpting, photographing tours, winter rally driving, ice karting and snow cat trip, reindeer safaris, kick sledging, skiing, visits to Lappish shaman and Elfes hideaway, helicopter flights, hot air balloon flights, paragliding flights, windsurfing, winter laser world -games, wilderness skills program, wine tasting, wilderness cooking course, Lappish ceremony and kota dinners

Contact

Levi Destination Sales
Central Booking Office
Enna Paavola
Myllyjoentie 2, 99130 Levi
Tel. +358 (0) 50 511 0107
enna.paavola@levi.fi
www.levi.fi
facebook.com/levilapland
twitter.com/levi_lapland
instagram.com/levilapland
youtube.com/user/VisitLevi

EXAMPLES OF HIGH-END ACCOMMODATION

SILVER PINE VILLA

Located on top of Utsuvaara hill. This 500 m² luxurious log cabin offers traditional Lappish comfort in a very modern stylish design. Suitable for 14 people.

Facilities: 7 bedrooms and 14 single beds. On the first floor (entrance floor) a lobby, separate toilet and bedroom (2 single beds), maintenance room, sauna department with fire-place room, dressing room, spacious sauna, bathroom with three showers and toilet. On the second floor a living room, dinner table for 18 persons, kitchen, three bedrooms (2 single beds/ bedroom). Two of these bedrooms have a toilet, a shower and a bath. On the third floor there are two bedrooms, which have toilets, showers and baths and one bedroom with mini kitchen, toilet, sauna and washroom.

LUXURY ALPINE CHALET APARTMENT

A magnificent high quality 250 m² alpine style chalet apartment with balconies facing the skiing slopes. This high-class accommodation offers top level equipment and finest décor with high quality modern textiles and furniture. Suitable for 10 people.

Facilities: 5 bedrooms and 10 single beds. Apartment in an alpine style house in two floors. Downstairs two bedrooms, upstairs three bedrooms (2 single beds/ bedroom), toilets: four separate toilets: two in each floor, saunas: 2 x elec-

tric sauna and two showers in both washrooms. All bedrooms and 2 saunas with own balcony. Suitable for disabled. Bar kitchen upstairs.

LUXURY VILLAS

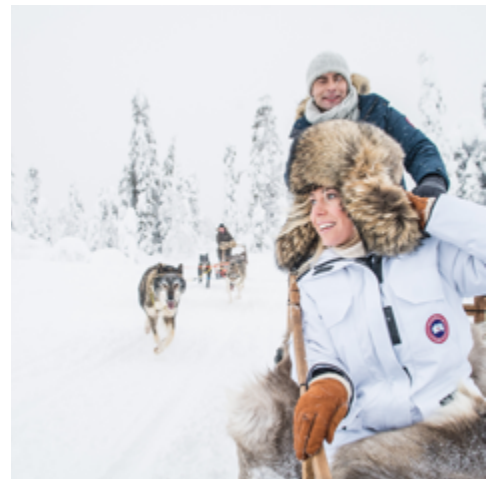
These 236 m² Villas blend subtly into the background. All villas are similar in appearance, yet individual in their interior decoration. Stone, wood and glass – the best of nature's materials – make up the elements of this modern architectural design. The exquisite décor is finished off with the finest fabrics and furnishings. A specialty of the villas is an atmospheric "kammi", which is a traditional Sami earth lodge, with an open fire. Suitable for 10 persons.

Facilities: Rooms: 4 bedrooms with own bathrooms and loft bedroom with twin / double beds. Large living room with fire place, dining room and open kitchen, two balconies and on the 1st floor there is also a unique, large non-heated room kammi with open fire place and a bar where simple meals can be served.

DESIGN LOG CABIN

This 300 m² design log cabin is located near all the services of Levi. It is made of high quality materials and is a combination of good design and beauty. This log cabin is filled with Finnish design. Suitable for 12 people.

Facilities: 6 bedrooms and 12 single beds. (4 bedrooms with own toilet and shower), 2 bedrooms on every floor + 2 separate toilets



AND HIGH-END ACTIVITIES

downstairs, big electric sauna, steam sauna, 3 shower in washing room, dressing room and spacious room with fireplace.

Ski maintenance room, terraces towards south and north. A roomy yard.

Prices:

Net rates for all accommodations on request.

PRIVATE HUSKY SAFARI

Find a real nature of Lapland and snowy adventure with our racing sled dogs. A sled dog team will take you about 15 to 20 km ride through the snowy land of Ylläs-Pallas national park (2 person on sled, self-driven). On the way, we will have break in forest teepee "kota". Having a creamy salmon soup for lunch and drinking hot juice we can talk about sled dog's life. During the trip, you can spend time with our dogs and taking photos.

Season: Beginning of season; 1st of December until half of April. Depending on weather.

Duration: Around 3 hours

Language: English

Participants: 2-10 pers.

Services included: guided husky tour (2 pers./ sled), creamy salmon soup, warm cheese bread, warm juice/coffee/tea and Finnish bun
Optional services: Transfers, chef, Santa Claus, clothing

Prices:

Net rates on request.

PRIVATE MEETING WITH FATHER CHRISTMAS

In Finland Christmas means peace and tranquillity, cozy white surroundings and the magical excitement of meeting Father Christmas! This is your one-in-a-lifetime chance to invite Father Christmas to your own accommodation! Spend a joyful time with him, listen to his fascinating stories about Christmas times and the elves and take memorable pictures with him.

OR

You may otherwise prefer to discover Santa's secret nest, meet Him privately and see his elves at their workshop. Playing with the elves, baking ginger biscuits and a short reindeer ride with Santa are some of the magical delights awaiting you! An experience not to miss!

Season: Beginning of November until end of March

Duration: Depending on the program, 30 min. to 2 hours.

Language: English

Participants: Depending on the program min. 2 pers. - max. up to 500

Services included: depending on the program

Optional services: depending on the program

Prices:

Net rates on request.

DISCOVER LAPPISH NATURE ON A SNOWMOBILE PRIVATELY

Snowmobiling is one of the best ways to experience our beautiful arctic nature and explore the more remote areas of Levi. The snowmobile routes may lead you to the top of a charming fell, where a whole new landscape opens in front of your eyes. You are on the top of the world!

Besides the thrilling drive and breath-taking nature around you, imagine enjoying a cup of hot coffee in the middle of nowhere. Take a break and delight in pure Lappish nature by an open fire. Coffee is prepared the traditional way and served in a kuksa, wooden cup. This drive will take you as close to the wild arctic nature as you can get.

Season: Beginning of the winter season end of November until mid-April, depending on weather.

Duration: We have several different options for snowmobiling from 1 hour safari up to several days.

Language: English

Participants: min. 2 pers.

Services included: equipment (thermal overalls, winter boots, gloves and mittens), meals, transfer and other services depending on the program

Prices:

Net rates on request.



Changes and errors excepted.