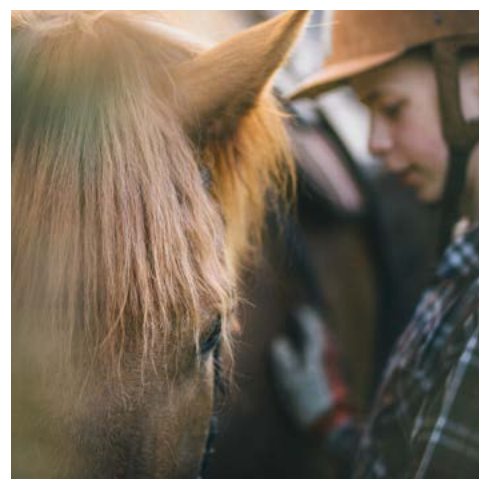


LEVI, LAPLAND

FINLAND 2020-2022





NORDICMARKETING: TOURISM MARKETING FOR NORTHERN EUROPE

WHO WE ARE & WHAT WE DO

NordicMarketing is a tourism marketing agency specialized in Northern Europe. We offer high-quality products from Northern Europe including detailed information about services, net rates for travel trade, direct contact details and diverse visual material for tour operators and incentive agencies.

PRODUCT MANUAL

NordicMarketing's product manuals are valuable working documents for product managers and decision makers of the tourism industry. We gladly present our product manuals personally to you as part of our sales tours.

SALES VISITS

Every year we personally visit numerous tour operators to learn about their current product requests, news and any customer feedback and to present our latest product manuals.

FAM TRIPS

Every year NordicMarketing organizes educational tours to the destinations in Northern Europe. Only tour operators we met before in person on sales visits/ tours are invited to our fam trips.

PRODUCTS, NEWS & PROVIDER ONLINE

NordicMarketing offers numerous products from Northern Europe for travel trade online. Of course, direct contact information of service provider and high-quality visual material for catalogue production and web presence are available online as well.

nordicmarketing.de/en/travel
nordicmarketing.de/en/blog
nordicmarketing.de/en/provider

NEWSLETTER

Every month we send a newsletter with product and tourism industry news from Northern Europe to tour operators in Germany, Switzerland and Austria as well as to Dutch and Belgian travel experts.

nordicmarketing.de/en/newsletter

TEAM GERMANY

Jan Badur
Managing Director
Marlene Geisler
Marketing Manager
Svenja Bedner
Digital Marketing Manager
Jens Schoene
Database Manager
Eva Eckinger
Social Media Assistant
Frederike Hauser
Marketing Assistant

TEAM FINLAND

Greta Tanskanen
Managing Director
Suvi Ahola
Key Account Manager

Contact

NordicMarketing GmbH
Alte Bahnhofstr. 56a
44892 Bochum
Germany
www.nordicmarketing.de
facebook.com/nordicmarketing
instagram.com/nordicmarketing
twitter.com/NordicMarketing
linkedin.com/company/nordicmarketing-gmbh



Jan Badur
Managing Director
Tel. +49 234 54 66 05 55
jan.badur@nordicmarketing.de




Suvi Ahola
Key Account Manager
Tel. +358 50 5464 190
suvi.ahola@nordicmarketing.fi

TABLE OF CONTENTS

PAGE

VISIT LEVI	Destination Levi in Finnish Lapland	4-5
INSIDER TIPS	Recommendations by locals	6
LEVI MAP	Location & arrival	7
KITTILÄ	The Municipality of Kittilä	8
PALLAS-YLLÄSTUNTURI NATIONAL PARK	Sights & activities	9
SUMMER ACTIVITIES	Summer weekly activity programme	10-11
AUTUMN ACTIVITIES	Northern Lights season activity programme	12-13
LUXURIOUS PRODUCTS	High-end accommodation and activities	14-15
ACTIVITIES & SAFARIS		
ARCTIC FRONTIER	Aurora chase™ & Forage, fire & feast	16
ARCTIC HOSPITALITY	Year-round experiences for small groups	17
HALIPUU & CAMPFIRE BARISTA	Cocooning in the Halipuu forest & Campfire barista's fireside experience	18
IMMELKARTANO	Finnish sauna experiences	19
KINOS SAFARIS	Activities on and at the water	20-21
WOLVERINE FELL WILDERNESS AND NATURE	Arctic knowledge hunt & Us and Auroras - dinner at Wolf lake	22
LAPIN LUONTOELÄMYS	Canoe tour on river Ounasjoki & Hiking for pleasure lovers	23
LAPLAND SAFARIS LEVI	Weekly programmes for individual travellers and groups	24
POLAR LIGHTS TOURS	Activities with horses and huskies	25
SKI RESORT LEVI	Adventure Park, Gondoli2000 cabin lift, equipment rental & restaurants	26-27
MUSEUM SÄRESTÖNIEMI	Art museum - the world of artist Reidar Särestöniemi	28
GOLF & COUNTRY CLUB LEVI	Finland's northernmost Golf club	29
DMCs		
POLAR STAR TRAVEL		30
SCANDINAVIAN TRAVEL GROUP		31
RESTAURANT & SUPERMARKT		
KING CRAB HOUSE	Restaurant with red king crab specialty	32
K-MARKET LEVIN PORO	Grocery store with online order and delivery service	33
ACCOMMODATIONS		
VISIT LEVI - CABINS & APARTMENTS	Accommodations in Levi	34
BREAK SOKOS HOTEL LEVI	Hotel rooms in central location	35
NORTHERN LIGHTS RANCH	Sky View Cabins & Restaurant	36
LEVIN IGLUT - GOLDEN CROWN	Glass Igloos, Northern Lights House & Restaurant Aurora Sky	37
HULLU PORO	Hotel rooms, apartments, restaurants & spa in the heart of Levi	38
ELVES VILLAGE	Tonttula Elves Village, Lodge Hotel Taivaanvalkeat, Country House, Elf Hut and new Glass Pyramids	39
HOTEL LEVI PANORAMA	Hotel rooms and apartments at Levi fell, Samiland exhibition	40
LAPLAND HOTELS SIRKANTÄHTI	Hotel rooms and apartments in central location	41
LEVI HOTEL SPA	Hotel rooms, restaurants & spa in central Levi	42
DESIGN HOTEL LEVI	New design hotel in the heart of Levi	43
LEVIKAIRA APARTMENTS	Traditional Lappish log cabins	44
APARTMENTS LEVIN KULTARINNE	Alpine style apartments	45
LEVI ALPINE CHALETs	High-quality chalet apartments	46

A person is silhouetted while standing on a surfboard in the middle of a body of water. The sun is low on the horizon, creating a bright, shimmering reflection on the water's surface that passes through the person. The background features a dark line of trees under a sky filled with soft, orange-hued clouds.

VISIT LEVI ACCOMMODATION & ACTIVITY BOOKINGS



LEVI IN FINNISH LAPLAND

Experience the clean nature, the Northern Lights and the magical midnight sun. Silence, pureness and unique natural environment, unparalleled in the world – welcome to Levi and Finnish Lapland! In Levi, you will enjoy eight seasons, instead of just four.

UNIQUE HOLIDAY DESTINATION

Levi is a unique, all-year round holiday destination in Lapland with a wide range of accommodation and activities. Levi is also an internationally renowned FIS approved ski location with a World Cup level competition. Finland's largest holiday resort is situated in Northern Finland, 170 km north of the Arctic Circle. As part of Scandinavia, Finland is a safe destination to travel to Norway and Russia.

EASY ACCESSIBLE

Levi is an easy-to-reach destination: only 15 - minute drive from Kittilä airport (KTT) and daily connecting flights from Helsinki, which is just a little over an hour flight time away.

DIVERSE NATURE AND ACTIVITIES

The greatest feature about Levi is its variety of nature and activities available during the different seasons. Levi offers amazing wintery scenery in the spring time with Northern Lights until April, the amazing nightless nights during the midsummer, when the sun does not set for 45 days, Northern Lights from the end of August until April, a real white winter with guaranteed snow from November to May and the unique

Polar Nights in December and January during which the sun does not rise above the horizon, but the amazing light paints the sky in a variety of amazing colours. All year round there is a wide range of outdoor activities available which combine the pure, wild nature with world-class services in a modern resort.

EASY ACCESS AND A WIDE RANGE OF SERVICES AND ACCOMMODATION

In Levi everything is easily available and within a close proximity. Restaurants, bars, stores, souvenir shops, the spa centre, beauty treatments, gym and exercise classes, equipment rentals and hiking routes are all within a walking distance from the hotels and accommodations in central Levi. There is plenty to choose from when looking for a place to stay: high-quality hotels, silver pine log cottages, a wide variety of different holiday apartments and different kinds of Northern Lights accommodations to enjoy the night sky and the Northern Lights through a glass ceiling.

SURROUNDED BY NATURE

Nature is always around the corner in Levi. Within a 15-minute drive you can find sublime wilderness and along the way you can observe reindeer grazing. You can discover the unspoiled beautiful nature hiking with a guide, biking or simply by going fishing. Take a panoramic ride in the Gondola cabin lift to the very top of Levi. The landscape with the surrounding fells –

the Lappish mountains - and lakes is breathtaking. Within a one-hour drive you can also reach the Pallas-Ylläs Nationalpark with its wide network of hiking and mountain bike trails.

EXPERIENCES AND ADVENTURES ALL YEAR ROUND

Levi is a year-round destination. In the summer Levi is blessed by the phenomenon of the magical midnight sun. Since the sun doesn't set for 45 days you can -for example -play golf in the middle of the night or go berry picking in the woods – natural, pure superfood for free! In the beginning of September, the leaves begin to change their color creating a spectacle painting the fell scenery with red, orange, yellow and brown. Breathe in the pure air and go for a bike ride or horseback ride, enjoy the hiking trails around Levi and go hunt for the spectacular Northern Lights on various guided trips. When the air gets colder and the ground and trees are covered with a white snowy blanket put on some warm layers of winter clothes and go on a snowshoe trip or snowmobile ride to see the wintery landscape, say hello to the reindeer and huskys in Levi and enjoy the pistes and ski trails. In the spring time enjoy the sun, go ice fishing and explore the winter walking tours and fatbike tours, take part in an exciting aurora hunt, see the nightly scenery with millions of stars and on a lucky night the amazing Northern Lights!

Number of hotels: 8

Number of cottages: 2,500

Capacity: 25,000 beds

Slopes: 43

Skiing tracks: 230 km

Snowmobile tracks: 866 km

Hiking trails: 80 km

Mountain biking trails: 78 km

Year-round services & activities:

Samiland exhibition center, wellness programmes (e.g. spa centre & hot yoga studio), several art museums and galleries, restaurants, bars, after ski, nightlife, stores, souvenir shops, concerts & artists, gyms and exercise classes.

Activity programme for the Northern Lights season (starting in August):

Aurora chase, day trip to the Arctic Ocean in Norway and visit to Saana Fell in Kilpisjärvi, excursion to National Park, canoeing under the Northern Lights, Aurora chase (photography tour), berry picking excursion, cooking workshop, horseback riding, hiking and fishing trips etc.

Weekly programmes in Levi:

Weekly programmes are running all year round, except in May.

You can find out more about the programmes from our website www.levi.fi.

Contact

Visit Levi

Maija Palosaari

Myllyjoentie 2, 99130 Levi

Tel. +358 (0) 20 7352 630/

+358 (0) 40 560 6316

maija.palosaari@levi.fi

levi@levi.fi

www.levi.fi

facebook.com/levilapland

twitter.com/VisitLevi

instagram.com/levilapland

youtube.com/user/VisitLevi

Insider Tips - Must-Sees & Dos in Levi

KATE:

Picnic on a fell.

Breathe the fresh air, listen to the sound of the season and discover why the Lapland is such an exceptional place whilst you look out over the fells. In any season, whether a snowy winter wonderland or under the golden light of the mid-night sun, the experience of enjoying an adventure in Arctic nature and sharing a meal around a fire makes unique memories of your Polar holiday.

PÄIVI:

Hiking in Pallas-Yllästunturi National Park.

HANNE:

Ice Age Trail starts from the courtyard of Hotel Levi Panorama and travels a 9 km route around the Levi fell. The trail features nature trail signs about the Ice Age.

TARJA:

Peak Trail on top of the fell, Santa's cabin next to ski lift no. 10.

HEIDI:

Hiking trip to the top of Särkitunturi fell. At the top, one of the most beautiful panorama to the fells and lakes opens to you. After a refreshing swim in a pure and crystal clear pond at the top of the fell.

RIITTA:

Ruoppaköngäs natural attraction. A formation of rocks and river rapids, accessible in the summertime.

SAIJA:

Get the **best view** over the area by **hiking up to fell Kätkä**.

INA:

Day trip to Pallastunturi. Less than one hour drive from Levi we have the majestic fells of Pallas. During summer and autumn months it's a great place for hiking. The landscapes here are wonderful!

10 FAVOURITE DISHES

- Reindeer ragout with cranberries and mashed potatoes from Lappish Puikula potatoes
- Cloudberry ; fresh from the forest or with vanilla ice cream
- Delicious salmon soup
- Reindeer sausages grilled at the open fire
- Willow grouse and various other game during the hunting season in autumn
- Salmon flambéed at the open fire with baked potatoes
- Open fire coffee with Finnish yeast pastry "Korvapuusti"
- Lapin rieska - Lapin flatbread
- A wonderful spruce bud latte "Kuu-senkerkkälätte"
- a variety of dishes from local ingredients directly from the forest as well as various mushrooms, herbs and berries.

TOP SUMMER ACTIVITIES

Bike: Hop on a bicycle and experience Levi from a whole different level! At Activity Park in Levi, you can try downhill mountain biking, beginners can take part in a fat bike trip and enjoy nature or borrow a village bike.

Golf: Finland's northernmost 18-hole course at Levi Golf offers varied conditions for your game and you can play

even in the middle of the nightless night. More than 93 hectares of beautifully green golf magic by the Levi fell!

By the water: How about a canoe trip in the midsummer, when the sun never sets? Or a fishing trip with friends amidst beautiful scenery in Lapland? Go stand up paddling or relax on a pontoon ferry cruise.

Hike: Explore the nearby trails of the Levi fell or go up and enjoy the scenery from the summit of the Kätkä fell. 60 km of hiking routes with guided trips make it possible.

Activity Park: Levi Adventure Park charms you with high ropes courses and flying with zipline marathons. The area is situated by the Gondola2000 lift 2 km from the Levi Centre and has a restaurant, playing area for children, mini golf course and the Levi Bike Park.

Culture: Visit a local art museum or gallery, learn about the Sami culture at the Samiland Exhibition Centre, go on a guided tour to the fells to learn about local people and ways.

Experience: Take part in one of the many events Levi has to offer during the summer.

TOP AUTUMN ACTIVITIES

Photography: Capture the colours of the foliage and fauna of the fells, hunt the Aurora Borealis. Take a guided tour or go explore yourself.

From the water: Go and see Levi from the water, experience the Double Auroras when they reflect from the water's surface.

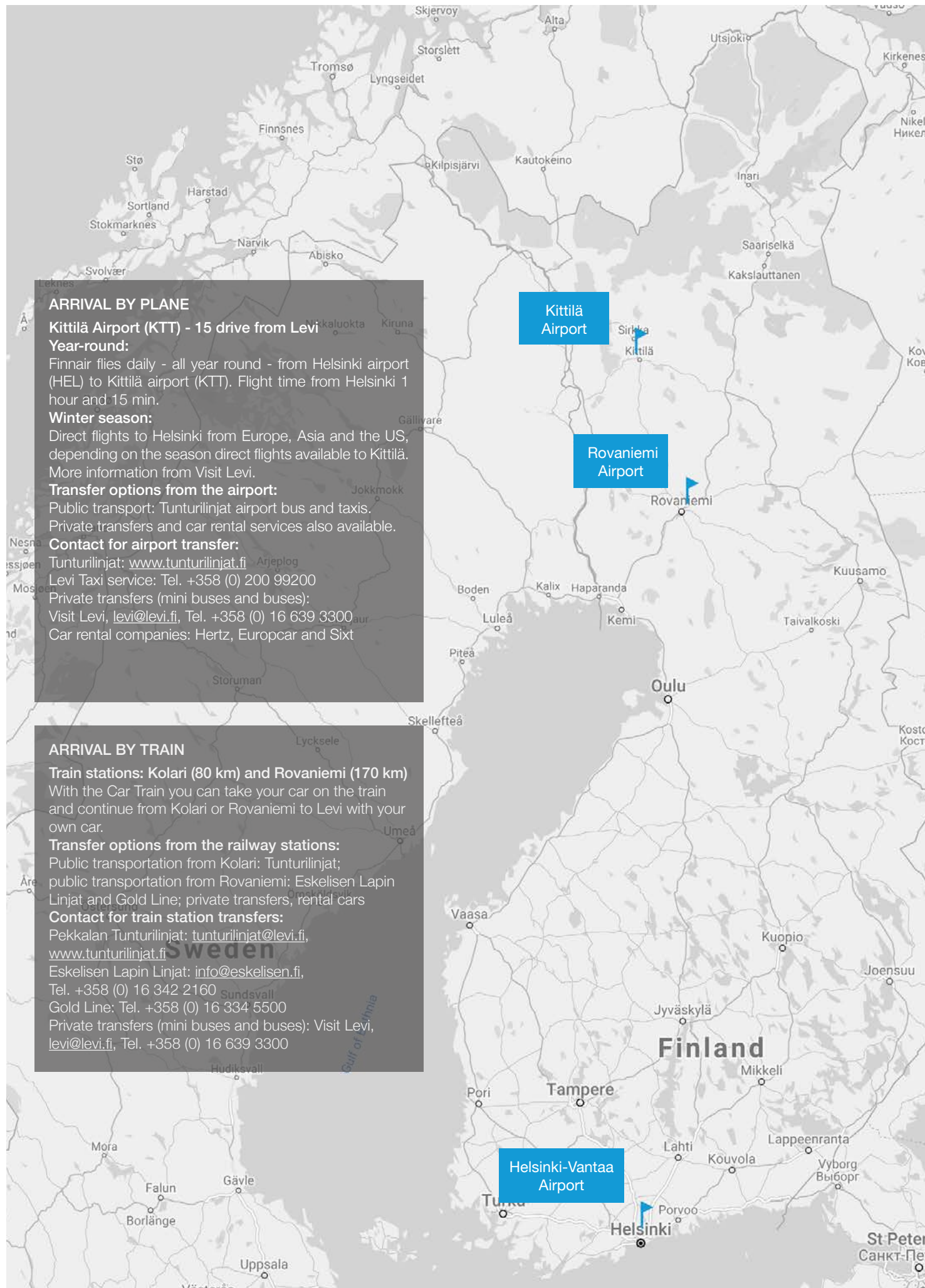
Go explore: Go forage for your food, have a look what nature has on the menu. Pick berries and mushrooms, gather some herbs. On a guided tour you will learn a lot about the edible plants available.

Animals: See how sled dogs spend their day, have a look at what the Lappish nature looks like from horse back or visit the many animals at Elves Village.

Take a trip: Participate in one of the whole day trips on offer: see the Arctic Ocean or visit an Amethyst mine and a Sami village.

Elves Village: An experience village located in Köngäs, 8 km from the Levi centre. The village is open all year round. Go on a trip with the Elf in the Yellow dress, try your luck at gold panning, play some Mini Golf and enjoy what the café has to offer.

Northern Lights: Go hunt for these incredible lights on a variety of organised tours with professional guides to increase your chances to see these amazing lights.



ARRIVAL BY PLANE

Kittilä Airport (KTT) - 15 drive from Levi

Year-round:

Finnair flies daily - all year round - from Helsinki airport (HEL) to Kittilä airport (KTT). Flight time from Helsinki 1 hour and 15 min.

Winter season:

Direct flights to Helsinki from Europe, Asia and the US, depending on the season direct flights available to Kittilä. More information from Visit Levi.

Transfer options from the airport:

Public transport: Tunturilinjat airport bus and taxis.
Private transfers and car rental services also available.

Contact for airport transfer:

Tunturilinjat: www.tunturilinjat.fi

Levi Taxi service: Tel. +358 (0) 200 99200

Private transfers (mini buses and buses):

Visit Levi, levi@levi.fi, Tel. +358 (0) 16 639 3300

Car rental companies: Hertz, Europcar and Sixt

ARRIVAL BY TRAIN

Train stations: Kolari (80 km) and Rovaniemi (170 km)

With the Car Train you can take your car on the train and continue from Kolari or Rovaniemi to Levi with your own car.

Transfer options from the railway stations:

Public transportation from Kolari: Tunturilinjat;
public transportation from Rovaniemi: Eskelisen Lapin Linjat and Gold Line; private transfers, rental cars

Contact for train station transfers:

Pekkanen Tunturilinjat: tunturilinjat@levi.fi,

www.tunturilinjat.fi

Eskelisen Lapin Linjat: info@eskelisen.fi,

Tel. +358 (0) 16 342 2160

Gold Line: Tel. +358 (0) 16 334 5500

Private transfers (mini buses and buses): Visit Levi,

levi@levi.fi, Tel. +358 (0) 16 639 3300



KITTILÄ

SERVICES IN KITTILÄ

Several shops and special stores are to be found in the Kittilä village centre, as well as local food and culture. Municipal and government offices are located here, along with the library. The village also features various indoor recreational facilities, as well as a modern, well-equipped sports hall, the Agnico Eagle ice-hockey arena and high quality soccer field, and, in the winter, there are cross-country skiing tracks in and outside the village. The cross-country skiing track doubles as a running and hiking trail during the snow-free months. There is also an international airport just a few kilometres north of the village.

PLACES OF INTEREST

The wooden church in Kittilä has been designed by Carl Ludwig Engel and it was built between 1829-31. The baroque-style pulpit dates back to 1687. Local history can be viewed at the museum of local history and culture in the Pakatti district, which is open in summertime. Swimming is popular in the summer. Right in the town centre, the Einari Junttila Art Museum and the home of Kalervo Palsa, a local artist are worth a visit. The Karinnokka birdwatching tower and, next to it on the bank of the Ounasjoki river, the Karinnokka shelter, where people can picnic or rest attract bird-watchers & trekkers.

EVENTS

There are lots of events in Kittilä running throughout the year. One of the main events is the traditional summer market in Kittilä centre, organized two weeks after Midsummer. It has been held since the 1600's. Traditionally the market was a place to sell food, tools, make trades, dance and meet people. The market has shaped into modern summer event, but in Kittilä a certain traditional spirit has been preserved.

MORE ABOUT KITTILÄ REGION

The village of Kittilä offers naturally beautiful surrounding to visit, many different kinds of recreational activities and an outdoors lifestyle. There are lots of ways to spend your free time – outdoor activities, excursions, tours, cultural offerings and sights – and many different kinds of accommodation. The main village Kittilä and its surrounding smaller villages give you the peace and quiet of the countryside combined with a close-knit village community, together with several annual events organized with the help of active residents. The villages offer a peaceful and safe environment to visit, near the developing international centre that is the activity resort of Levi.

There are not four, but eight seasons of the year in Kittilä, each with its own mood, colours and scenery: ranging from the dark of the polar night to the glorious midnight sun, and

from the peak of a buzzing, flowery spring to the dazzling hues of autumn. Visitors and local residents alike are captivated by the magnificent highland fells and the grand Ounasjoki river that runs through the region and shapes its scenery. The municipality of Kittilä spans over a huge area: between its northernmost and southernmost villages lie more than 140 kilometres of sweeping vistas and breathtaking scenery.

The municipality of Kittilä includes Levi, one of the most popular year-round ski and activity resorts in Finland, and features Europe's biggest gold mine. Many destinations can be reached from its international airport through its flight connections year round. In the tourist season, there are flights arriving daily from Finland and the rest of Europe. Internationality plays a significant role in the economic life of the Kittilä municipality, which lies above the Arctic Circle. There is also a high density of businesses here: roughly 600 enterprises in the municipality give it one of the highest commercial densities in Finland. The development of tourism and mining in Kittilä has created a modern and international atmosphere in the municipality, yet the traditional way of life still exists in many of the region's villages, also remaining present in their culture, art and events. There are many artists' homes and other interesting sights to see in the area.

Contact

Municipality of Kittilä
Valtatie 15, 99100 Kittilä
Tel. +358 (0) 40 035 6500
kirjaamo@kittila.fi
www.kittila.fi
facebook.com/kittilankunta
twitter.com/Kittilankunta
youtube.com/channel/UC2laGFs1PKsLV-To3k1EWJcQ

Number of hotels: 1
Number of cottages: 14
Capacity: 180 beds
Skiing tracks: 80 km
Hiking trails: 10 km
Population: approx. 3,000

Location: The village of Kittilä is located in the geographic middle of the municipality. From here, it is about 150 km to Rovaniemi and 960 km to Helsinki. The Swedish border at Kolari is about 76 km away and the Norwegian border at Enontekiö roughly 190 km away. It is about 86 km to the town of Sodankylä.

Winter activities: sports hall, ice-hockey rink, cross-country skiing tracks

Summer activities: running and hiking trail, swimming

Other activities & services: several shops and special stores, local food and culture, library, indoor recreational facilities, church, museum of local history, Einari Junttila Art Museum, artist home of Kalervo Palsa, Karinnokka birdwatching tower and shelter

Airport: Kittilä (5 km)

Railway station: Rovaniemi (150 km), Kolari (70 km)



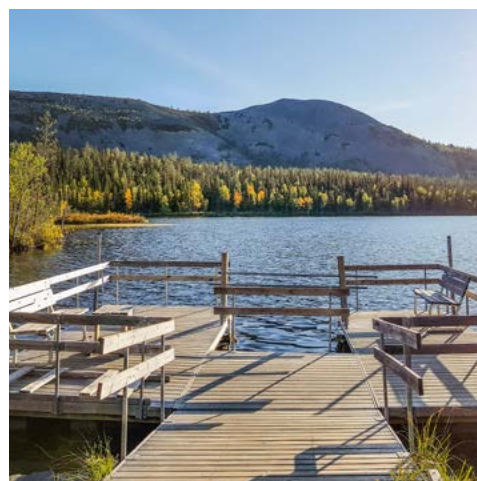
© Juuso Ritari



© Heikki Sulander



© Juuso Ritari



PALLAS-YLLÄSTUNTURI NATIONAL PARK

VISITOR CENTRES

The Visitor Centres in Fell Lapland are convenient starting points for hikes. They also offer information about the national park's nature, history, flora and fauna. You can do day trips to the Visitor Centres from Levi with organized trips with local companies or independently by car.

NATURAL ATTRACTIONS

Admire the 100 km long mountain range from several scenic viewpoints along the trails. Most of the scenic trails in the national park are also easily reached by car.

See the National Park's fells, ravines, crystal clear lakes and rivers and herb rich forests along the nature trails. There is a lot to learn during those trips. "Pyhä" means holy in Finnish. Guess how many holy places like "Pyhäjärvi" or "Pyhänturi" you find in National Park?

Most typical animals in the National Park are reindeer, moose, brown Bear and otter. From various bird species the Siberian Jay is a common guest all around the National Park. One tip for you: During long lasting summer days and nightless night Pallas is the best place to take photos of reindeer and blossoming arctic fell plants in open fell landscape.

ENJOY YEAR-ROUND OUTDOOR LIFE

Magical 8 seasons in Finnish Lapland will make unforgettable outdoor experiences. Enjoy walking, hiking, fatbiking, XC skiing, snowshoeing and many other activities on a well-maintained trail network covering more than 500 km. Have a break in wilderness cafes along the trails.

Our co-operative sustainable companies guide you to the best possible trips in the wilderness. They also rent quality bikes, skis and other gear if needed.

SUMMER TRAILS NEAR LEVI

Pallastunturi Taivaskero Trail: 3-4 h walk takes you to the highest peak of national park. Wonderful views of fell range is an experience that you won't forget. From Levi: 55 km.

Särkitunturi Trail: 2 h easy climb to fell top from where a magnificent view of the fell Pallastunturi and lake Särkijärvi – awarded as National Landscape in Finland – opens up. From Levi: 46 km.

Aakenus Haavepalo Trail: 4 h walk where you hear the wilderness. Scenic trail with view of broad mires and Yllästunturi fell. From Levi: 31 km.

Ylläs-Levi Mountain Biking Trail: Rent a bike and a guide if you like and challenge yourself on a 5-7 h bike trip! Trail connects the two resorts with each other. From Levi: 0 km.

Established: 1938/ 2005

Area: 1,020 km²

Sustainability: A member of the EURO-PARC Federation. Rewarding in best practice in Sustainable Travel & Tourism. World Travel & Tourism Council: Tourism for Tomorrow Destination Award 2017 Finalist.

Services: Year-round campfire sites, lean-tos and cafés by scenic spots. Free nature, culture and art exhibitions in Visitor Centres. Co-operating businesses offers guided tours, transport, rentals, catering etc.

Events: Marathon skiing, trail running, mountain biking and lots of local events

Contact

Pallas-Yllästunturi National Park
Yllästunturi Visitor Centre
Tunturintie 54, 95970 Äkäslompolo
kellokas@metso.fi

Pallastunturi Visitor Centre
pallastunturi@metso.fi

Hetta, Fell Lapland Visitor Centre
tunturi-lappi@metso.fi

www.nationalparks.fi/pallas-yllastunturi
facebook.com/PallasYllastunturinKansallispuisto
instagram.com/finnishparks



Summer Weekly Activity Programme Season

The Summer Weekly Activity Programme is available from 01.06.-25.08.

Languages

English

Participants

Minimum amount of participants is 2 persons unless otherwise stated in the programme description.

Booking information

Programmes can be booked online on the Visit Levi web page www.levi.fi or by email levi.info@levi.fi by 4 pm the day before.

Contact

Visit Levi

Enna Paavola

Myllyjoentie 2, 99130 Levi

Tel. +358 (0) 50 511 0107

enna.paavola@levi.fi

www.levi.fi

facebook.com/levilapland

twitter.com/VisitLevi

instagram.com/levilapland

youtube.com/user/VisitLevi

SUMMER-WEEKLY ACTIVITY PROGRAMME

SUNRISE.BLINK.SUNSET.

In the summer, sunlight paints the top of Levi fell and wakes you up gently in the morning — or even in the middle of the night. The midnight sun never sleeps. It shines around the clock for 45 days. This is the perfect time for canoe trips, sauna in the early hours of the morning or for picking flowers to cast Midsummer spells.

The Summer Weekly Activity Programme offers entertainment for the whole family! Take advantage of 24 hours of daylight, breathe in the purest air of the inhabited world, relax yourself and enjoy the stunning unspoilt Lappish nature. There is something to do for every day of the week.

SPLASH OF ARCTIC WATERS

How about a canoe trip during the midnight sun? Or a fishing trip with friends amidst beautiful Lappish scenery? There are over 700 lakes in and around Levi to choose from. Enjoy the scenery from the water or go for example on a comfortable pontoon ferry cruise on the lake. For the adventurer there is also a thrilling ride in a car inner tube down the river rapids. After an exciting day out there is nothing better than the relaxing heath of a Finnish sauna, refreshing swim in the Arctic waters and the absolute silence around you.

HOP ON A BICYCLE

At the Levi Activity Park, you can try downhill mountain biking on the west side of the fell. All the equipment you need is available for rent. Beginners are also welcome to join for the adventure. If you enjoy more peaceful activities, you can take part in a fat bike trip. Around Levi, there are many kinds of different routes to go biking and explore the nature. The experienced and locally knowledgeable guides know where to take you and will show you Levi's best angles.

MEET THE CHARMING ANIMALS

Experience the Lappish nature on horseback, see how the sled dogs spend their summer holidays during a visit to a Husky farm or see the cute animals at the Elves Village. There are horseback riding excursions available either on Finn horses or Icelandic horses, length ranging from one hour to a few days. At the Elves village you can enjoy a round of Miniature Golf or Disc Golf, go on a guided tour with the Elf in the Yellow Dress and hear the story about the Elves and their lives.



EXPERIENCE THE ARCTIC OCEAN, LOCAL NATIONAL PARK AND ARCTIC SUPER-FOOD- LEARN TO PHOTOGRAPH THE BREATHTAKING NATURE

Why not combine your visit in Levi with a visit to beautiful Norway and the Arctic Ocean? Visit Levi's weekly programme offers a day trip to the Arctic Ocean in the town of Skibottn in Norway with a stop in Kilpisjärvi to visit the famous Saana fell. For those wanting to learn more about the Lappish Nature, there are guided tours offered where the guide will tell you about the flora and fauna of Lapland, show you edible berries and mushrooms depending on the season and how to cook of the foraged ingredients. The amazing and peaceful nature offers many opportunities for photography lovers. Go on a guided tour and learn how to capture the best shot for your Instagram!

CULTURAL EXPERIENCES

Kittilä and Levi have a lot to offer for culture lovers. Near Levi there is the chance to get to know the life works of many well-known local artists like Reidar Särestöniemi, Kalervo Palsa and Einari Junttila. The Studio and Art Gallery of Reidar Särestöniemi is in the village of Kaukonen in Kittilä. The exhibitions in the unique museum area changed yearly and there are many of his works on display. In addition to the Art Gallery many events and concerts take place at the Museum.

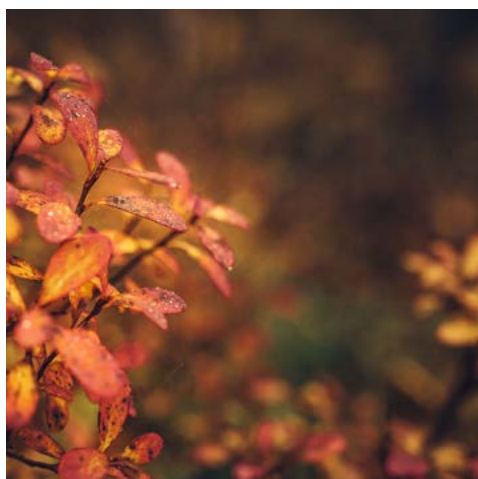
The works of Reidar Särestöniemi are displayed in the clothes of the Finnish Clothing Brand halo.

Kalervo Palsa's critical works are shown in the Palsa Museum in the Centre of Kittilä. The artist worked with a variety of techniques and materials. His works have been compared to those of Frida Kahlo.

Einari Junttila, born in Kittilä, was an internationally known and acknowledged lyrical realist, who was especially known as a water-colour artist. He also worked with oil paint and in pastel. Junttila is the earliest known artist from Kittilä and he was true to his calling in interpreting the Lappish nature. The Einari Junttila Art Museum is open on Thursdays.

THE SAMILAND EXHIBITION CENTRE AT LEVI SUMMIT

Samiland is part of the UNESCO Observatory Cultural Village Programme. The Centre tells the story of the Sami people's thousands of years old history, culture and mythology. At the indoor exhibit the differences between the Skolt Sami and the Mountain Sami are explained, the traditional sources of livelihood of the Sami people are shown and the ancient mythical creatures of Sami culture are presented. The exhibit outdoors shows Sami buildings and tells about reindeer herding.



Northern Lights Season Activity Programme

The Northern Lights Season Activity Programme is available from 26.08.-30.11.

Season

English

Participants

Minimum amount of participants is 2 persons unless otherwise stated in the programme description.

Booking information

Programmes can be booked online on the Visit Levi web page www.levi.fi or by email levi.info@levi.fi by 4 pm the day before.

Contact

Visit Levi

Enna Paavola

Myllyjoentie 2, 99130 Levi

Tel. +358 (0) 50 511 0107

enna.paavola@levi.fi

www.levi.fi

facebook.com/levilapland

twitter.com/VisitLevi

instagram.com/levilapland

youtube.com/user/VisitLevi

NORTHERN LIGHTS SEASON PROGRAMME

NORTHERN LIGHTS SEASON ACTIVITY PROGRAMME

What do the Northern Lights sound like? What does the rich spectrum of autumn colours look like on fells and in the forests in the North? When winter nears, nature dresses in its most vibrant colours. Autumn colours paint the fells. As far as the eye can see, the forests turn beautiful shades of orange and red. It is time to slow down, meditate, walk in a forest and breathe the fresh autumn air.

TAKE A PHOTO OF YOUR EXPERIENCE

The autumn colours in Lapland are breathtakingly beautiful. Make memories of a lifetime and take pictures of the playful colours, the falling leaves and the Northern Lights. On our guided trips, professionals will give you tips for nature photography and show the best angles. Find out more about Levi with various guided trips that will take you by foot, on bike or in a canoe to the most beautiful places that Lapland has to offer.

DOUBLE AURORAS - ONCE IN A LIFETIME EXPERIENCE

Did you know, in Lapland, you can see the Northern Lights as early as late August? Visit Levi offers a wide selection of excursions, for you to catch this magnificent natural phenomenon. How about a cruise on a pontoon ferry under the Auroras? Enjoy the view from the ferry over the quiet lake, only trees and fells around you. If you wish to taste Lappish Food, enjoy nature's silence and an impressive view over the lake, then take part in an excursion to a private lake with dinner served in a traditional hut by the shore. With a bit of luck even Northern Lights will dance in the sky. The adventurer can go on a canoe trip in the late evening to go search for the lights or go on a horseback ride and see the Arctic nature and Northern Lights from yet another perspective.



HARVEST TIME AND ARCTIC SUPER FOODS

When the summer days get shorter and autumn is on its way, it is time for harvesting. This is the best time to explore more remote areas of Levi and the superfoods there! You can pick cloudberries and many other delicacies straight into your mouth. Take part in a guided trip and see for yourself! Go and explore the Pallas-Yllästunturi National Park with a knowledgeable guide, learn how to cook your meal from ingredients found in nature, or go on a guided hike in Levi to find out more about the Lappish nature.

SPEND SOME TIME WITH ANIMALS

During the autumn times nature shows its most beautiful side with its brilliant colours. Seeing the Lappish scenery from horse back during a ride is most of the most calming experiences you can have in nature. Experience the charming fourth gait tölt of Icelandic horses and listen to the silence around you. Whether you go during the daytime to admire fell scenery around you or in the evenings to search for the Northern Lights, a horseback ride is always exciting.

A visit to a husky farm is something not to miss during visit to Levi! During the autumn times the dogs are still on their holiday, enjoying the down time before the winter season. The guided visit gives a lot of information of the day-to-

day life on a husky farm, of the history of sled dogs and the history and practices involving mushing – the driving of a sled dog team.

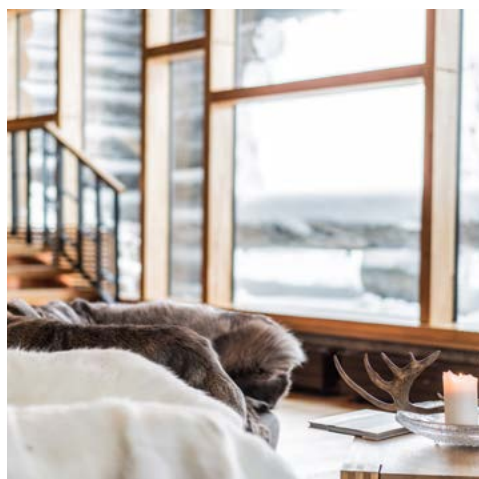
During a visit at the Elves Village in Königs remember to say hello to the many animals. Some of the inhabitants of the Village are reindeer, sheep, chicken and horses. During a guided Walk with the Elf in the Yellow Dress you will hear many interesting things of the different inhabitants of the nearby forests, river and barns.

THINGS TO DO FOR THE WHOLE FAMILY

During the crisp autumn days, the Levi village is full of things to experience and explore. A ride up the Levi fell with either the Express Gondola lift or the Gondola2000 lift to the top of the fell gives you an amazing view on a clear day over the whole Centre of Levi and the surrounding fells and lakes. Go hike around the fell on the marked trails or all the way down, go down with a Summer Sled or take the stairs from the Hotel Panorama. Keep your eyes open and search for the famous Santa's Cabin from the Christmas Story Movie. By the foot of the fell by the Gondola2000 station is the Activity Park area with its many possibilities to spend the day for both young and old. The Children's Traffic Park, Miniature Golf Course, Disc Golf course and of course the Adventure Park with its many Adventure Courses will make sure there's not a dull moment. The more adventur-

ous ones can borrow a village bike or rent a fat bike and go explore by themselves or go on a guided tour around the beautiful scenery of Levi. After an eventful day spent outside there's nothing more relaxing than going to the sauna or spend an afternoon at the Levi Spa in a jacuzzi or in one of the sauna's comfortable warmth.

Learn about the forest, its inhabitants and edible plants on a guided tour for the whole family or spend a day on the water paddling or fishing. Levi has a lot to offer, come and let Levi Spark Your Soul!



Example activities for tailor-made packages:

Summer: Trekking, canoeing, biking (enduro, down hill, fat and mountain biking), husky park visits, tours, cooking courses, 18-hole golf course, Gondola cabin lift sightseeing, Finnish sauna experience and swimming, Pontoon cruise on the lake, jet ski safaris.

Winter: Northern Lights programmes, visits to ice hotels, ice sculpting, photography tours, winter rally driving, ice karting and snow cat trip, reindeer safaris, kick sledging, skiing, visits to Lappish shaman and Elves Village, helicopter flights, winter laser world -games, wilderness skills programme, wine tasting, wilderness cooking course, Lappish ceremony and kota dinners.

Contact

Visit Levi
Enna Paavola
Myllyjoentie 2, 99130 Levi
Tel. +358 (0) 50 511 0107
enna.paavola@levi.fi
www.levi.fi
facebook.com/levilapland
twitter.com/VisitLevi
instagram.com/levilapland
youtube.com/user/VisitLevi

EXAMPLE: HIGH-END ACCOMMODATION

SILVER PINE VILLA

This 500 m² luxurious log cabin is located on top of the Utsuvaara fell and offers traditional Lappish comfort in a very modern stylish design. Suitable for 14 people.

Facilities: 7 bedrooms and 14 single beds. On the first floor (entrance floor) a lobby, separate toilet and one bedroom with two single beds, maintenance room, sauna department with fireplace room, dressing room, spacious sauna, bathroom with three showers and a toilet.

On the second floor there is a living room, dinner table for 18 persons, kitchen, three bedrooms with two single beds/ bedroom. Two of the bedrooms have an en suite with a shower and a bathtub. On the third floor there are two bedrooms with two single beds per bedroom and an en suite with a shower and a bathtub and one bedroom with a mini kitchen, sauna, en suite and two single beds.

LUXURY ALPINE CHALET APARTMENT

A magnificent high quality 250 m² alpine style chalet apartment with balconies facing the skiing slopes. This high-class accommodation offers top level equipment and finest décor with high quality modern textiles and furniture. Suitable for ten people.

Facilities: five bedrooms and ten single beds. Apartment in an alpine style house on two floors. Downstairs two bedrooms, upstairs three bedrooms (two single beds/ bedroom),

toilets: four separate toilets: two on each floor, saunas: two electric saunas and two showers in both bathrooms.

All bedrooms and the two saunas have their own balcony. The apartment is suitable for disabled. Bar kitchen upstairs.

LUXURY VILLA

These 236 m² Villas blend subtly into the background. All villas are similar in appearance, yet individual in their interior decoration. Stone, wood and glass – the best of nature's materials – make up the elements of this modern architectural design. The exquisite décor is finished off with the finest fabrics and furnishings. A specialty of the villas is an atmospheric "kammi", which is a traditional Sami earth lodge, with an open fire. Suitable for ten persons.

Facilities: four bedrooms with ensuite bathrooms and a loft bedroom with twin or double beds. A large living room with a fire place, dining room, open kitchen, two balconies and on the 1st floor there is also a unique, large non-heated room kammi with an open fire place, a bar where simple meals can be served.

DESIGN LOG CABIN

This 300 m² design log cabin is located near all the services of Levi. It is made of high-quality materials and is a combination of good design and beauty. This log cabin is filled with Finnish design. Suitable for 12 people.



AND ACTIVITIES

Facilities: six bedrooms and 12 single beds. Four bedrooms with an en suite, two bedrooms on every floor and two separate toilets downstairs, a big electric sauna, a steam sauna, a bathroom with three showers, dressing room and a spacious room with a fireplace. Ski maintenance room, terraces towards the south and north. A roomy yard.

PRIVATE HUSKY SAFARI

Find the real nature of Lapland and experience a snowy adventure with the racing sled dogs. A sled dog team will take you on an about 15 to 20 km ride through the snowy land of the Pallas-Yllästunturi National Park (two persons in the sled, self-driven). On the way, we will have a break in a forest teepee "kota". During the lunch of creamy salmon soup and while drinking hot juice you will find out more about a sled dog's life. During the trip, you can spend time with the dogs and take photos.

Season: 1st of December until middle of April. Weather dependent.

Duration: approx. 3 h

Languages: English

Participants: 2-10 pax

Services included: guided husky tour (2 pers./ sled; both steering in turns), creamy salmon soup, warm cheese bread, warm juice/coffee/tea and Finnish bun

Optional services: transfers, private cook, Santa Claus, clothing

PRIVATE MEETING WITH FATHER CHRISTMAS

In Finland Christmas means peace and tranquility, cozy white surroundings and the magical excitement of meeting Father Christmas!

Option 1: This is your once-in-a-lifetime chance to invite Father Christmas to your own accommodation! Spend a joyful time with him, listen to his fascinating stories about Christmas times and the elves and take memorable pictures with him.

Option 2: You may otherwise prefer to discover Santa's secret nest, meet Him privately and see his elves at their workshop. Playing with the elves, baking ginger biscuits and a short reindeer ride with Santa are some of the magical delights awaiting you! An experience not to miss!

Season: beginning of November-end of March
Duration: depending on the programme, 30 min. to 2 hours.

Languages: English

Participants: depending on the programme min. 2 pax - max. up to 500 pax

Services included: depending on the programme

Optional services: depending on the programme

DISCOVER LAPPISH NATURE PRIVATELY ON A SNOWMOBILE

Snowmobiling is one of the best ways to experience the beautiful arctic nature and explore the more remote areas of Levi. The snowmobile routes may lead you to the top of a charming fell, where a whole new landscape opens up in front of your eyes. You are on the top of the world!

Besides the thrilling drive and breath-taking nature around you, imagine enjoying a cup of hot coffee in the middle of nowhere. Take a break and delight in pure Lappish nature by an open fire. Coffee is prepared the traditional way and served in a kuksa, a wooden cup. This drive will take you as close to the wild arctic nature as you can get.

Season: end of November until mid April, depending on the weather.

Duration: several different options from a one-hour safari up to several days

Languages: English

Participants: min. 2 pax

Services included: guided tour, equipment (thermal overalls, winter boots, gloves and mittens). Meals, transfer, accommodation and other services included vary depending on the programme.



Arctic Frontier

Arctic Frontier specialises in creating interesting experiences for interesting people in our own backyard of Lapland. We share our passion for light, photography and wild food with your guests on our tours. Capture the wonders of the aurora and experience the best of local Arctic wild foods. Our local knowledge of the area, wheather watching skills and our ability in finding the Northern Lights make us one of the most successful Aurora experiences in the Arctic. Join us and discover the unique colours and favours of the Arctic.

Founded: 2016

Sustainability: Local company, local guides, professionally trained guides, belonging to local business and social networks, strong connection to the environment, low waste, minimal use of plastic, minimal use of single use products, use of recycled products where possible, use of reusable products, locally sourced food from ethical and environmentally responsible companies, use of sustainably sourced local wild food, use of organic products where possible, use of locally sourced products where possible, low impact on environment with activities, guidelines of National Parks both environmental and cultural are followed and shared with our guests.

Season: year-round

Languages: English

Offered activities: Northern Light photography tours, cooking workshops, wild food and foraging activities, winter picnics, photography tours and 'how to photograph' lectures.

Contact

Arctic Frontier
Kate de Bruin & Juha Tolonen
Levi
Tel. +358 (0) 46 659 6443
mail@arcticfrontier.fi
www.arcticfrontier.fi
facebook.com/arcticfrontier
instagram.com/arcticfrontier



ARCTIC FRONTIER

AURORA CHASE™

Arctic Frontier can help make your guests' Aurora dreams come true. Last season, 85% of our guests captured their own moments under the Northern Lights.

All photography equipment is provided and no prior photography experience is needed. We will show you how the rhythms of the Aurora are enhanced with a few simple camera techniques. The photographs and memory card are yours to keep.

We 'chase' the aurora in comfort and take you to our secret places, and go where others can't! The chase includes warm clothing, our famous home made cloudberry brownies and warm berry drinks made with local wild foods we have collected during the growing season. We share our love of light and the Arctic with you and your guests.

Season: September until mid-April

Duration: 4-5 h

Languages: English

Participants: max. 8 pax/ group

Minimum age: 12 years

Starting point/ time: Zero Point, Sept. 21h, Oct.-March 20h

Services included: Transfer, all photography equipment, arctic winter suits and winter wool lined boots, famous warm dark chocolate brownies with wild Arctic berries and hot home-made berry juice, professional guides

FORAGE, FIRE & FEAST

Discover what you can eat in the forests in Lapland! Taste the wild foods growing in the pure environment of the Arctic's sun filled months. Join us on a guided foraging tour and share the ultimate fireside picnic, made with rare and unique Arctic ingredients.

We take you to our special places where we can collect wild food. We share our knowledge on how to identify edible foods and collect your own super forest foods. During the season we can find lingonberries, cranberries, juniper berries, herbs and some varieties of mushrooms. Wake up your taste buds with a chagga mushroom coffee! Try our home made berry drink, made with 4 different berries that we've picked for you. Our wild food based lunch is cooked by the fire using locally sourced and foraged ingredients. Including local breads, wild mushrooms and nettles. Followed by our famous warm dark chocolate brownies with Arctic berries.

Season: June until November

Duration: 4-5 h

Languages: English

Participants: max. 8 pax

Minimum age: suitable for all ages

Starting point/ time: Zero Point, 10h

Services included: Berry and mushroom picking equipment, baskets and rubber boots if required, fireside picnic lunch, guide



ARCTIC HOSPITALITY

EXPERIENCES FOR SMALL GROUPS

Arctic Hospitality provides whole day experience packages in Levi for small groups with a maximum of 8 people. Our goal is to offer our clients individual service, unforgettable wow-experiences and authentic adventures in Finnish Lapland.

YEAR-ROUND OFFER

We in Arctic Hospitality provide all types of summer, autumn and winter experiences such as meeting Santa, husky rides, reindeer rides, traditional sauna experiences, making food in wilderness, hunting for Northern Lights, conquering the fells, etc.

We focus on whole day packages instead of one activity experiences. We also focus on individual guiding and group hosting in Levi area.

PROGRAMMES FOR EVERYONE

Our target groups vary. Some of our whole day experiences are made for families such as meeting Santa or reindeer rides. Others are for the explorers such as Sami museum visits, visiting the local Sami family, etc. Others focus on sport- and extreme seekers such as white river rafting or snowshoeing/ skiing on fells.

Founded

2018

Sustainability

Our company takes sustainability very seriously as we are surrounded by national parks and pure nature. We recycle everything, do not use plastic or paper cups or plates, etc. We are always looking for ways to improve a sustainable way to provide services to our customers and only work together with companies that are same minded as Arctic Hospitality.

Season

year-round

Languages

English, Estonian, Russian, German (basics)

Contact

Arctic Hospitality
Mait Kivisaari
Sompiontie 37
99130 Sirkka
Tel. +358 (0) 40 501 5229
mait@arctichospitality.com
sales@arctichospitality.com
www.arctichospitality.com
facebook.com/arctichospitality
instagram.com/arctichospitality



Halipuu & Campfire Barista

Halipuu is an award-winning, family-run, sustainable activity company, dedicated to sharing our beautiful, peaceful forest with our visitors. We operate with small groups to give our guests personal attention and life changing nature experiences with the highest standards. Welcome - our forest is your forest.

Founded: 2015

Sustainability

Halipuu was established to save a forest from felling. Carbon-negative, creating new ways of bringing sustainable income from a forest. All our guides are locals, we use self-foraged berries and home-made, local foods. Our activities do not harm the eco-system, using renewable energy sources and reusable ecological picnic-ware etc.

Season: year-round

Languages: English, German, Dutch, Swedish, Spanish on request

Offered activities:

Hammocking & forest experiences, coffee and campfire experiences, art experiences and artist visits.

Contact

Halipuu
Riitta Raekallio-Wunderink
Ounasjoentie 17
99130 Sirkka
Tel. +358 (0) 44 236 3745
riitta@halipuu.com
info@halipuu.com
www.halipuu.com
facebook.com/halipuu
instagram.com/halipuu
youtube.com/channel/UCgVcuOYgg3tb-re_xl7zmvTw



HALIPUU & CAMPFIRE BARISTA

COCOONING IN THE HALIPUU-FOREST

Welcome to the peaceful world of Halipuu. Forget your worries and experience the forest from a new perspective - snuggled in a cozy hammock, breathing the purest air on the planet and listening to the sounds of the Arctic. This is what Lapland is about!

Award winning peaceful forest trip to the Halipuu-family's forest, including guided walk filled with stories and interesting information, hammock cocooning experience and a campfire moment with a home-made snack.

Season: year-round. **Duration:** approx. 2 h

Languages: English, German, Dutch, Swedish, Spanish on request

Participants: 2-20 pax

Starting point/ time: Muoniontie 952, Veitservasa, Kittilä (10km from Levi); week programme Thu./Fri. at 11 h, private groups as agreed

Services included: A guided walk to the forest and back with calming exercises. Hammock cocooning. Campfire experience. Small groups with personal attention. Hammocks and blankets, warm black currant juice and a snack.

Optional services: Campfire barista's Arctic latte with home-made lingonberry marshmallows & cookies

Note: During snowless seasons, please bring your own insect protection and wear sturdy walking shoes/ rubber boots.

CAMPFIRE BARISTA'S FIRESIDE EXPERIENCE

Halipuu's Campfire Barista brings you the flavours of Lapland with a modern twist. The intriguing tales of coffee, the artisan beans from a local roastery, crystal clear well water and the smoky heat of a campfire combine to make the best lattes north of the Arctic Circle. Campfire Barista's coffee drinks and other beverages are served with home-made sweet treats. Additional foods and drinks can be ordered as an extra.

The Campfire Barista brings his coffee magic to any campfire place (guest's cottage, public campfire hut etc.).

Season: year-round. **Duration:** approx. 1 h

Languages: English, German, Dutch, Swedish

Participants: max. 20 pax. (bigger groups per arrangement)

Starting point/ time: as agreed

Services included: Guide, specialty coffees, teas, Chaga-Chai-Lattes and other hot drinks prepared on a campfire, home-made lingonberry marshmallows and cookies.

Optional services: Savoury snacks, campfire pancakes, bun-on-a-stick & other options available as pre-bookable extras.

Note: A campfire place and the firewood can be provided by the customer or brought on-site by Campfire Barista for an extra charge.



IMMELKARTANO

FLOATING SAUNA BOAT

Enjoy a memorable sauna safari on the waters of Lake Immeljärvi on our floating sauna boat. Gaze over the land while bathing under the midnight sun or during the autumn while the forests are covered with the vivid Arctic fall colors.

TRADITIONAL SMOKE SAUNA

Traditional smoke sauna on the lakeshore of Immelkartano provides a mystical "löyly" – a combination of heat, steam and atmosphere, which is highly prized by sauna aficionados because of the deep relaxation it delivers. Complete the sauna experience by cooling off in the lake Immeljärvi and admire the Northern Lights or the midnight sun in the outdoor hot bath.

SAUNA EXPERIENCE

Saunas are suitable for 30 persons at the time (=1.5 h), so 60 persons will take 2x 1.5 h = 3 h. The price includes towels, shampoo & soap. Beverages available as agreed. Refreshments are served also at the restaurant Riihi before and after the sauna.

Optional: Arctic ceremony where mind and body purges in a Sami lake and participant gets a wooden Lappish cup, schnaps – kuksa, as a souvenir.

Dinner at handsome restaurant Riihi with Lappish delicacies according to your choice.

ACCOMMODATION

Two story log house Kartano Chalet with 280 m² can accommodate up to twenty people. There are three double rooms on the first floor and five double rooms (four of them with an extra bed) on the second floor.

The log house is surrounded by Kätkä fell and is on the shores of lake Immeljärvi. The scenery is impressive and ever changing.

RESTAURANT RIIHI

The handsome Riihi is a rustic restaurant lodge that provides an authentic Lapland atmosphere for its guests. The menu at restaurant Riihi is based on traditional Lappish specialties. The lodge restaurant is open around the year on request.

Immelkartano

Immelkartano by the lake Immel offers activities for groups of 4-60 people around the year. Finnish sauna and swimming in the fresh lake water is a true Arctic experience.

Founded

1996

Sustainability

Geothermal heating is used. Only reusable goods are used.

Restaurant uses local ingredients. Recycling for glass, metal, cardboard and electronic waste.

Partnerships with local entrepreneurs, priority use of local and fair trade suppliers.

Languages

English

Season

01.01.2020-31.12.2022, around the year on request.

Accommodation

Log house (280 m²) with eight double rooms

Offered activities

Floating sauna, traditional smoke sauna with hot bath, sauna with hot tub, Restaurant Riihi, conference room, Kartano Chalet, snowmobile safaris, snowmobile rental

Contact

Immelkartano
Saija Rantakokko
Tuomikuruntie 136
99130 Levi
Tel. +358 40 741 0071
info@immekartano.fi
www.immekartano.fi
facebook.com/immekartano
instagram.com/immekartano



Kinos Safaris

Kinos Safaris offers a wide selection of unforgettable all-year-around excursions, including snowmobile safaris, ferry cruises, ATV safaris and canoeing, fishing and SUP-boarding trips. We also have a wide rental services for different kinds of equipment, such as snowmobiles, snowshoes, e-bikes, canoes, rowboats, SUP boards, and fishing gear. We have a weekly programme that consists of shorter trips from 2 to 3 hours, but we also arrange tailored trips up to several days of length.

We are located in the central Finnish Lapland near the Kittilä airport.

Founded: 2003

Sustainability

We offer local food and use local companies as our safari visits, we try to protect our environment as well as we can, we always take care that we never leave any trash into the nature, and we try not to disturb wild animals. We also advice our customers to behave the same way when they go out into the nature.

Season

year-round

Languages: English, German

Offered activities: Snowmobile safaris and snowmobile rental, canoeing safaris and canoe rental, fishing trips, ferry trips, SUP-boarding trips, ATV safaris and rental, e-bike rental, jet ski rental depending on the water situation

Contact

Oy Kinos Safaris Ltd

Mika Kuusela

Myllyjoentie 4

99130 Sirkka

Tel. +358 (0) 50 403 2000

info@kinossafaris.com

www.kinossafaris.com

facebook.com/kinossafaris

instagram.com/kinossafaris



KINOS SAFARIS

FERRY CRUISE

During this trip we will enjoy the beautiful sceneries while cruising around the lake Sirkkajärvi and Levijärvi. We will also bake sweet crepes and drink some hot coffee by the fire. It is also possible to go for a swim in the lake and after that warm up in the sauna. During autumn time we might also get to admire the Northern Lights in the sky, and enjoy the cozy and dark fall atmosphere by the fire. This trip is offered in our weekly programme, but by request we can also arrange tailored trips for private groups. Food can also be arranged by request.

Season: 01.06.-10.10. every year

Duration: 2-3 h

Languages: English

Participants: 4-40 pax

Starting point: The meeting point is at the Kinos Safaris office in Myllyjoentie 4, 99130 Sirkka. Customers will be transported to the lake Sirkkajärvi where the trip starts.

Services included: Transfer from Kinos Safaris' office to the lake Sirkkajärvi.

Optional services: Sweet crepes + coffee or juice, sausage or other meals.

Note: No meals are included in our weekly programme cruises. In tailored packages the meals can also be included, and the price of the trip will depend on this.



CANOEING TRIP

Canoeing is a perfect way to enjoy the clean waters and the beautiful sceneries of Lapland. In Levi area we have several types of wilderness rivers that offer canoeing experiences of different length and level of difficulty. Shorter canoeing trips can also be arranged at the beautiful and calm lakes of Levi area where it is possible to just relax and enjoy the day with the whole family.

Season: 01.06.-30.09. every year

Duration: From 2-3 hours to several days depending on the trip of choice.

Languages: English

Participants: 4-40 pax

Minimum age: No minimum age is required, depending on the chosen location/ river.

Starting point: Several different rivers and lakes, depending on the possibilities and the customer's request.

Services included: Transfer to the starting point of the chosen trip, guide

Note: Included meals and overnight stays are depending on the length of the trip



FISHING TRIP

Come and experience fishing in the pure waters of Lapland. We arrange fishing trips of different type and length in the wilderness rivers and lakes of Levi area. There are multiple different fishing methods, such as casting, fly-fishing and trolling, and also various catches, including grayling, trout, arctic trout, pike, perch, whitefish and salmon.

Season: 01.06.-30.09. every year

Duration: From 3 hours to several days

Languages: English

Participants: 4-40 pax

Starting point: Various locations

Services included: Transfer, fishing equipment, guide

Note: Included meals and overnight stays are depending on the chosen trip.

ATV SAFARI

In this safari it is guaranteed that you will have fun and gain new experiences, as well as enjoy the nature of Lapland! We will first change into our driving gear at the office, then start the ATV's and head to the forests and swamps. Be prepared to get dirty! The distance of the safari is around 5 kilometers, and the safari will last for 2 hours. We will have a small juice break in between.

Season: 20.04.-30.11. every year

Duration: 2 h

Languages: English

Participants: 4-40 pax

Minimum age: 4 years

Starting point: Starting point is at Kinosa Safaris' office in Myllyjoentie 4, 99130 Sirkka.

Services included: Transfer, driving gear, juice, guide

ACTIVITY DAY AT LAKE KIVIJÄRVI

Welcome to spend an extraordinary activity day at lake Kivijärvi! This activity day is suitable for people of all ages and fitness. The customers will be transported by bus to the lake Kivijärvi, which is located 40km North from Levi center. Kivijärvi is a private, untouched wilderness lake with wonderful sceneries, forests and swamps. At the lake we will spend an informal activity day with possibilities to go fishing, rowing, canoeing or hiking into the nature. In addition we have our own private tepee in our use. During the day we will also fish with a tow seine, and if we catch fish, it will be prepared by the fire. A sandwich, a salad and a sausage with juice and coffee is also included.

Season: 01.06.-30.09. every year

Duration: 6 h

Languages: English

Participants: 5-80 pax

Minimum age: No minimum age. This product is suitable for all ages.

Starting point: Starting point is at Kinosa Safaris' office in Myllyjoentie 4, 99130 Sirkka.

Services included: Bus transfer, fishing equipment, canoes, rowboats, fishing license, meals (sandwich, salad, sausage, coffee and juice), guide



Wolverine Fell Wilderness and Nature

The family owned business organizes day adventures for nature lovers in privately owned forests, bogs and lakes near Levi.

Founded: 2000

Sustainability

The local forest is maintained to support suitable habitat for species such as capercaillies or black grouse by creating living space for insect life that their offspring feed on. Between March and October we use sun collectors to generate electricity.

Season: operating between August-June

Languages: English

Offered activities: Reindeer, ice-fishing, snowshoeing tours, Northern Lights trips, exploring nature, hiking, kicksleding, hunting, dinners near the privately owned lake.

Contact

Wolverine Fell Wilderness and Nature Ltd./
Kätkätunturin Erä ja Luonto Oy

Petra Babovakova

Kittilä

Tel. +358 468 101 400

kael@levi.fi

reindeerandfishing.fi

[instagram.com/wolverinefellwilderness-](https://www.instagram.com/wolverinefellwilderness-nature)

[nature](https://www.youtube.com/channel/UCB9b-x1iB_C4cWFwUm7t3_Q)

[youtube.com/channel/UCB9b-x1iB_](https://www.youtube.com/channel/UCB9b-x1iB_C4cWFwUm7t3_Q)

[C4cWFwUm7t3_Q](https://www.youtube.com/channel/UCB9b-x1iB_C4cWFwUm7t3_Q)

WOLVERINE FELL WILDERNESS AND NATURE

ARCTIC KNOWLEDGE HUNT

Explore the arctic nature of the forest in the middle of nowhere by foot or on snowshoes. Look out for waypoints by using a little paper map you receive from us. Google maps is an alternative option. By scanning the QR codes along the way you learn more about plants, animals and the fragile environment. At the end you will be served a snack (e.g. elk burger/ meat pie or something similar) inside of the hut. You have time (1.5 to 2 h) to explore the forested hill in the middle of a vast bog in your own pace. If needed, there will be a guide to assist you. The length of your chosen walk can be between 1.5 km and 5 km.

Season: Aug.-June. **Duration:** 3.5 h or longer.

Languages: English **Participants:** 4-20 pax.

Minimum age: 6 years

Starting point/ time: Kätkäjärventie 407, Sirkka (when the ground is snow-covered) or 1.5 km further towards Wolf Lake (if there is no snow, approx. June-Oct.), between 8-11 h

Services included: Paper map with marked points of interest, snowshoes when the ground is snow-covered (approx. Dec.-April). Snack with hot juice, coffee or tea is offered towards the end of the tour, guide.

Optional: Meals for groups starting from 10 pax, souvenirs

Note: Participants need to come with weatherproof gear including sturdy footwear.

US & AURORAS - DINNER AT WOLF LAKE

On the shore of the private Wolf Lake you can enjoy a Lappish 3-course meal in peace with your friends or family. Be ready to be disturbed by a sudden call "There they are! The Auroras!". The hut is situated about 15 km from Levi in the wilderness. Due to the location the chances to admire the Northern light from the frozen lake are high on a clear night. Before the lake freezes it is also possible to see the auroras on the calm water surface. There is no light pollution besides some candle light inside the hut. During the courses you can set out on a short (15 min.) snowshoe walk with a guide (Dec.-April). Alternatively you stay in the warm hut or on the lake.

Season: Dec.-April with possible snowshoeing break; Aug.-Nov. without snowshoeing.

Duration: approx. 2.5 h

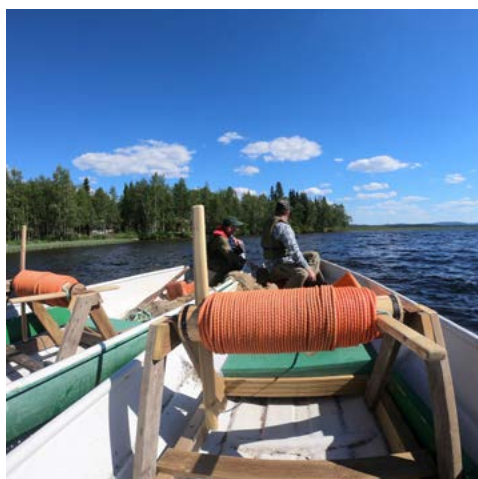
Languages: English **Participants:** 2-25 pax.

Minimum age: 6 years (as it is an evening tour)

Starting point/ time: Kätkäjärventie 407, Sirkka (when the ground is snow-covered) or 1.5 km further at Wolf Lake if the road is still open, between 17-19.30 h

Services included: Transfer in a sled pulled by a snowmobile, snowshoe rental in winter, 3-course-meal and non-alcoholic drinks, guide

Note: Allergies need to be informed of well ahead of time.



LAPIN LUONTOELÄMYS

CANOE TOUR ON RIVER OUNASJOKI

Paddling is an easy way to travel in the wilderness. We meet at Levi from where we have a transportation to Taivaanvalkeat. We will have a small tour in the yard and enjoy the Lappish architecture. Before we start to paddle, the guide tells about the paddling technique. Down the river we go!

We paddle along the Ounasjoki river to Hirvasniemi, where we grill sausages. The bravest ones will have an opportunity to swim in the pure water of River Ounasjoki.

Our trip continues to Hossansalmi, where the transportation is waiting to take us back to Levi.

Season: 15.05.-15.10.

Duration: 2.5 h

Languages: English

Participants: 4-30 pax

Minimum age: 7 ears

Starting point: Levi Information Center

Starting time: 18 h

Services included: Transfer, equipment, juice and snack, guide

HIKING FOR PLEASURE LOVERS

The pleasure lover takes the gondola up to the Levi fell in order to enjoy the view without much physical strain.

We will start at Levinportti and walk along the beautiful route at the fell side to the Gondola lift which takes us to the top of Levi. We will visit the top of Levi (531 meters above sea level) and view the spectacular scenery. On our way down, we will stop at a Lappish hut for a coffee break with grilled sausages. The trip will then continue at a leisurely pace towards the front slope. On the way down, the guide will enliven the journey with stories of the Lappish way of life.

Season: 15.05.-15.10.

Duration: 2.5 h

Languages: English

Participants: 3-50 pax

Minimum age: 7 years

Starting point: Levi Information Center

Starting time: 13 Uhr

Services included: Equipment, juice and snack, guide

Lapin Luontoelämys

We have different kind of activities on winter and summer time. The common denominator is that you have an experienced guide with you at all times and you get memorable experiences in the wild and beautiful nature of Northern Finland. We also do a lot of collaboration with local businesses, so that we can always offer qualified and diverse activities.

Founded: 1997

Sustainability: We have local tour guides who all have a sense of responsibility towards the environment. In addition, we reuse the equipment.

Season: 15.5.2019-15.5.2022

Languages: English

Offered activities: canoeing, river rafting, SUP trips, hiking, fatbike trips and foraging trips

Contact

Lapin Luontoelämys

Raija Raiski Palosaari

Ounasjoentie 810

99140 Kõngäs

Tel. +358 (0) 40 716 3033

raiski@levi.fi

lapinluontoelamys.fi

facebook.com/elamyksialuonnossa

instagram.com/lapinluontoelamys



Lapland Safaris

Lapland Safaris, part of the Lapland Hotels and Safaris group, has been working in close co-operation with the international travel trade to create unique, year around experiences in Lapland since 1982.

Founded: 1982

Note: family-run company

Sustainability: Lapland Hotels and Safaris has an own sustainability programme and reports this yearly. For example we use local suppliers both for hotel and safari businesses and we have invested in new 4-stroke snowmobiles to reduce the emissions. We are also following and taking action to minimize the consumption of power and water.

Season: year-round

Languages: English

Offered activities: Biking, hiking, husky farm visits, midnight sun tours, summer cabin programmes, pure air and national park tours, canoeing, sup-boarding, auro-
ra hunting, snowmobiling, reindeer and husky safaris, snowshoe, cross country skiing and ice fishing tours, SnowVillage excursions and year around rental services.

Informationen & rates: Please contact us for further details about all of our individual and group programmes, equipment rental services and all prices.

Contact

Lapland Hotels & Safaris

Lapland Safaris Levi

Maria Astrén

Leiviraitti 26, 99130 Sirkka

Tel. +358 (0) 40 484 1680

maria.astren@laplandsafaris.fi

levi@laplandsafaris.fi

laplandsafaris.com

facebook.com/LaplandSafarisLevi

instagram.com/laplandsafaris

twitter.com/laplandsafaris

youtube.com/channel/UCg4xN0G75XWl-zISQDm6X16g



LAPLAND SAFARIS LEVI

WEEKLY PROGRAMME FOR INDIVIDUALS AND TAILOR MADE ITINERARIES FOR GROUPS

Whatever the group size, our focus is on offering heartfelt personal service, and unique adventures to experience our pure Lappish nature, and the highlights of Levi and its surroundings. Our weekly programme offers guaranteed guided departures, year around, for a minimum of 2 participants. Below are just some of the highlights, with many more options available on a guaranteed basis. These programmes as well as many others can also be arranged privately for groups.

SUMMER AND AUTUMN PROGRAMMES

Explore the outdoors and discover the local nature by bike, or on foot. With our experienced guides, conquer one of the many peaks in the surrounding Fell Lapland region; which is a true hikers paradise! Explore the lush forest trails and best viewpoints by fatbike, or enjoy a relaxing, leisurely tour with the help of our electric bikes. Alternatively fill your lungs with Europe's purest air while enjoying a fireside snack and hiking in the Pallas National Park!

Discover like a local and meet the adorable friendly huskies, or spend a traditional day or evening at a Finnish summer cabin. You will be able to relax during a boat ride on crystal clear waters, pick berries from the silent forest, try your hand at fishing, and bathe in a traditional Finnish sauna under the midnight sun.

Hunt for the Lights. Whether you're looking to experience the bright, "Nightless Nights" during summer's Midnight sun season, or catch a glimpse of the breathtaking Aurora Borealis during the autumn or winter there is a memorable tour to experience these Arctic phenomena.

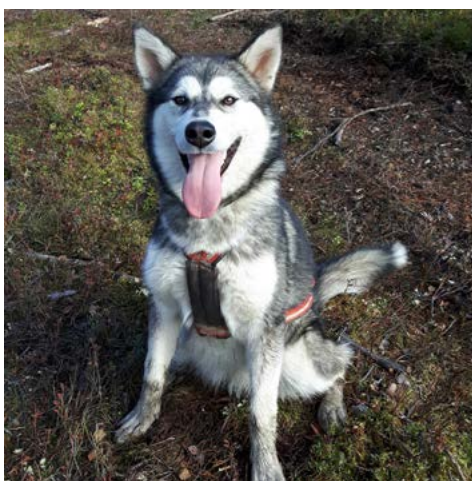
WINTER & SPRING PROGRAMMES

In the winter our weekly programme is jam packed with snowmobile, reindeer and husky adventures, snowshoe tours, ice fishing and Northern Light hunting trips. A definite highlight is a memorable trip to Lapland Hotel SnowVillage, which has been covered widely in the press for its spectacular Game of Thrones themed sculptures during the last 2 winter seasons.

RENTAL EQUIPMENT

For those who prefer to explore the nature by themselves, Lapland Safaris rental service offers a wide selection of outdoor equipment for rent around the year.

Having a comprehensive and professional collection of equipment available in resort avoids the hassle of extra luggage and packing. Choose from seasonal clothing, rucksacks, hiking equipment, a selection of bikes including fat bikes and electric bikes, canoes, sup boards, snowshoes, back country and cross-country skis and much more.



POLAR LIGHTS TOURS

ON THE PATHS OF NIGHTLESS NIGHT OR SEARCHING FOR NORTHERN LIGHTS ON HORSEBACK

Nice two hours horseback riding trip in forest paths during the evening. In the beginning of summer, we enjoy the glow of the midnight sun, and in darkening autumn evenings we have good opportunities to see the Northern Lights. During this trip we listen to the sounds of nature, take deep breaths of fresh forest air, relax, and watch the phenomena of arctic sky. We have a break by a shelter and enjoy traditional "pan coffee" by open fire. This atmospheric trip is suitable for beginners as well as advanced riders. Please note, no guarantee of seeing Northern Lights.

Season: 01.07.-31.10.

Duration: approx. 2 h

Languages: English

Participants: 2-7 pax

Minimum age: 8 years

Starting point: Polar Lights Tours husky and horse farm

Starting time: Tuesday-Saturday at 20 h

Services included: Riding helmet, coffee/tea/ juice and biscuit, guide

HIKING WITH A HUSKY

We welcome you to our authentic family-owned horse and husky farm! Enjoy the nature while hiking with energetic husky dog on a forest path. During this hike our guide tells you about the life of huskies, their life cycle and training. This is a very nice way to get to know this active hard worker of the winter. We might even have some puppy dogs in the kennel for you to pet. And depending on the time of arrival we may have the chance to pick berries, the superfood from the pure, unpolluted forest.

Season: 01.07.-31.10.

Duration: 2-3 h

Languages: English

Participants: min. 2 pax

Minimum age: 8 years

Starting point: Polar Lights Tours husky and horse farm

Starting time: Tuesday-Saturday at 11 h

Services included: Coffee/ tea/ juice and snack, guide

Polar Lights Tours

Polar Lights Tours is an authentic family-owned horse and husky farm, started 2008. At our farm you will meet our friendly huskies and original Finnhorses, in winter time also reindeer. In summer and in autumn you can enjoy the Lappish nature with us on horseback, by hiking, picking berries or paddling through clear waters! During winter, we provide high quality programmes with huskies, horses, reindeer and snowshoes. We also offer in all seasons a possibility to spend a night in Aurora wilderness cabin, surrounded by nature and with a chance to see the Northern Lights from the comfort of your bed.

Our goal is to provide safe, memorable and unique nature experiences to customers of all ages and backgrounds. We also provide customized programmes and welcome private groups, luxury travelers and visitors with special needs.

Founded: 2008

Note: family-run company

Sustainability: Qualified local tour guides, who have a sense of responsibility towards the environment, use of reusable nature materials for picnics and lunches, use of local food and other products, activities do not harm the eco system, animal and human welfare in all operations.

Season: year-round

Languages: English

Offered activities: Husky safaris, reindeer rides and safaris, horse sleigh rides, horseback riding, hiking, canoeing, snowshoe trips

Contact

Polar Lights Tours Oy

Päivi Hiukka

Muoniontie 955, 99130 Levi

Tel. +358 (0) 40 413 9248

info@polarlightstours.fi

polarlightstours.fi

facebook.com/polarlightstours

twitter.com/PolarLightsTour

instagram.com/polarlightstours



Ski Resort Levi

Levi Ski Resort Oy Ltd is the leading ski resort in Finland with year-around activities. Our location in Lapland offers mid-night sun, pure air and relaxing holidays. The product catalog consists of sporty summer activities like adventures and panoramic lift runs. Our cafes and restaurants are also open year around. In winter our services include ski passes, international ski school, rentals and international Brand Stores. Levi is a FIS Alpine World Cup resort.

Founded: 1974

Sustainability: International ISO14001 certificate for environmental work, recycling, led lighting at slopes, a hybrid snow groomer, automated snowmaking and optimized slope maintaining with SnowSat to save energy and water, staff awareness and training of environmental values, active landscaping to prevent erosion, free village bikes for customers to replace cars, electric cars in use. More info:

www.levi.ski/en/environment

Employees: 60-350

Languages: English

Season: summer June-mid October, winter November-April

Offered activities: Adventure Park, cabin lifts, summer sledging, disc golfing, downhill biking and enduro trails, minigolfing, tennis

Contact

Levi Ski Resort Oy Ltd
Sales Office
Hissitie 8, 99130 Sirkka
Tel. +358 (0) 20 796 0200
leviskiresort@levi.fi
www.levi.ski
facebook.com/Levi.ski.Global
instagram.com/levi.ski
youtube.com/leviski_global



LEVI SKI RESORT

LAPPISH STYLE ADVENTURE PARK

Adventure Park charms you with high ropes courses, flying with Santa's zipline marathon and crazy Base jump. This centre of adventures is located next to a fell pond and offers several courses from easy ones to challenging ones. 2 adventure courses of which the higher one goes to 8 meters. 3 ziplines between the elements. Marathon consists of 10 ziplines of which the longest one is over 100 meters long. On your way you will meet Santa's Cabin - this time above all at height of 10 meters. The total length of the marathon is 888 meters. Base jump is for those who have courage enough to step over emptiness. You climb up to a tower of 12 meters dressed up with harness to take the crucial step.

You are dressed up with safety equipment at the rental of Activity Park. Courses are suitable for all adults and children (min. 120 cm) with basic physical condition.

Season: June-mid-Oct. (on request in May)

Duration: 2 h. **Languages:** English

Participants: 1-100 pax, minimum age 6 yrs

Starting point: Gondolitie 1

Starting time: Park is open daily 10-18 h.

Services included: Harness, helmet and gloves. Staff instructs every adventurer on safety matters before they get on courses.

Optional services: Coffee or lunch break, renting bikes or equipment for disc golfing or minigolfing

LAPPISH VIEWS FROM CABIN LIFT

Gondoli2000 cabin lift runs with a convenient speed along the western side of fell Levi going as high as 20 metres above the ground. The altitude difference between upper and lower stations is 302 meters. The sightseeing tour takes about 20 minutes and it is possible to get out of the cabin at the top to wander around the fell. Interesting visiting places are renovated restaurant Palovartija with terrace and a Peak Trail for sightseeing and picnic. The 600-meter Peak Trail goes clockwise around the very top of fell and is suitable also for persons with wheel chair. In addition to breath taking views to western Lapland it offers sitting areas and a fireplace for a picnic. Another cabin lift Express runs from the village centre to the top of Front slopes, next to Hotel Panorama and congress center Levi Summit and culture centre Samiland. You may enjoy a ride with summer sled when returning to the village.

Season: June-mid-October

Duration: 20 min.

Languages: English

Participants: 1-100 pax., minimum age 6 yrs

Starting point: Gondolitie1

Starting time: Lifts are open daily 10-18 h.

Services included: Gondoli2000 ride

Optionale Services: Coffee or lunch break, adventure park, renting bikes or equipment for disc golfing or minigolfing



EQUIPMENT FOR ACTIVITIES

Our 2 rentals offer equipment for fun summer activities at Levi. Rental of Activity Park provides downhill and enduro bikes with protection gear. Levi Bike Park has several speedy tracks for downhill and enduro bikers. Also equipment for easy disc golfing and mini golfing are rented.

Rental at Zero Point in the middle of the village has a big selection of bikes with many sizes: fatbikes, e-bikes, mountain and road bikes. The resort offers biking tracks for over 50 km and the distance to the National Park is only 40 km.

Season: June-mid-October

Duration: from 2 h

Languages: English

Participants: 1-30 pax

Minimum age: 6 years

Starting point: Activity Park Rental address Gondolitie 1, Zero Point Rental address Hissitie 8

Opening hours: daily from 10-18 h

Services included: Rental equipment according to sport

Optional: coffee and lunch breaks, lift runs

RESTAURANTS IN LEVI

Gondoliravintola is a cosy slope-side restaurant. Its sunny terrace is an ideal place for taking a rest and enjoying the Lappish sun. The restaurant is located at the lower station of the Gondoli 2000 cabin lift next to the Levi Activity Park.

Gondoliravintola offers various cafeteria products and an abundant buffet. The buffet table hosts a plentiful salad bar and a daily selection of warm food and desserts. The location of the restaurant offers a unique and magnificent view to the famous Levi Black slope and fell Kätkätunturi.

Restaurant Draivi is located at the base of lift no. 6 (Northeast slopes), right next to Levi golf course. During summer time Draivi serves travellers and golf players in many ways. Enjoy the daily summer buffet, delicious cafeteria products or taste local Lappish beers. **Paviljonki House** is situated on the golf course after the hole 12 and it serves snacks and beverages. www.levigolf.fi

You can find **Cafe Zero** in the Zero Point building which is located in the centre of the village. Here you can meet your friends and group, take a break and enjoy crispy salad, salty snack, cold and warm beverages. Our glazed terrace provides the opportunity for observing Lappish nature and people. Thanks to the central location it is easy to reach Cafe Zero by walking.

Levi Restaurants Oy

Season: Gondoliravintola and Cafe Zero year-around, Restaurant Draivi June - mid-October (golf season)

Opening hours: Please check websites.

Capacity: Gondoliravintola 270, Restaurant Draivi 80, Cafe Zero 60

Services included: Gondoliravintola: lunch buffet and cafeteria products
Restaurant Draivi: lunch buffet and cafeteria products
Cafe Zero: cafeteria products

Note: Dogs allowed on the terrace.

Parking places: Gondoliravintola, Gondolitie 1 many places
Restaurant Draivi, Golfväylä 9 approx. 100 places

Cafe Zero, Hissitie 8 limited amount

Contact

Levi Restaurants Oy

Salla Tapojärvi

Hissitie 8, 99130 Sirkka

Tel. +358 (0) 20 796 0200

salla.tapojarvi@levi.fi

www.levi.ski/en/sloperestaurants

facebook.com/Levi.ski.Global

instagram.com/levi.ski



Founded: 1985
Employees: 5
Languages: English
Season: 2.1.-29.12., closed on Sundays, Mondays and public holidays.
Opening hours: 12-18 h

Contact

Särestöniemi Museum
 Anne Koskamo
 Särestöntie 880, 99110 Kaukonen
 Tel. +358 (0) 40 136 1112
anne.koskamo@sarestoniemenmuseo.fi
info@sarestoniemenmuseo.fi
www.sarestoniemimuseo.com
facebook.com/sarestoniemimuseo
instagram.com/sarestoniemimuseo

SÄRESTÖNIEMI MUSEUM

The Särestöniemi Museum in Kaukonen, Kittilä, displays the art and working environment of Reidar Särestöniemi (1925-1981), who was the best known Finnish artist and the most remarkable Lappish artist of his time.

THE WORLD OF ARTIST REIDAR SÄRESTÖNIEMI

Särestöniemi Museum by the river Ounas is a unique combination of art, architecture, nature and history. It tells the story of how a farmer's boy, Reidar Särestöniemi became an internationally successful painter, described as the Lapland's answer to Picasso. Särestöniemi got his inspiration from the surrounding nature. The spring flowers bloom in his paintings, the midnight sun is glowing red, the frosted birches stand in the glimmering light of a winter's day. The willow grouse represents the vulnerable side of the artist, whereas the embracing bears and seals symbolise love.

The Museum environment consists of several buildings. The family farm from the 19th century represents the traditional way of building in the North of Finland, whereas the wooden gallery and the studio, both designed in the 1970's by the acclaimed Finnish architects Reima and Raili Pietilä, join the tradition of modern Finnish architecture and its ideal of harmony with the surrounding environment.

The Museum is protected, defined as culturally and historically important built heritage. The Museum office building includes a café and a museum shop.

GUIDED TOURS IN THE MUSEUM

Season: according to opening hours

Duration: between 1-1.5 h

Languages: English

Participants: starting from 10 pax, groups smaller than 10 on request

Services included: Tickets to the museum, tailored guided tour, coffee and home-made bun

Optional services: lunch, for example salmon soup

Provider: Museum Särestöniemi



LEVI GOLF & COUNTRY CLUB

NORTHERNMOST GOLF CLUB IN FINLAND

The course is situated in the beautiful natural terrain between Levi fell and the Ounasjoki river. The Taalojärvi lake, situated inside the course, brings additional challenges to playing as well as an extravagance to the course atmosphere. In the main building – the Club Building - are the Pro Shop, office, Caddie master spaces as well as the Restaurant Draivi, dressing rooms with showers and the Member's Club with a sauna. In the clubhouse there is a year-round practice area with a golf simulator with versatile game and practice possibilities. In addition to practicing the game, beginners can familiarize themselves with the secrets of golf either on their own or with friends. You can spend your free time amongst good company while getting some functional exercise and enjoying the warmth of the sauna. The driving range practice area and short game area are found nearby the clubhouse. Welcome to the Levi Golf & Country Club!

GOLFING UNDER THE MIDNIGHT SUN

Play golf in the northernmost golf club in Finland under the Midnight sun. For 45 days the sun does not set at all and you can play even the whole night. The Golf Course is situated in a beautiful mountain scenery between Levi fell and Ounas river. While playing golf you might even run into reindeers on their daily walk. The rules on the Levi Golf course have even been adjusted due to the many encounters with reindeers.

Founded

2006

Season

01.06.-06.10.

Languages

English

Offered services

Golf club (18 holes), Driving range, short game practice facilities, PGA golf instructor, rental clubs, sauna, lockers, restaurant, club fitting, pro shop, golf carts.

Note

Green fees and accommodation packages available through Visit Levi and local hotels.

Contact

Levi Golf & Country Club Oy

Tomi Tolsa

Golfväylä 9

99130 Levi

Tel. +358 (0) 40 544 2646

tomi.tolsa@levi.fi

golf@levi.fi

www.levigolf.fi

facebook.com/levigolf

instagram.com/levigolf



Founded: 1999 (Polar Meetings), 2009 (Polar Star Travel)

Note: family company

Sustainability: Our priority is to work in a sustainable way all year round. We collaborate with local companies and use local products as much as possible. We recycle our waste. During our excursions and safaris we use cutlery made by recycled material as much as possible. We use an electricity provider who partly uses green energy. Our water consumption is minimized. We respect the sensitive arctic nature, animals and flora.

Season: year-round

Languages: English, Swedish, French, Italian, Dutch, Russian

Services: Holiday houses and cottages, weekly programme for excursions summer, autumn and winter for FIT, tailor made programmes for groups and incentives, weddings, transfers, guides tours-

Note: The Levi Wellbeing Summit will take place in Levi in September 2020.

Contact

Polar Star Travel/ Polar Meetings
Heidi Jokela

Torikuja 10A, 99130 Levi

Tel. +358 (0) 10 325 4044

heidi.jokela@polarstartravel.fi

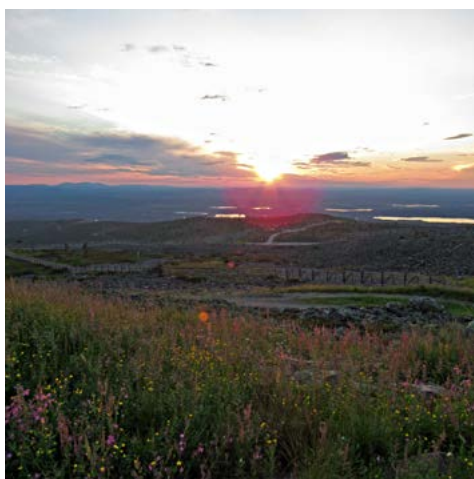
sales@polarstartravel.fi

www.polarstartravel.fi

facebook.com/polarstartravel

instagram.com/polarstartravel

youtube.com/channel/UCsX5RBpB5O-XuSMCeHAG_j9A



POLAR STAR TRAVEL

LOCAL DMC

We are a local destination management company (DMC) that has operated in Lapland since 2007.

SERVICES

We specialize in holiday packages, weekly programmes, premium customized holidays, nature-based wellbeing programmes and organise meetings and congresses. We offer a wide range of accommodation from small cozy apartments in Levi center to luxurious wood Chalets.

We are a family company that is committed to ensuring that your holiday will be a dream come true. Our professional and enthusiastic team will provide caring and high quality service on every day of your holiday.

You can experience Lapland's unique nature in all our programmes. We live according to the seasons of the Arctic, respecting the Lappish environment. Our customers' safety and wellbeing is our number one priority.

ACCOMMODATION

We offer a wide range of apartments in the center of Levi, beautiful log houses within walking distance to Levi center, traditional Finnish log cottages around Levi fell and luxurious wooden chalets.

WEEK PROGRAMMMES

Our weekly programme offers guaranteed departures in winter, summer and autumn. Our professional guides serve in 10 languages.

Our group department will help you to find the most suitable programme for your groups. In summer programmes available under mid-night sun, in autumn double Aurora hunting, berry picking, hiking, etc. Programmes available to Pallas-Yllästunturi National Park. Authentic Finnish sauna programmes. Private meetings with Santa.



© Janita Kenittä



NORDIC DESIGN STORE

Finnish and Nordic design gifts

PENTIK®
aarikka
iittala®
JUHLS

Just around the corner next to King Crab restaurant

SCANDINAVIAN TRAVEL GROUP

DMC & INCOMING AGENCY

Scandinavian Travel Group is a family business with management living in Levi and Rovaniemi. The DMC operates in Lapland and the office in Levi center is open all year-round. STG is an incoming tour operator to Finland & Scandinavia.

ALL-INCLUSIVE PACKAGES FOR FIT & GROUPS

STG produces own local activity programmes and excursions and offers own apartment accommodations in the center of Rovaniemi.

FITs and Luxury: unique experiences with full services

Groups and business travel: transfers, accommodation, excursion and activity programmes.

ACTIVITY PROGRAMMES & EXCURSIONS

- Northern Light programme (September-April): Visit to Polarman's camp, Northern Light check.
- Snow & Ice programmes (December-March): Aurora hunters igloo camp, Build your own snow igloo, Interactive programme "Frozen".
- Original North legends and Saami programme: meet the shaman and joik performance in a teepee (kota) by the lake-side.
- Snowshoeing programmes.
- Day-trips from Levi: North Norway - King crab safari, ICEHOTEL 365 Jukkasjärvi, Norwegian Lapland – Kautokeino with reindeer race and Juhls silver gallery visit, Rovaniemi – the Santa Claus Village, Ranua Zoo.
- Special Christmas and New Year programmes for families with children.
- Ski guiding and ski-school.

Founded: 2005

Note: family-run company

Sustainability: Visit to Polarman's camp programme: no use of electricity, wood-heated fireplace, reusable recycled cups, no waste water.

Season: September-April

Languages: English, German, Spanish, Russian

Services: Own production of local activity programmes and excursions, guiding, ski guiding and ski-school, food catering, events, transportation services: own luxury minibus Mercedes V-class (7 seats), Sprinter (19 seats), bigger coaches, own apartment accommodation in the center of Rovaniemi.

Contact

Scandinavian Travel Group
Lucy Pushchina
Mariankuja 6 / Torikuja 5
99130 Sirkka
Tel. +358 (0) 40 051 4533
sales@gostg.fi
incoming@gostg.fi
gostg.fi/en
facebook.com/gostg.levi
instagram.com/gostg.levi
youtube.com/channel/UCu5mAidO8xc-jHo4TvDK_kog



Opened: 2012

Sustainability: Use of local and seasonal ingredients, organic and bio-dynamic wines and beers, MSC-certified seafood, vegetarian and vegan options, we use local wild game, no industrially produced meat

Languages: English, Swedish

Season: 17.07.2019-31.04.2020

Opening hours:

17.07.-03.09.: Wed.-Sun. 12-21 h (23 h)

04.09.-24.09.: daily 12-21 h (23 h)

25.09.-05.11.: Wed.-Sun. 12-21 h (23 h)

06.11.-30.04.: daily 12-22 h (24 h)

Capacity: 120 seats

Services: Lunch, dinner, a la carte, set menus, children's menu with colored pencils

Specialties: Fresh king crab from the tank, Arctic seafood, local game

Note: Dogs are allowed in a certain area, please inform us in advance if you bring your dog to the restaurant. Free parking by the front slopes, 200 m from the restaurant.

Contact

King Crab House Finland

Ina Hammarberg

Mariankuja 6

99130 Sirkka

Tel. +358 (0) 400 138 333

ina@kingcrabhouse.fi

restaurant@kingcrabhouse.fi

www.kingcrabhouse.fi

facebook.com/kingcrabhouse

instagram.com/kingcrabhouse



KING CRAB HOUSE

SPECIALTY RED KING CRAB

Here at the King Crab House we are professionals in the red king crab. Our crabs come straight from the North Norwegian coast and we do more than only cook its legs. Here you can also try its delicious roe and exciting tail. And don't miss out on our live king crabs in the tank when you come to Levi. It can't get more fresh than this.

CULINARY OFFER

The king crab is not all. We also have fresh fish and other seafood. Local meat dishes, such as reindeer and willow grouse, and delicious vegetarian options with a Lapland twist. Our chefs are proudly cooking everything from scratch with great raw materials.

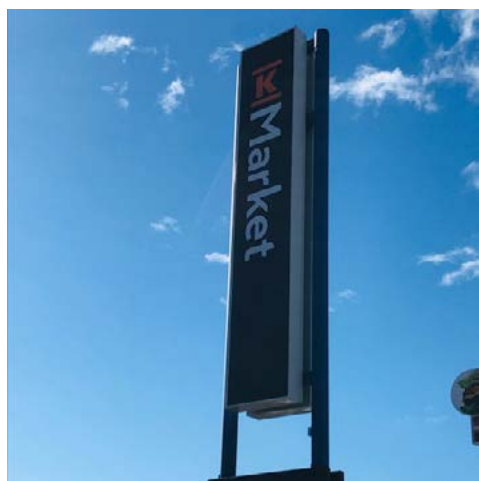
MENU FOR GROUPS

Our restaurant is cozy but still spacious and perfect for both bigger and smaller groups. Our chefs have created different group menus so everyone can find the best suited menu for their own group. Gather all your friends and enjoy the Arctic flavors of the King Crab House.



LAGE

The King Crab House is situated in the heart of Levi by the pedestrian zone in the middle of the town. Come as you are, sit down and be amazed by the Arctic flavors while you enjoy a glass of good wine. We do everything we can to give you a relaxed, but professional service in our updated and cozy restaurant.



K-MARKET LEVIN PORO

K-Market LevinPoro is a modern grocery store in Levi, nearby South pistes and Adventure Park. Would you like to taste the reindeer dry meat? According to our store name, we sell reindeer products every day of the year. Welcome to the K-Market LevinPoro, first grocery store in Levi when you arrive!

ONLINE STORE & DELIVERY SERVICE

The K-Market LevinPoro grocery store is situated near the Levi center and open daily all year round.

Shopping is easy 24/7 in the online store at www.k-ruoka.fi/kauppa/k-market-levinporo. Your order will be ready packed for pick-up or you can also choose home delivery for your groceries to your accommodation. On site the friendly staff is happy to help you with any questions you might have.

RICH SELECTION

The vast selection includes fresh fruits and vegetables, different kinds of meats, on-site baked bread, Fazer chocolates and sweets, a wide variety of drinks including e.g. a highly-rated beer selection, different kinds of reindeer meats and tasty ice cream. The selection also includes postcards, stamps and souvenirs. For the avid fishermen there are fishing permits for sale. Welcome to the K-Market LevinPoro!

Founded

2015

Languages

English

Offered services

We offer fresh fruits and vegetables, meats, on-site baked bread, Fazer chocolates and sweets, drinks, highly-rated beer selection, reindeer meat, ice cream, postcards & stamps, packet services, souvenirs & fishing permits.

Contact

K-Market LevinPoro

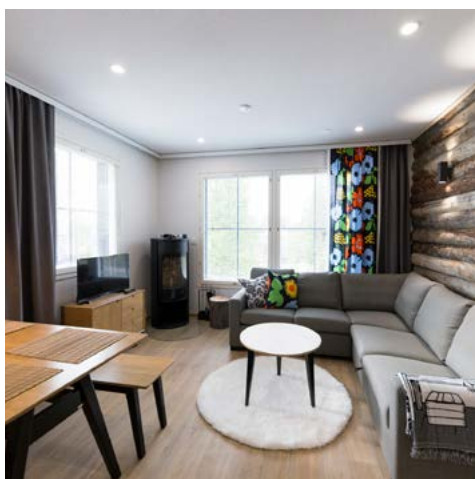
Tel. +358 (0) 10 205 3595

levinporo@k-market.com

www.k-ruoka.fi/kauppa/k-market-levinporo

facebook.com/levinporo

instagram.com/kmlevinporo



Founded: 1989

Employees: 20

Languages: English, German

Season: year-round

Note: Pets are only allowed in some apartments and in some for an additional cost. Parking places are available for free by each accommodation. The distance to the next supermarket differs depending on the location of the apartment (mentioned in each apartment description). There are three supermarkets in Levi, two of them in the center of Levi and one close by the Gondola cabin 2000 lift (around 2.5 km from the center).

Special facilities for children: Most of the apartments have a child gate by the indoors stairs. Baby cots and high chairs are bookable in advance (in some apartments they are included).

Contact

Visit Levi

Enna Paavola

Myllyjoentie 2, 99130 Levi

Tel. +358 (0) 50 511 0107

enna.paavola@levi.fi

www.levi.fi

facebook.com/levilapland

twitter.com/visitlevi

instagram.com/levilapland

youtube.com/user/VisitLevi

VISIT LEVI - CABINS & APARTMENTS

ACCOMMODATION IN LEVI

For lodging in Levi, you can choose what suits your clients best. Visit Levi offers a wide variety of hotels, cabins and apartments from 1 to 5 stars. Whether you are looking for an Alpine style apartment in the middle of the village, a log cabin surrounded by nature or a special Northern Lights accommodation you will surely find a suitable option. The apartments and cabins are well-equipped for a perfect holiday and in most of them you can enjoy the warmth of your own sauna.

Number & type of accommodations:

850 holiday apartments and 8 hotels.

Facilities:

Basic facilities: electric heating, hot/cold water, toilet, toilet paper, electric sauna and washing facilities as well as cooking facilities and tableware, refrigerator, coffee maker, microwave, dishwasher, bedding (pillows and blankets), iron, plug connector pole (to warm up the car in winter) and firewood (unless otherwise stated).

Any additional equipment is specifically mentioned in the accommodation description.

Note: We cannot guarantee the accommodation rented being allergy free. Pets are allowed in some apartments, in some for extra charge.

CLASSIFICATION OF ACCOMMODATION

Q1: Modest, simple, often supplied only with basic requirements. Suitable for those looking for affordable vacation.

Q2: Mid-range equipment, the decoration is modest.

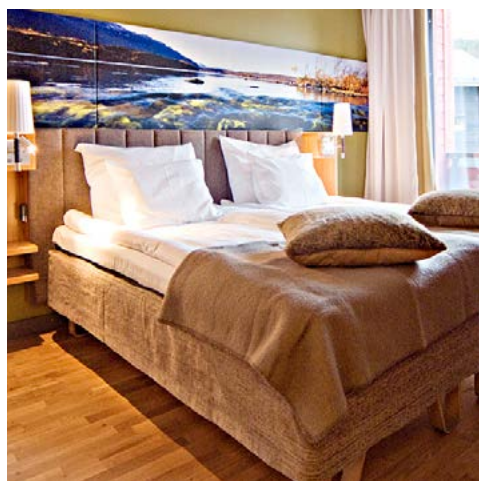
Q3: Average. The facilities and interior design are reasonable.

Q4: Above average. A good level of equipment and attention to the interior design.

Q5: High standard. Very good level of equipment. Textiles, electronics equipment and furniture of high quality.

SPA & WELLNESS

Most apartments are equipped with their own sauna and some apartments also have their indoor or outdoor jacuzzi or hot tub. Spa and other wellness products are bookable.



BREAK SOKOS HOTEL LEVI

Welcome to Levi! Levi is located in Lapland, 170 km north of the Arctic Circle.

More than just a hotel, Break Sokos Hotel Levi means a vibrant interlude from everyday life. Speed downhill or spend a mind-soothing moment with fine art. Take a dog-sledge ride or pet a friendly reindeer.

We want you to enjoy your stay with us, relax and find new inspiration. Whether you are on a work trip or a holiday, we want to offer you an unforgettable experience.

Ask for further tips and suggestions - our Levi staff will gladly help you find great, relaxing and rejuvenating experiences.

ACCOMMODATION

Hotel interior reflecting the spirit of Lapland. The hotel rooms in three different buildings are decorated to reflect the different seasons. Do you feel the most at home in Lapland's summer brightness, autumn russets, or subdued tints of the winter? The flora and fauna of Lapland are also present in the décor, for example, in paintings and curtains.

Number & type of rooms: Total 202 rooms; Standard rooms, Superior rooms with sauna, Superior Extra rooms, Suites.

Facilities: All rooms have a parquet floor, shower, electric kettle with coffee/tea/chocolate facilities, hair dryer, minibar, TV and an iron with ironing board.

SPA & WELLNESS

The hotel sauna is heated every night, and a bath in the jacuzzi relaxes your body and soul.

RESTAURANTS

More experiences to your body and sense of taste serve our restaurant Kiisa and Coffee House & Bar.

Founded: Hotel has been built 2008.

Sustainability: Break Sokos Hotel Levi is Green Key certified and is part of Green Days.

sokoshotels.fi/en/about-us/responsibility-at-sokos-hotels/green-key-program

Employees: 35

Languages: English, German

Season: year-round

Note: pets are allowed for extra charge per night; parking places available (for a free per hour, day or week); next supermarket in 200 m

Special services for children: Childrens' playing room

Arriving in Levi: Airport Kittilä (15 km), trail station Kolari (80 km), train station Rovaniemi (170 km)

Contact

Break Sokos Hotel Levi

Teija Neuvonen

Tähtitie 5

99130 Levi

Tel. +358 (0) 50 913 2000

teija.neuvonen@sok.fi

sales.levi@sokoshotels.fi

www.sokoshotels.fi

facebook.com/BreakSokosHotelLevi

instagram.com/breaklevi



© David L. Photography

Founded: 2016

Built: between 2016-2019

Last renovation: 2019

Note: Ownership is split between 5 owners of which 3 are actively involved in the business operations.

Sustainability: All measures are taken in operating in as sustainable ways as possible. All of the available recycling methods are in use and priority is on using local suppliers for all possible goods and services.

Employees: 4-15 depending on the season

Season: from the end of September until the mid of April

Note: Dogs allowed in some of the cabins; free parking on site; next supermarket in 15 km

Special Service for children: Dec.-March: snowshoes and ice skates are available to be used free of charge on site. Possibility to feed the reindeer on site is also available without additional costs.

Activities: Summer: Hiking, bicycles and fat bikes available for rent from Levi. River with possibility for fishing and canoeing 2.5 km away from site. The Northern Lights also begin to appear in the sky again in September. Separate sauna and outdoor jacuzzi facilities are available for an hourly rental cost.

Winter: Snow shoes and ice skates are available free of charge to be used on site.

Arriving in Levi: Kittilä Airport (30 km), Kolari train station (100 km), Rovaniemi train station (190 km). Transfer at extra costs.

Contact

Northern Lights Ranch
Sales Office

Ounasjoentie 1619, 99140 Köngäs

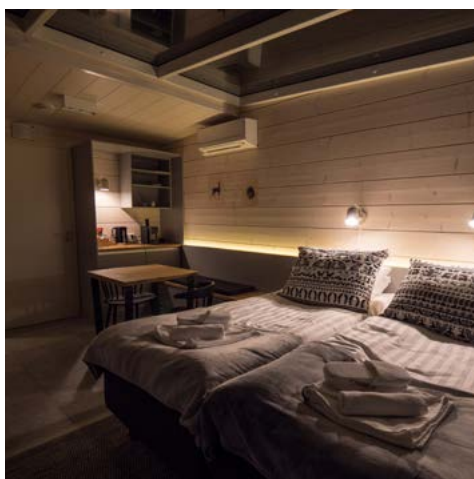
Tel. +358 44 77 00 350

info@theranch.fi

www.theranch.fi

facebook.com/Northern-Lights-Ranch-Levi-Lapland

instagram.com/northernlightsranch



© Enna Paavola

NORTHERN LIGHTS RANCH

Northern Lights Ranch is a unique restaurant and accommodation facility located in Finnish Lapland, 15 km from Levi ski centre and 30 km from Kittilä airport. It combines tranquility, pure air and beautiful nature into an Arctic experience which is rare to come by. Because of its remote location away from artificial light, it offers the best chance to experience the amazing Northern Lights, which are often visible between August and April.

ACCOMMODATION

The Northern Lights Ranch various different types of individual accommodation units which all have in common a great view towards the Northern sky through large windows and glass ceilings. The accommodation units also have detailed interiors with a touch of Arctic luxury.

Number & Type of accommodation:

3 x Sky View Cabin Standard (log apartments for 2 pax), 6 x Sky View Cabin Superior (log apartments each for 2-4 pax), 2 x Sky View Cabin Superior with sauna (log apartments each for 2 pax), 5 x Sky View Cabin Deluxe with outdoor jacuzzi (log apartments each for 2-4 pax)

Facilities: All cabins are equipped with ensuite bathrooms and motorized beds. The Sky View Cabin Superior and Sky View Cabin Deluxe models have a separate sitting area with TVs and sofa beds.

RESTAURANT

The heart and soul of Northern Lights Ranch is its beautiful restaurant facilities where high standard breakfasts and dinners are served. The restaurant's unique feature is that it forms one part of a reindeer corral where the Northern Lights Ranch's reindeer live during the winter.

Capacity: The restaurant at Northern Lights Ranch features a bar area for approx. 20 persons and dining area for approx. 80 persons.

SPA & WELLNESS

Possibility to rent sauna for private use along with an outdoor hot tub. Sauna & jacuzzi which can be rented to private use are in a separate building, not connected to main building.

NORTHERN LIGHTS TRAVEL PACKAGE

Northern Lights with Arctic Flavours is the ultimate travel package for all seeking unique and once in a lifetime experiences while traveling. Available for bookings as follows:

- A 3-night stay in a Sky View Cabin Superior with double occupancy at Northern Lights Ranch.
- Daily breakfasts and set 3-course dinners at the restaurant of Northern Lights Ranch.
- Participation on the guided Aurora Chase™ provided by Arctic Frontier on the 2nd evening of the stay including all needed camera equipment



LEVIN IGLUT - GOLDEN CROWN

GLASS IGLUO VILLAGE

The glass igloo village consists of 3 Suite igloos, 9 Prime Superior igloos, 15 Superior igloos and 1 Northern Lights House. In the glass-ceilinged Levi Igloos or the subterranean Northern Lights House, you are surrounded by stunning fell scenery, and you can be part of the great glory of nature all year round.

SUITE IGLUOS

3 high standard Suite igloos located in the front row with the best unobstructed view (53 m²).

Number of Suite Igloos: 3

Facilities: air-condition, private bathroom (shower and toilet), small dish set for 4 persons, microwave, speciality coffee maker, kettle, small dishwasher, minibar, hair dryer, free WiFi, audio system with Bluetooth-connection, TV-screen, sleeping area with one double bed (210 cm), lounge area with dining table and sofa bed (extra bed for 1-2 pax on request), illuminated Northern Lights in the ceiling of the lounge, terrace with own outdoor jacuzzi, bathrobes, slippers and hats, welcome drink, welcome basket and portage service.

PRIME SUPERIOR IGLUOS

9 Prime Superior igloos located in the front row close to the nature. Some of these igloos are located behind the Suite igloos, but still offering a nice location and an unobstructed view to the sky (23 m²).

Number of Prime Superior Igloos: 9

Facilities: air-condition, private bathroom (shower, toilet), breakfast dish set for 2 persons, audio system with Bluetooth-connection, microwave, speciality coffee maker, kettle, frid-

ge, hair dryer, free WiFi, double bed (motorized beds that can be separated from each other, extra bed on request (possible in 5 igloos), bathrobes, slippers and a welcome drink.

SUPERIOR IGLUOS

15 Superior igloos are located behind the Premium igloos, but still offer gorgeous vistas (23 m²).

Number of Superior Igloos: 15

Facilities: air-condition, private bathroom (shower and toilet), double bed (motorized beds that can be separated from each other, sofa-bed (suitable for 2 small children or 1 adult) breakfast dish set for 4 persons, Bluetooth-connection, microwave, kettle, fridge, hair dryer, free WiFi, bathrobes and slippers

NORTHERN LIGHTS HOUSE

Villa for 2-4 guests (123 m²).

Facilities: living room with landscape windows and fireplace, dining area with dining table for 8 persons, fully equipped kitchen, free WiFi, two bedroom suites with own bathroom, extra beds for 1-2 kids possible, one separate toilet, a cosy fireplace, sauna with fridge, 2 showers and a panoramic terrace with a hot tub for six and a welcome drink.

RESTAURANT AURORA SKY

Season: 01.09. - 30.04.

Services included: breakfast, 4-course-dinner/ half-board (to be ordered 1 day in advance), à-la-carte meals. Lunch for groups possible to book in advance.

Note: Small tee-pee in the yard, where a pre-booked private dinner can be enjoyed.

Founded: 2008

Built: 4x Prime Superior igloo and Northern Lights House 2008, 8x Superior igloo 2012, 7x Superior igloo and 5x Prime Superior 2016, 3x Suite igloo 2019

Note: family business

Levin Iglut – Golden Crown originated from Tauno Mäkelä's dream. He happened to end up on the slope of Utsuvaara, where the view was unforgettable and wanted to share it with others as well. The four first igloos that were built in 2008 also marked the beginning of a family business aiming to provide its guests the best igloo experience in Lapland. Personalised heartfelt service continues to be the basis of everything we do.

Sustainability: Ground heat, joint ventures and partnerships with local entrepreneurs, automatic thermoregulation, water consumption is minimized, use of returnable and recycled goods, priority use of local and fair trade suppliers

Employees: 10

Languages: English, German

Season: 01.09. - 30.04.

Note: dogs not allowed; free parking available; next supermarket in Levi centre (10 km)

Activities: Hiking. All summer/ autumn activities available in Levi village (15 min. drive from Levin Iglut). Please see:

www.levi.fi

Arriving in Levi: Kittilä Airport (17 km). Transfer services offered for guests on request, also from other destinations within Lapland.

Contact

Levin Iglut - Golden Crown

Sales Office:

Jessica Jansson / Eva Lindström
Harjatie 4, 99130 Levi (visitor address)

Tel. +358 (0) 50 313 5637 (Jessica)

Tel. +358 (0) 46 921 7418 (Eva)

sales@leviniglut.fi

www.leviniglut.fi

facebook.com/leviniglut

instagram.com/leviniglut



Founded: 1988

Last renovation: 2018

Note: family-run company

Sustainability: We use local products. Waste is separated and recycled. Hullu Poro has ISO 9001 certification.

Employees: 80

Languages: English, German

Season: year-round (exception: short breaks in May/ Oct. t Taivaanvalkeat)

Note: Dogs allowed at Hotel Hullu Poro but not at Taivaanvalkeat; free parking places available; supermarket 200 m from Hotel Hullu Poro and 8 km from Hotel Taivaanvalkeat

Arriving in Levi: Private airport transfers available, to be booked in advance: sales@hulluporo.fi

Contact

Hullu Poro Oy
Hullu Poro Sales
Rakkavaarantie 5, 99130 Levi
Tel. +358 400 16 6510500
sales@hulluporo.fi
www.hulluporo.fi
www.elvesvillage.fi
www.crazyreindeer.com
facebook.com/hulluporoooy
facebook.com/elvesvillage
twitter.com/crazyreindeer
instagram.com/hulluporolevi
instagram.com/elvesvillage
youtube.com/user/huporo

HULLU PORO

HOTEL HULLU PORO

This family owned hotel has been all time favourite for travelers from all over the world for three decades. Located in the heart of Levi resort Hotel Hullu Poro offers comfortable rooms with free WiFi access. Hotel guests may relax in the spa department enjoying a refreshing coolness of the cold water plunge pool or warm bubbles of the jacuzzi free of charge and the gym is open daily.

ACOMMODATION

Number & type of rooms: 157 rooms

130 twin/ double rooms equipped with shower, sauna or bathtub, 16 family rooms with own sauna for up to 4 persons each, 11 two-storey apartments with own sauna for up to 6 persons each

Facilities: TV, free WiFi, coffee/ tea making facilities, refrigerator, shower, toilet, hairdryer in all rooms. Some of the twin/ double rooms and all family rooms with balcony. Some of the rooms with clothes drying cupboard.

RESTAURANTS

The restaurants of Hullu Poro offer new flavours for each day of the week, a good selection of local and international kitchen. Our Dine Around packages are carefully prepared dining packages for those who want to eat dinner in high-quality restaurants. Dine Around pack-

ages have been formed in a way to experience the most comprehensive culinary journey of Hullu Poro kitchens.

Number & type of restaurants: 15 restaurants in total.

Lunch/ dinner: Wanha Hullu Poro, Ämmilä (Finnish and Lappish), Pihvipirtti (Steakhouse), Taivas (Buffet dinner), Kammi (Lappish, Feast of Reindeer), Sapuska (Fondue and grill), Asia (Asian tastes), Ristorante Renna, Messi (Pub & hamburgers)

Bars and nights club: Reindeer Lounge & Bar, Pub Hölmölä, Hullu Poro Areena

SPA & WELLNESS

Hullu Poro Relax Center provides a wide range of wellness services and sauna experiences. Stay at Hotel Hullu Poro and be ready to get pampered with a variation of wellness treatments.

Sauna department in the main building of the hotel (two saunas, jacuzzi and cold water plunge pool) and infrared saunas. Sauna department in the separate hotel building (two saunas and jacuzzi). Mielenvalkea sauna center 2 km from the hotel (two saunas).



ELVES VILLAGE

Experience a place where human beings and nature are one and time is not an issue. This is a place where you can feel the magic of Lapland. Elves Village and Lodge Hotel Taivaanvalkeat are a unique complex on the riverbank of the river Ounasjoki. Only 8 km from the center of Levi you will find a place that is one of a kind. There are no street lights, no demands, only peace and quiet.

TONTTULA ELVES VILLAGE

Elves Village is an attractive destination based on stories, fantasy, culture and mythology of Lapland. It does not compete with traditional amusement parks. Main themes in the park are nature, culture, tradition and stories. Elves Village invites travellers for a visit from all over the world, both adults and children.

The Elf in the yellow dress is one of the main characters in Elves Village. You can participate on a guided tour with the Elf and this tour leads you in the middle of beautiful Lappish forest to the Elves Hideaway where you can easily breathe the purest air in the world and experience the magical diversity of the Lappish nature. During winter season in November and from January until April the tour is available twice a week, as well as in summer-autumn from June until the end of September.

Season: open all-year-round, closed during short breaks in May/ October

Opening hours: 10-16 h

SUMMER/ AUTUMN TOUR WITH THE ELF IN A YELLOW DRESS

Tour through the magical forest guided by the Elf in a yellow dress. See the wonders of nature and find your way to the most secret place of the elves, the Hidden Huts, and visit Gingerbread House, Elves' School and Wise Elf's House.

Note: More activities and group programmes on request.

LODGE HOTEL TAIVAANVALKEAT

Lodge Hotel Taivaanvalkeat and its quiet country surroundings offer rustic style accommodation, a bit of luxury and heavenly food. Accommodation, meetings and events can be arranged in the main complex. This unique hotel combined with activities of the Elves Hideaway is an excellent place for groups, incentives and families.

ACCOMMODATION

Lodge Hotel Taivaanvalkeat

Number & type of rooms: 13 rooms.

Downstairs 9 twin/ double rooms, upstairs 4 twin/ double rooms with an extra bed each. All rooms with own shower and toilet, hairdryer.

Facilities: Breakfast room, TV and fire place in the living room downstairs, TV and kitchenette in the lounge upstairs, two saunas and hot whirlpool outdoors. Upper floor can be separated to its own complex (own entrance).

Country House

Number & type of rooms: 4 rooms.

Downstairs 1 double bedroom, separate shower and toilet, upstairs 3 twin/ double rooms, shared shower and toilet.

Facilities: TV in the living room, kitchen, sauna

The Elf Hut

Number & type of rooms: 3 twin rooms, shared shower/ toilet

Facilities: Kitchen, coffee & tea maker, washing machine, living room, TV, fireplace

NEW: Glass Pyramids

Starting from November 2019 the Elves Village will have glass pyramids which offer magical accommodation under a starlit sky in the middle of Lappish nature. A unique opportunity to see Northern Lights dancing in the sky through the glass ceiling.

Facilities: Twin beds, shower/ toilet, coffee & tea maker, refrigerator

RESTAURANTS

Restaurant Tonttula: Cafeteria open daily. Lunch and dinner on request basis, also themed dinners.

Revontulikota (Northern Lights hut): Lunch and dinner on request basis.

SPA & WELLNESS

Riverbank sauna: Traditional wood-heated sauna by Ounasjoki river, hot whirlpool outdoors. In winter possibility for ice-swimming. Wellness treatments available.



Founded: 2009

Renovations: 2019 balconies of 6 suites are renovated and rooms are transformed into Sky Suites with glass-roofed living areas.

Sustainability: Hotel Levi Panorama is committed to an efficient use of energy to combat climate change, and participates the voluntary energy efficiency agreements which are a key instrument for Finland to achieve the targets set by the Energy Efficiency Directive (EED).

Employees: 20

Languages: English, German

Season: year-round

Note: dogs are allowed; parking spaces available; next supermarket- with gondola lift 400 meters, by car 4 km

Special services for children: Play area in the restaurant. Against extra cost: summer sledge track next to the hotel, kids slope next to the hotel (winter).

Activities: Summer: A travel guide for individual travellers provided by the Hotel Levi Panorama can be found from the hotel website: golevi.fi/en/experiences-and-activities/travel-guide-activities

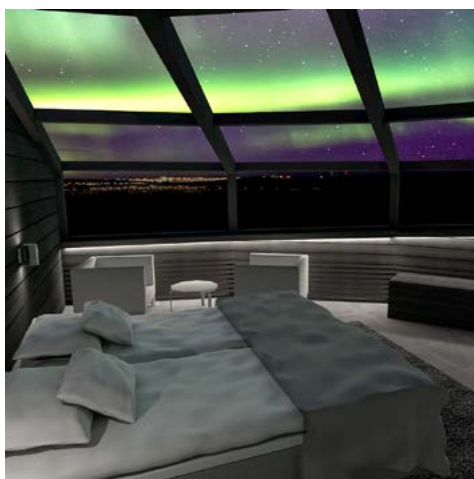
Winter: The hotel's unique location in the Levi ski slope offers an alpine-like opportunity to go downhill skiing straight from the door step.

Packages: Hotel offers golf packages in summer and autumn.

Arriving in Levi: Kittilä Airport (14 km), Kolari train station (80 km). Transfer at extra cost.

Contact

Hotel Levi Panorama/
Exhibition Samiland
Hanne Tohmo
Tunturitie 205, 99130 Sirkka
Tel. +358 (0) 40 456 2059
sales@golevi.fi
www.golevi.fi, www.samiland.fi
facebook.com/HotelLeviPanorama
instagram.com/hotellevipanorama
instagram.com/samilandlevi
youtube.com/channel/UCijBtERFgrB-pw51Xf1VSBpg/videos
pinterest.de/golevifi



HOTEL LEVI PANORAMA

With the most idyllic location slope side at Levi fell, Hotel Levi Panorama has a variety of accommodation in spacious hotel rooms and suites. The Hotel overlooking the Levi village is easily accessible via the Levi Express Gondola, by stairs or road. The magnificent views from Hotel Levi Panorama stretch out to the nearby fells of Pallas, Kätkä, Aakenus and Ylläs.

The Hotel welcomes you with bright and spacious hotel rooms and a complete set of services and facilities from restaurants and bar, fitness room and scenic saunas to the Event Centre Levi Summit with its movie theatre, conference facilities, café & restaurant and Samiland exhibition.

ACCOMMODATION

Number & type of accommodation: Total number of hotel rooms 170 and 14 apartments: 73 standard rooms, 73 superior rooms, 7 Jr. suites with sauna or bathtub, 11 Standard and Deluxe Suites with 1-2 bedrooms, 6 Sky Suites with glass-roofed living areas and 14 apartments with 1-2 bedrooms. Room size 28.5 m² - 67.5 m².

Facilities: Beds for two, shower, toilet, hair dryer, flat-panel TV, several international TV and movie channels, free Internet connection. Electric kettle & complimentary coffee & tea in room, Chromecast, minibar, safe-deposit box, divan sofa bed for 1 adult or 2 children in hotel rooms. Sauna, washing machine and well-equipped kitchen in apartments.

Sky Suites offer extra space on glass-roofed living areas perfect for star-gazing and admiring beautiful landscapes.

RESTAURANT

Hotel's panoramic restaurant is located in two floors and offers cozy seating areas and a bar. Restaurant offers breakfast, dinner and À la Carte. Both floors have seating with breathtaking views to the Northern fells and plains.

SPA & WELLNESS

Scenic saunas in the 7th floor, open daily for all hotel guests.

SAMILAND EXHIBITION

Samiland Exhibition is a part of the world-wide UNESCO Observatory Cultural Village programme. Exhibition is located in the Event Centre Levi Summit which is annexed to the Hotel Levi Panorama. Exhibition consists of an indoor exhibition (500 m²) and an outdoor exhibition (10,000 m²), which explore the history and present day, culture and mythology of the European Union's only indigenous people, the Sami.

Season: Exhibition is open around the year.

Services included: The entrance ticket includes a cup of coffee, tea or hot juice that can be enjoyed in the café after a tour of the exhibition.

Optional: Guided tours available, also with joik performance.



LAPLAND HOTELS SIRKANTÄHTI

Lapland Hotel Sirkantähti is located in the center of everything in Levi fell village, right next to many interesting events and activities. Our versatile accommodation options provide 70 hotel rooms and 78 different sized apartments. The best bit is that you can enjoy your own private sauna in all of our rooms and apartments. The reception, cafe and restaurant are all decorated with soft tones, making them a single open, airy space.

ACCOMMODATION

Number & type of accommodation: In total 70 hotel rooms: 16 family rooms and 54 twins 45 Studio apartments between sizes 20.5m² - 27m², 33 apartments between 41m² - 52m² with 1-2 bedrooms.

Facilities: Sauna, shower, hairdryer, TV, clothes drying cupboard, water kettle, selection of hot drinks.

WINTER ACTIVITIES

In the winter our weekly programme is jam packed with snowmobile, reindeer and husky adventures, snowshoe tours, ice fishing and Northern Light hunting trips. A definite highlight is a memorable trip to Lapland Hotel SnowVillage, which has been covered widely in the press for its spectacular Game of Thrones themed sculptures during the last 2 winter seasons.

SUMMER ACTIVITIES

Our summer weekly programme includes biking, hiking as well as our highlight of the summer season a traditional day or evening at a Finnish Summer Cabin where you will be able to relax during a boat ride on crystal clear waters, pick berries from the silent forest, try your hand at fishing, and bathe in a traditional Finnish sauna under the midnight sun.

OTHER ACTIVITIES & SERVICES

For those who prefer to explore the nature by themselves and at their own pace, Lapland Safari's Rental Service offers a wide selection of outdoor equipment for rent around the year.

Having a comprehensive and professional collection of equipment available in resort avoids the hassle of extra luggage and packing. Choose from seasonal clothing, rucksacks, hiking equipment, regular and e-fatbikes, canoes, sup boards, snowshoes, back country and cross country skis and much more.

Founded: 1988

Sustainability: Lapland Hotels and Safaris has an own sustainability programme and reports this yearly. For example we use local suppliers both for hotel and safari businesses and we have invested on new 4-stroke snowmobiles to reduce the emissions. We are also following and taking action to minimize the consumption of power and water.

Season: year-round

Languages: English, German

Restaurant: The Bistro-style restaurant at Lapland Hotels Sirkantähti is a wonderful area to socialize and find some delicious food. It puts focus on the time after outdoor activities and allows a moment of calm socializing, for large and small groups alike.

Spa & Wellness: Private sauna in each hotel room and apartment.

Note: Dogs/ pets are allowed; free parking places in front of the hotel and each accommodation building; next supermarket in 300 m

Arriving in Levi: Kittilä Airport (17km), Rovaniemi Airport (176 km), Kolari train station (83 km), Rovaniemi train station (170 km). There is a transfer from each Finnair flight from Kittilä Airport and from all the trains from Kolari train station.

Contact

Lapland Hotels & Safaris Oy
Lapland Hotel Sirkantähti

Maria Astrén

Levintie 1630

99130 Sirkka

Tel. +358 40 484 1680

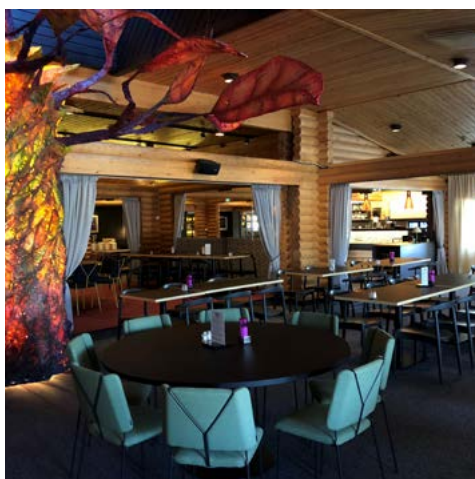
maria.astren@laplandsafaris.fi

sirkantahti@laplandhotels.com

www.laplandhotels.com

facebook.com/laplandhotelsofficial

instagram.com/lapland_hotels



Opened: 1981

Last renovation: 2018

Employees: 80

Languages: English, German

Season: year-round

Note: Nearest supermarket 300 m, downhill skiing 300 m.; free parking places

Activities: Summer: Levi weekly programme, hiking, biking, water rafting, boat trips, canoeing, fishing, midnight sun programme, horse riding, golf etc.

Winter: Levi weekly programme, husky safaris, snowmobiling, reindeer rides and safaris, alpine skiing, cross country skiing, snow boarding, snow shoe excursions, ice fishing, Northern Lights safaris and excursions, Santa programmes etc.

Arriving in Levi: Kittilä Airport (14 km), Rovaniemi Airport (170 km), Kolari train station (80 km), Rovaniemi train station (170 km)

Contact

Levi Hotel Spa

Leena Härkönen

Levintie 1590, 99130 Levi

Tel. +358 400 218018

leena.harkonen@levihotelspa.fi

hotel@levihotelspa.fi

www.levihotelspa.fi

facebook.com/levihotelspa

instagram.com/levihotelspa

youtube.com/channel/UC99jJln3wDTcP-seSZtH4reA

LEVI HOTEL SPA

In Levi Hotel Spa you get to relax right at the foot of the ski slopes in a room that is perfect for you and your travel companions. We are offering easy-going holidays in Standard Rooms, cosy accommodation with children in four-bedded family rooms and stylish atmosphere in the Superior Rooms and Junior Suites. Our spa, conference rooms and restaurants are close to the rooms, even the Levi village centre is just around the corner.

ACCOMMODATION

Number & type of rooms: A total of 203 rooms:

24 Standard rooms (19 m²) for one or two persons with either twin beds or a double bed.

125 Standard family rooms (21-25 m²) are meticulously designed for the needs of families with children. It is fun to prepare snacks in the kitchenette and the children will enjoy sleeping in their own alcove.

6 spacious family Suites (45-68 m²) with private sauna.

18 Superior rooms (29 m²) with balconies are in the Ounas building, with an indoor corridor connection to the spa. These spacious rooms can accommodate one or two persons and can be equipped with an extra bed for one child or a cot.

30 spacious Junior Suites (44 m²) with own private sauna, a kitchen-living room combo and a bedroom with a double bed. The living room can easily accommodate extra beds for two children.

Facilities: All rooms with shower, flat-screen TV, coffee/ tea making facilities, fridge, ironing facilities, drying cupboard and free WiFi. In Superior rooms and Junior Suites also cup-solo coffee machine.

RESTAURANTS

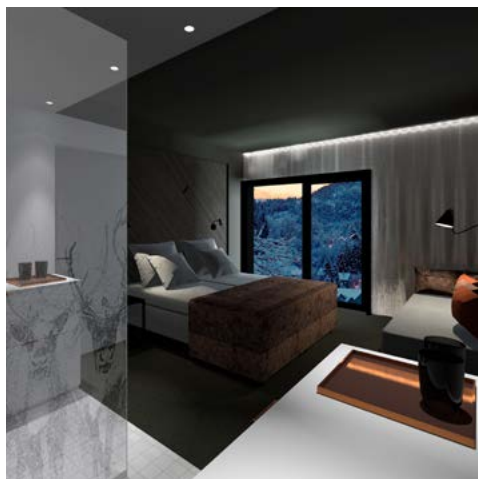
Our restaurants offer good variety of options. Enjoy the best flavours of Lapland in casual fine dining restaurant Kekäle Bar & Grill, northern and Scandinavian tastes in Ahku Buffet Restaurant, delicious pizzas in Classic Pizza Restaurant or the kind of burger you want at Burger King. Whether travelling in the company of grown-ups only or with children, we offer you magical Lapland experiences to cherish.

SPA WATER WORLD

An atmospheric indoor water park with total 17 different kind of pools. You can sit in the outdoor jacuzzis in snowfall or in the sunshine listening to birds chirping happily. The spa offers something for everyone. Water slides, swimming pools, water creatures for children and jacuzzis. Coming here is not just another visit to the spa, it is an experience.

AILU FAMILY FUN & BOWLING

Ailu Family Fun was totally renewed in the summer of 2017. The children's world has everything you need for having fun: you can build an igloo, climb on a snowflake, frolic around in a foam rubber pit and throw snowballs with permission! The entrance fee also includes the use of a bowling alley.



DESIGN HOTEL LEVI

ATMOSPHERE, FINNISH DESIGN AND CASUAL LUXURY

New boutique hotel Design Hotel Levi with 77 rooms will be opened in November 2019. Admire the Arctic nature and night sky illuminated by the Northern Lights from your own room.

The hotel is part of Levi Hotel Spa Resort and is located at the heart of Levi. Shopping possibilities, restaurants and activity programme services are only a couple of minutes away. Levi Hotel Spa's services are available right next door, on the very same property.

In Design Hotel Levi, we have combined elements from both modern design and the traditional Lappish design and you will find greying pinewood from Lapland, natural stones, wood, black, copper and reindeer themes in the hotel.

ACCOMMODATION

The hotel rooms are situated in four floors, and all the rooms have a French balcony or a regular balcony in them. The top floor of the hotel can be reserved in its entirety for private use for groups. A stunning mountain view opens from the top floor.

Number & type of rooms: 56 Deluxe double rooms, 14 Deluxe loft rooms, 7 Deluxe suites.

Facilities: Deluxe double rooms cover 24 m² and have either twin beds or a double bed. Rooms with connecting door available.

Deluxe loft rooms (24 m²) have twin beds in the room. Mezzanine level for one adult or two children. In the spacious Deluxe Suite (50 m²) you have your own private sauna.

KEKÄLE DESIGN BREAKFAST AT RESTAURANT KEKÄLE

Kekäle Design Breakfast is a delicious and healthy part of the Design Hotel Levi experience. Besides the usual assortment of breakfast classics, the menu offers Lappish and Finnish specialties, seasonal ingredients and organic products. Design Breakfast in restaurant Kekäle is available from November until April.

SPA WATER WORLD

An atmospheric indoor water park with total 17 different kind of pools. You can sit in the outdoor jacuzzis in snowfall or in the sunshine listening to birds chirping happily. The spa offers something for everyone. Water slides, swimming pools, water creatures for children and jacuzzis. Coming here is not just another visit to the spa, it is an experience.

AILU FAMILY FUN & BOWLING

Ailu Family Fun was totally renewed in the summer of 2017. The children's world has everything you need for having fun: you can build an igloo, climb on a snowflake, frolic around in a foam rubber pit and throw snowballs with permission! The entrance fee also includes the use of a bowling alley.

Opening: end of 2019

Languages: English, German

Season: year-round

Restaurants: 5 restaurants and bars: Ahku Buffet Restaurant, Kekäle Bar & Grill, Classic Pizza Restaurant, Burger King Restaurant and Joiku Music Bar.

Note: Nearest supermarket 300 m, downhill skiing 300 m.; free parking places

Activities: Levi weekly programme, hiking, biking, water rafting, boat trips, canoeing, fishing, midnight sun programme, horse riding, golf, husky safaris, snowmobiling, reindeer rides and safaris, alpine skiing, cross country skiing, snow boarding, snow shoe excursions, ice fishing, Northern Lights safaris and excursions, Santa programmes etc.

Arriving in Levi: Kittilä Airport (14 km), Rovaniemi Airport (170 km)

Contact

Design Hotel Levi
Levi Hotel Spa
Leena Härkönen
Levintie 1590, 99130 Levi
Tel. +358 (0) 40 520 0293
leena.harkonen@levihotelspa.fi
sales@designhotellevi.fi
www.designhotellevi.fi
facebook.com/Designhotellevi
instagram.com/designhotellevi
youtube.com/channel/UC99jJln3wDTcP-seSZtH4reA



Founded: 1995

Cabins built: 1995-2003

Last renovations: 2008-2018 some renovations and upliftings

Note: owner-run company

Season: year-round

Languages: English

Spa & Wellness: Sauna in every apartments

Note: Pets are allowed in two apartments, next supermarkets in 500 m-1.5 km, free parking spaces available

Arriving in Levi: Kiittilä Airport (14 km), Rovaniemi Airport (170 km), Kolari train station (85 km), Rovaniemi train station (170 km). Transfer offered at extra cost.

Contact

Levikaira Apartments

Tel. +358 (0) 50 462 6300

info@levikaira.fi

www.levikaira.fi

facebook.com/levikaira

instagram.com/levikaira

LEVIKAIIRA LOG CABIN APARTMENTS

TRADITIONAL LAPPISH LOG CABINS

In our semi-detached log cabins called Levikaira guests can enjoy the atmosphere of more traditional Lappish holiday home.

In these apartments guests can enjoy nice and more private cabin life near the services as the cabins are located a few steps away from the center. There is a fireplace in every apartment and most of the cabins are made of silver grey log.

All apartments are fully equipped and have a private sauna as well as free WiFi. During the winter time all our apartments include two free ski passes for guests' unlimited use.

ACCOMMODATION

Number of apartments: Levikaira includes altogether 18 apartments for 6-10 persons with 166 bed places.

Facilities: Fireplace made of slate, firewood, tableware, cooking utensils, electric stove+oven, dishwasher, fridge, freezer, microwave oven, electric kettle, coffeemaker, toaster, radio-CD-player, cable-TV, DVD, washing machine, electric drying cabinet for clothes, iron, hairdryer, 2 x car heating point

Free baby cots and high chairs in all apartments available. There is also a child gate upstairs.



APARTMENTS LEVIN KULTARINNE

ALPINE STYLE APARTMENTS

Our 10 apartments in Levin Kultarinne alpine style houses are located right in the heart of Levi only 100m from the main slope and surrounded with all the services.

Apartments have a shared warm ski maintenance room and each apartment has its own spacious and lockable storage.

All apartments are fully equipped and have a private sauna as well as free WiFi. During the winter time all our apartments include two free ski passes for guests' unlimited use.

ACCOMMODATION

Number & types of apartments: In total 10 apartments with 78 bed places. The modern apartments for 5-10 persons accommodate comfortably one family or a bigger group

Facilities: Tableware, cooking utensils, electric stove+oven, dishwasher, fridge, freezer, microwave oven, electric kettle, coffee-maker, toaster, radio-CD-player, cable-TV, DVD, wash-ing machine, electric drying cabinet for clothes, iron, hairdryer, car heating point. Free baby cots and high chairs in all apartments available. There is also a child gate upstairs.

Founded: 1995

Apartments built: 2000

Last renovations: 2008

Note: owner-run company

Season: year-round

Languages: English

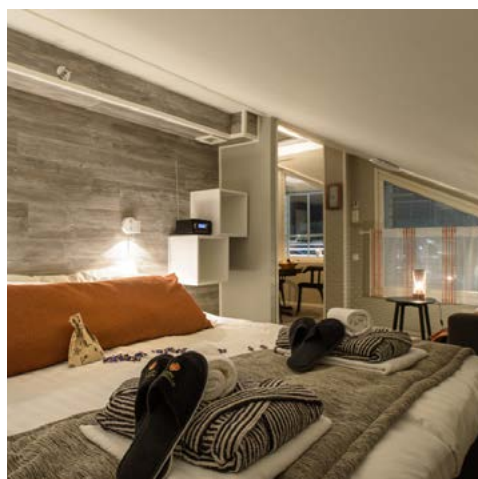
Spa & Wellness: Sauna in every apartment

Note: Pets not allowed, next supermarket in 500 m, free parking available

Arriving in Levi: Kittilä Airport (14 km), Rovaniemi Airport (170 km), Kolari train station (85 km), Rovaniemi train station (170 km). Transfer offered at extra costs.

Contact

Levikaira Apartments
Tel. +358 (0) 50 462 6300
info@levikaira.fi
www.levikaira.fi
facebook.com/levikaira
instagram.com/levikaira



Founded: 1998

Chalet-Apartments built: 1998-2007

Last renovations: 2018

Note: family-run company

Sustainability: Joint ventures and partnerships with local entrepreneurs, water consumption is minimized by automatic shower tabs and tracking.

Season: year-round

Languages: English

Note: Pets are allowed in some apartments; next supermarket in 500-600 m; one parking space per apartment free of charge

Arriving in Levi: Kittilä Airport (17 km), Rovaniemi Airport (170 km), Kolari train station (83 km), Rovaniemi train station (170 km)

Contact

Levi Alpine Chalets

Miina Portti

Hissitie 7B, 99130 Levi

Tel. +358 (0) 20 786 6433

miina@levinalppitalot.fi

info@levinalppitalot.fi

www.levinalppitalot.fi

facebook.com/levinalppitalot

instagram.com/levinalppitalot

youtube.com/user/levinalppitalot

LEVI ALPINE CHALETs

HIGH-QUALITY CHALET-APARTMENTS

In a traditional hotel room one only sleeps, but in the authentic and original Levi Alpine Chalets one comes to live. Quality chalets are well equipped and full of holiday atmosphere.

ACCOMMODATION

Our 53 chalets for different demands offer a wide selection of accommodation options from 1-2 person chalets with a sauna up to chalets accommodating 15 persons. From most of the chalets you can enjoy the beautiful view of Levi fell, and they are located conveniently in the central area of Levi village.

Number of apartments: In total 53 apartments.

Facilities: Tableware and cooking equipment, stove (note: no oven in all apartments), dishwasher (note: in most apartments), fridge-freezer, microwave, kettle, coffee maker, toaster, ironing equipment, hair dryer. Washing machine for common use found at Alpine Star building C. Facilities for children have to be ordered beforehand. Each apartment have their own private sauna.

The bed linen, towels and departure cleanings are always included in Alpine- and Alpine Star apartments.



Changes and errors excepted.

