

# KOTKA-HAMINA

FINLAND 2020







## KOTKA-HAMINA REGION - THE REAL FINLAND

### KOTKA-HAMINA REGION

Kotka-Hamina region is situated on the southeast coast of Finland, on the shores of the Baltic Sea within only 1 hour drive from Helsinki area and 3 hour drive from St. Petersburg. Kotka-Hamina is an attractive seaside region offering more than 100 kilometres of coastline with a laid-back islander lifestyle and a strong maritime culture. Its rugged shorelines and authentic fishing village locations can be visited with one's own boat or by a regular boat service. The beautiful, unique and award-winning parks in different parts of Kotka city are attractions that always charm the visitor. The region is a compact yet diverse area offering untouched wilderness in a natural environment and two National Parks: Valkmusa National Park in Pyhtää and Gulf of Finland National Park in the breathtaking archipelago.

There is no need to trek into nature; you are already right in the middle of it. The beauty of the waterways is dazzling, and there are also special sites of fascination for hikers, anglers and bird-watchers, with countless alternatives, from shooting rapids at speed to gentle walks and tranquillity amidst fantastic scenery. The River Kymijoki, which back in history marked the border between Sweden and Russia, offers a haven for calm and relaxation and is also the best salmon river in Southern Finland.

The region offers also brilliant insights into

the recent past and ages further back in the mists of time. The colourful history of the border region takes you on a dizzying adventure through the centuries from numerous nations' perspective, from the courts of Swedish-ruled Finland to the Russia of the czars.

### FOUR SEASONS FOR NORDIC ARCHIPELAGO

All four seasons in Finland are different, and there is no better place to get the unique feel of them than our archipelago. It is an area of extremes, a garden of rocks shaped by centuries of water and changing weather.

There are several unique destinations along our archipelago like Kaunissaari, Rankki, Tammio, Ulko-Tammio or Rakinkotka, each of them perfect for enjoying the contrast of weather and shelter, nature and local atmosphere & heritage, with or without something to do.

### WALKABOUTS – WONDERS IN WALKING DISTANCE

Enjoy exploring Kotka Urban parks by walking. Kotka is well-known as the capital of parks in Finland. Located on an island Kotkansaaari, the city centre features 9 different parks all within walking distance. When in Kotka, make sure to visit the most awarded park in Finland – Sapokka Water Garden, and enjoy the sea breeze in Katariina Seaside Park.

The sights along the circular streets of the old town centre and fortress of Hamina are all close

to one another. Hamina and its history can be viewed more broadly from the ramparts of the fortress surrounding the centre. Hamina Bastion used to be the central bastion of the fortress.

### BORDER REGION WITH HISTORY

Our area is located in a crossroads of east and west, north and south. During the centuries national borders have crossed our lands, changing their place regularly and left the area with history full of fascinating details behind. Some of the remains are more visible than the others, but if you look carefully, you can sense the past and present together, in a perfect harmony that stretches over the centuries.

### KYMI RIVER DELTA AND RIVERSIDES

Kymiriver flows through our area to the sea with five different streams. Each one of them is different and delivers countless opportunities for relaxation, fishing, water sports and outdoor experiences.

With its dense history, Kymiriver delta has served as a pathway for Vikings and fishermen and as a national border from 1743 to 1809. This vast history is still very visible in buildings and ruins along the riversides.

Today Kymiriver delta is famous of its varying nature and atmosphere, that changes through seasons. While some stretches have more current, others are almost still and full of life, making every twist and turn of the river a unique experience.

### Contact Kotka-Hamina

Cursor  
 Kotka-Hamina Region  
 Sanna Nikki  
 Tourism Manager  
 Tel. +358 40 190 2585  
[sanna.nikki@cursor.fi](mailto:sanna.nikki@cursor.fi)  
[www.visitkotkahamina.fi](http://www.visitkotkahamina.fi)  
[instagram.com/visitkotkahamina](https://www.instagram.com/visitkotkahamina)  
[youtube.com/user/Kaakko135](https://www.youtube.com/user/Kaakko135)  
[#visitkotkahamina](https://www.facebook.com/visitkotkahamina)

### Highlights

**A tour around Kotka city parks:** Katariina Seaside Park, Herb Garden Redoubt Kotka, Sapokka Water Garden, Karhula Riverside Park

**Hamina old center:** Hamina's city centre, based on a unique circular town plan, is one of the region's most fascinating sights.

**Unforgettable Islands:** Spend a leisurely summer day or an active winter escape on the islands of the Eastern Gulf of Finland.

**Hamina Museums:** Four different museums in Hamina tell about the history of the city, its countryside and the Reserve Officer School.

**Summer Activities:** hiking, canoeing, (mountain) biking, camping, fishing, birdwatching, golf, skydiving, rock climbing, rafting, cruises, cottage living, sauna and swimming in lakes, sea and ponds.

**Winter Activities:** cross-country skiing, downhill skiing, skating, ice fishing, snowshoeing, sauna, winter swimming.

**Airport:** Helsinki (HEL), Lappeenranta (LPP)

**Train station & bus stop:** Train station 0.5 km from city centre, bus station in city centre.





## INSIDER TIPS

### JENNI

The **National Urban Park** is spread around Kotka area with several unique and award winning parks such as Sapokka Water Garden and Katarina Seaside Park. Make sure to visit Langinkoski as well which is also a historical sight with its emperor's fishing lodge (see p. 8), at Langinkoski rapids. The museum is open during summer time.

### MARKO

**Katariina Seaside Park** is an attraction close to Kotka centre that never fails to charm both new and frequent visitors. The park is a perfect spot for spending a beautiful summer day outdoors, as the area features a large lawn area, a volleyball court, playgrounds for children and several picnic spots. The park's location is unique; it has been built in place of an old oil port in the southern end of Kotkansaari island's cape, and it is surrounded by the sea.

### PEKKA

Summer is the best time to visit **one of the islands** in the region's beautiful archipelago. There are hundreds of islands and some of

them have cottages for rent so you can stay overnight. To some of the islands there is a regular boat connection and ferries leave from port in Kotka or Hamina. My favorite destination is **Kaunissaari** as it has old fisherman village and the best salmon soup in the region!

### MINNA

**Hamina old town** has a unique circular plan which is quite rare on a worldwide scale. Wander around the circular streets and enjoy the atmosphere of the fortress town while exploring bastions and wooden fortress houses. Hamina also has the largest Finnish flag in the world. A flag of a basketball field size fluttering on a 100-meter flagpole is best spotted when entering Hamina from the motorway.

### TIMO

**Maritime Centre Vellamo** (see p. 4) is not just a museum. The centre hosts interactive exhibitions that will be interesting for both children and adults. Vellamo hosts national Maritime Museum of Finland, Kymenlaakso Region Museum and changing exhibitions. In summer, ice-breaker Tarmo (see p. 9), the second oldest ice-breaker in the world, is also open for public. Make sure you climb to the roof of Vellamo and enjoy scenic views of Kotka.

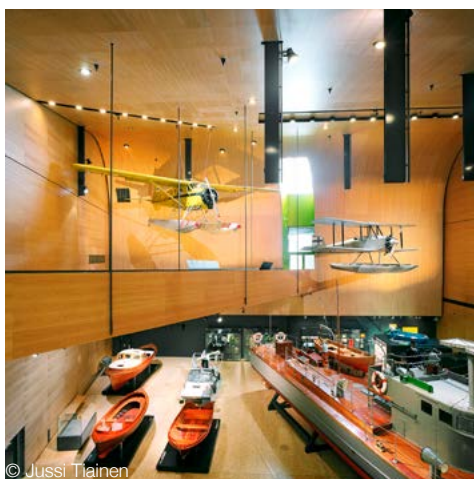




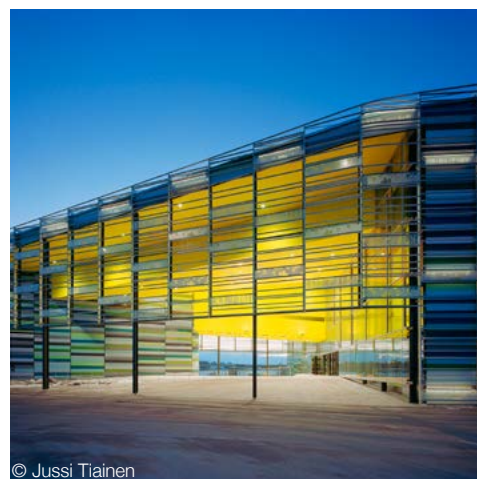
© Juha Kärkkäinen



© Timo Vesterinen



© Jussi Tiainen



© Jussi Tiainen

**Founded**  
2008

#### Languages

English, German on request for groups.

#### Season

All year-round

#### Opening hours

Mon closed, Tue 10am – 5pm, Wed

10am – 8pm, Thu – Sun 10am – 5pm

See extended opening hours for summer on the webpage.

#### Note

Easy access: there's plenty of free parking space in front of the building.

#### Contact

Maritime Centre Vellamo

Anne Rommi

Tornatorintie 99

48100 Kotka

Tel. +358 40 350 0497

[info@merikeskusvellamo.fi](mailto:info@merikeskusvellamo.fi)

[www.merikeskusvellamo.fi/en](http://www.merikeskusvellamo.fi/en)

[facebook.com/merikeskusvellamo](https://facebook.com/merikeskusvellamo)

[instagram.com/merikeskusvellamo](https://instagram.com/merikeskusvellamo)

[youtube.com/user/MerikeskusVellamo](https://youtube.com/user/MerikeskusVellamo)

## MARITIME CENTRE VELLAMO

The unique building of Maritime Centre Vellamo is located by the sea in the Kantasatama district in Kotka, surrounded by the historical port of Kotka. The location could not be more fitting.

Vellamo houses several exhibitions about life at sea and local stories, seasonal art exhibitions, various meeting and event spaces, a restaurant and a museum shop. Most importantly, Vellamo offers information and fun activities for everyone all year-round!

#### MUSEUMS & EXHIBITIONS

Maritime Centre Vellamo is home to the Maritime Museum of Finland, the Museum of Kymenlaakso and the Coast Guard Museum – all in one ticket. In addition to this, the building holds art exhibitions, a 200-seat auditorium, seminar rooms, classrooms, a restaurant with sea view, and a museum shop. In the summer time, you can also visit the Museum Icebreaker Tarmo by the museum pier (see p. 9 for more information).

#### UNIQUE ARCHITECTURE

The modern building itself is built in a shape of a massive wave. The facade consists of sheet metal cassettes, silk-screened glass panels and aluminium grids and reflect the blue, green and grey shades of the sea. As darkness falls,

lights are lit behind the glass panels.

An essential element of the interior is oak – the building material for ships, which has been used in the ceilings, walls and floors. The colours of Vellamo – lime, orange, deep blue and dark grey – and the pictures and graphical elements recur throughout the building.

Maritime Centre Vellamo was opened to the public on 11 July 2008. It was designed by Lahdelma & Mahlamäki Architects with architect and professor Ilmari Lahdelma as the main designer.

#### CATERING

Our restaurant Laakonki serves lunch during weekdays and brunch on weekends. As a cafeteria Laakonki is open during Vellamo's opening hours. For group events and parties, catering can be organized.

#### SERVICES FOR VISITORS

- permanent and temporary exhibitions
- seasonal art exhibitions
- guided tours
- workshops for children
- conference facilities and event venues, auditorium
- boat hall
- restaurant, café
- souvenir shop with locally produced products



## MARETARIUM

### AQUARIUM HOUSE MARETARIUM

Maretarium is a unique public aquarium with Finnish fish species and with information of Finnish water nature. In the Maretarium centre, there are also a cafe and souvenir shop.

### NATURAL AQUARIUM WITH LOCAL FISHES

Maretarium is a unique natural aquarium with Finnish fish species. Some species you may see both as small juveniles as old adults. Fish in Maretarium live according to the Finnish four seasons. There are 22 fish tanks in Maretarium. Sometimes a diver is giving food for the fish in the Baltic Sea tank, which has water more than 600 000 litres. Along with the aquarium tour Maretarium offers nature picture exhibitions, nature films, the Hall of Fame Gallery of Finnish Fishery and lots of information of Finnish water nature as well as water protection.

Beside the aquarium tour there are Cafe Meri Café Kristina to have some refreshments and a souvenir shop.

### GUIDED TOURS

Maretarium offers 1-hour guided tours in English.

### CATERING

Maretarium's cafe offers soup lunch every day and a great selection of coffees, mixed drinks, pastries and salty snacks.

### SERVICES FOR VISITORS

- guided tours in English (1 hour)
- nature films
- information of the national parks of the area
- nature picture exhibitions
- nature school room for the children
- Maretarium's souvenir shop articles include products of Keep the Archipelago Tidy, WWF and the Finnish Association for Nature Conservation

### Company founded

2000

### Opening

2002

### Languages

English

### Season

Year-round, except 2,5 weeks service break in December.

### Opening hours

From June to mid August every day 10am – 7pm, other time of the year Mon, Tue, Thu – Sun 10am – 5pm, Wed 12 – 7pm

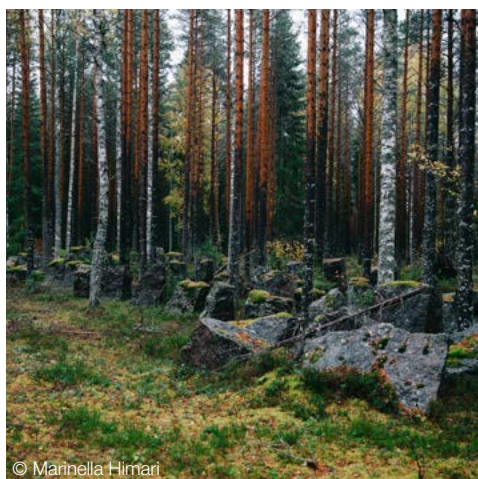
### Contact

Maretarium  
Sari Saukkonen  
Sapokankatu 2  
48100 Kotka  
Tel. +358 40 3110 331  
[sari.saukkonen@maretarium.fi](mailto:sari.saukkonen@maretarium.fi)  
[info@maretarium.fi](mailto:info@maretarium.fi)  
[www.maretarium.fi](http://www.maretarium.fi)  
[facebook.com/maretarium](https://facebook.com/maretarium)  
[twitter.com/Maretarium](https://twitter.com/Maretarium)  
[instagram.com/maretarium](https://instagram.com/maretarium)

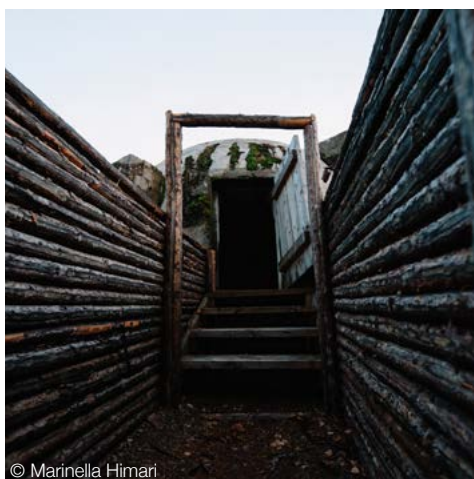




© Thomas Halloran Videotoimisto ikimedia



© Mannella Himari



© Marinella Himari



## Virolahti

Virolahti is a beautiful region with pure nature, the sea and interesting history. The area is located between the borders of East and West only 60 km from Kotka. The Arktika event brings together Finnish and international bird lovers each year.

## Contact

Visit Virolahti  
Miia Varri  
PL 14  
49901 Virolahti  
Tel. +358 40 7107 340  
[miia.varri@virolahti.fi](mailto:miia.varri@virolahti.fi)  
[matkailu@virolahti.fi](mailto:matkailu@virolahti.fi)  
[www.virolahti.fi](http://www.virolahti.fi)  
[facebook.com/Virolahti](https://facebook.com/Virolahti)  
[instagram.com/VisitVirolahti](https://instagram.com/VisitVirolahti)  
[youtube.com/channel](https://youtube.com/channel)

## VISIT VIROLAHTI

### VIROLAHTI BUNKERMUSEUM

A military history museum presenting the history of the Salpa Line fortification. Museum is part of the fortification line built during wartime in 1940-41 and 1944 to safeguard the eastern border of Finland. Due to the fact that Salpa Line was not used in war, it remains as the best preserved defence line from the Second World War still in existence in Europe. The Salpa Line is also one of the strongest and offers a chance to touch upon history in an authentic and tangible way. The permanent exhibition includes an indoor display of the wartime atmosphere and the reasons behind the construction of the Salpa Line as well as a 15-minute multimedia short film on the Salpa Line's history.

The outdoor museum area includes actual Salpa-Line fortifications amid Finnish nature. The museum is also the starting point for several hiking trails and you can hire fatbikes and GPS devices for geocaching. Greenbelt Nature Info Centre will be opened soon.

### GUIDED TOURS

**Season:** 01.04. – 31.10.  
**Duration:** approx. 1.5 h  
**Languages:** English  
**Participants:** min. 20 pax  
**Starting point:** Virolahti Bunker Museum, Vaalimaantie 1318, Virolahti  
**Starting time:** upon request

**Services:** guided tour

**Optional services:** lunch, dinner, coffee etc. for groups by reservations, Guided nature tours on the theme of the movie "Unknown Soldier", fatbike and GPS device hiring

### ARKTIKA DAYS VIROLAHTI

Arktika, as the north-bound mass migration of arctic birds is called in Finland. The most spectacular moments take place in May when millions of waterbirds and hundreds of thousands of geese migrate via the Gulf of Finland to their nesting places on the arctic tundra. The Arktika days 9 – 24 May 2020 in Virolahti provide a fascinating programme of discovery also for international visitors. Bird guides teach guests to identify the different birds, and on personally guided Arktika cruises you can even go bird-watching at sea – right alongside the Russian border.

**Season:** 09.05. – 24.05.2020

**Duration:** from 1 h

**Languages:** English

**Participants:** 20 – 65 pax

**Starting point:** Leerviikintie 120, Virolahti

**Services available:** bird guidance (max. 20 pax/guide). Bird watching cruise in the archipelago of the Gulf of Finland, 4 hrs. (including guidance), lunch or coffee breaks on request for groups





© Krista Ylinen



© Joonas Linkola



© Krista Ylinen

## MIEHIKKÄLÄ SALPA LINE MUSEUM

The Winter War between Finland and the Soviet Union took place in 1939–1940. As a result of the war, Finland lost terrain useful for defending its eastern border as the border was moved westwards in the peace treaty. The decision was made to protect the new border by constructing the Salpa Line as a line of defence extending from the Gulf of Finland to the province of Petsamo in the northern Finland.

With a total length of 1200 km, the Salpa Line is one of Europe's strongest and best-preserved World War II fortification lines. Today the Salpa Line is a national monument site and place for family tourism and recreational values.

The Miehiikkälä Salpa Line museum is situated on the most strongly fortified area of the Salpa Line. Its outdoor museum area extends to several hectares of woodland. The exhibition focuses on the history of the Salpa Line and the nature of the north eastern border of Finland, as the nature and history twine closely together on the historical fortification site.

### SERVICES FOR VISITORS

- outdoor museum area
- short film 'Finnish Salpa – The last obstacle', available also in German
- guided tours on the museum area
- exhibitions
- café and restaurant
- museum shop

- geocache trail & other activities for families
- sauna
- rental: fatbikes, military tent suitable for group accommodation

### RESTAURANTS

The restaurant and café feature 64 seats in the main building with 12 extra on the glazed and warm terrace. Between May and September there are also 80 extra customer places available in the older part of the building.

The museum café and restaurant use locally produced ingredients. Traditional Finnish home-style food with is prepared on the premises by a local enterprise using seasonal ingredients. From the beginning of May to the end of September there is a buffet lunch in the restaurant every day the museum is open. From October to April and outside the opening hours the restaurant is open by reservation. The à la carte menu is by reservation for groups minimum of 10 persons.

### FATBIKES

There are two adult size fatbikes and two that are suitable for children. The bikes can be used, for example, on the Salpatrail that goes through the museum area. The nearest resting places of the Salpatrail are at the distance that is suitable also for day travelers. The Salpatrail is a hiking route for summertime use only, with no winter maintenance.

### Founded

1987

### Languages

English, German (for groups when pre-ordered)

### Season

Best season: summer

### Opening hours

May: Wed – Sun 10am – 6pm,  
June – August: daily 10am – 6pm,  
Sept.: Wed – Sun 10am – 6pm,  
Oct. – April: Fri 12 – 2pm

### Spa & Wellness

Sauna for 10 persons at the time, modern and light electrically heated sauna with a view to the peaceful pine forest behind the building.

### Contact

Miehiikkälä Salpa Line Museum

Eila Manninen

Säästöpiirtie 70

49700 Miehiikkälä

Tel. +358 40 744 7961

[salpamuseo@miehiikkala.fi](mailto:salpamuseo@miehiikkala.fi)

[eila.manninen@miehiikkala.fi](mailto:eila.manninen@miehiikkala.fi)

[www.salpakeskus.fi/en/salpa-line-museum](http://www.salpakeskus.fi/en/salpa-line-museum)

[facebook.com/salpalinjamuseo](https://facebook.com/salpalinjamuseo)





© Jukka Koskinen



© Caj Koskinen



© Jukka Koskinen



© Jukka Koskinen

#### Company founded

1900

#### Opening

1930

#### Languages

English, Russian

#### Season

2 May – 30 September

#### Opening hours

2 May – 31 May, Tue – Sun 10am – 4pm

1 June – 31 August, Mon – Sun 11am – 6pm

1 September – 30 September, Tue – Sun 10am – 4pm

Closed on Midsummer's Eve, 19 June 2020.

Ticket sales end 30 minutes before closing.

#### Contact

Imperial Fishing Lodge

Keisarinmajantie 118

48230 Kotka

Tel. +358 (0)2 953 369 91

[langinkoski@kansallismuseo.fi](mailto:langinkoski@kansallismuseo.fi)

[www.kansallismuseo.fi/en/langinkoski](http://www.kansallismuseo.fi/en/langinkoski)

[facebook.com/langinkoskenkeisarillinen-kalastusmaja](https://facebook.com/langinkoskenkeisarillinen-kalastusmaja)

## LANGINKOSKI IMPERIAL FISHING LODGE

### EMPEROR'S FISHING LODGE

The Langinkoski Imperial Fishing Lodge is located in Kotka, 5 km away from the city centre beside the beautiful and effervescent Langinkoski rapids, on the estuary of the River Kymijoki.

The fishing hut is a summer residence built for Emperor Alexander III of Russia in the late 1880s. It is a place where the imperial family used to spend summer holidays away from the formality of imperial life in St. Petersburg: enjoying nature, fishing, cooking, picking berries and so on.

For an imperial building, the fishing hut is modest, but its style does have a simplified grace. The hut, designed by Finnish masters according to emperor's wishes, preserved in its original state. Several buildings from the same period are located in the museum area, surrounded by a nature reserve.

The fishing lodge, which was completed in 1889, is today the only preserved building outside Russia that was owned by the Emperor. The hut has been used as a museum since the 1930s.

Today, the rapids are popular among fly-fishermen and tourists can familiarise them-

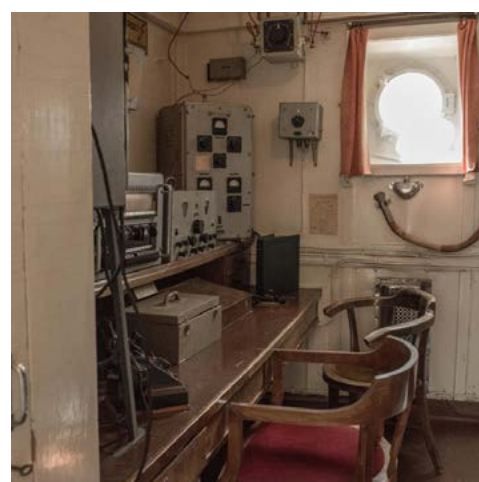
selves with imperial life in Kotka and interesting history of Langinkoski when visiting the fishing lodge.

Langinkoski is a fascinating place to visit, combining a refreshing trip to nature with the traces of the common history of Finland and Russia. The Langinkoski Park which is open all year around was declared a nature reserve in 1960. It is a unique site, an interesting cultural and nature destination for the whole family.

### SERVICES FOR VISITORS

- Museum
- Guided tours
- Exhibitions
- Events
- Cafe
- Parking





## ICEBREAKER TARMO

The icebreaker Tarmo was built in 1907 and remained in commission until 1970. Built in England (Newcastle upon Tyne), Tarmo was the Grand Duchy of Finland's third icebreaker upon its completion. As foreign trade continued to grow at the beginning of the 20th century, the two previous icebreakers, Murtaja (1889) and Sampo (1898), were no longer sufficient to keep the sea routes open for traffic during winter. Tarmo represents an American type of icebreaker with a sharp bow. During the first decades of the 20th century, it was the most powerful and efficient icebreaker in Finland, able to advance through 80 cm thick solid ice.

Before becoming a museum ship, this tough vessel saw a lot: for years it made sure that winter transports ran smoothly, assisted other vessels in distress and sustained significant damage during the Winter War bombings.

### MUSEUM SHIP

Tarmo remained in use until 1970, having been renamed Apu some years prior. After this, the decision was made to restore the ship into a museum ship. The restoration was carried out at Kotka Shipyard between 1990 and 1992. The Finnish Maritime Administration handed the restored ship over to the Finnish Heritage Agency, and in 1992 Tarmo was placed in

Kotka. Since July 2008, Tarmo has been open to the public in the museum ship pier of Maritime Centre Vellamo as part of the exhibitions of the Maritime Museum of Finland.

Experience the atmosphere on a real icebreaker, from the deck all the way to the engine room.

### GUIDED TOURS

Book a Tarmo guide to learn more and hear stories about the old ship's history during your icebreaker tour.

### SERVICES FOR VISITORS

- Guided tour
- Exhibitions
- Restaurant
- Cafe

### Company founded

1900

### Opening

1970

### Languages

English, Russian

### Season

2020: 7.5. – 18.8.

### Opening hours

12. – 31.5. Tue – Fri 10 – 17 h (only for groups), 01. – 21.6. Tue – Sun 10 – 17 h, Wed 10 – 20 h, 22.6. – 16.8. Mon – Sun 10 – 18 h, Wed 10 – 20 h, 19 – 20.6. closed on midsummer

### Contact

The Maritime Museum of Finland  
Maritime Centre Vellamo  
Tel. +358 40 350 0497  
[merimuseo@kansallismuseo.fi](mailto:merimuseo@kansallismuseo.fi)  
[info@merikeskusvellamo.fi](mailto:info@merikeskusvellamo.fi)  
[www.merikeskusvellamo.fi/en/icebreaker-tarmo/](http://www.merikeskusvellamo.fi/en/icebreaker-tarmo/)  
[facebook.com/merikeskusvellamo](https://facebook.com/merikeskusvellamo)  
[twitter.com/suomenmerimuseo](https://twitter.com/suomenmerimuseo)  
[instagram.com/merikeskusvellamo](https://instagram.com/merikeskusvellamo)





© Joonas Linkola



© Jukka Koskinen



© Tuuli Koivisto



© Joonas Linkola

#### Company founded

1998

#### Languages

English, Italian

#### Season

year-round

#### Note

Transfers always included

#### Contact

Erämys-Keisarin Kosket Oy

Sauli Orimus

Kultaanranta 124

46930 Kotka

Tel.+358 50 320 2559

[info@eramys.fi](mailto:info@eramys.fi)

[www.eramys.fi](http://www.eramys.fi)

[facebook.com/ErämysKeisarinKosketOy](https://facebook.com/ErämysKeisarinKosketOy)

[instagram.com/eramyskeisarinkosket](https://instagram.com/eramyskeisarinkosket)

## ERÄMYS

Erämys offers river rafting, canoeing, saunas, delicious food made by fire, also accommodation in luxury tents. All this in a beautiful river scenery at River Kymijoki. We offer you peace and quiet!

### RIVER RAFTING TRIP TO KULTAA-LAAJAKOSKI WITH GORGEOUS RIVER SCENERY

River rafting trip with gorgeous river scenery. In this trip one will experience three wild rapids and sense the beautiful nature of River Kymijoki. At first black pot coffee is served, then we will get ready and equipped.

Participants: 4 – 60 pax

Duration: approx. 1.5 hrs., 3 rapids

### RIVER RAFTING IN AHVIO-LAAJAKOSKI

A trip where one will experience River Kymijoki in more depth. The trip will start from Oso-lahti Huruksela, where the group gets ready and equipped. During the first part of the journey, there is one rapid and swift flow. Half way through the group will land at Kultaan Koskityla, have a break and enjoy black pot coffee. After the break the trip continues towards Pernoo's rapid district.

Duration: approx. 2.5 hrs., 5 rapids

### WILD RAFTING FROM KULTAA TO THE SEA, PEACE & QUIET & EXCITEMENT

This trip is weather dependable; water height needs to be at a certain level for us to be able to arrange this trip. However, this route is an experience! The trip starts from Kultaan Koskityla and goes through three rapids in Pernoo. From there the trip continues with engine power to Koivukoski, where a black pot coffee will be served. After the break the trip goes on towards two nice rapids. The group paddles a kilometre and for the grand finale the trip goes through Langinkoski. River Kymijoki shows its best sides in this route.

Participants: max. 10 pax/ raft

Duration: 3.5 – 4 hrs., 6 rapids

#### Information that applies to all products:

Season: 01.04. – 15.11.

Participants: min. 5 pax, max. number is always depending on the tour

Minimum age: 5 years

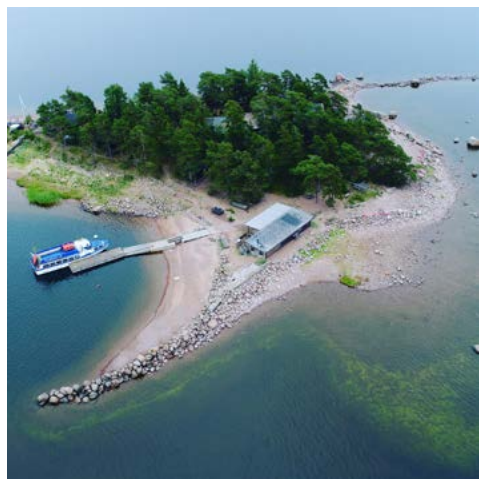
Services: rainwear, wellies/rubber boots, helmet, life vest included in the price; coffee and sweet treat, information, river rafting is always guided

Optional services: Meals, Sauna





© Sofia Virtanen



© Sofia Virtanen



## KOTKAN SAARET

Kotka Saaret offers special accommodation and restaurant services.

### ACCOMMODATION

36 hotel rooms, 8 hostel rooms for 10, apartments for 10, cottage for 26 in Ollinkarit (rent own island)

### Number & type of accommodation:

**Karhulan Hovi:** Manor hotel in Karhula, Kotka. There are 13 rooms in the manor with facilities for 1 to 3 persons, baby beds are also available. 1 suite.

In the guesthouses, there are 9 rooms for 1 to 3 persons, baby beds are also available. Some rooms with shared facilities. 1 large sauna in the manor's basement.

**Haminan Seurahuone:** 12 rooms for 1 to 3 persons with facilities. Free parking available. Buffet lunch restaurant and basement pub.

**Ollinkarit private island (for 1 group per time):** 13 rooms, each with 2 separate beds, with shared facilities. Eco-toilets. 2 saunas and sea water hot tub.

The accommodation is situated on an island, 5 km from Kotkansaari, 10 – 30 minutes by boat.

### Rankki – former military island:

5 retro-apartments for 1 to 6 persons, with kitchen and bathroom.

8 large rooms in military barrack, for 10 persons, similar to a hostel dorm.

2 restaurants, saunas, a small shop, nature trail.

There are a lot of historically interesting attractions on the island: an old barrack, coast artillery, bunkers, the foundation of the old light-house, magnificent sea nature, a great view over sea to Gogland – Russian island (30 km). Rankki is 9 km from Kotkansaari, 15 – 45 minutes by boat.

### Equipment of accommodation facilities:

basic equipments, towels included

### RESTAURANTS

There is one bar/ restaurant in every destination.

Kotka Saaret also operates the traffic station Teboil Rajahovi, which is a popular buffet lunch restaurant near the Russian border at Vaalimaa along the E18. It's a great place to eat for large groups

**Company founded:** 2000

**Accommodation built:** 1893 – 1960

**Accommodation last renovated:** 2010

**Languages:** English, Russian

**Season:** Hotels 01.01. – 31.12.2020

**Islands** 01.05. – 30.10.2020

**Spa & Wellness:** 1 sauna in Karhulan Hovi, 2 saunas in Ollinkarit – rent your own island, 2 saunas in Rankki island

**Note:** dogs and pets are allowed but with limitations, next supermarket in 500m or less from hotels, free parking available

**Winter activities:** 30 km to downhill skiing center, less than 1 km to iceskating

**Summer activities:** boat trips, cruises, guided tours, yoga by sea, escape room games, nordics fear factory by Santa Claus, army style nature dinner

**Arrival:** Helsinki airport (140 km), next train stations 10 – 30 km, airport transfer offered

### Contact

Kotka Saaret Oy

Kymilinnantie 22

48600 Kotka

Tel. +358 44 055 7493

[myyntipalvelu@kotkansaaaret.fi](mailto:myyntipalvelu@kotkansaaaret.fi)

[www.kotkansaaaret.fi](http://www.kotkansaaaret.fi)

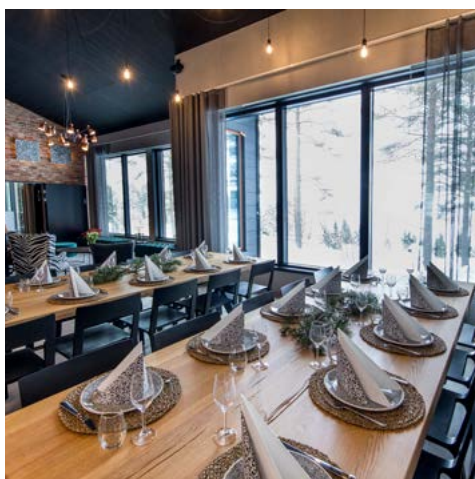
[www.karhulanhovi.fi](http://www.karhulanhovi.fi)

[www.haminanseurahuone.fi](http://www.haminanseurahuone.fi)

[www.rankki.fi](http://www.rankki.fi)

[facebook.com/kotkansaaaret](https://facebook.com/kotkansaaaret)





**Founded:** 1991

**Languages:** English, Russian, Swedish, French

**Season:** 01.01.2020 – 31.12.2020

**Restaurants:** Santa Café, Santalahti Restaurant, Restaurant Holari

**Spa & Wellness:** 3 sauna departments: Two electric saunas and a Cave Sauna Spa. Cave Sauna Spa includes a smoked sauna built underground and a heated pool. All of the saunas have a magnificent view to the open sea.

**Special services for children:** Two outside playgrounds, minigolf, safe beach

**Note:** dogs allowed, next supermarket in 3km, free parking available

**Arrival:** distance to nearest airport 129 km, train station 6 km, no airport transfer

#### Contact

Santalahti Resort  
Santalahdentie 150  
48310 Kotka

Tel. +358 5 260 5055

[info@santalahti.fi](mailto:info@santalahti.fi)

[www.santalahti.fi/en](http://www.santalahti.fi/en)

[facebook.com/SantalahtiResort](https://facebook.com/SantalahtiResort)

[instagram.com/santalahtiresort/](https://instagram.com/santalahtiresort/)

[youtube.com/channel/](https://youtube.com/channel/)

## SANTALAHTI RESORT

Santalahti is a five-star resort surrounded by sea and nature. We have accommodation options for every taste, from campsites and cosy cottages to luxury villas. Meetings and celebrations can be arranged at our high-class facilities and saunas, accompanied with delicious catering options. We are located about 5 km from the Kotka city centre and only a bit over an hour's drive from Helsinki.

### ACCOMMODATION

**Number & type of accommodation:** In addition to a five star camping site, we have 42 cottages and apartments: 2-person Glamping cottages, 4-person Glamping cottages, 2-person Shower cottages, 4-person Shower cottages, 5-person Sauna cottages, 10-person Luxury apartments, 18-person Villa Aava.

**Equipment:** 5-star camping site – 120 spots with electricity, 3 service buildings include a TV room, a playroom for children, showers and toilets, washrooms for clothes, a kitchen, dishwashing areas, a barbeque area, a playground chemical toilet disposal points, a fixed waste-water drain and a car-wash area.

**Glamping cottages** – Shared bathroom (on service building nearby), kitchenette, flat-screen TV, terrace

**Shower cottages** – Shower, toilet, open-plan kitchen, flat-screen TV, Wi-Fi, terrace

**Sauna cottages** – Sauna, shower, toilet,

open-plan kitchen, dishwasher, flat-screen TV, Wi-Fi, terrace

**Luxury Apartments** – Fireplace, flat-screen TV, Wi-Fi, terrace, washing machine, dishwasher, electric grill, open-plan kitchen, sauna, shower, 3 toilets, 5 bedrooms

**Villa Aava** – Fireplace, 2 flat-screen TVs, Wi-Fi, 2 terraces, 2 washing machines, 2 dishwashers, 2 open-plan kitchens, 2 sauna sections, 3 toilets, 10 bedrooms with own toilets, 2 video projectors, audio system

### HALF DAY WITH SAUNA – PACKAGE

Evening at Santalahti Resort facilities and relaxing time in the Cave Sauna Spa.

**Season:** 02.01.– 31.12.2020 (excluding holidays)

**Duration:** 10 hours

**Languages:** English

**Participants:** 1 – 35 pax

**Starting time:** 2pm

**Starting point:** Santalahti Resort reception

**Services:** towels, seat covers and toiletries are included

**Optional:** meals, accommodation, activities (miniature golf, stand-up paddle boards etc.).

**Note:** For bigger groups (over 15 persons) we can offer VIP saunas free of charge.





© Krista Ylinen



© Joonas Linkola



## VIMPA ISLANDS

Vimpasaari cottages on land are built for year-round use and they are located in peaceful nature, right next to the sea shore. Nearby activities include biking, hiking, fishing, berry and mushroom picking, as well as skiing, ice fishing, hovercraft and boat trips, bird watching in winter.

In Rakinkotka Island cottages one can spend an unforgettable holiday enjoying breathtaking nature, with its forest trails and sandy beaches, mesmerises any traveller. There is much to see and do for everyone, and hundreds of years worth of history. All cottage prices include boat trips to the island and back, use of beach sauna, wireless internet, rowing boat, grill, firewood, and of course, free access to the island and its nature. For additional charge: hot tub, smoke sauna, bed linens, towels, meals, outboard motor.

### ACCOMMODATION ON THE MAINLAND

**Number & type of accommodation:** 3 cottages, available year-round. 3 cabins, available from May – October

**Villa Vimpa Island:** Holiday house in beautiful surroundings, right on the beach, 240 m<sup>2</sup> for 12+2 pax

**Vimpa Seaside House:** Holiday home right by the sea with fantastic views to the Gulf of Finland. The cosy, glassed-in sun lounge with changing sea views. 92 m<sup>2</sup> for 3+2 pax

**Villa Vimpa Bay:** Holiday villa on a peaceful, sunny sea shore, 100 m<sup>2</sup> for 7 pax

**Cabins:** 3 traditional, idyllic cabins, for 12 pax in total

### ACCOMMODATION ON THE ISLAND OF RAKINKOTKA

**Number & type of accommodation:** 4 cottages, available from May-October

**Eagles's Nest:** Beautifully restored log building on a cliff top, on the sunny western shore, 120 m<sup>2</sup>, for 11+1 pax

**Suomu's cabin:** A cosy island cottage in a panoramic location, 45 m<sup>2</sup>, for 4 + 2 pax

**Seagull's nest:** Built originally in 1880s and then moved to the island, this log cottage has been beautifully restored. 60 m<sup>2</sup> for 4+3 pax

**Night Ghost:** Recently renovated, charming island cottage amidst nature, 45 m<sup>2</sup>, for 7 pax

### CHIEFTAIN RUHRIG'S FEAST

Experience Hamina archipelago as a Viking, relax around the camp fire and learn the life-style of Vikings. There will be hanging out, Viking themed activities, relaxation and sauna, as well as a true feast in the evening.

**Season:** from May to October, in mainland all year round. **Duration:** 6 hrs.

**Languages:** English.

**Participants:** 5 – 10 pax (inquire for bigger groups), max summer 80, winter 60 persons.

**Services:** transfer Vimpasaari-Rakinkotka and back, 3-course menu, activities, equipment rental **Optional:** accommodation, sauna visit, use of the whirlpool, Viking helmet

**Founded:** 1999

**Accommodation built:** 2005-2015

**Accommodation last renovated:** 2018

**Languages:** English

**Season:** year-round

**Note:** Family run

**Catering:** Gastronomic services on request

**Spa & Wellness:** 3 saunas in Rakinkotka Island, two of them are described in product details. But there is also a special rock smoke sauna which will be heated on request (see pricing below.) 3 saunas on mainland

**Note:** small pets allowed on mainland, next supermarket in 7 km, free parking available

**Arrival:** Airport Helsinki (150 km), Train stations Kouvola (50 km), Kotka (25 km), transfer to the airport on request

### Contact

Vimpa Islands

Perti Illi

Vimparaitti 29, 49400 Hamina

Tel. +358 50 62117

[persti.illi@vimpa.com](mailto:persti.illi@vimpa.com)

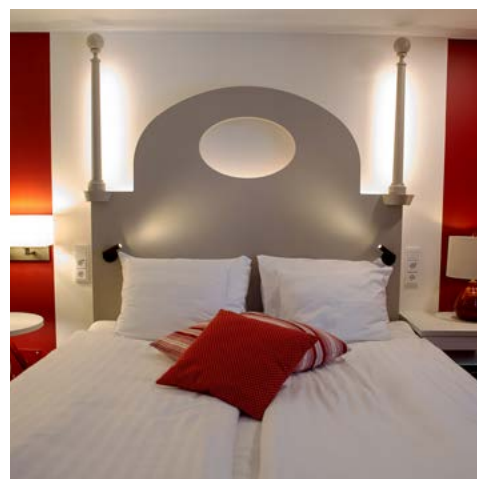
[www.vimpa.fi/en](http://www.vimpa.fi/en)

[facebook.com/Vimpaislands](https://facebook.com/Vimpaislands)

[instagram.com/vimpaisland](https://instagram.com/vimpaisland)

[youtube.com/watch?v=G\\_oRZDt62xk](https://youtube.com/watch?v=G_oRZDt62xk)





**Founded:** 1974

**Accommodation built:** 1961

**Accommodation last renovated:** 2019

**Languages:** English, Swedish

**Restaurants:** 3 Restaurants (Amarillo, Frans & Rosalie-bistro, VENN)

**Spa & Wellness:** The room prices of Original Sokos Hotel Seurahuone includes customer sauna. The sauna is on the 8th floor and is available every evening Mon – Thu from 4pm. – 10pm and Sat – Sun 7am – 10am

**Special services for children:** A spacious room with a double bed and a bunk bed, decorated in the beach house style. Also suitable for larger families, playground near hotel.

**Note:** dogs allowed (extra charge), parking available (extra charge)

#### Contact

Original Sokos Hotel Seurahuone Kotka

Sales Service of S Group

Keskuskatu 21

48100 Kotka

Tel. +358 10 783 9100

[sales.kymenseutu@sok.fi](mailto:sales.kymenseutu@sok.fi)

[kotka.seurahuone@sokoshotels.fi](mailto:kotka.seurahuone@sokoshotels.fi)

[www.sokoshotels.fi](http://www.sokoshotels.fi)

[facebook.com/kotkanseurahuone](https://facebook.com/kotkanseurahuone)

[instagram.com/seurahuonekotka](https://instagram.com/seurahuonekotka)

## ORIGINAL SOKOS HOTEL SEURAHUONE

At Original Sokos Hotel Seurahuone, you can sense the vicinity of the sea all year-round. The hotel is located right in the city centre, on Kotkansaari island, surrounded by the sea and services.

At Seurahuone, you can enjoy wonderful sauna moments over the city rooftops because the roof terraces of all three saunas provide magnificent views over the city. The hotel gym and the excellent jogging areas in the city parks provide challenges for athletic hotel guests.

The genuinely Finnish, traditional Original Sokos Hotel Seurahuone is always a great choice. Restaurant Frans & Rosalie bistro tempts city residents and hotel guests with rural French delicacies. The relaxed atmosphere at the Amarillo restaurant, the deliciously spicy food and top artists of Finland performing on stage are a great combination for those looking for some action. Restaurant VENN you can enjoy delicious pizzas and cocktails with your own friends or you can also borrow some of ours.

Kotka also has activities for the whole family. Maretarium, the natural aquarium for Finnish fish, and the Vellamo sea centre provide interesting things to see and experience all year-round, not forgetting the archipelago adventures in the summer.

Welcome to the seaside city of Kotka!

### ACCOMMODATION

**Number & type of accommodation:** 164 rooms, Standard rooms, Family rooms, Superior rooms, Exclusive rooms, Suite

**Equipment:** electric kettle, minibar, safety box, telephone, air condition, ironing facilities, heating, cable channels, laptop safe, flat-screen TV, Chromecast in TV, wake-up service, hair-dryer, free WiFi, no smoking.

### RESTAURANTS

**Amarillo:** The new Amarillo brings together both friends and strangers. Amarillo is fresh, fair, straightforward and energetic with great food and beverages. You must experience yourself.

**Frans & Rosalie-bistro:** Frans & Rosalie is a relaxed, French-style bistro that combines the love of french food with tasty wine and great company.

**VENN:** There is nothing more valuable in the life than friends, wine and good food. All of these you can find VENN. VENN offers simple and delicious food, tasty wines and awesome cocktails.



