

# ÄHTÄRI

Finnish Lakeland

FINLAND 2021/22



© Timo Ahopelto/ Ähtäri Zoo



© StudioArt4You Oy

PRODUCT MANUAL FOR TOUR OPERATORS

Version 1: September 2020



# ÄHTÄRI REGION

## ÄHTÄRI REGION

### FINNISH LAKELAND AT ITS MOST IDYLIC

Ähtäri is in the middle of Finland: only 300 km north from Helsinki, a two hour drive from the port of Vaasa as well as Tampere airport.

Ähtäri offers a wide variety of accommodation, from hotel rooms and cottages, to bed and breakfast and camping.

Our nature is easily accessible: forests with berries and mushrooms, over 100 lakes to swim in and nature trails of various lengths that anyone can use for free.

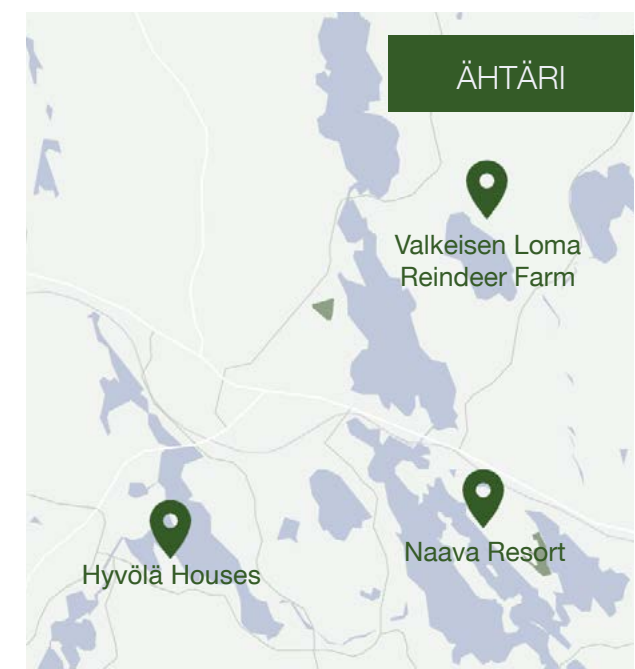
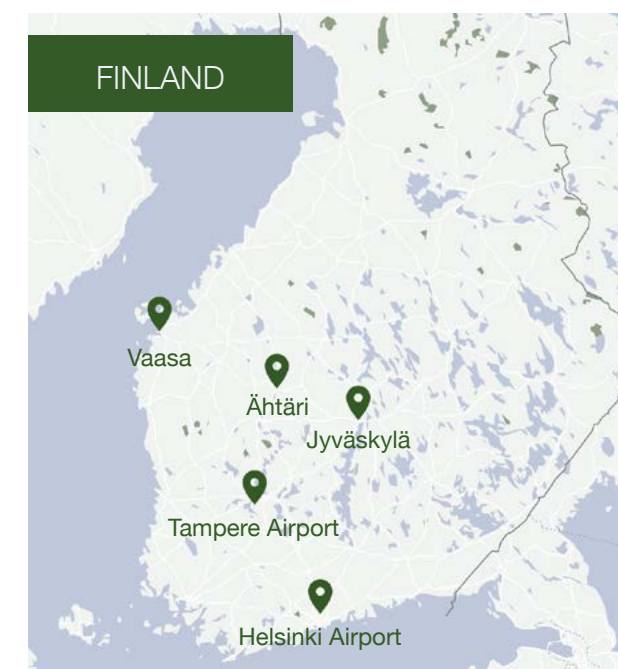
In summer you must try a midnight sauna and swim, and rent a kayak to search for wildlife such as beavers and wild birds. In winter you must experience the silence on the frozen lake while walking, kick-sledding or ice-fishing.

#### Ähtäri's USPs:

- Unspoilt nature and peaceful countryside with small and large lakes
- Attractive old wooden houses and cottages, as well as modern architecture villas
- Fishing activities, nature trips, Finnish saunas and visits to Reindeer Park all year round
- Ähtäri Holiday Resort with services and Ähtäri Zoo, where you will see over 50 animal species from Finland, the Nordic countries and Asia. At Ähtäri Zoo you can meet and learn from Scandinavian animals in a natural, Scandinavian forest location and meet the northernmost pandas in Europe in Snowpanda House.

#### Accommodation in Ähtäri region

- **Hyvölä Houses:** Cosy apartments in an authentic 19th century milieu and premium cabins by the lake.
- **Naava Resort:** High-quality villas and apartments by the lakeside, with the best locations in Ähtäri.
- **Valkeisen Loma Reindeer Farm:** A farm hotel, reindeer park and unique holiday apartments in Ähtäri's idyllic and authentic rural milieu.



**Hiking trails in km:** Different trails from 2.7 km to 15 km, a total of 100 km

**Skiing tracks in Ähtäri:** 150 km

**Snow season:** Approx. end of December - end of February

**Winter activities:** Skiing, ice fishing and net fishing, guided fishing trips, skating on natural ice, snowmobile safari, reindeer sleigh rides, cross-country skiing, sled hill for children, snowshoeing, snowshoe frisbee golf

**Summer activities:** Hiking, FlowPark Adventure park, berry and mushroom picking, motorboat rental, fishing and guided fishing trips, kayaking and guided kayaking trips, canoeing and guided canoeing trips, SUP boards, golf course, fat biking, frisbee golf course, bird watching

**Year-round activities & services:** Ähtäri Zoo, Snow-Panda House, bowling, Reindeer Park visits, sauna services and peat treatments

**Accessibility:** Airports Helsinki 320 km, Tampere 148 km, Vaasa 150 km, Jyväskylä 115 km; train station in Ähtäri

#### CONTACT

Visit Ähtäri

[visitahtari.fi](http://visitahtari.fi)

[hyvolantalo.com](http://hyvolantalo.com)

[naavaresort.fi/en](http://naavaresort.fi/en)

[valkeisenloma.com/en](http://valkeisenloma.com/en)

[facebook.com/visitahtari](https://facebook.com/visitahtari)

[instagram.com/visit.ahtari](https://instagram.com/visit.ahtari)





# HYVÖLÄ HOUSES

## MANOR HOUSE, LOG CABINS

Traditional Hyvölä Manor is located in Ähtäri, in the middle of Finland, in the district of Ostrobothnia. The manor house is surrounded by beautiful lakeland scenery and Ähtäri Zoo, which specialises in animals from the Northern hemisphere and the Scandinavian forest zone, is located nearby. Hyvölä Houses - lovely log cabins – are ideally suited to those who wish to stay in a well-equipped and comfortable lakeside log cabin.

### ACCOMMODATION

Hyvölä Houses offers high quality cottage accommodation by the beautiful Lake Ouluvesi in Ähtäri. You can stay at one of the three high-quality cottages that can accommodate up to eight people or choose the historical mansion built in 1800's offering cosy rooms. The cottages are of high quality (5 star) and are well suitable for e.g. families, couples or eager fisherman.

### LOG CABINS

Log-built cabins provide spacious living spaces. Each villa has three bedrooms, accommodating up to 8 people in total, two toilets (one on each floor), and a sauna complete with large shower room and changing room. They are set within wonderful, rocky lakeside scenery on the eastern side of the lake Ouluvesi.

### DETAILS

**Founded:** 1991 - family-run local company  
**Built:** Accommodation built between 2009 - 2018  
**Season:** Year-round

**Languages:** English, website available in German  
**Number & type of accommodation:** 3 cottages, guest rooms  
**Hilla:** 120 m² for 8 pax, 3 bedrooms, built in 2018  
**Juolukka:** 116 m² for 8 pax, 3 bedrooms, built in 2009  
**Puolukka:** 116 m² for 8 pax, 3 bedrooms, built in 2009, pets allowed  
Each cottage has sauna and own rowing boat as well as a barbeque on the terrace. Each cottage has its own sandy beach, suitable for children. Grill hut can be used by guests with no charge e.g. for barbecuing  
**Guest rooms at the historical manor house:** The historical mansion offers accommodation in rooms for 1-4 persons.

**Accommodation facilities:** All cottages are well equipped including a fully equipped kitchen (electric stove, coffeemaker, freezer, microwave oven, dishwasher, tableware etc.), tap water and warm running water, sauna, washing machine, indoor toilet, television, free internet connection, air conditioner, cleaning equipment, electric heating, rowing boat with safety jackets, firewood available for use etc.  
**Manor house:** Toilet and shower facilities are shared.  
**Spa & Wellness:** Outdoor hot tub available for extra fee.  
**Summer activities:** Berry and mushroom picking, rowing boat trips, trips to local forest, motorboat rental, fishing and guided fishing trips, kayaking and guided kayaking trips, smoke sauna, hot tub, Ähtäri Animal Park and Panda House (10 km), golf course (10 km), bowling (10 km)  
**Winter activities:** Ice and net fishing and guided fishing trips, cross-country skiing tracks (skis can be borrowed for free), skating on natural ice nearby, Ähtäri Zoo and Panda House  
**Rental:** Motor boats, smoke sauna, hot tub, kayaks, fishing equipment  
**Packages:** Fishing breaks, winter fishing breaks and self-catering summer holiday packages  
**Note:** Pets are allowed in some cabins; next supermarket in 2.6 km, free parking available  
**Accessibility:** Airports Tampere 148 km, Helsinki 316 km, Vaasa 155 km, Jyväskylä 121 km, train station Ähtäri 6 km

**CONTACT**  
Hyvölä Houses  
Ari Hyvölä  
Kaijantie 133  
63700 Ähtäri  
Tel. +358 400 216 326  
[hyvolantalo@hyvolantalo.com](mailto:hyvolantalo@hyvolantalo.com)  
[www.hyvolantalo.com](http://www.hyvolantalo.com)  
[facebook.com/HyvolaTalo](https://facebook.com/HyvolaTalo)

## Self-catering summer holidays in Ähtäri, Finland 4 nights (2020-2022)

Spend a self-catering summer holiday in Hyvölä Houses lovely log cabins. During your stay, you will have time to explore the local lake with a guide, visit the Ähtäri Zoo and enjoy the great outdoors.

### Day 1: Arrival at Hyvölä Houses

Check into your log cabin.

### Day 2: Kayaking on the lake

Today you will start exploring the area by means of a guided kayaking trip. It will be a time to enjoy the silence of the lakeside and discover the beauty spots of the neighbourhood. Duration 2-3 hours.

### Day 3: Meet the giant pandas, wolves and bears

Ähtäri Zoo, Finland's oldest animal park set in a natural environment, is the main attraction in the area. Ähtäri Zoo specialises in animals from the northern hemisphere and the Scandinavian forest zone. There are over 50 different animal species living within a natural environment, and the zoo's most important task is to protect biodiversity and endangered species. Ähtäri Zoo welcomed two giant pandas from China in 2018. These animals are the first pandas to arrive in the Nordic countries, which makes them a real Ähtäri Zoo highlight.

### Day 4: Explore the neighbourhood

You may wish to take a rowing boat out onto the lake, or perhaps visit the local town of Ähtäri. Or you may just wish to relax and take it easy!

### Day 5: Departure

Goodbye and thank you for your visit.



**Season:** 01.01.2020 - 31.12.2022  
**Duration:** 4 nights  
**Languages:** English  
**Participants:** 2 - 6 persons  
**Services included:** Accommodation for four nights a log cabin, with linen, final cleaning, guided kayak trip, tickets for Ähtäri Zoo and the Snowpanda House  
**Optional services:** Fishing guide for 3 h, hot tub for 4 days, smoke sauna evening, additional nights



## FISHING BREAK

## Fishing holidays at lake Ouluvesi, Finland 4 nights

Hyvölä Houses is located in Ähtäri, in the middle of Finland, where many lakes meet. Hyvölä manor house has been standing proudly on the shores of Lake Ouluvesi for centuries and for generations fish has been caught from the nearby lake.

Now you can stay in one of the well-equipped cabins by the lake and dedicate your days to fishing. You can fish here all year round, although perhaps the most ideal time of the year to catch fish is from May to June or from August to October. You are likely to catch perch, zander or pike by spinning, angling or jigging.

Initially, in order to find the best spots and learn the best fishing techniques for the season, you may wish to hire a local fishing guide. After the whole day out on the lake, you may wish to wind down in the evening in a hot tub or even bathe in a traditional Finnish smoke sauna (for additional cost).







# NAAVA RESORT

## HIGH-QUALITY VILLAS & CHALETs

Would you like to have a private, stress-alleviating holiday in Nordic surroundings? At Naava Resort's high-quality villas, you will unwind and recharge your batteries whilst taking in the peacefulness of Finnish Lakeland, walking in the midst of the calming, natural environment and experiencing special peat treatment in the exclusive spa area.

### ACCOMMODATION

Naava resort villas are located a short step from scenic Lake Hankavesi. Full-height glass walls let you enjoy the enchanting lake view from the comfort of your own villa, or from your private outdoor jacuzzi. Up to eight people can share one villa.

### DETAILS

**Founded:** 2011 - owner-run local company

**Built:** 2011-2013

**Season:** Year-round

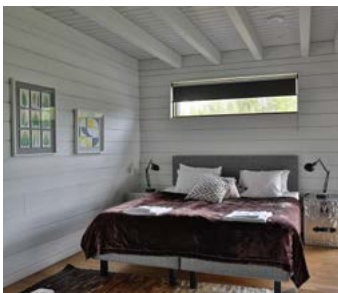
**Languages:** English

**Number & type of accommodation:** Naava Resort's ten villas and chalet apartments are spacious and well-equipped in a premium location by Lake Hankavesi.

**Villa Loiste:** 170 m² for 10 pax, 5 bedrooms

**Villas Laaka, Laikka, Luppö and Tiera:** 118 m² for 8 pax, 3 bedrooms + loft

**Chalets:** 43-61 m² for 2 + 2 pax, 1 bedroom



### Accommodation facilities:

**Villas:** All holiday villas are well-equipped including a fully equipped kitchen (induction cooktop, fridge, coffee maker, microwave oven, tableware etc.), sauna, washing machine with dryer, television and blu-ray home theatre, free internet connection, automatic air conditioning, indoor and outdoor fireplace etc. Villa Laaka has its own pier, other holiday villas have a joined pier (distance to lake max. 50 m from each villa).

**Chalets:** All chalets are well-equipped including a fully equipped kitchen (induction cooktop, fridge, coffee maker, microwave oven, tableware etc.), sauna (3 chalets have own sauna, 2 without own sauna), washing machine, television and blu-ray home theatre, free internet connection, automatic air conditioning etc.

**New Saunarestaurant Kiulu:** 2 saunas, restaurant facilities, peat treatments available, SUP boards and canoes for rent. Kiulu is open for FIT in summer and winter during weekends (by prior reservation for groups during the week in winter).

**Summer activities:** Canoeing, hiking, adventure park, golf course, SUP boards, sauna and wellness treatments, bowling alley, Ähtäri Zoo

**Winter activities:** Lighted ski trails, marked snowmobile trails, sauna and wellness treatments, bowling alley, Ähtäri Zoo

**Note:** Pets not allowed, supermarket in 7 km, free parking available

**Accessibility:** Airports Tampere 155 km, Helsinki 310 km, Vaasa 160 km, Jyväskylä 115 km, train station Ähtäri Zoo 1.6 km

### CONTACT

Naava Resort

Kari Vainio

Mesikuja 4, 63700 Ähtäri

Tel. +358 40 560 8455

[info@naavaresort.fi](mailto:info@naavaresort.fi)

[naavaresort.fi/en](http://naavaresort.fi/en)

[facebook.com/naavaresort](https://facebook.com/naavaresort)

[instagram.com/naavaresort](https://instagram.com/naavaresort)

### Luxurious stay at Naava Resort

3 nights (2020-2021)

Enjoy a holiday of luxury at Naava Resort. The villas and chalets are a very high standard, with stylish interior and decor and offer an unforgettable experience in breathtaking scenery by the Lake Hankavesi. During this holiday you can enjoy various outdoor programs and different restaurants at the area of Ähtäri Destination. You have a chance to relax in the new Sauna-Restaurant Kiulu and Jacuzzi. Naava Resort is located close to the Ähtäri Zoo and here you have the opportunity to observe moose, wolves and even giant Pandas! And if you're lucky, you will be able to see the Northern Lights from your own personal Jacuzzi.

### Day 1: Arrival at Naava Resort

Checking in to your high-quality lakeside villa.

### Day 2: Local forest and outdoor jacuzzi

Today you can explore the neighbourhood. You can either take a walk in the woods, visit local restaurants or the golf centre, all a short hop from the villa. Or you can just cosy up by the fireplace and admire the lake views. Your own outdoor jacuzzi is also waiting for you.

### Day 3: Peat sauna spa at saunarestaurant Kiulu

In the new saunarestaurant Kiulu, you will enjoy a peat sauna and massage. This unique, 5,000 to 6,000-year-old peat has been extracted from local marshland and it is used in many ways in peat therapy treatments. It significantly increases your rate of metabolism, and the bioactive particles treat your skin. At Kiulu, a sauna, shower and dressing rooms are available.

### Day 4: Goodbye

After checking out, you may wish to visit nearby Ähtäri Zoo where you will not only meet Nordic animals in their natural settings but also get acquainted with the giant pandas in the Snowpanda House.



**Season:** 2020 - 2021

**Duration:** 3 nights

**Languages:** English

**Participants:** 2 - 8 persons sharing one villa

**Services included:** 3 nights in Naava villas, use of outdoor jacuzzi, peat sauna, massage

**Optional services:** Tickets for Ähtäri Zoo and the SnowPanda House







# VALKEISEN LOMA REINDEER FARM

## COUNTRY HOTEL, APARTMENTS, COTTAGES & REINDEER PARK

Valkeisen Loma Reindeer Farm is open year-round and offers comfortable accommodation in a newly built country hotel or in rustic, yet cosy apartments and cottages. We are situated in Ähtäri, tucked away in a secluded spot and it is the perfect location for a relaxing and peaceful farm holiday. In the farmyard, you may come across our resident dogs, cats, bunnies, sheep, horse, pony and of course – reindeer! When you visit our reindeer park, you'll feel like you're in Lapland. You can feed our reindeer with lichen or you may wish to join the reindeer walk through neighbouring woodlands.

### ACCOMMODATION

**Country hotel Aurinkorinne** was opened in 2018 and provides bright, comfortable double rooms and family rooms with easy access to the nearby natural environment. All rooms are en-suite and have either a double bed or two singles, each room for two guests (15 m²). **Emilia's chamber** is located in one of the farmyard buildings. It has one double bed and a large sofa bed. It is suitable for wheelchair users as there is a ramp, wide doorways and accessible toilet facilities. Cosy **Granny's Cottage** reminds of the olden days and is the perfect place to enjoy the Finnish farm life. One-bedroom Granny's Cottage has an open plan living space featuring an old, cast iron stove. Granny's cottage is 31 m² and accommodates up to 2+2 pax and a baby. **Apartment Tuomas** is a two-bedroom timber-built apartment located in the farmyard within easy reach of the outdoor life. Apartment Tuomas is 45 m² and is suitable for a family for up to 2+4 people.



### DETAILS

**Founded:** The current family who owns and operates the place started in 2007 **Built:** Country hotel Aurinkorinne 2018, other units older  
**Season:** Year-round **Languages:** English  
**Number & type of accommodation:** Aurinkorinne: 4 x 2 persons rooms (15 m²) and 6 x family rooms (2 + 2 pax, 25 m²), Emilia's Chamber (19 m²), Granny's Cottage (31 m²) and Apartment Tuomas (45 m²)  
**Accommodation facilities:** Hotel Aurinkorinne: private bathroom, TV, fridge, coffee maker, free wi-fi, free use of linen and towels, an individual outside terrace area. There is a well-equipped communal kitchen area with dining tables for all hotel customers to use. Emilia's chamber: 140 cm wide double bed, a large sofa bed (160 cm), fridge, microwave oven, coffee maker, basic set of kitchenware, TV. Granny's Cottage: TV, a small kitchenette area (fridge, stove, microwave, coffee maker, electric kettle, kitchenware), a bathroom with shower. Apartment Tuomas: kitchen with fridge, stove, microwave oven, coffee maker, electric kettle and kitchenware.  
Cots are available upon request.  
**Spa:** 3 rentable saunas incl. a beach sauna and smoke sauna.  
**Summer activities:** Hiking, canoeing, rowing, cycling, lakeside sauna and swimming, Ähtäri Zoo visits, reindeer park visits/ walks  
**Winter activities:** Cross-country skiing, snowshoe walks, reindeer park visits /reindeer walks/ rides, ice fishing, Ähtäri Zoo  
**Rental:** Cross-country skis, bicycles, snowshoes, canoes  
**Note:** Pet-friendly accommodation options: Granny's Cottage and Emilia's Chamber; supermarket in 9.5 km, parking places available  
**Accessibility:** Airports Tampere 148 km, Helsinki 316 km, Vaasa 160 km, Jyväskylä 115 km, train station Ähtäri Zoo 6 km

### CONTACT

Valkeisen Loma Reindeer Farm  
Auni and Altti Syrjänen  
Valkeisentie 157, 3700 Ähtäri  
Tel. +358 50 5666843/ Altti, Tel. +358 50 5336045/ Auni  
[valkeisenloma@valkeisenloma.com](mailto:valkeisenloma@valkeisenloma.com)  
[valkeisenloma.com/en](http://valkeisenloma.com/en)  
[facebook.com/ValkeisenLoma](https://facebook.com/ValkeisenLoma)  
[instagram.com/valkeisenloma](https://instagram.com/valkeisenloma)

### Countryside holiday at the reindeer farm 3 nights (2020-2021)

#### Day 1: Arrival at Valkeisen Loma Reindeer Farm

Checking into either a comfortable family room or a farm cottage.

#### Day 2: Walk with the reindeer & leisure spa

After a hearty breakfast, you will get to know our reindeer by walking with them through the local woods. A small herd of reindeer (who all have their own names and characteristics!) will keep you company. In wintertime, you may be able to enjoy a sleigh ride for additional fee. Afterwards your host will tell you stories about reindeer farming while you enjoy coffee or tea served with a pastry. You may also want to try your hand at some reindeer lasso throwing. In the afternoon you are welcome to visit the local leisure spa with its pools and saunas.

#### Day 3: Trip to local woods

Today you will take a self-guided trip to the local woods. In the summer you may go by bike or on foot, in the winter perhaps by skiing or by snowshoes. Depending on the season, you may be able to pick some berries or mushrooms, or just enjoy the beauty and peacefulness of the forest. Wintertime you may wish to go skating on the frozen lake. In the evening you will bathe in a private lakeside sauna and cool off in a lake.

#### Day 4: Optional trip to Ähtäri Zoo

After breakfast and checking out, you can visit Ähtäri Zoo (7 km from the farm). At Ähtäri Zoo you will not only meet Nordic animals in their natural settings but also the giant pandas in the Snowpanda House.



## COUNTRY HOLIDAY

**Season:** Year-round **Duration:** 3 nights

**Languages:** English **Participants:** 2 - 12 persons

**Services included:** Accommodation for three nights in apartments or cottage, daily breakfast, reindeer walk, private sauna, bicycle hire with local map, one entry to spa

**Optional services:** Bowling session, tickets for Ähtäri Zoo and the Snowpanda House



## RELAXATION

**Season:** Available year-round. **Duration:** 3 nights **Languages:** English **Participants:** 2 - 12 persons **Services included:** Accommodation for three nights in apartments or cottage, daily breakfast, reindeer feeding session, peat sauna and treatment in Sauna World Ähtäri, bicycle hire with local map, lakeside sauna evening in Valkeisen Loma Reindeer Farm. In winter reindeer sleigh ride (extra fee).

### Active family holiday on the reindeer farm 3 nights (2020-2021)

#### Day 1: Arrival at Valkeisen Loma Reindeer Farm

Check into either a comfortable family room or a farm cottage.

#### Day 2: Feed the reindeer and explore the woods

After a hearty breakfast, you will make yourselves acquainted with our reindeer which you'll feed with lichen during your visit. In the wintertime, you may be able to enjoy a sleigh ride for additional fee. During the afternoon, you take a self-guided trip to the local woods. In the summer you may go by bike or on foot, in the winter perhaps by skiing or by snowshoes. Depending on the season, you may be able to pick some berries or mushrooms, or just enjoy the beauty and peacefulness of the forest. Wintertime you may wish to go skating on the frozen lake. Later on, you will enjoy a private lakeside sauna bath with a cooling dip in the lake.

#### Day 3: Tree top trails, bowling and leisure spa

Time for an adventure! The ecological adventure park, Flowpark can test your courage as the adventure trails have been built high in living trees, without harm to them. In the afternoon, it's time for bowling at a nearby bowling alley. The perfect way to finish off the day is to visit the local leisure spa, where your family can swim, visit jacuzzis and family saunas.

#### Day 4: Optional trip to Ähtäri Zoo

After breakfast and checking out, you may wish to visit Ähtäri Zoo which is located only 7 km from the farm.



## FAMILY HOLIDAY

**Season:** Year-round **Duration:** 3 nights

**Languages:** English **Participants:** 2 - 12 persons

**Services included:** Accommodation for three nights in a family room or a farm cottage, reindeer feeding session, bicycle hire with local map, private lakeside sauna session, tickets to Flowpark activity park, bowling alley and leisure spa.

**Optional services:** In the wintertime, sleigh rides





# MULTI ACTIVITY HOLIDAY IN ÄHTÄRI

**The perfect place to relax in Ähtäri, Finland**  
**4 nights / 5 days (2020-2021)**  
Unspoilt nature and peaceful countryside with small and large lakes invite you for the trip of the lifetime. One guided programme daily as well as free time of our own. This holiday is perfect for families, individuals and couples.

**Day 1: Arrival at the accommodation**  
Accommodation of your choice at Valkeisen Loma Reindeer Farm, at Hyvölä Houses or at Naava Resort.

**Day 2: Walk with the reindeer**  
Today you will visit Reindeer Park at Valkeisen Loma Reindeer Farm, where you will get to know the reindeer by walking with them through the local woods. A small herd of reindeer (who all have their own names and characteristics!) will keep you company. After the walk, your host will tell you stories about reindeer farming while you enjoy



coffee or tea served with a pastry. You may also want to try your hand at some reindeer lasso throwing. In the wintertime, you may be able to enjoy a sleigh ride for additional fee. Duration of the programme approx 1½ hours.

**Leisure activities on your own:** hiking, biking or visit to Ähtäri Zoo  
Later on, you may wish to take a self-guided trip to the local woods by bike or on foot. Depending on the season, you may be able to pick some berries or mushrooms, or just enjoy the beauty and peacefulness of the forest. Alternatively, you may wish to visit Ähtäri Zoo and Snowpanda House, which are located near Valkeisen Loma Reindeer Farm. At Ähtäri Zoo you will not only meet Nordic animals in their natural settings but also the giant pandas in the Snowpanda House. (Note: for additional cost).

**Day 3: Wellness in the spa area of the new Saunarestaurant Kiulu**  
Today is all about pampering. You will bathe with purifying peat treat-



ment products and have relaxing massage (adults only). This 5,000 – 6,000-year-old peat has been extracted from local marshland and it is used in many ways in peat therapy treatments. It significantly increases your rate of metabolism, and the bioactive particles treat your skin. Peat treatment is a traditional Finnish form of treatment that relaxes and treats. Duration approx 1.5 -2 hours.

**Day 4: Fishing trip with a guide**  
Now is your chance to learn how to fish like a pro! You will meet your fishing guide at Hyvölä Houses and take a boat out at the lake for two hours. You are likely to catch perch, zander or pike by spinning, trolling or jigging. In the wintertime, you will take a walk on the ice and do some ice fishing. Duration approx 2.5-3 hours.

After the trip out on the lake, you may wish to wind down in the evening by bathing in a traditional Finnish smoke sauna (for additional cost).

**Day 5: Departure**  
Goodbye, time to leave home.

**Season:** All year round during years 2020-21, other times on request  
**Duration:** 4 nights, 5 days  
**Languages:** Programs mentioned are guided in English  
**Participants:** 2 - 12 people (min. of 2 full paying pax)  
**Services included:** 4 nights at the accommodation of your choice:  
• Valkeisen Loma Reindeer Farm (room or cottage, breakfast incl.)  
• Hyvölä Houses (cottage)  
• Naava Resort (villa)  
Equipment (fishing equipments, fishing licenses, rental towel for the sauna program on day 3)



Guided programs:  
• walk with the reindeer 1.5 h  
• wellness at sauna world (1.5 h)  
• fishing trip (3 h)  
• self-guided trip to the local woods (on foot or by bike)  
**Clients need to bring:** Weatherproof (winter/summer) outdoor clothing, swim suit  
**Additional information:** Day programs require a transfer from the accommodation to the program destination. Own means of transport (car, motorcycle, bicycle, etc.) required or local transfers at extra cost  
**Optional extras:** Tickets for Ähtäri Zoo and the SnowPanda House, reindeer sleigh ride, smoke sauna evening

## ACCOMMODATION OPTIONS

### Hyvölä Houses



### Naava Resort



### Valkeisen Loma Reindeer Farm



**CONTACT**  
Valkeisen Loma Reindeer Farm  
Auni or Altti Syrjänen,  
Valkeisentie 157, 63700 Ähtäri  
Tel. +358 50 5666 843/ Altti  
Tel. +358 50 5336 045/ Auni  
[valkeisenloma@valkeisenloma.com](mailto:valkeisenloma@valkeisenloma.com)  
[www.valkeisenloma.com](http://www.valkeisenloma.com)





**NORDIC  
MARKETING**



The European Agricultural Fund  
for Rural Development:  
Europe investing in rural areas

This manual was created by NordicMarketing for Hyvölä Houses, Naava Resort and Valkeisen Loma Reindeer Farm. Hyvölä Houses, Naava Resort, Valkeisen Loma Reindeer Farm and NordicMarketing are not responsible for any changes.