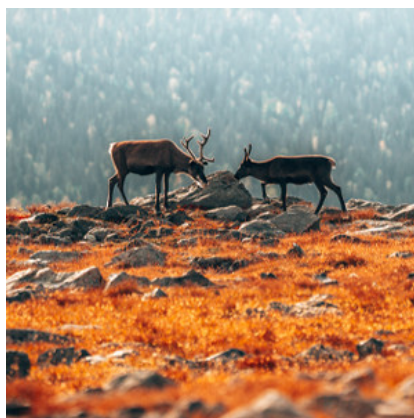
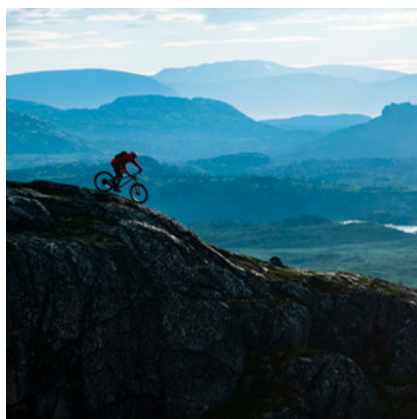


Your Arctic Destination | Swedish Lapland



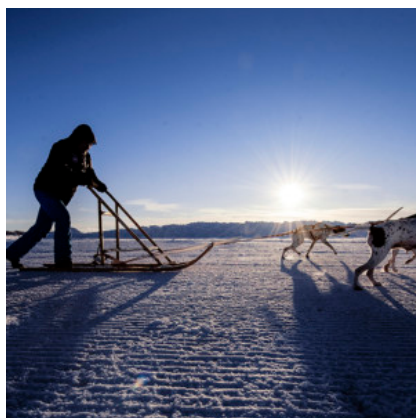
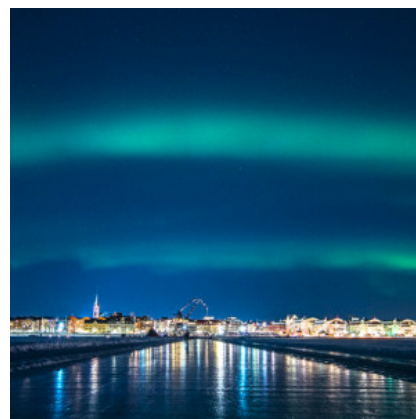
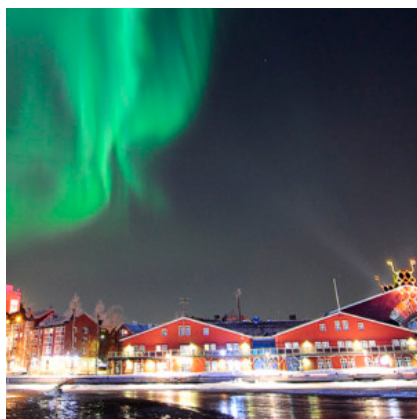
# Luleå





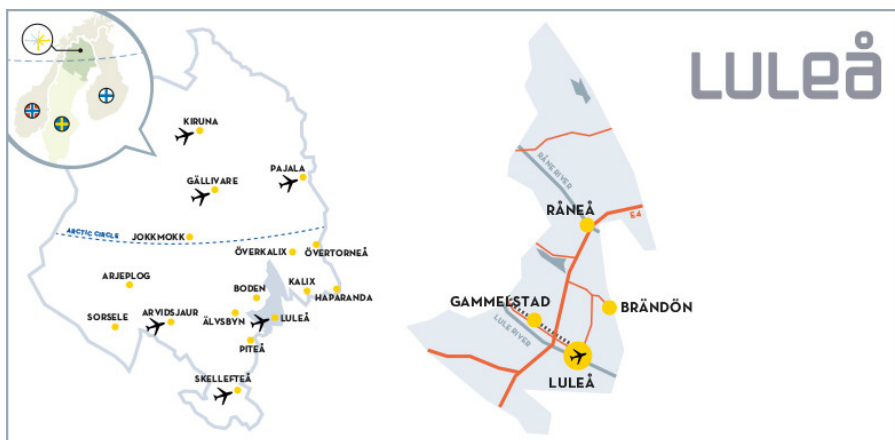
Destination

# Luleå



Destination

# Luleå



<http://www.visitlulea.se>

+46 (0)920-22 13 30

Storgatan 30 B

972 32 Luleå

[info@luleabusiness.se](mailto:info@luleabusiness.se)

Karin Åberg (Leisure)

[karin.berg@luleabusiness.se](mailto:karin.berg@luleabusiness.se)

+46 (0)70-288 26 90

Mattias Mannberg (MICE)

[mattias.mannberg@luleabusiness.se](mailto:mattias.mannberg@luleabusiness.se)

+46 (0)70-338 40 92

Where the Luleäriver meets the Bothnian sea you will find the city of Luleå with Gammelstad Churchtown Unesco site as it's old town and access to the archipelago just across the street from the hotels.

Luleå is the largest town or city in Swedish Lapland. Here you will find shopping, entertainment, nightlife and a wide array of White Guide listed restaurants, located close to the world's largest brackish water archipelago with 1,312 islands, rivers and vast forestland. Experience our seasonal contrasts – from snow, cold temperatures and a frozen sea in winter – to sunshine, warmth, beaches and midnight sunlight in summer. With Luleå's coastal location and usually clear skies you can, under the right conditions, spot northern lights, Aurora Borealis from September to March. In the city centre, Luleå has several high-class restaurants both with local produce as well as great cafés, international fusion kitchen and gourmet burgers. Near Luleå you will also find historical Gammelstad Churchtown Unesco sight. With only 10 min to the airport and a compact city centre all surrounded by water, everything is close in Luleå. High standard city hotels or cosy lodge accommodation with a nature location, Luleå has both. In winter the frozen sea around Luleå becomes a giant playground for all type of winter activities as ice skating, snowmobiling, dog sledding, tour skiing or even tours with hovercraft. In summer the river and sea give a fresh coastal breeze and many chances for water activities as boat tours, kayaking or canoeing or just hanging around on sandy beaches.

Destination

# Luleå





## Destination

# Luleå

## HOW TO GET HERE

### Aeroplane

Reach Luleå by flight via Stockholm Arlanda Airport (ARN) and further with a domestic flight to Luleå Airport (LLA) with either Norwegian ([www.norwegian.com](http://www.norwegian.com)) or SAS Airlines ([www.sas.se](http://www.sas.se)) several daily flights. Luleå Airport is only a 10 min drive or bus ride from the city centre. At the airport you will find several rental car companies and also taxi service. Scheduled bus transfer to city. New direct flights from Stuttgart and London Heathrow from winter season 2021.

### Train

Overnight trains from Stockholm with VY. First and second class carriages, couchettes and sleeping carriage facilities. Long distance trains generally have café or restaurant services on board. Train connection to Haparanda, Boden, Gällivare, Kiruna and Abisko. Train station is in walking distance from the city hotels. Booking site for tickets: <http://www.vy.se> or via VY train operator: [servicecenter@vy.se](mailto:servicecenter@vy.se), +46 771-444111 or [marie.torneus@vy.se](mailto:marie.torneus@vy.se) for contracting.

### Bus

Buses operate on a frequent basis as a link to smaller cities and villages in the Swedish Lapland region. These buses can also be booked in conjunction with your railway ticket. General information, timetables, prices etc. are easily available at Resplus [www.resplus.se](http://www.resplus.se) or Länstrafiken [www.ltnbd.se](http://www.ltnbd.se).

### Get around

Rental car companies operating from Luleå Airport: [www.swedavia.se/lulea/hyrbil](http://www.swedavia.se/lulea/hyrbil). Camper vans can be rented from [www.recamp.se](http://www.recamp.se). Local bus for getting around in central parts of Luleå and to and from the airport: [www.llt.lulea.se](http://www.llt.lulea.se)

---

## RESTAURANTS

### Restaurang CG

Specialised in grilled meat and local produces. Recommended in White Guide.

Storgatan 9  
Luleå  
+46 (0)920-20 07 00

### Hemmagastronomi

With own deli shop, sea front location in Luleå city. Recommended in White Guide.

N Strandgatan 1  
Luleå  
+46 (0)920-22 00 02

### Bistron

Bistro style with local produces, nice sea front location in Luleå city. Recommended in White Guide.

N Strandgatan 3-5  
Luleå  
+46 (0)920-52 31 00

### Nine

Located at the top floor at Clarion Sense hotel in Luleå city. Recommended in White Guide.

Skeppsbrogatan 34  
Luleå  
+46 (0)920-45 04 50

### Cooks krog

Located at ground floor at Quality hotel in Luleå city. Recommended in White Guide.

Storgatan 17  
Luleå  
+46 (0)920 - 20 10 00

### Hotell Savoy Restaurant

Typical Nordic ingredients with influences from the rest of the world. We are open 7 days a week.

Storgatan 59  
Luleå  
+46 (0)920 - 195 00

### Restaurang Arkipelag

Local and seasonal produces seafront location at the south sea side, Kuststad area.

Småbåtsgatan 8  
Luleå  
+46 (0)920 - 22 21 55

---

Company

# Amber Hotell



Welcome to a modern turn-of-the-century house in central Luleå with a very charming atmosphere and modern technology regarding wifi and TV. The hotel is a sister hotel to Naran Hotell in Luleå and both hotels are privately owned, without chain affiliation.

Our rooms are different in color, style, size and design. In the (half) basement, we have, completely newly built rooms with windows and furnishings adapted to the structure of the walls. Our older rooms have a charming style with different wallpapers for a varied experience. All rooms have new fresh bathrooms, TV with Chromecast and we offer fast and stable wifi throughout the hotel including all hotel rooms, breakfast room and lounge and of course also includes a fresh and good hotel breakfast.

With only minutes from the city center and bus and train communications, this is a perfect hotel for you who want to shop and eat well at the restaurants in Luleå city center or just want to stay overnight and then go on. Good for you who do business in Luleå and want to live centrally, close to communications and customers.

<https://www.amber-hotell.se>  
+46 (0)920 10200  
Stationsgatan 67, 972 34 Luleå  
[info@amber-hotell.se](mailto:info@amber-hotell.se)

Caroline Stålnacke  
Hotel Manager & Owner  
[info@amber-hotell.se](mailto:info@amber-hotell.se)  
+46 (0)920 10200



Company

# Bondgården Bälinge



Bondgården Bälinge is a living ecological farm located 15 min (14 km) from Luleå city. Meet the owners Thomas and Britta-Karin on their farm in a really genuine environment among the farm animals as cows, horses, piggs, goats and sheeps where you can enjoy your stay and interact with the animals and the daily life on the farm. Restaurant on site and 5 ensuite bedrooms with a fantastic uninterrupted view over the Luleriver. Open up for guest during autumn 2020. Information about accommodation products will soon be published.

<https://bondgardenbalinge.se/>

+46700174082

Sandnäsetvägen 117, 975 94 Luleå

[bondgarden.balinge@outlook.com](mailto:bondgarden.balinge@outlook.com)

Thomas Holmbom

Owners

[bondgarden.balinge@outlook.com](mailto:bondgarden.balinge@outlook.com)

+46700174082

Britta-Karin Staffansdotter

Owner

[bondgarden.balinge@outlook.com](mailto:bondgarden.balinge@outlook.com)

+46700174082

Company

# Brändön Lodge and Pine Bay Lodge



Brändön Lodge & Pine Bay Lodge are the names of our two hotels situated 30 minutes north of Luleå by the sea of Bothnian Bay on the coast of Swedish Lapland. We have been in the international tourism business for 19 years, focusing on individual travellers and small group leisure tourists beside our local market. We offer high-class activities, adventures, food and accommodation. Transfer solutions to combine our products are offered with other suppliers in the area. Accommodation in either in two-bedroom wooden hotel cabins or in traditional hotel rooms.

Pack ice adventures on the frozen sea of Swedish Lapland is one of our highlight activities. Reaching the seemingly endless pack ice fields and ice formations. Arctic-like, but still available during a 4-hour snowmobile excursion. Northern light snowshoe walks with outdoor meals offered as well as ice fishing. Close to nature husky driving, drive your own team or ride the musher's sled 1-4 hours. Snowmobile tours in the forestland 1-4 hours. Hovercraft adventures on the frozen sea a unique activity, only in Luleå! Aurora Hideaway Dinner and Dinner On Ice™ are unique dinner events on the frozen sea. Exclusive tours or private guides available. Jopikgården on the island of Hindersön is also one possibility for accommodation. An island with 30 inhabitants, reachable by boat in summer or by snowmobile or hovercraft in winter.

<https://www.brandonlodge.se>

+46 (0)920-741 00

Brändö Kvarnväg 133, 975 97 Luleå

[booking@brandonlodge.se](mailto:booking@brandonlodge.se)

Göran Widén

[goran.widen@brandokonferens.se](mailto:goran.widen@brandokonferens.se)

+46 (0)70-667 79 00



Company

# Clarion Hotel Sense



Clarion Hotel Sense is a modern 4-star hotel, located right in the heart of Luleå. With 9 floors and 228 quiet rooms, it offers a variety of living accommodation from generous to economy but all with a luxury feel.

The city centre with its great offers of culture, shopping and entertainment is right on the doorstep. The hotel itself offers a pleasant and relaxed atmosphere where Nordic standards meet sophistication and modernity. Here you can experience the four seasons in their most natural form. In the spa area, you can relax, take a foot bath, a classic sauna or a dip in the warm pool with panoramic views. The sauna area has a variety of saunas to choose from. You can book spa treatments or go to the fitness centre. On the 9th floor, you can enjoy delicious meals at Nine restaurant whilst you have a breath-taking view over the bay.

The hotel has been awarded “Clarion Hotel of the Year in Scandinavia 2015” by Nordic Choice Hotels and “Luxury Modern Hotel of the Year – Sweden 2015” by Luxury Travel Guide Award. Listed in White Guide Hotels+Bar 2019.

<http://www.clarionsense.se>  
+46 (0)920-450 450  
Skeppsbrogatan 34, 972 31 Luleå  
[cl.sense@choice.se](mailto:cl.sense@choice.se)

Emily Kivisalu  
[emily.kivisalu@choice.se](mailto:emily.kivisalu@choice.se)  
+46 (0)920-450 465

---

Company

# Comfort Hotel Arctic



Comfort Hotel Arctic is a family run and owned hotel located opposite the main train station of Luleå and in close proximity to the bus station. The hotel is located off the main street of Luleå and is easily accessed from the airport by either bus or taxi (approximately 10-15min by car). The hotel consist of 95 tastefully decorated rooms, all which are fully equipped with TV, desk, chairs and spacious beds.

A diverse breakfast buffet is served 7 days a week with inspiration from the local Lapland cuisine as well as international cuisine.

<https://www.arctichotel.se>  
+46980 109 80  
Sandviksgatan 82, 97234 Luleå  
[co.arctic@choice.se](mailto:co.arctic@choice.se)

Elin Hedman  
Hotel Manager  
[elin.hedman@choice.se](mailto:elin.hedman@choice.se)  
+46702574465



Company

# Elite Stadshotellet



Elite Stadshotellet Luleå is a modern hotel of a very high standard, where style and 100-year old craftsmanship have been tastefully combined with today's demands for comfort and service. The hotel has 158 tastefully decorated rooms. Style and size differ which makes every room unique. The hotel is located in central Luleå overlooking the city park and the north harbour. During the winter season, it's only two minutes walk to the world famous ice track.

The lobby welcomes with an open space and the atmosphere set by a beautiful chandelier. In close connection to the lobby, there is a nice and cosy lounge available to all our guests.

In our beautiful Festivity hall breakfast buffet is served seven days a week. Situated in the hotel is our restaurant Tallkotten and the gastropub The Bishop's Arms. Our intimate atmosphere, together with our service and comfort, will make your stay here an experience to remember.

Buses and trains stop within comfortable walking distance and the airport shuttle stops within 5 minutes walk.

<https://www.elite.se/>  
+46 (0)920-27 40 00  
Storgatan 15, 972 32 Luleå  
[info.lulea@elite.se](mailto:info.lulea@elite.se)

Annica Öhman  
[annica.ohman@elite.se](mailto:annica.ohman@elite.se)  
+46 (0)70-528 11 08

---

Company

# Explore Luleå



Explore Luleå is an adventure company offering different guided tours of outdoor activities. Our large playground is the ice of the frozen river, bays and sea or the snowy forests around Luleå city. In January to March, you could see the citizens of Luleå go out on skis, skates, bike or kicksled etc or on the ice track that encircles the Luleå city peninsula. We want to share that icy experience, our arctic lifestyle with our visitors. Our guide will pick you up from your Luleå city hotel. Equipment is included in all tours. Warm clothes could be hired if necessary.

The owner of the company, Pontus Frank has worked as outdoor activity guide since 2008 and he is a very experienced guide with the nature in his heart. He cooperates with accommodations and other activity companies to provide the best service as possible. He loves to meet new guests and guide them through our beautiful area in combination with our activities. Pontus is always developing new and interesting activities. High quality, good service and safety are the most important for us.

<https://www.explorelulea.com>  
+46 (0)73-767 90 45  
Sörsundet 64, 975 95 Luleå  
[info@explorelulea.com](mailto:info@explorelulea.com)

Pontus Frank  
[info@explorelulea.com](mailto:info@explorelulea.com)  
+46 (0)73-767 90 45

---



Company

# Farm House Lodge – Ralph Lundstengården



Welcome to Ralph Lundstengården and the old farm name "Hääshgården" dates as far back as the 1700s, once upon a time it was a large and renowned homestead, a so-called Norrbotten farm with a barnyard. The famous composer Ralph Lundsten grew up here and therefore the farm is called Ralph Lundstengården. You find us situated by the winding, old coastal road in the village of Ersnäs, in-between Luleå and Piteå. Calm, countryside environment close to both the sea and the forest.

Our restaurant is located in the Stone Barn, where we have created a unique environment. The atmosphere is virtually magic. Upstairs you find the Hayloft, with its lovely timber walls and fireplace. During the year we have many reoccurring traditions such as the archipelago buffet, the Christmas fair and the Christmas smorgasbord/buffet. The wedding receptions in the rural environment are much appreciated and it's just as beautiful in glistening winter shroud, as it is when the garden is in full bloom.

We put great emphasis on the genuine, rural and local, the village history and the farm's history, both regarding atmosphere and fresh ingredients. It is important for Kristina, who both owns and runs the restaurant, to maintain the history of the farm, and the restaurant has for many years been part of Sweden's leading restaurant guide The White Guide.

<https://www.ralph-lundstengarden.com/>  
+46 (0)70-393 25 53  
Ersnäsvägen 83, 975 92 Luleå  
[kristina@ralph-lundstengarden.com](mailto:kristina@ralph-lundstengarden.com)

Kristina Holmberg  
CEO  
[kristina@ralph-lundstengarden.com](mailto:kristina@ralph-lundstengarden.com)  
+46 (0)70-393 25 53

## MICE

Restaurant, Accommodation, Weddings,  
Café, Conference, Activities for groups.

Company

# First Camp Luleå



First Camp Karlsvik Luleå

FIRST CAMP is located about 10 km from the city center, next to the Luleå river with unparalleled nature. We offer cosy and modern self-catering cabins for a comfortable holiday, all beautifully located by the river in the village of Karlsvik.

You will find just about everything you could want at First Camp - beaches, restaurant, Kolarens café, a convenient store, play areas, a wide range of activities and great places to visit. In summertime you will find several lovely sandy beaches and heated pools with wave machine and water slide, besides an inspiring environment. All close to shopping and restaurants in Luleå city and Storheden.

At First Camp Luleå, we have a wide range of activities that everyone can enjoy. Naturally, there is a kids' club. The leaders arrange fun and exciting activities for your children. Our playground is located next to Blix playhouse, with giant bouncy pillows, a large sandpit, swings, a slide, boule court, badminton, football field, beach volleyball and outdoor gym. Most activities are available during spring and summer season.

<https://www.firstcamp.se/lulea>  
+46(0)920-603 00  
Arcusvägen 110, 97594 Luleå  
[lulea@firstcamp.se](mailto:lulea@firstcamp.se)

Malin Gotthold  
Site Manager  
[Servicechef.lulea@firstcamp.se](mailto:Servicechef.lulea@firstcamp.se)  
+46(0)70-199 16 77



# Gammelstad Visitor Center



Gammelstad Church Town, Susanne Lindholm.

## Gammelstad Church Town

Of Sweden's total of 71 church towns only 16 remain. Most of these are remnants of what they once were. Gammelstad has the country's largest and best preserved church town with 405 cottages. The church cottages in the Church Town was built by farmers that lived far away and needed somewhere to spend the night to be able to attend church. UNESCO added Gammelstad church town to the World Heritage list in 1996 - motivated by its outstanding universal value and its relevance to all mankind.

## Gammelstad Visitor Centre

At Visitor Centre there is a nice exhibition about Gammelstad's history, slideshows, a souvenir shop and information brochures to use when discovering the world heritage site. Visitor Centre is open year round. We arrange guided tours and other activities in the Church Town for booked groups and visitors on site. Our team consist of a knowledgeable group of guides. All the guides are authorized Gammelstad guides, which means they completed a course and are authorized to guide groups in Gammelstad Church Town. For larger groups we use an audio system called "Whispers". Every guest will be given a receiver with earphones and the guide will have a transmitter with a microphone. This means everyone will be able to hear the guide at all times.

<https://www.visitgammelstad.se>

+46 (0)920-45 70 10

Kyrktorget 1, 954 33 Gammelstad  
[gammelstad@lulea.se](mailto:gammelstad@lulea.se)

Matilda Lång

[matilda.lang@lulea.se](mailto:matilda.lang@lulea.se)

+46 (0)920-45 52 83

Jennifer Wikström

[jennifer.wikstrom@lulea.se](mailto:jennifer.wikstrom@lulea.se)

+46(0)920-45 52 86

Company

# Hemmagastronomi



Hemmagastronomi and Simon Laiti, chef and owner welcomes you to experience his restaurant, deli, bakery and food studio all-in-one establishment. Located in the center of Luleå with a seafront location. Local seasonal ingredients are the obvious and natural choice for Simon.

<https://www.hemmagastronomi.se>  
+46 920- 22 00 02  
Norra Strandgatan 1, 972 39 Luleå  
[info@hemmagastronomi.se](mailto:info@hemmagastronomi.se)

Simon Laiti  
Chef/Owner  
[simon@hemmagastronomi.se](mailto:simon@hemmagastronomi.se)  
+46703245756



Company

# Hotell Savoy



Welcome to Hotel Savoy in Luleå, located in the city centre just minutes away from shopping, entertainment and dining.

Hotel Savoy offer 76 carefully decorated and unique rooms, including 20 large suites. Our guests are welcome to relax in our SPA, enjoy a memorable meal in our restaurant or sip on a carefully handcrafted cocktail in our restaurant. As a guest at our hotel you enjoy free access to our relaxing spa featuring two jacuzzies, two saunas, relaxing music, and comfortable seating. The spa offers treatments upon reservation.

Our friendly staff is always looking for ways to help our guests enjoy their stay and will be happy to recommend things to see and do in our wonderful city.

<http://www.hotellsavoy.se>  
+46 (0)920-195 00  
Storgatan 59, 972 31 Luleå  
[info@hotellsavoy.se](mailto:info@hotellsavoy.se)

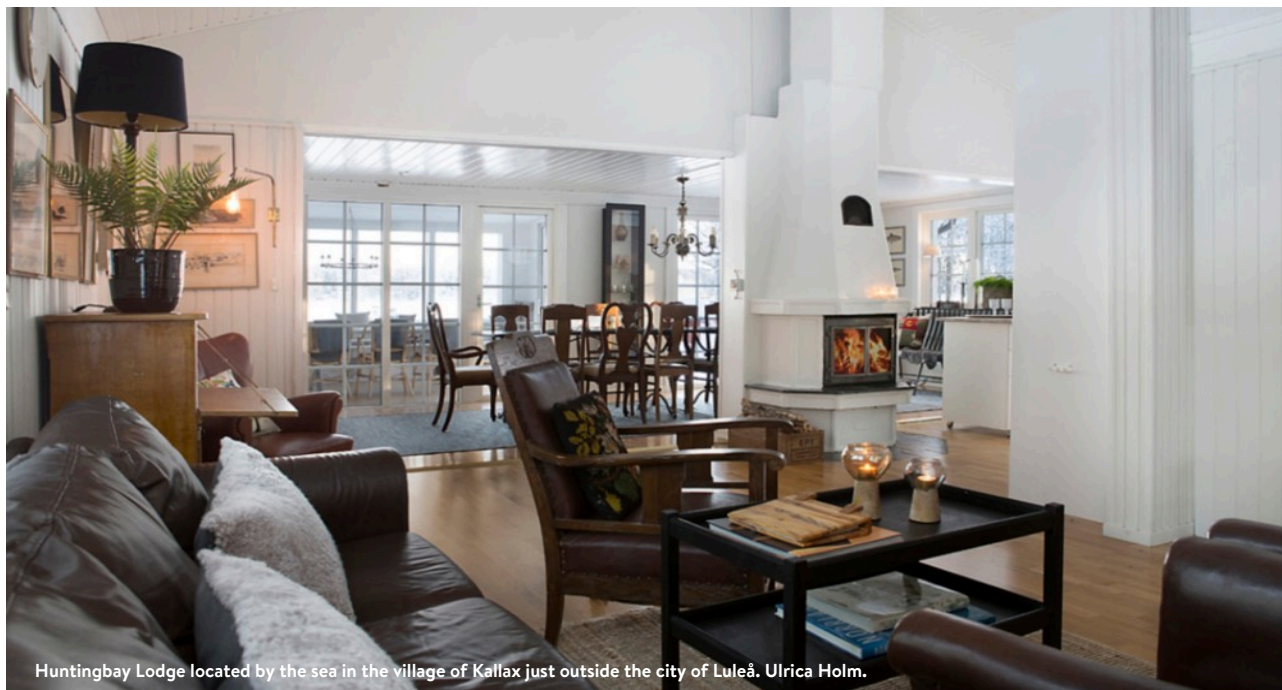
**JP Pozzi**  
Hotel Manager  
[jp@hotellsavoy.se](mailto:jp@hotellsavoy.se)  
+46 (0)70-291 47 90

## MICE

Hotell Savoy have meeting facilities, contact us for more information.

Company

# Huntingbay Lodge and Kallaxgårdshotell apartment



Huntingbay Lodge located by the sea in the village of Kallax just outside the city of Luleå. Ulrica Holm.

We are a small family-owned company, located by the sea in the village of Kallax only 15 min from Luleå city and Luleå Airport. We run two accommodations; Huntingbay lodge and Kallaxgårdshotell/apartment. Stay for a while by the Gulf of Bothnia, with wildlife and nature on your doorstep, close to the archipelago and the sea, yet also near the city, adventure and entertainment. 'It feels like coming home' as a guest described Hunting Bay Lodge. Interiors are carefully designed by the Wikströms siblings, with elements both vintage and contemporary. The atmosphere is modern, original and spacious, yet cosy.

Huntingbay Lodge is the small villa with seafront location, offers so much more than accommodation is perfect for those who want the best of both worlds, the comfort of a home combined with the pleasure of a getaway. Couples, families, friends, there is something to suit all tastes.

Kallax Gårdshotell Apartment is the cosy private apartment, either you are two, three or four people, one family, one or two couples.

<https://www.huntingbaylodge.se/en/>  
+46 (0)70-247 02 04  
Kallaxvägen 441, 975 95 Luleå  
[info@huntingbaylodge.se](mailto:info@huntingbaylodge.se)

Kristina Wikström  
[info@huntingbaylodge.se](mailto:info@huntingbaylodge.se)  
+46 (0)70-384 41 80

Company

# Kroppsbalans wellness center



Kroppsbalans is a massage and wellness center in the city of Luleå within walking distance from all the city hotels. We provide treatments with high professional skills and extra care to increase your health and well-being. Our treatments contribute to increased well-being, faster recovery, life balance and new energy. The treatment rooms are inspired from our Arctic nature and change of seasons.

Our exclusive signature treatments 'The Power of Swedish Lapland – massage treatments' offer you an unforgettable experience. These sublime massage treatments are inspired by seven different power places in Swedish Lapland and we use herbs and medicinal plants from our Arctic nature to include also the tasting sences. Each treatment has a unique effect to help you relax, recover and give you renewed energy.

<https://www.kroppsbalans.com>  
+46 (0)70-945 80 88  
Stationsgatan 46, 972 33 Luleå  
[anneli@kroppsbalans.com](mailto:anneli@kroppsbalans.com)

Anneli Selberg  
[anneli@kroppsbalans.com](mailto:anneli@kroppsbalans.com)  
+46 (0)70-945 80 88



Company

# Laponia Rederi



Laponia Rederi is a cruise operator since 1991. We can assist you with everything from the choice of vessel, menu and beverages to entertainment and decoration. Our ships are perfect for everything from a private dinner party, mingles and weddings to conferences and event venues. We have three own vessels M/S Laponia, M/S Symfoni and S/B Wiggen, all passenger vessels that are used in the summer. Let us take you out in the beautiful archipelago of Swedish Lapland the only brackish water archipelago in the world. See scheduled tours on our website.

In the winter we arrange icebreaker tours with an ice-breaking towboat T/B Viscaria. You can take a walk on the ice, skating or go by car or snowmobile. You can also take a trip with an ice-breaking towboat and have an ice bath in a survival suite.

<https://www.laponia.se>  
+46 (0)920-120 84  
Storgatan 9, 972 38 Luleå  
[info@laponia.se](mailto:info@laponia.se)

Ulrika Kommes  
[ulrika@laponia.se](mailto:ulrika@laponia.se)  
+46 (0)70-307 21 85

---

Company

# Luleå Adventure



Luleå Adventure. Graeme Richardson.

We are a family owned company who offer various activities with huskies. Come and meet our over 20 happy Siberian Husky dogs. Luleå Adventure is located in Ale, a small village 40 minutes from Luleå City. We offer dogsledding tours in a snow covered winter wonderland or husky hikes in nature reserve in summer/autumn. Take the chance and leave your every-day life for a moment. Challenge your self in the nature of Swedish Lapland and drive your own team of huskies or just relax on the sled and enjoy the ride. Welcome!

<https://www.luleaadventure.com>  
+46 (0)70-205 74 62 / +46 (0)70-396  
43 61  
Ale Byaväg 546, 975 91 Luleå  
[info@luleaadventure.com](mailto:info@luleaadventure.com)

Mauro Marchesoni  
[info@luleaadventure.com](mailto:info@luleaadventure.com)  
+46 (0)70-205 74 62 / +46 (0)70-396  
43 61

---

Company

# Luleå Archipelago Adventure



Luleå Archipelago Adventures is a small customer focused tourism company that specializes in small group experiences and boutique farmstead accommodation Jopikgården Lodge at Hindersön island in the Luleå Archipelago year-round.

Our passion is primarily human-powered activities such as fat biking, sea kayaking, stand up paddleboarding, hiking, snowshoeing, and yoga, but also dogsledding with our Huskies. Traditional Swedish meals and fika prepared fireside by our guides highlights the experience on the ice or by the water.

<https://www.luleaarchipelago.com>  
+46 (0)70-525 26 53  
Jopikholmen 29, 974 99 Hindersön  
[info@luleaarchipelago.com](mailto:info@luleaarchipelago.com)

Susanne Törnlin  
Owner  
[info@luleaarchipelago.com](mailto:info@luleaarchipelago.com)  
+46 (0)70-525 26 53





Company

# Luleå Travel



Luleå Travel is an inbound tour operator, all season activity provider and destination management company (DMC) to Swedish Lapland-Arctic Sweden. We offer all season activities and holidays in the most Northern part of Sweden. From short trips near the city of Luleå to multiple day holidays; Self Drive holidays, City Breaks, unique activities and tailor made holidays. Our insider's knowledge, flexibility and key contacts in each destination allow us to create unique programs for private travellers and cooperate events. Luleå Travel offers unique adventures. We create memories for life!

Do you want to know more about Swedish Lapland as a travel destination? We are looking forward to get in contact with you!

<https://luleatravel.com/>

+46706666805

Kaserngatan 1, 97442 Luleå

[info@luleatravel.com](mailto:info@luleatravel.com)

Dirk Koolwijk

[info@luleatravel.com](mailto:info@luleatravel.com)

+46 (0)70-666 68 05

## MICE

Luleå Travel is happy to assist you in tailoring group tours. Whether you are travelling with friends, family or work, we can put together a great program with both accommodation activities and dining. All depending on your needs and wishes. Our strength is flexibility and expertise. Besides we know what it takes to optimise your visit to Swedish Lapland!

Company

# Melderstein Manor



Melderstein. Thomas Åberg.

Melderstein Manor is in a scenic location close to Råneå River. The old works environment surrounding Melderstein Manor has a special harmony and atmosphere. We offer modern rooms, a fully-licensed restaurant for pre-ordered meals, a sauna section, yoga studio and a chapel. Our rooms are in two buildings: the Manor house itself and the courtyard annex. All the rooms are renovated in keeping with the buildings in which they are situated.

Melderstein Works Manor dates back to 1741 and was built to handle the iron ore mined in Malmberget. The founders of the works were Jonas Meldercreutz, Abraham Steinholtz and Carl–Johan Thingwall. The name Melderstein was formed from the names of the two main owners: Melder(creutz) and Stein(holtz). The works era lasted until 1892. Since 1995, Melderstein Manor is owned by the Thingvall family, who carried out extensive renovation and refurbishment of the old Manor building. In the lovely surroundings there are walking trails along which you can see historical reminders of the Melderstein works era.

Melderstein Manor is situated 12 km from Råneå and the road E 4. Luleå Airport, Boden and Kalix are only 45 min away. We can offer packages in co-operation with activity companies nearby.

<https://www.melderstein.se>  
+46 (0)924-510 37  
Melderstein 127, 95591 Råneå  
[info@melderstein.se](mailto:info@melderstein.se)

Katarina Thingvall  
owner  
[info@melderstein.se](mailto:info@melderstein.se)  
+46 (0)924-510 37

## MICE

A CONFERENCE AT YOUR OWN MANOR Since we only receive one group at the time, the entire area may be used to fit any requirements. "One group at the time" ensures good working conditions, good group feeling, no disruptions and good opportunities for team building. Our two conference rooms provide projectors, flipchart blocks and other normal conference equipment. There is Wi-Fi throughout the manor.

Company

# Northern Soul Journeys



Northern Soul Journeys. Emma Mattsson .

Just 50 minutes outside the city of Luleå lies the homestead of Northern Soul Journeys. There, Hannah and Jeremias live with their pack of Alaskan Huskies. They live a life that is connected to nature and to the seasons. During the winter months, guests can enjoy private dog sledding tours through the Boreal forest. Their tours are as short as one hour and as long as 5 hours. With the option to sit as a passenger or to drive your own sled, there are options for guests of all ages and abilities.

Upon arrival at their homestead, guests are provided with suitable Arctic clothing. As experienced guides and teachers, Hannah and Jeremias instruct the guests on how to drive a dog sled, ensuring safety and comfort. On tours with included fika (small snack) or lunch, guests will have a taste of the homestead, warm juice made from berries picked from the land is served with a homemade fika or lunch. Guests are invited to get up close and personal with the four-legged co-workers, the dogs certainly love it.

Hannah and Jeremias also provide private snowshoe tours. They teach their guests about the different trees, and animals found in the forest, and offer some warm homemade juice and fika.

Northern Soul Journeys works closely with local lodges; Aurora Safari Camp, Melderstein, Arctic Retreat, The Outpost, and Sörbyn to name a few. Transfers can be provided to and from the local lodges providing an extended experience.

<https://www.northernsouljourneys.com/>  
+46(0)768470823

Ängesträsk 308, 95595 Niemisel  
[northernsouljourneys@gmail.com](mailto:northernsouljourneys@gmail.com)

Jeremias Kinnunen-Levy  
Owner/Guide  
[northernsouljourneys@gmail.com](mailto:northernsouljourneys@gmail.com)  
+46(0)768470823

Hannah Kinnunen-Levy  
Owner/Guide  
[northernsouljourneys@gmail.com](mailto:northernsouljourneys@gmail.com)  
702424859



Company

# Quality Hotel Luleå



Quality Hotel Luleå is beautifully situated in the centre of Luleå, in the heart of the shopping and restaurant district of the city. The hotel has a famous restaurant, a peaceful bar, a modern conference centre and a wellness centre. At Quality Hotel Luleå you are always welcome and will certainly have an eventful stay. The popular restaurant of the hotel, Restaurang Q, has recently been refurbished. This is where the breakfast, our After-Work buffet and group and conference dinners are served. The well-known à la carte restaurant Cook's Krog serves tasty specialities from Lapland. Meals can be started or ended in our cosy lounge bar, Invit, where both hotel guests and locals enjoy alike. We have a relaxation area with sauna and exercise room where you can relax after a long day, a perfect place to renew energy.

[www.nordicchoicehotels.se/](http://www.nordicchoicehotels.se/)  
+46 (0)920-20 10 00  
Storgatan 17, 972 31 Luleå  
[q.lulea@choice.se](mailto:q.lulea@choice.se)

Eive Stenvall  
Hotel manager  
[eive.stenvall@choice.se](mailto:eive.stenvall@choice.se)  
+46 (0)920-20 10 00

Nathalie Chatzidimitriou  
Sales  
[nathalie.chatzidimitriou@choice.se](mailto:nathalie.chatzidimitriou@choice.se)

---

Company

# Ranch 465



Get a unique experience of the forests and the surroundings of Råneå river valley from a horseback. With inspiration from the American cowboy culture, we combine western riding with northern Swedish forests, the midnight sun and northern lights. We are located only 45 minutes from Luleå airport and Luleå city centre. Exclusive with only small group, max 4 persons. We cooperate with nearby lodges as Sörbyn lodge and Melderstein Manor.

<https://www.ranch465.com>

+46(0)70-5426451

Tiljemyrvägen 131, 95595 Niemisel

[ranch465@gmail.com](mailto:ranch465@gmail.com)

Lars Berg

Founder, Guide

[ranch465@gmail.com](mailto:ranch465@gmail.com)

+46(0)70-5426451

---



Company

# Recamp



Welcome to Recamp. My name is Johan and I am the founder of this company. I am a third-generation car renter but after 20 years of renting out cars to customers from around the world I decided to change direction to campers instead. So, in 2021 I followed my dream and started Recamp with my wife.

We are situated at Lulea Airport where we also own the gas station and carwash. Our location makes it possible for your clients to start their adventure as soon as they leave the airport terminal.

We are a family run company and to us, it is important that our customers feel secure and welcome. We always try to be flexible and cater to your clients' specific needs. We only rent out quality campers from Volkswagen and have a range of models to suit each client. Maybe you heard about California Ocean or Grand California, campers that suit everyone from the couple, the family to a group of friends.

Our campers offer your clients the freedom to choose where they want to go, where they want to stay and most of all what they want to do. Maybe they want to stay off-grid, at a lake and do some fishing. Maybe they want to go to a campsite and experience the pulse, restaurants, and shopping in the city. Maybe they want to go on a road trip and follow the river from the mountain back to the sea. The best thing with Recamp and our campers is that there are no obligations the choice is all up to them, and there are no limits.

<https://www.recamp.se>  
+46920222023  
Luftfartsvägen 6, 97254 Luleå  
[info@recamp.se](mailto:info@recamp.se)

Johan Rönnbäck  
Owner  
[info@recamp.se](mailto:info@recamp.se)  
+46(0)920222023

Linda Rönnbäck  
Marketing and press  
[info@recamp.se](mailto:info@recamp.se)  
+46706730424



Company

# Restaurang CG



Restaurang CG. Restaurang CG.

CG stands for “carnivore grill” so at Restaurang CGs quality meat have always been the leading star. Here they stay to simple traditions as baking with sourdough, dry, marinade, smoke and long-cook. Always choosing seasonal produce and all of their meat is cooked on their charcoal grill, the heart of the kitchen. All of the meats are chosen with great care from quality producers.

<http://restaurangcg.se/>  
+46 920-20 07 00  
Storgatan 9, 972 38 Luleå  
[info@restaurangcg.se](mailto:info@restaurangcg.se)

Petter Nyberg  
Sommelier and co-owner  
[petter.nyberg@restaurangcg.se](mailto:petter.nyberg@restaurangcg.se)  
+46735013741

Company

# Scandic Luleå



A new and welcoming hotel, located just a short drive to the city centre, surrounded by beautiful areas for country walks, and only 100 km to the Arctic Circle. Lace up your skates and head out onto the prepared ice. Enjoy Norrbotten delicacies in our restaurant, and watch the Northern Lights as they dance across the sky.

Visit our relaxation suite at Scandic Luleå and take a dip in our indoor pool or relax in our sauna. We have bicycles you can borrow if you wish to explore Luleå yourself. Enjoy Swedish dishes and specialities from the Norrbotten region, such as reindeer and elk, in our hotel restaurant. Our hotel has conference rooms for up to 100 people and we offer free WiFi to all our guests.

Scandic Luleå is located in the northern part of Luleå, just a few minutes by car from Luleå city centre. Explore Luleå's attractions such as Teknikens Hus science centre and planetarium, or do some downhill skiing at Mattsund. Tee off at Luleå golf club, Sweden's northernmost golf course. You are also close to Luleå Hockey's home arena, the Coop Arena.

<https://www.scandichotels.com/>  
+46920276400

Banvägen 3, 97444 Luleå  
[lulea@scandichotels.com](mailto:lulea@scandichotels.com)

Jenny Erikson  
General Manager  
[jenny.erikson@scandichotels.com](mailto:jenny.erikson@scandichotels.com)  
+46709735798

Linda Andersson  
Service team Manager  
[Linda.andersson3@scandichotels.com](mailto:Linda.andersson3@scandichotels.com)  
+46705144080

## MICE

We offer 6 flexible meeting facilities for up to 170 people, 2 smaller meeting rooms and a Business Centre. All meeting rooms have natural daylight except our two small meeting rooms and are fully equipped with LCD projectors or big screens 75-85". Scandic Luleå is situated on the northern approach to Luleå, close to the town's major commercial areas. The hotel is within walking distance of the Coop Arena and Luleå University of Technology.

Company

# Sverigetaxi Luleå



Sverige Taxi Luleå i is Lulea's leading and largest taxi company. The company was founded as early as 1917, under the name Lulea Droskagarförening.

We operate Lulea's street 24 hours a day with 70 cars

Luleå Taxi is part of Sverigetaxi, which consists of stable and safe taxi companies all over the country that have merged into a joint company to offer you as a customer that little extra. Sverigetaxi is available from Kiruna in the north to Ystad in the south.

We have well-trained drivers, safe cars and an order center that is open 24 hours a day.

<https://www.luleataxi.se>

+4692010000

Nordkaottvägen 4B, 97254 Luleå

[info@luleataxi.se](mailto:info@luleataxi.se)

Sverigetaxi Luleå

Sales manager

[info@luleataxi.se](mailto:info@luleataxi.se)

+46920-10000



Company

# Wälimaas Buss – Arctic Connection



Wälimaas Buss is a third generation family business – a buss company that started in the 70's and is specialised in travel production and ordered traffic. Which means that it's run by people who live for the visions and to engage them through out the whole group. The knowledge and the experiences of 50 years in the travel production business lives on. Company also owner of Arctic Connection Travel Group that service as a local incoming and DMC.

Our driver have high service skills and have good knowledge about the local region Swedish Lapland, Northern Norway and Finnish Lapland. English and Swedish speaking drivers. We can also provide tour and city guides.

Our fleet contains:

- Six fully high quality coaches, 47-57 seaters equipped with Wifi, Toilet, Aircon, Seatbelts, Min 2 TV screens, 220V/USB charge units, Kitchenette for long range services, Microphone/speakers for guide.
- 2 small coaches, 19 seaters equipped with Wifi, Aircon, 220V/USB charge units, Microphone/speakers for guide.

More information also on <http://www.reser.nu>

<http://www.arcticconnection.se>

+46(0)-313 06 00

Nordkalottvägen 20, 97254 Luleå

[info@arcticconnection.se](mailto:info@arcticconnection.se)

Tomas Wälimaa

[info@arcticconnection.se](mailto:info@arcticconnection.se)

+46(0)-313 06 00

Company

# Yellow Snow Husky Tours



Yellow Snow Husky Tours is a small dogsledding company, owned and managed by us, Erik (1985) and Sanne (1989). We are very passionate about dog sledding and nature and love to share this passion with guests from all over the world. Our motto: Adventurous tours with a personal touch!

We offer all kinds of tours, but our focus is towards the longer husky adventures. To be out with the dogs for a full day is truly a great experience! Travel through a white wonderland, witness the strength and the joy of the huskies and learn everything about them. We also organise multi-day dogsledding trips where we sleep in basic but comfortable wilderness cabins.

Guests can enjoy being totally away from everyday life and experience the very basics: being active in nature, teamspirit with their dogteam, a crackling fire, quality time with friends/family and good food together with us and our friendly huskies. All our tours are suitable for everyone, young and old, experienced and inexperienced. Because we only take private bookings we are very flexible to adjust the tour to our guests wishes and abilities. We accept direct bookings, but we also work closely with lodges in the area: Sörbyn Lodge, Brändön Lodge and Arctic Retreat. We are located 1 hour north of Luleå where we can enjoy the combination of great accessibility and 'in-the-middle-of-nowhere' adventures. We also offer very fun summer activities (see website)! Welcome!

<http://www.yellowsnowhuskytours.com>  
+46 (0)76-8067975 / +46  
(0)72-7319542  
Krokträsk 64, 955 95 Niemisel, Luleå  
[info@yellowsnowhuskytours.com](mailto:info@yellowsnowhuskytours.com)

Erik Hordijk & Sanne Kouwenhoven  
[info@yellowsnowhuskytours.com](mailto:info@yellowsnowhuskytours.com)  
+46 (0)76-8067975 / +46  
(0)72-7319542



Company

# AK Personlig tränare



Cross country skiing has a special place in Sweden's culture and history. Over the years, skiing has moved from being a way of transportation, to pure, social fun. It is a clean, easy and wonderful way to travel through the Arctic outdoors. The basics are easy to learn. However, the learning curve will be much steeper with good instructions rather than struggling on your own. This course is accessible for all ages and levels of experience.

The focus is on the basic skills and techniques of classic or skate skiing.

The classes takes places at the Ormberget Outdoor Centre close to the centre of the city. The view from the Ormberget Centre is fantastic, you can see the whole of the city of Luleå before you. The centre has cross-country skiing tracks, restaurant, service-cabin, fireplaces and more. On request a different location can be chosen for the cross country skiing classes.

The owners and instructors of the company are both well experienced within Cross Country skiing, having expertise knowledge within physical activities / training and academic pedagogic skills. Both instructors has been compeeting within the Swedish National teams, either in Cross Country skiing or Sleddog Nordic style.

<https://www.akpt.se>  
+46 (0)70-687 29 93  
Kärvägen 9, 976 31 Luleå  
[karin@akpt.se](mailto:karin@akpt.se)

Karin Johansson Edman  
[karin@akpt.se](mailto:karin@akpt.se)  
+46 (0)70-687 29 93



# About Swedish Lapland



Swedish Lapland is Sweden's Arctic destination, a location trademark for Sweden's northernmost municipalities and a destination that borders both Finland and Norway.

A Sub-Arctic and Arctic climate has, of course, affected area and nature. But also people's way of life. Midnight sun in summer, northern lights in winter. It's got everything: from high mountains to the Bay of Bothnia, the mystery of the woodland and large bodies of water, including the four national rivers.

Internationally Lapland is used as a term for all of Northern Scandinavia, an old name for Sápmi – the traditional area of the Sámi indigenous people – divided between Finland, Norway, Sweden and Russia. The Sámi have lived here for thousands of years, long before current national borders. This is still Sápmi to them, and within Swedish Lapland, we offer experiences that give a greater understanding of Sámi culture. Swedish Lapland also contains world sensations and unique experiences. Both ICEHOTEL and Treehotel are iconic accommodation options. Midnight light in summer allows for a visit to the green, fishing, swimming, biking or walking in the middle of the night. In winter, Abisko is considered one of the best places in the world to see the northern lights.

So: even if Swedish Lapland is a location trademark and even if some parts of Swedish Lapland are outside the geographical province Lapland, you're always welcome to share our Arctic everyday life.

Cecilia Petzáll  
Travel Trade Manager  
cecilia.petzall@swedishlapland.com  
+46 (0)70-383 30 30

Johanna Ögren  
Marketing Strategist  
johanna.ogren@swedishlapland.com  
+46 (0)70-373 18 89



# Getting here



Fly to Swedish Lapland within a couple of hours or take the overnight train from Stockholm.

## By aeroplane

The main airports in Swedish Lapland are Luleå and Kiruna Airport, both [SAS](#) and [Norwegian](#) fly there with great connections to international flights. From Stockholm, you can catch a flight to [Arvidsjaur](#), [Gällivare](#), [Kiruna](#), [Luleå](#) or [Skellefteå](#). There are also smaller airports that connect destinations with each other. We also have a number of [direct flights](#) from various airports in Europe. Airports in northern Finland are also just a bus ride from Torne River valley in Swedish Lapland, as well as from Norway.

For information about buses within Swedish Lapland, visit [ltnbd.se](#) and [tabussen.nu](#).

## By train

In Swedish Lapland, nature is always the focal point, and it's no secret that the train is a nature-friendly way to travel. The night train departs southern Sweden twice a day, for timetable and booking, visit [vy.se](#). The Inlandsbanan train operates during summer, for timetable and booking, visit [inlandsbanan.se](#).

Cecilia Petzäll  
Travel Trade Manager  
[cecilia.petzall@swedishlapland.com](mailto:cecilia.petzall@swedishlapland.com)  
+46 (0)70-383 30 30

Johanna Ögren  
Marketing Strategist  
[johanna.ogren@swedishlapland.com](mailto:johanna.ogren@swedishlapland.com)  
+46 (0)70-373 18 89

